



PETT FLOWER SHOW & FAYRE

PETT VILLAGE HALL

Saturday 29th July 2023

King & Country

The show will be open at **2.00 pm**

Gill Adamson and Richard Darnell

have kindly consented to distribute the
Trophies and Prizes from 4.00 pm

*Staging of all exhibits must be completed
Between 8.30 am and 10.15 am*

SHOW RULES

1. All entry forms and fees must be sent to one of the undermentioned before 8.00pm on the WEDNESDAY preceding the Show. **Late entries will not be accepted.**

Mrs R H Patten, 5 Old Coastguard Cottages, Pett Level
Mrs P Barker, 1 Rectory Park, Pett Road, Pett
Mr R Barden, Nedrabs, Pett Road, Pett

2. Entry fees will be 30p for each exhibit.
3. All staging **MUST** be completed between 8.30am and 10.15am on the day of the Show. Competitors are asked to leave the hall as soon as staging is completed, after which time only Judges and necessary officials will be allowed in the hall until the Show is opened. No exhibitor shall move or interfere with any exhibit already staged without the consent of a Steward. **No exhibit may be removed before 5.00pm, but must be removed by 5.30 pm.**
4. No-one except the Judges and stewards shall be allowed to handle any exhibit during the time of the exhibition.
5. The decision of the Judges shall be final. The Judges may withhold awards where in their opinion there is not enough competition or the exhibits are of insufficient merit.
6. All fruit, flowers or vegetables exhibited (except those used for Classes 54 to 58 and 83) must have been grown by the exhibitor on land in his or her occupation or which has been in his or her possession for two months prior to the Show. All exhibits in the Home Produce classes must have been made or produced by the exhibitor.
7. No exhibitor shall stage more than one entry in any class and no exhibit shall be entered in more than one class.
8. Two or more persons, or groups of persons, shall not exhibit separately in any class, produce from the same garden, plot or planthouse except in the classes for Floral Arrangements.
9. Jams, etc. are to be labelled and will be judged accordingly.
10. **PRIZES.** No cash prizes will be awarded except as follows:
Classes 76 – 84 and class 88. 1st – £3, 2nd – £2, 3rd – £1. Classes 94 and 96. £20 to the winner of each class. Class 85 cash prize to be decided.
11. **CHALLENGE TROPHIES.** Particulars are given in the classes in which they are awarded. Points will be as follows: 1st place – 5; 2nd place – 3; 3rd place – 2. In the event of a tie, the exhibitor with the most 'first places' wins the Trophy or at the Judges' discretion.
YOUNG PEOPLE'S CLASSES. In the event of a tie the highest scorer in the growing class shall be deemed to be the winner or at the Judges' discretion.
12. Any exhibitor who wins the same Trophy three years' running shall be given a miniature trophy.
13. Any protest or objection must be in writing and handed to the Secretary before 4.00pm on the day of the Show together with a deposit of £1.00 for each objection, which deposit will be refunded only if the objection is upheld.
14. Definition of an Amateur: 'One who cultivates any study, art or sport for the love of it and not for money: one who is less skilled than a professional'. Therefore, the Floral Decoration classes in Pett & District Horticultural Society's Flower Show are open to Amateurs who do not in any way take part in Professional Flower arranging of any kind.
15. The trophies and cups will be the responsibility of the prize-winners for that particular year.
16. The Flower Show is self funding. **Local organisations are welcome to have a stall to promote their activities at a nominal rate. Application forms can be obtained from the Secretary (see back page of the schedule).**

PARTICULARS OF CLASSES AND AWARDS

VEGETABLES

The *Golding Challenge Cup* will be awarded for the most points in these classes

The *Golding Challenge Tankard* will be awarded for second highest number of points

The *Gertrude Coleman Trophy* will be awarded to the best exhibit in the vegetable classes

The *Tom and Kath Wells Trophy* will be awarded for the best exhibit in Class 23

1. Collection of any 6 vegetables as listed; exhibitor's choice but number of each vegetable as listed below; size of container to be approx 30" square to include list.
Please note that in the judging of this class, points will be allocated for the type of vegetables included, as specified by the RHS rules.
2. Lettuce or any other salad crop 2
3. Potatoes – any variety 5
4. Onions, sown this year (tops left on) not sets 4
5. Onions, autumn sown or sets (tops off) 4
6. Shallots, any variety 6
7. Carrots 4
8. Courgettes, any variety 4
9. Beet – any variety 4
10. Peas (not Mange Tout) 6 pods
11. Broad Beans 4 pods
12. Runner Beans 6 pods
13. Dwarf or French Beans 6 pods
14. Tomatoes any variety (not cherry) 4
15. Cherry tomatoes 4
16. Cucumbers any variety 2
17. Garlic 3
18. Longest Runner Bean
19. Largest Onion
20. 3 salad items on a dinner plate – attach list
21. Odd shaped vegetable – any variety
22. Any other vegetables not listed above

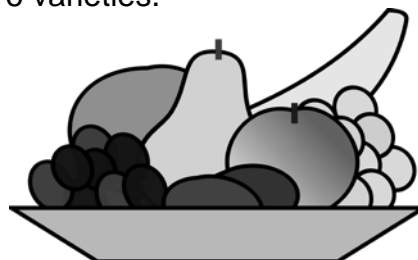


HERBS

- 23 A jug of mixed herbs – home grown – no more than 6 varieties.

FRUIT

- 24 Soft or stone fruit on a dinner plate
- 25 Any other fruit on a dinner plate



FLOWERS

The exhibitor with the best exhibit in Classes Nos 26 to 43 will be awarded the ***Cecil Webb Challenge Bowl***

The ***Charles and Anne Cooke Challenge Cup*** will be awarded for the most points in Classes Nos 26 to 43

The ***Jimmy Young Cup*** will be awarded for the best exhibit in Class Nos 26 and 27

26. Sweet Peas, 3 varieties, 3 stems of each (1 container)
27. Sweet Peas, 1 variety, 9 stems (1 container)
28. Collection of flowers, 3 distinct kinds, 3 stems of each (1 container)
29. Annuals, not less than 3 kinds – 6 stems altogether (1 container)
30. Gladioli – 1 stem
31. Sunflower – 1 head
32. Foliage plants – 3 stems in container not exceeding 20 cm – 8"
33. One pot plant in flower (not a Fuchsia). Pot not to exceed 20 cm – 8"
34. One ornamental pot plant – foliage only. Pot not to exceed 20 cm – 8"
35. One fuchsia in pot. Pot not to exceed 20 cm – 8"
36. Lavender – 1 variety or mixed. 9 stems (1 container)
37. One geranium or pelargonium. Pot not to exceed 20 cm – 8"
38. Display of flower heads in a bowl of water. Bowl not to exceed 25 cm – 10"
39. Patio container of mixed plants. Container not to exceed 55 cm – 22"
40. 3 heads of hydrangeas – mop head
41. 3 heads of hydrangeas – lacecap
42. Cactus or succulent in flower (Please state approx. size for staging)
43. Ornamental cactus or succulent (Please state approx. size for staging)

The exhibitor with the best bloom(s) in the Dahlia classes will be awarded the ***Mabel and Leonard Cooke Challenge Trophy***

- | | |
|------------------------------|----------|
| 44. Dahlias – Specimen | 1 bloom |
| 45. Dahlias – Cactus | 3 blooms |
| 46. Mixed display of Dahlias | 7 blooms |

The ***Fred Griffen Challenge Cup*** will be awarded to the exhibitor obtaining the most points in Class 47

47. A collection of flowers in 1 container, not more than 12 blooms (stems) and not more than 2 of each distinct kind (species)



ROSES

The Cecil Aldred Cup will be awarded to the best rose(s) in Classes 48–53

- 48. Roses 1 variety, 4 blooms
- 49. Roses mixed, 4 blooms
- 50. Roses 1 spray climbing pillar or rambler (not HT*) not to exceed 15" in height
- 51. Roses, vase of polyantha or floribunda, 1 variety, 3 sprays, not to exceed 25" in height
- 52. Miniature rose in pot
- 53. Rose, 1 bloom, HT*



* **Hybrid Tea (HT)** is an informal horticultural classification for a group of roses. They were created by cross-breeding two types of roses, initially by hybridising hybrid perpetuals with tea roses.

FLORAL DECORATIONS

Open to both men and women – beginners welcome

The Exhibitor obtaining the most points in Classes 54–58 inclusive will be awarded the *Two Sawyers Cup*

The *Albert Standen Trophy* will be awarded for the best exhibit in Classes 54–58 and Class 83

The *Albert Luck Cup* will be awarded to the best exhibit in the Novice Class 58

The only height restriction is for the 'Petite' exhibit and all the class titles are associated, with the theme of 'King and Country':

- 54. **Country Estate** An arrangement using only foliage and natural items (no flowers) *Not to exceed 24" wide. No height restriction.*
- 55. **The King's Coronation** A flower arrangement using any container fit for a king!. *Not to exceed 24" wide. No height restriction.*
- 56. **My Dear Mamma** An arrangement to include a photo frame. *Not to exceed 12" in width. No height restriction.*
- 57. **This United Kingdom** An arrangement using any container. *Not to exceed 24" in width. No height restriction.*
- 58. **NOVICE CLASS: The Royal Walkabout** A petite posy arrangement using delicate flowers and foliage. *Not to exceed 9" in width and height.*

NB. NATURAL PLANT MATERIAL MUST PREDOMINATE IN ALL CLASSES.

Bases and a modest use of accessories may be used to enhance your exhibit, but not overwhelm it.

The **NOVICE CLASS** is **OPEN** to all those who have **NOT** won a first prize in **ANY previous Floral Decoration Class** of the **PETT FLOWER SHOW** or **ANY** Flower Arrangement Show judged under the National Arrangement Society Schedule Definitions. Please note **THIS IS A VILLAGE SHOW** – the exhibits will **NOT** be judged by **NAFAS** Rules. Please refer to Rule 14 on Page 2 of this schedule.

HOME PRODUCE – Open to all

The *Pam Dunlop Challenge Cup* will be awarded for the most points in Classes 59–74b

The *Joan Parks Trophy* will be awarded to the winner of class 65

Please note that 1lb (450 gram) jam jars must be used, apart from class 62

59.	Jam – stone fruit	1 lb jar
60.	Jam – soft fruit	1 lb jar
61.	Marmalade	1 lb jar
62.	Fruit curd – not less than ½ lb (250 g)	1 jar
63.	Jelly, sweet or savoury	1 lb jar
63a	Handmade sweets – any variety	6
64.	Chutney or relish	1 lb jar
64a	Pickles or Piccalilli	1 lb jar
65.	Coffee walnut cake (see recipe below)	1
66.	Bakewell tarts (individual)	4
67.	Ginger parkin loaf	1
68.	Chocolate cup cakes	4
69.	A wholemeal cob loaf (800 g)	1
70.	Fruited teacakes	4
71.	Shortbread – in memory of Doreen McCausland	4
72.	Drop scones	4
73.	Cheese and onion rolls (puff pastry)	4
74.	Gluten-free cake	1
74a	Homemade drink – alcoholic	1 bottle
74b	Homemade drink – non-alcoholic	1 bottle



75. The Show Stopper – on the theme of King & Country, Make a cake of your choosing, no bigger than 12 x 12 x 12 inches. No fresh cream.

Any excess of home produce will be very welcome for teas or the produce stall.

Coffee Walnut Cake

Ingredients

175g/6oz butter
175g/6oz soft brown sugar or
caster sugar
3 eggs
175g/6oz self raising flour
1/2 teaspoon baking powder
50g/2oz chopped walnuts
100ml black coffee made using 2
teaspoons instant coffee

Icing

100ml black coffee (as above)
175g/6oz butter
350g/12oz icing sugar
Extra walnuts to decorate
2 x 6inch/19cm sandwich tins lined
with grease proof paper

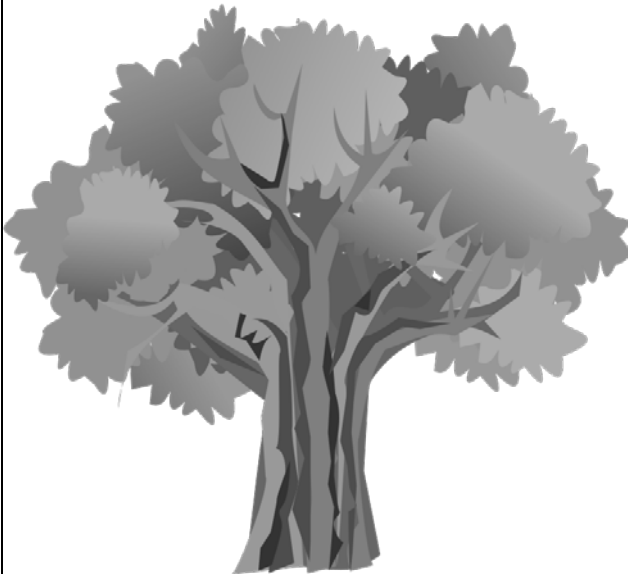
Method

1. Heat oven to 170C fan/ No. 5 gas
2. Cream butter and sugar until very light and fluffy
3. Add eggs one at a time beating each one in well
4. Add cooled black coffee and beat in
5. Add sifted flour and baking powder and chopped walnuts and fold in carefully .
6. Divide mixture equally between the 2 sandwich tins spreading the tops level
7. Bake for approximately 25 minutes
8. Turn out onto cooling rack and allow to cool
9. Make the icing by beating the butter until soft, gradually adding the icing sugar and black coffee until the mixture is soft and fluffy
10. Spread half the icing onto one of the cakes until level
11. Place the second cake on top and spread the rest of the icing on top
12. Finish with the extra walnuts as decoration

ELMTREE BOOTSALES 2023

07891 345528 (Weather Permitting)

**Cars £8.00, Vans £10.00, Transits £15.00,
+ £3.00 for trailers**



DATES FOR 2023

Sun 9th April
Sun 23rd April
Mon 1st May
Sun 7th May
Sun 21st May
Mon 29th May
Sun 4th June
Sun 18th June
Sun 2nd July
Sun 16th July
Sun 30th July
Sun 13th August
Sun 27th August
Sun 10th September
Sun 24th September
Sun 8th October

**OVER £5,860 WAS RAISED FOR LOCAL
CHARITIES DURING THE 2022 SEASON**

THANK YOU FOR YOUR SUPPORT

st michael's hospice Open Gardens Pett



Saturday 3rd June, 10.30am - 4pm

There are 4 wonderful gardens to explore. Come along and relax
in the beautiful surroundings.

**£7.50
Entry**



For the full addresses and for more details please see the Hospice
website, purchase an Open Garden booklet or contact **01424 456396**



www.stmichaels-hospice.com
Registered charity number 288462

Flower Show Entry Form – 29 July 2023

All exhibits to be staged between 8.30am and 10.15am

ENTRY FORMS MUST BE SENT IN BY **8 PM ON WEDNESDAY 26 JULY**

Include Entry Form and Entrance Fee (30p per class) in an envelope

Class No:	Description of Exhibit

I certify the above entries conform to the Show Rules

Signature: _____ Age (Young People's Classes): _____

Name [**Block capitals**] Mr/Mrs/Miss _____

Address: _____

Tel. No.: _____

Email: _____

REMINDER! Age must be stated in Young People's Classes.

A SEPARATE ENTRY FORM IS REQUIRED FOR EACH FAMILY MEMBER

ADDITIONAL FORMS CAN BE DOWNLOADED FROM WWW.PETTNET.ORG.UK

ROYAL OAK

FREE HOUSE PETT

01424 812515 royaloakpett.com

Open Every Day

**We Look Forward
to Seeing You**



SUPPORTING THE PETT FLOWER SHOW 2023

Serving home cooked food, real ales and selected wines



The Two Sawyers

Pub, Restaurant and Accommodation

Pett Road, Pett Village, Hastings, East Sussex, TN35 4HB.

Tel: 01424 812255

Character Freehouse with bars, restaurant and large garden,
serving food twice daily, Monday - Friday, Saturday and
Sunday. Superb real ales, including Harvey's Best Bitter. Great
seasonal menus featuring fresh local fish and game.

"Good food, good service and a great atmosphere"

www.twosawyers.co.uk -  www.facebook.com/TwoSawyers

YOUNG PEOPLE'S CLASSES

See Rule 11 on page 2 regarding tie-break.

The *Cecil Bacon Talent Cup* to be given to the person under 14 whose drawing or painting is considered to show the most promising artistic talent

Under 5 Years (Child and helper)

The *Hewitt-Jones Cup* to be awarded to the winner of this Section

76. Paint or draw a picture of **The King**

5–8 Years

The *Preston Ebbutt Challenge Cup* to be awarded for the most points in this Section

77. Make **a crown**

78. Paint or draw **the Coronation Coach**

79. Grow **country flowers in a 4 inch pot**

9–14 Years

The *Goldsmith's Trophy* to be awarded for the most points in this Section

80. Paint or draw a picture of **the Coronation**

81. Make **an Orb and Sceptre**

82. Grow **a garden in a seed tray**

All Young People, 14 Years and Under

83. A floral arrangement in a glass or plastic container. Not to exceed 12" wide or 12" in height

84. Make the cake recipe on page 6. The winner will receive the *Darnell Plate*.

85. Design **a tea towel illustrating the Flower Show** (design A4 size). The winning design will be printed and sold at next year's show and there will a cash prize.

See also Classes 88, 94 and 96 on page 12.

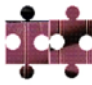





www.ashleydevelopments.com

Ashley Developments is a well-established family run construction and development company founded in 1976, having successfully designed and built a wide portfolio of new builds, conversions and restoration projects across the Hastings and South East area. As a family run business we are passionate about building homes that we can be proud of and have worked hard to establish an excellent reputation.

**REMINDER: YOUNG PERSON'S AGE MUST BE STATED
IN ALL CLASSES 76–85, 88, 94 and 96**

Outside Events And Attractions

	Brass Band		Tea Room		Books and Puzzles		
	Produce Stall		Coconut Shy		Putting		Ice Cream
	Bottle Stall		Tombola		Crockery Smash		Grand Raffle
	Dog Show		Pimms and Beer Bar				





Bar & Kitchen on the Beach
 Home of the New Beach Sea Angling Club
 Pett Level, Hastings, TN35 4EH
info@thenewbeachclub.co.uk
 01424 812080
www.thenewbeachclub.co.uk
[Facebook.com/newbeachclub](https://www.facebook.com/newbeachclub)

Regularly Changing Guest Ales

Weekly and Monthly Social Events

Regular Live Music

Free Venue Hire to Members

Free Wi-Fi

Annual Membership
 Individual: £18, Joint: £32
A small joining fee (£2 / £3) is payable by new members

OPEN CLASS (AMATEURS ONLY) FINE ART

86. Painting entitled '**King & Country**' – a painting or drawing in any medium, not to exceed 51 cm (20 inches) square. The *John Rootes Cup* will be awarded to the winner of this section

N.B. No computerised pictures or photographs allowed in this section.

The name of the artist must not be identified

OPEN CLASS (AMATEURS ONLY) PHOTOGRAPHY



- 87 Photograph – '**Our Realm**'

- 88 The **J. McCausland Trophy** will be awarded to the best photograph '**Our Realm**' from anyone under 16.

HANDICRAFTS – ADULTS

The *Beryl Rootes Cup* will be awarded to the best exhibit in Classes 87–90 inclusive.

No items to have been displayed previously at the Pett Flower Show

89. Any hand knitted, crocheted garment or other item
90. Make a **Gift fit for a King**
91. Miscellaneous – any item of embroidery, tapestry, cross stitch, needlework etc.
92. Miscellaneous – any item of pottery, papier maché, woodwork or craftwork

MODEL-MAKING (SCRATCH-BUILT OR FROM A KIT)

- 93 The **Ron Dean Cup** will be awarded to the adult entering the best hand-made model.
94 A cash prize of £20 will be awarded to the young person (under 16) entering the best hand-made model.

A model in the context of Classes 93 and 94 is a representation of a real-life object, such as a ship, a train, an aeroplane or a car, in any medium. Judges will be looking for accuracy, craftsmanship and degree of difficulty.

- 95 The **Diedre Dean Plate** will be awarded to the adult who best exercises their imagination to create a miniature scene (or single object).
96 A cash prize of £20 will be awarded to the young person (under 16) who best exercises their imagination to create a miniature scene (or single object).

In Classes 95 and 96 the judges will be looking for originality and creativity, again in any medium.

QUEEN ELIZABETH II DIAMOND JUBILEE TROPHY **kindly donated by Rother District Council**

This will be presented to the exhibit that best reflects the theme – this year '**King & Country**'. The winner will be selected by our President.

FRESH, LOCAL PRODUCE

Beef, Lamb, Pork
and Chicken raised to
High Welfare Standards
and locally sourced
wherever possible

Wide range of
Homemade Sausages
and Burgers

Fruit and Vegetables
Local Seasonal Produce
Available to order

Locally Made Bread
Local Milk
Range of Groceries

Newspapers Mon - Sat
1st & 2nd Class Postage
Stamps in stock

OPENING HOURS

Mon 8.00 am to 1.00 pm
Tues 8.00 am to 4.00 pm
Wed 8.00 am to 1.00 pm
Thurs 8.00 am to 4.00 pm
Fri 8.00 am to 4.00 pm
Sat 8.00 am to 3.00 pm

For News and Offers
follow us on Facebook:
@pettbutchersshop

PETT ROAD, Guestling
Tel: (01424) 812048
Email: theoldbutchersshoppett@gmail.com
Web: www.oldbutcherspett.co.uk



Tic Toc

3 THE LYNDENS
PETT ROAD
PETT
TN35 4HD
01424 814554

Hair Salon

TUE - SAT 9:30 TO 5:30

APPOINTMENTS ARE NOT ALWAYS
NECESSARY.

FREE CONSULTATIONS AVAILABLE.
PLEASE NOTE THAT A SKIN-TEST IS
REQUIRED 48 HOURS PRIOR TO ALL
COLOURING SERVICES.

The Tic Tocory Tea Room

SEASONAL HOURS

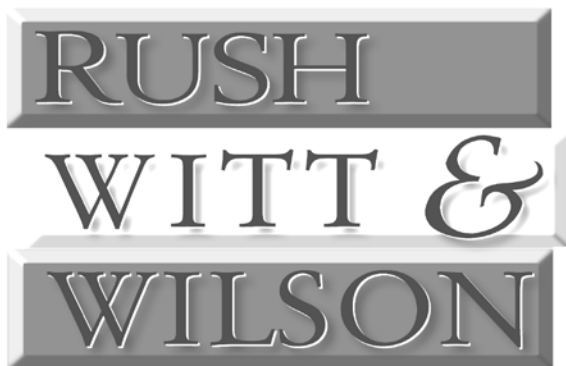
WE OFFER A FABULOUS SELECTION
OF DELICIOUS CAKES AND PASTRIES
AND A VAST SELECTION OF HOT AND

COLD DRINKS ... ALL WITH A

BEAUTIFUL VIEW TOO!

PRIVATE PARTIES ARE ALSO
AVAILABLE BUT MUST BE BOOKED IN
ADVANCE AND CAN BE PERSONALISED
UPON CONSULTATION.

DOG FRIENDLY



Residential & Commercial
Estate Agents
Valuers & Auctioneers
Rentals & Property Management

www.rushwittwilson.co.uk

SPONSORS OF THE 2023 DOG SHOW



FUN DOG SHOW



We are delighted to be holding our Fun Dog Show again this year – with emphasis on the FUN. The classes will be as follows:

1. Best Rescue
2. Dog that most looks like its owner
3. Best Veteran (7 yrs plus)
4. Best Puppy (6–12 months)
5. Prettiest Bitch
6. Most Handsome Boy
7. Scruffiest Dog
8. Best Trick
9. Dog with the waggiest tail
10. Best in show for first placed in all classes

The Judge is Lucia Elliott

Rosettes awarded for
1st to 4th places

The *John Pecorini Cup* will be
presented to the best dog in
the show

Enquiries please to:
southcoastdt@gmail.com

Entry Fee: £2.00 per dog per class
Three classes £5.00
Cash only

Entries accepted from: 1.45 pm

Judging will commence at: 2.15pm



RULES

No puppies under 6 months or bitches in season

No reserve or CC winners or junior warrant winners accepted

The Organisers accept no responsibilities for damage or loss to persons or property

Dog Owners are responsible for cleaning up any animal deposits and disposing of them.

It is the responsibility of parents/guardians that if children are participating in an event that they have total control of the dogs they are handling.



Please bring water and a bowl for your dog

HINTS & TIPS FOR EXHIBITORS

ONIONS and GARLIC should be large, firm, thin necked, not too skinned, well-ripened, tops cut off leaving enough to be turned over and tied neatly.



This also applies to sets.

CARROTS leaves cut to 2 ins, neatly tied, root clean and tap root left on.

BEETROOT should be clean, free from blemishes, not light in colour, tap root left on and about the size of a tennis ball. Leaves cut to 2 ins



RUNNER BEANS uniform in size and thickness, number in accordance with schedule, stalks all at one end. Wrap in a damp cloth to keep fresh.

PEAS cut with scissors, hold by stalk, no bloom should be removed to spoil the appearance.



LETTUCE lift roots intact, remove soil, wrap in damp cloth. Should be firm with no trace of bolting.

TOMATOES Firm fresh calices stage with the calyx uppermost.

RASPBERRIES and LOGANBERRIES fruits should retain calyx.

CONTAINERS for flowers, etc. should be provided by the exhibitors.

For lots more advice, see www.rhs.org.uk/advice

Entry Forms and Fees

Don't forget your Entry Forms and Fees must be in by

Wednesday 26 July 2023

We look forward to seeing you all at the show on Saturday 29 July

PETT AND DISTRICT HORTICULTURAL SOCIETY



President:

Ray Barden, Nedrabs, Pett

Vice-Presidents:

Anne Barker, Gatehurst Farm, Pett
Jenni Crisford, Jacques, Pett
Diane Crouch, Merrie Winds, Pett
Andrew Dunlop, Lunsford Farm, Pett

Chair:

Philippa Strickland, Adams, Pett ~ Tel: 814384
pstrickl@icloud.com

Hon. Treasurer:

Paul Brown, Stanton House, Pett ~ Tel: 814795
paulhvbrown@gmail.com

Hon. Secretary:

Louise Bowles, Fairholme, Pett ~ Tel: 812296
lou.bowles192@gmail.com

Publicity Officer:

David Penfold, Jasmine Cottage, Pett ~ Tel: 813003
penfold@eps-edge.co.uk

Committee Member

Angela Gastrell, Windy Ways, Pett – Tel: 813593
angelagastrell@hotmail.co.uk

Hon. Auditor:

Gillian Plank, Sweet Briar Cottage, Guestling



The Society is very grateful to Sarah Donnelly, who has kindly designed the attractive logo for the show

The object of the Society is to stimulate interest in the production of flowers, fruit and vegetables by holding at least one show of garden produce annually

**DONATIONS TOWARD THE EXPENSES OF THE SHOW
WILL BE VERY WELCOME**