

DECEMBER HIGH TIDES AT RYE HARBOUR APPROACHES

Date	Day	Time (hrs)	Height (m)	Time (hrs)	Height (m)
1	Thursday	0245	3.2	1515	2.7
2	Friday	0338	2.8	1610	2.4
3	Saturday	0430	2.6	1711	2.1
4	Sunday	0532	2.4	1823	2.1
5	Monday	0643	2.4	1932	2.2
6	Tuesday	0748	2.5	2027	2.5
7	Wednesday	0840	2.7	2112	2.7
8	Thursday	0925	2.8	2152	3.0
9	Friday	1003	3.1	2238	3.2
10	Saturday	1039	3.2	2303	3.3
11	Sunday	1114	3.2	2336	3.4
12	Monday	1148	3.3	-	-
13	Tuesday	0010	3.4	1222	3.3
14	Wednesday	0044	3.4	1257	3.3
15	Thursday	0120	3.4	1335	3.2
16	Friday	0201	3.2	1419	3.1
17	Saturday	0248	3.0	1511	2.8
18	Sunday	0345	2.8	1615	2.6
19	Monday	0451	2.7	1734	2.5
20	Tuesday	0556	2.6	1854	2.6
21	Wednesday	0721	3.1	2003	2.8
22	Thursday	0839	3.3	2103	3.1
23	Friday	0927	3.6	2159	3.3
24	Saturday	1024	3.7	2258	3.6
25	Sunday	1116	-	2336	3.8
26	Monday	-	3.8	1201	3.7
27	Tuesday	0019	3.8	1243	3.6
28	Wednesday	0100	3.7	1323	3.4
29	Thursday	0140	3.4	1403	3.2
30	Friday	0220	3.2	1445	2.8
31	Saturday	0302	3.2	1530	2.6

pettparishnews@live.co.uk

BUSINESS ADVERTISING RATES

Annual Whole Page: £180.00 ~ Annual Half Page: £90.00

Annual Third Page: £60.00 ~ Annual Quarter Page: £45.00

Additional £6.00 per annum for inclusion on the Petts Parish web site

Hi

..... I would like to start off with a few 'thank yous' to round off 2011. To all the 20 or so distributors who give up their time each month to deliver the Parish News; to Brenda who co-ordinates the distributors and handles the postal copies; to Tony and Phil who sell the

Parish News; to everyone who contributes articles and to Peter Wiggins who also voluntarily runs PettNet – a big thank you to all of you, we cannot do without you guys. My thanks also to Sarah without whose assistance I could not cope!

We say goodbye this month to Bob Hodgson our Parish Clerk. We thank him for a difficult job well done and wish him well for the future. Welcome to our new Clerk, Jane Buller, who we hope will settle in with us very soon.

There are two very popular fund raising events this month, 'Carols in the Barn' in aid of Farm Africa on the 17th and Carol singing through the village on the 19th in aid of 'surviving Christmas'. Full details can be found within these pages and we hope you will give your usual generous support to these events.

Congratulations to Petts very own centre for senior citizens, POPP (which is held every Tuesday in the Village Hall) on becoming a **big Lottery Fund grant recipient**. This grant will be used to guarantee the success of this ambitious project.

Sarah and I would like to wish you all a very Happy Christmas and a prosperous New Year

Jackie (Editor)

Copy for the January edition can be sent to us by email on

pettparishnews@live.co.uk

or delivered to me, Jackie Richards at Ambleside (815224), or Sarah Adams at Seawinds (812323), both on Pett Road. **The deadline for copy is MID-DAY the 15th December** and anything you can get to us before that date is greatly appreciated. Any copy after this time will be entered in the following month's issue.

STOP PRESS: At the Council meeting on the 15th November the Councillors voted with a show of hands of 2 for and 5 against the Exception Site housing.

Whilst every effort has been made to ensure the accuracy of the information supplied herein, the editor cannot be held responsible for any errors or omissions. Unless otherwise indicated, opinions expressed herein are those of the authors of the individual articles and adverts, and they do not necessarily represent the views of the editor, nor can the editor uphold or recommend any advertiser here within this publication.

E&OE

The Royal Oak

Serving Home Cooked Food, Real Ales and Selected Wines



*Bookings still available for our
Pre Christmas Menu
served from Dec 8th ~ 21st by reservation*



New lunch menu served Monday to Friday

Thursday 8th Dec 8.30 pm
Live Jazz & Blues with SMOKESTACK

NEW YEARS EVE PARTY
1980's Disco and Fancy Dress with Michael Hambridge

Our Current Opening Hours

Bar
11am - 11pm
Monday - Saturday
12noon - 10.30pm Sunday

Food Served
12noon - 2.30pm
6 - 9.30pm
Monday - Saturday
12 noon - 5pm Sunday

"Bar Only open 12 Noon - 2pm Christmas Day and Boxing Day"

Telephone: 01424 812515
Web: royaloakpett.com

PETT OLDER PEOPLES PROJECT ~ NOVEMBER NEWSLETTER

Already four weeks has passed and we start our next month of running POPP. Our team have been working really hard to pass the word round to the locals and every week I am pleased to see further new faces arrive at the door. We are gradually filling up and it's nice to see our group coming together as we all get to know one another.

We kicked off on the 4th October with Keith Osborne who will be returning regularly with his Music for Health workshops. I think we were all taken back to the War Years with Pam Viebre and many of you bought her lovely jewellery and teddy bears. The following weeks we had singing from Carol Mellow and useful information from Wendy Butler from Hastings and Rother Voluntary Association for the Blind. So what's next?

We have been awarded funding from Age UK to run a series of Fit as a Fiddle workshops starting on 15th November with, guess who, Keith Osborne and Music for Health. The workshops will run for approximately 8 /10 weeks and will focus on keeping fit. This will include exercises and some demonstrations of Thai Chi and a talk from a physical trainer who will give us all some ideas on keeping mobile. We will have reflexology, Breathing and Relaxation exercises and Chair Based Exercises, Singing and Dancing.

Christmas is just around the corner and we are mentioning now that our Christmas Party will be 20th December with traditional Christmas Lunch. We will then be closed on Tuesday 27th December and will resume back again in the New Year on Tuesday 3rd January.



Jack Barlow is British Champion

Jack Barlow has won one of the most prestigious championships in British karting, completing a historic treble.

The Pett teenager scooped the Ginetta Super One Junior Rotax crown at the Three Sisters circuit in Ashton-in-Makerfield, near Wigan on Sunday (16 October), to add to his impressive tally of victories; including the Kartmasters Grand Prix and Rotax Cup titles.

16 year-old Jack had gone into the seventh and final round of the series leading by just a handful of points, but was in confident mood, having won the Rotax Cup event just two weeks earlier (25 September).

In the interim, keep up to speed with Jack and his racing career by visiting www.jackbarlowracing.co.uk



Photo: Chris Walker/Kartpix

Gatehouse Tiling

Supply and installation of quality floor and wall tiling

Family run local company offering a prompt, reliable, clean & accurate customer focused service

Using only quality materials, all installations & repairs professionally undertaken

Ceramic, Natural Stone, Porcelain, Slate, Travertine, Mosaic, Marble & Victorian tiles **all at trade prices**

For a free highly competitive estimate please call **Richard**

07917 195583 or 01424 752730

Email:

richard@gatehousetiling.co.uk

LOGS FOR SALE



£4 PER NET BAG

01424 812372

Or

07864 648231

Free local delivery

Stoneley

Garden Machinery Sales and Services
All makes serviced

Most makes sold at competitive prices
Now

Incorporating Castle Lawns

All lawn care work undertaken

Mowing, Aerating, Scarifying,
Weed Control, Fertiliser, Top Dressing,
Seeding, Turfing, Logs.
All other garden work undertaken

Call us today for a free quote

Prices start from £15.00 per treatment based on a lawn up to 60m²

For more information visit

Website: www.castlelawn.co.uk email: derel@castlelawn.co.uk

Or call

01424 812 310 / 07817 795 142

PETT TENNIS CLUB



Open to everyone

Play any time - no need to book
Situating at Pett Recreation Ground

Annual subscription:

£24.50 junior & student ~ £40 adult

£100 Family

Contact:

Dennis Lanner

01424 812430

AUTUMN AT PETT LEVEL ~ Brian Roberts

It is certainly not like "the Fall" here, as it has been a very busy building time.

After a huge clearing job and some impressive bonfires the two new builds at Cliff End are going up at a great rate, as are the two houses on Canal Bank. Other properties are going upwards, outwards and downwards. Not to be left out the Pett Level Rescue Boathouse has given birth to a twin to contain some much needed new equipment for the hard working and dedicated volunteers to help keep our area a safer place. There have been a lot of funding initiatives already, but there will be more chances if you haven't already donated.

The Lewpar bird is happily still seen at his usual site on the slipway or roosting in the snug nearby where he will tamely feed and drink from your hand. The New Beach Club and The Smuggler give good value for money with their food and drink, quizzes and other activities including their support of early bar rock bands for the discerning music lovers who are often invited to join in on a variety of rare medieval instruments.

On the downside our lovely beach, sea wall and footpaths continue to be used as dogs toilets. Disgusting - particularly as there are an adequate amount of bins. The beach has its usual amount of rubbish, plastic bottles and wrappers. On the other side of the sea wall most of the plastic is shoulders, hips, knees and other joints!

It is still a lovely place to live and we must all try to preserve it for the future.

Another gem not far away is Rye Harbour Nature Reserve with its network of accessible footpaths, allowing everyone to enjoy this unique

shingle habitat with its lagoons, scrapes and shoreline. Birds, plants and animals, many rare and endangered can be seen here or just enjoy the scenery. Five hides (all with wheelchair access) many seats and an information centre plus the bonus of a large free car park. Don't miss it!

With this edition of the Parish News you will receive your updated Pett Flood and Emergency Plan.

Stir Crazy Club ~ Wendy Burgess

The Stir Crazy Club has a sale of their goods at the **New Beach Club Table Sale on 4th December**. All funds raised by them will be donated to the Pett Level Rescue Boat.

The girls of the Stir Crazy Club would like to thank the generosity of all those in and around the village who have been kind enough to donate fabrics, haberdashery etc., without which we wouldn't be able to function. Season's Greetings to all.

SORRY

We included a letter last month which indicated that Fraysland Farm had been sold. It is our understanding now that the farm is no longer on the market.

Our sincere apologies to the Jury's for this miss-understanding and to reassure our readers that the milk round will not be affected.

THE BUTCHERS SHOP

PETT ROAD, PETT

(01424) 812148

Personal Friendly Service

Quality Scottish Beef

Prime Pork

English Lamb

Home Cooked Ham

Seasonal Meats

Barbeque Ideas

Delicatessen

Traditional Home made

Sausages & Burgers

Fresh Bread & Milk

Saturday Newspapers

Also in stock are

Frozen goods, ice creams &
conestibles

FENCING

ALL TYPES OF FENCING
SUPPLIED AND ERECTED

25 years experience - examples of our
work throughout the village

For free estimates and advice contact



JOHN OSBORN

Pett 01424 813564 / Mobile 077514 92821

Also Hedge Cutting

Tree Surgery

Mowing

Garden Clearance

OUR LOCALITY IS OUR GUARANTEE



NEED A PLUMBER?

Ray Barden

Plumbing & Heating

01424 812551

ALL ASPECTS OF PLUMBING &
HEATING UNDERTAKEN

40 YEARS EXPERIENCE IN PETT AND
SURROUNDING VILLAGES

No job too large
or too small



HARC CHARITY SHOPS

Welcome Your

Unwanted Items
Including Furniture

Free collection

But please no refuse



01424 720500/722164

Mon - Fri 10 am - 5 pm

Saturday 10 am - 4 pm

Registered Charity

1083566

PETT CHURCH NEWS ~ Meriel Deasy

VILLAGE QUIZ NIGHT

Hymn: 640: "the great church victorious"

Yet again, the church managed to raise four
teams to take part in the recent Quiz Night - and
one of our teams won! As far as the other three
are concerned - well, we know it's the taking part
that counts!

It's always a good evening out and a thoroughly
enjoyable occasion.

CHRISTMAS - dates for your diary:

Sunday 11 December: Toy Service, Pett Methodist Chapel, 10.45 a.m.
*All gifts will be donated to our local childrens'
care centres.*

Saturday 17 December: Carols in the Barn, Pickham Farm,
Watermill Lane: 6.30 pm

Monday 19 December: Carol Singing through the village, followed by
refreshments with John and Ray Taylor at
Paxstead. Meet at the church: 6.45 p.m.

CHRISTMAS EVE

Saturday 24 December: Pett Church, 3 p.m.
Christingle and Nativity Service

Saturday 24 December: St Laurence, Guestling, 11.15p.m Midnight Mass

CHRISTMAS DAY

Sunday 25 December: Pett Church, 9.30 a.m.
Parish Communion led by Rev. Frank Rowson

Please help support these services - everyone is always welcome.

NEW RECTOR

The Bishop has, at long last, given us the go-ahead to advertise for a
new Rector. By the time you read this we will have been in interregnum for
nearly two years. We hope that we will be able to appoint a new Rector
within the next few months, but there are many vacancies in our area that
have to be filled - WATCH THIS SPACE

Meanwhile, we are grateful to the Revs. Frank Rowson, David Wotton, and
Kay Burnett who are doing so much to keep the parish of Pett going.

A CHRISTMAS PRAYER FOR PETT

May the humility of the
shepherds,
the faith of the wise men,
the joy of the angels
and the peace
of the Christ Child
be God's gift to us
and to all men, this
Christmas and always.

STOATS ARE 'STOATALY' DIFFERENT.....

By Mike Russell of Sussex Wildlife Trust www.sussexwt.org.uk



There can't be many people who at some time in their life who haven't enjoyed reading 'Wind in the Willows' and will undoubtedly recall that the 'baddies' in Kenneth Grahame's much loved classic are undoubtedly the stoats and weasels who occupied Toad Hall.

In fact, overtime they have both generally generated an unpopular reputation and even outright hostility, the epitome of what we think of as vermin. Amongst landowners the only time they liked to see them was when their bodies were strung out in a line on a gibbet! 'Weasely' has entered our vocabulary to describe someone who is a shifty and untrustworthy. So, I think it's about time that these two unpopular creatures had a public image makeover.

Neither of them is uncommon, they are widespread throughout the UK although the weasel is not found in Ireland. You are likely to encounter them along field edges and ditches in the longer grasses and stoats in particular don't like to be out in the open whereas weasels have a wider range of habitat and are more likely to be seen in urban areas.

So, if you see one, how will you tell the difference? Stoats are bigger though by not much. What you have to look at is the tail and if there is a black tip to it then you are looking at a stoat. The other name you might know a stoat by is ermine as they sometimes turn white in winter, especially the further north

you go, but this is an unlikely occurrence in Sussex. Weasels are really pencil thin, long, sleek and very quick, but essentially the pattern of the fur on both mammals is very similar. In the end to identify them you might have to come down to a very unhelpful saying 'weasels are 'weasely' told and stoats are 'stoataly' different!

That they are voracious and clinical hunters is without doubt and their unpopularity and subsequent persecution resulted from their occasional forays into game pens where, as with any predator, faced with an abundance of potential prey will go on a frenzied killing spree. Despite their similarities there doesn't appear too much competition for food between them. Stoats will go for larger prey items, mainly rabbits and water voles whereas weasels prefer smaller mammals such as mice and voles, though they will both take eggs, chicks, insects and worms. Their success depends on the amount of food available and fluctuates from year to year; starvation is the main cause of death for both species.

I have had a few encounters with stoats and weasels over the years and, although not always pretty, have been very entertaining. I was watching a nestbox at Woods Mill many years ago in which resided a family of great tits when a weasel rapidly climbed the tree and managed to squeeze through the entrance hole of the box and undoubtedly made short work of the chicks. Well you can't consume

what probably amounted to at least half your own body weight without having an impact on the waistline and, sure enough, the weasel was now too fat to get out the hole. For the next 30 minutes I watched him gnaw at the hole to make it big enough to slip out, a monumental effort that required so much energy that probably made it ravenously hungry again.

The whole ecological system by which we all survive requires predator-prey relationships and stoats and weasels are a very effective part of that system, and shouldn't be vilified for that role. If you do come across them stay quiet and still as they will often be unaware of your presence and you might well be rewarded by observing some natural, very energetic and entertaining behaviour by one of our most charismatic mammal species.

Carols in the Barn ~ Tim Jury

On **Saturday 17th December** at 6.30pm Tim Jury will be hosting the annual 'Carols in the Barn' in aid of Farm Africa.



It takes place at **Pickham Farm**, Watermill Lane and will be held in a proper barn with the farm animals. Enjoy a real traditional festive event singing all your favourite carols and tuck into mince pies and mulled wine.

Just bring a donation to Farm Africa along as there are no tickets but it does take quite a bit of organizing. See you there.

PETT WI - Heather Godwin



Mr John Proctor's talk to the members of Pett WI in October, on National Service in Malaya, was very entertaining and informative. His sea journey to Singapore as a rookie serviceman had many interesting and amusing moments as he watched other servicemen become the worse for wear from the stormy seas. He sailed through the Suez Canal and in the Indian Ocean he saw flying fish and dolphins. He was eventually sent to a military hospital where he was trained as an orderly, and had many tales to tell about his time there.

Members congratulated no fewer than seven "birthday girls" celebrating birthdays in October!

The next meeting, on Friday November 18th is the AGM, when a new committee will be elected, and on Friday, December 16th the Christmas meeting will take the form of a Christmas Lunch at The Two Sawyers.

If you are interested in coming along to any of our meetings at Pett Village Hall on the third Friday of every month, please contact Mrs Elliot, the President on 01424 813000, or email heathergodwin@lineone.net

If you join as a member in November you get 14 months for the price of 12 as well as friendship, tea and cakes - a bargain!!



NEW BEACH CLUB

Pett Level Road, Pett Level, East Sussex TN35 4EH
01424 812080

Christmas Table Sale ~ 4th December 11.30am

We are open on Christmas Day from 12 noon – 3pm

Every Monday 8 pm ~ Quiz night
First Tuesday Monthly 7.30 pm ~ British Legion meet

Take Away Menu now available to eat at home or on the beach

Cafe opening times: Mon 12 – 2.30
Wed, Thurs & Fri 12 – 2.30 & 6 – 8.30
Sat 12 – 3 & 6 – 8.30 Sun 12 – 4

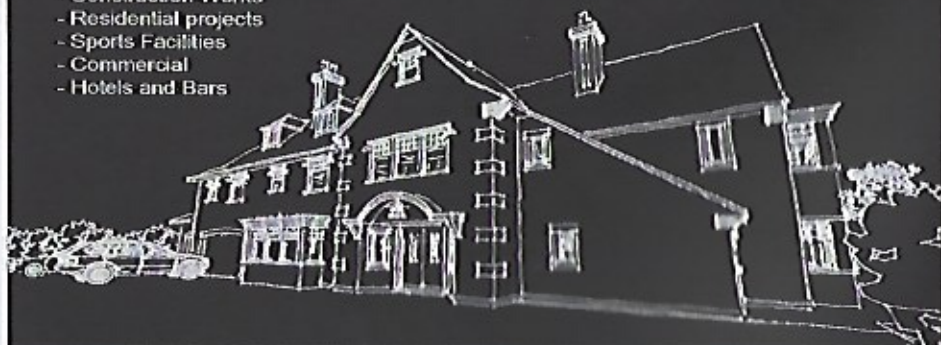
Meeting room available for local organisations
(Subject to availability)

Contact - Stuart Ware
t: 01424 813332
e: studio2@bwparchitects.com

- Site Appraisals
- Outline Designs
- Planning Applications
- New Build and Renovations
- Extensions
- Consultation
- Construction Works
- Residential projects
- Sports Facilities
- Commercial
- Hotels and Bars

BWP
ARCHITECTS

www.bwparchitects.com



CAROL SINGING IN PETT

~ John Taylor



As long as the road is not too icy and dangerous, we shall go Carol Singing on **Monday the 19th of December**. We shall once again meet in St. Mary & St. Peter's church, Pett Road, at 6.45pm – wearing our warmest clothes and suitable boots, carrying torches and ready to go. We shall provide the Carol Sheets and leave the church at 7pm sharp to sing our way along Pett Road, Rectory Park, the Glebe and Oakfield. Please give generously, as you always do, and you can be sure that every penny will go straight away to the local Surviving Christmas group to help some of those less fortunate than ourselves.

To complete the evening the singers will finish up at "Paxstead", where a warm welcome and some refreshments will await them. If there are any youngsters wishing to join us, and their parents cannot collect them at the end of the evening (soon after 9pm at the 'Roundels'), we shall make sure that they get home safely.

Do come and join us if you can. It is always a good evening and the more voices we have the better the sound carries. By joining in the singing or by digging deep into your pockets we will be bringing some extra Christmas cheer to some folk that have very little to celebrate at this festive season.

We look forward to seeing you at 6.45pm in the church on Monday the 19th of December, and thank you all so very much for your support.

WANTED ~ STORAGE

for a touring caravan, under cover or outdoors, with good access. Needs to be in Pett or nearby - willing to pay rent.

Caravan has its own tracker alarm system and would be fully secured and covered when not in use.

Please contact 01424 813939 or heathergodwin@lineone.net

Coffee Morning Sally Williams



Thank you to everyone who came to the coffee morning last month, it was lovely to see you all, and to the ones who could not make it ~ you were missed very much.

At our December 7th Christmas Coffee Morning (first Wednesday in the month) we will be having a **Christmas Raffle** for a Christmas Hamper, coffee, tea and, if you dare, some **MULLED WINE**!

There will of course be our wonderful homemade cakes and Phil's mouthwatering sausage rolls.

Look forward to seeing you all 10 till 12.

OFFERED

Pett Village Hall has 3 corner office desks which are no longer required.

If anyone would like one please ring Jeanette on 814717

PETT PLUMBING & HEATING

Have all your gas fired heating and cooking appliances serviced and checked by your local Corgi Registered heating engineer

Take advantage of our **LOCAL SPECIAL**

Have two appliances serviced and checked for the price of one

Other services available

- Complete heating systems designed and installed
- Under floor heating and extra radiators installed
- Landlords Gas Safety Certificates
- Power flushing of heating systems to remove sludge and cold spots
- Boiler changes and upgrades
- Unvented hot water cylinders installed and serviced
- Leaking Hot water cylinders replaced and upgraded
- Complete bathroom designed, installed and tiled
- Roof insulation and pipe/tank insulation installed
- All your plumbing problems undertaken efficiently and promptly*
- Any genuine written quotation beaten on price with this advert*
- Call Andy on
01424 813819 or 07809 573389

Andrew Goodsell, 4 Rectory Park, Pett, East Sussex TN35 4EJ

MICHAEL PENFOLD

GENERAL BUILDING
PLASTERING
MAINTENANCE
PAINTING
*References available
Reliable and Trustworthy*

36 New Winchelsea Rd, Rye, East Sussex 01797 225906 ~ 07974 306258

Your
Key
Concierge
YourKeyConcierge.co.uk

ARE YOU WORRIED ABOUT YOUR EMPTY HOUSE?



DO YOU HAVE A SECOND HOME? ARE YOU LEADING A BUSY LIFE?
RELAX with our **SECURE KEYHOLDING SERVICE** we can provide:

- Home checks,
- Emergency cover
- Second Home Management

For further details: www.yourkeyconcierge.co.uk, E-mail info@yourkeyconcierge.co.uk,
or telephone **DAVID DUNLOP** on 01424 813018/07912 686429

That Sort of Christmas ~ John Taylor
(with apologies to a friend whose idea this was)



It is that time of the year again! Thousands of turkeys are taking Valium and requesting counselling as their future dawns upon them. In the big cities tanker lorries of gin, whisky and Guinness start their mercy dash across the country. The market in Paxo Stuffing soars.

Yes! It's Christmas – Christmas Cards and Christmas Pudding. St. Michael, patron saint of underwear, is preparing his goods. In the holy temples of St. Sainsbury, St. Tesco and St. Argos the tills are ringing for me and my gal. And in the church of the latterday Virgin Megastore the spiritually uplifting sounds of special offers drift throughout the shop. **Yes!** It's Christmas – Christmas Cake and Christmas Trees. **Yes!** Now is the season to be stressed out. Panic buying of Brussel sprouts and double cream sets in. Father Christmas is reinvented for another year. It's Christmas – Christmas Crackers and Christmas Carols. Though it started in August, excitement has reached a crescendo and **now is the time!**

Throughout the United Kingdom wives go into automatic pilot to meet everyone's expectations. Husbands make themselves useful – and scarce – searching for Brussels and double cream. Hyped up children plan their midnight feasts. More mince pies roll off the assembly line.

Don't forget to tip the dustman; don't forget to defrost the turkey. Anxiety levels are rising. Yes it's Christmas – Christmas Cheer and Christmas Boxes. Panic buying spreads to satsumas and chipolatas, to peanuts and mistletoe. Jubilant husbands returning with Brussels and double cream are dispatched irritably for satsumas and chipolatas, peanuts and mistletoe. It's getting serious!

The shops are closed for a whole day! Have we got enough? Cranberry sauce shortages are reported in the Midlands. The annual guilt trip to church is added to the 'To Do' list. The tempo is rising.

Then it's Christmas Day – hooray! Christmas Stockings and Christmas Presents; children wake you up at the crack of dawn. Later, family reunions start to turn a little sour as Granny's fourth sherry marks a dangerous milestone in entente cordiale. The Queen's Speech and James Bond film mingle with the first signs of dyspepsia and disharmony and "The Sound of Music" on another channel, yet again, doesn't help. The first batteries start to run out. Is anywhere open for batteries?

Then suddenly it's over. Yes, Christmas is over – Christmas rubbish – Christmas bills – cold turkey.

The season of joy and peace has passed – and life returns to normal.
Large sigh of relief !!

Travis Electrical

Domestic electrician part P compliant covering all aspects of electrical work

Rewires

Luke Travis

New installations

07821325797

Extensions

travis.electrical@hotmail.com

Additional sockets or lighting points

www.traviselectrical.co.uk

Consumer unit upgrades

Periodic inspection

Fault finding

Free quotes

17th edition qualified

01424 773006 /



Capability Chris

Garden Design & Restoration

Chris O'Donoghue

Chelsea Medal Winner

Garden Design

Beautiful hand-coloured drawings

Comprehensive planting plans

Concise care instructions

Regular aftercare and maintenance

For free consultation please contact

Chris O'Donoghue

07887 554412 – www.chrisodonoghue.co.uk

A A Farnes
Electrical Contractor

Your local NICEIC part P

17th edition JIB

Registered electrician

Covering domestic
commercial &
industrial installations

**For all your electrical
Requirements**

No obligation quote

Please call Alan Farnes

Home: 01424 813121

Mobile: 07967794749

Email: farnsy@hotmail.co.uk

P.J. Turner

**ALL ASPECTS OF
TREE WORK
CONTRACTOR**

**MOWING – LOGGING
FENCING**

**FREE TELEPHONE
ESTIMATES 01424 812604**

DIDN'T THEY DO WELL !

Groups of children from Guestling Bradshaw Church of England School Year 5 have been busy this Autumn. Among other things they have raised money to help others less fortunate than themselves and have done well at Tag Rugby, Badminton and football. Here are three short pieces about some of their achievements. Well done !

EMILY AND FRIENDS SUPERB EFFORT FOR CHARITY



The background information is that Emily's granddad was in the ward for a month before he sadly passed away on 1st May this year. During her time visiting the ward Emily noticed that the staff were always finding ways to raise funds for the ward. Emily said that she wanted to do something in memory of her granddad but also something that would benefit other people in hospital. Emily came up with the idea of a sponsored swim and asked her friends if they could do it with her. So Imogen Ball, Isabella McLeod, Emily White and Elle Diner swam 2,000 metres at the Guestling Bradshaw School pool where they are all pupils in year 5. They raised £309 in sponsorship money.

Emily and friends handed over their sponsorship money to the Baird Ward at the Conquest. This is the photo that will be in the hospital newsletter as recognition for their superb efforts in raising so much money.

STARTASTIC ~ Isabella Macleod, Emily White and Finity Soan

On Friday 7th and 8th of October Isabella Macleod, Emily White, Finity Soan, Esme Willson, Kessiah Loft and Faraday Goobie etc. took part in a fantastic charity show for Nicole Martin, who sadly has a problem with her leg. We all worked hard to raise money. At first we had a bit of bad news because we heard that not a lot of people were buying tickets. On Friday we were all really nervous about it because we were the first people on with our gymnastics dance DON'T STOP ME NOW! The show lasted 2 hours with a 20min interval.

The next task was to produce a fairytale. Emily White was Cinderella Gaga, Isabella and Finity were the ugly sisters, Kessiah was Repunzal Beyonce and Faraday was Fairy Liquid.

Our last performance was to complete a dance which was called ROLLING IN THE DEEP! by Adele. We had a loud but peaceful band at the end and we all did the funny dance!!!!

SHUTTLE MAD ~ Imogen Ball Y5

On Sunday the 2nd October children from Guestling school played a very good badminton match at Hellenswood; they played against Silverdale. The children played two doubles and one single. A single is one against one and a double is two against two. Guestling children played really well but sadly they lost nine-five. Their coach helped them practice in their school in the hall. The children who played were Imogen Ball in Y5, Owen Page in Y5, Darrian Sobhanieh in Y5, Kessiah Loft in Y6, and Joshua Bodgery

RX fisheries
SEAFOOD AT ITS BEST

retail outlet for Adams Bros est 1897
Fishmarket Rock-a-Nore Rd
Hastings Old Town
TN34 3DW
open 7 days a week
8am until 5pm
for more information about
our range, orders and
recipes visit us at our new
website

email peter@rxfisheries.co.uk

locally caught
fish a specialty
suppliers of
all your fish and
seafood needs
freedom orders
available -
nothing too
large or small
smoked and
cured seafood
delivered daily
our polite and
helpful staff are
always on hand
to advise and
serve
most major
credit cards
accepted
open 7 days a
week 8am until
5pm

SEAFOOD RANGE
we carry more than 50 ranges each day - for
more details click onto the 'seafood range'
heading above

- ☒ fresh fish
- ☒ frozen fish
- ☒ oily fish
- ☒ ready to eat fish
- ☒ frozen fish
- ☒ smoked fish

RX fisheries

retail outlet for Adams Bros est 1897
SEAFOOD AT ITS BEST
Fishmarket Rock-a-Nore Rd
Hastings Old Town
TN34 3DW
open 7 days a week
8am until 5pm
for more information about
our range, orders and
recipes visit us at our new
website

rxfisheries.co.uk or
peter@rxfisheries.co.uk
or call 01424 445239

THE TWO SAWYERS

Tel: 01424 812255



Open 12 noon - 11pm Monday to Saturday

12 noon - 10.30pm Sunday

Food served 12 noon - 2.30pm and
6.00pm - 9.00pm Monday to Saturday
and from 12 noon - 7.30pm Sunday.

Three en-suite B&B rooms available.

This month's recipe seems more complicated than usual, but well worth it for a special celebratory meal during the festive season.

Salmon Coulibiac



For the filling

100g/3½oz long grain rice, rinsed
½ fish stock cube
1 free-range egg, beaten
200g/7oz small prawns, boiled and peeled
1 tbsp chopped fresh dill
1 tbsp chopped fresh flat leaf parsley
1 tbsp chopped fresh chives
50g/2oz mushrooms, chopped
1 lemon, zest only, plus 1 tsp lemon juice
salt and freshly ground black pepper

For the salmon coulibiac

2 blocks ready-made puff pastry
100g/3½oz baby spinach leaves
1 x 400g centre-cut salmon fillet, cut in half lengthways,
skin removed, pin bones removed
1 free-range egg, beaten, for glazing

Preheat the oven to 180C/350F/Gas 4.

For the filling, place the rice and the crumbled stock cube into a saucepan and cook the rice according to the packet instructions. Drain well and cool. Mix the cooled rice, beaten egg, cooked prawns, dill, parsley, chives, mushrooms, lemon zest and juice in a mixing bowl until well combined. Season to taste with salt and freshly ground black pepper.

To assemble the coulibiac, roll one of the blocks of puff pastry out to a rectangle 4cm/1½in bigger all round than the salmon fillets. Roll out the second block to make a rectangle 5cm/2in larger than the first one. (You may not need to use all the pastry.) Sprinkle half of the spinach leaves over the smaller sheet of puff pastry, leaving a 2cm/¾in gap around the edge of the pastry. Place one of the salmon fillets on top of the spinach leaves, then spread the filling mixture over the salmon. Place the second salmon fillet on top of the filling mixture to make a 'sandwich'. Cover the salmon with the remaining spinach leaves.

Brush the edges of the puff pastry with beaten egg and cover the salmon filling with the second, larger, sheet of puff pastry. Seal the edges of the pastry parcel together with your fingers, trimming off any excess. Carefully transfer the salmon coulibiac to a greased baking tray.

Using a knife, cut one or two small holes in the top of the salmon coulibiac, then brush all over with the remaining beaten egg. Transfer the salmon coulibiac to the oven and bake for 25-30 minutes, or until the pastry is crisp and golden-brown.

MARTINS OF HAWKHURST



Authorised
agents for

Neptune

noite
kitchen

hardy

GEFF

Miele

Hotpoint

LIEBHERR

Falcon

LACANCHE

britannia
Taste is everything

GE

FRANKE

DESIGN - INSTALLATION - SALES - SERVICE

Tel: 01580 753 470

23 Cranbrook Road
Hawkhurst, Kent, TN18 4AZ

www.martinsofhawkhurst.co.uk
mail@martinsofhawkhurst.co.uk

Chris Saint and the Flicks Team

Following last month's gloomy news that due to the small audiences we had been experiencing over the last four months, Flicks may need to close, I am pleased to report that we had one of the largest audiences of the year in November. So a BIG thank you to the 42 folks who joined the Flicks team and enjoyed our programme. Hopefully this encouraging trend will continue by everyone coming to see **Chalet Girl**, which will be our last show in 2011 on the 1st December.

We hope to get everyone into the spirit of the festive season with our seasonal film on the ski slopes. Kim (**Felicity Jones**) is a 19 year old ex-skateboarder, working in a burger bar for a living. When she stumbles into a chalet girl job, she's completely out of her depth, both on the snow - she can't even ski - and with the Madsen family, her uber-posh employers and their ultra-cool son Jonny (**Ed Westwick**). Desperate to fit in, Kim dusts off an old snowboard and takes to the slopes. Unleashing her talents, she enters the resort's pro-boarding competition. As she and Jonny grow closer and the finals draw nearer, Kim could have the world at her feet - but can she overcome the obstacles and odds to triumph? A feel-good comedy with a big heart and an even bigger supporting cast, including Tamsin Egerton, Sophia Bush, Bill Bailey, Brooke Shields and Bill Nighy.

We will not be showing a film in January but will resume again February 2012

Please do not forget, traditionally we always wish our audience a happy Christmas by serving free mulled wine and mince pies at our December show and this year will not be an exception! All are welcome to join our Society and enjoy an evening watching a film for as little as £4.50 per show with like-minded people in the local environment of Pett Village Hall. If you care to know more, please email me on chris@saintfamily.net or telephone on 813047. Alternatively, you can always pop into the Butchers shop in Pett. All films start at 7.30 pm on the first Thursday in the month with refreshments served from 7 pm.

Merry Christmas and a Happy New Year from all the Flicks team

Did anyone else spot Phil Tufnell and the BBC morning sports guy Chris Hollins, in Pett on 23rd August in a yellow 1961 Ford Zyper? Apparently they were filming an episode of Celebrity Antiques Road Trip which was shown during November.



Thanks to Colin Pope for supplying the details and pictures

DANCE / EXERCISE CLASS FOR BEGINNERS

Every Thursday 9.30 am - 11.30 am

Pett Village Hall

Simple movement to music taken by fully qualified teacher

All ages and fitness levels welcome

Do you want to:

feel fitter

burn calories

increase flexibility

increase bone density

improve muscle tone in a relaxed and fun way?

Just turn up with a pair of good trainers
on your feet and loose fitting clothes - lycra optional!

For further details contact

Mrs Robin Hutt ~ 01424 813182



An effective and practical way to access high quality, home based physiotherapy treatments

PHYSIOTHERAPY IN YOUR OWN HOME

Jessica Macdonald is a highly experienced HPC, CSP and AACCP registered physiotherapist, who will provide Physiotherapy and Acupuncture for Pain control, in your own home or workplace within the local area. Jessica is specially trained to Relieve Pain, Improve Strength, Movement, Mobility and Function and Provide Preventative Health Care Advice.

Treatments include: Pain management | Therapeutic Relaxation and Sports Massage | Acupuncture for Pain Control | Pre and post-operative treatment, and advice for Elective Orthopaedic surgery | Rehabilitation following Trauma | Mobilisation, Manipulation and Electrotherapy | Postural re-education and ergonomic advice | Personal training, Pilates and lifestyle guidance.

To discuss your needs and to book an appointment
for a home visit, please contact:

JESSICA MACDONALD
PHYSIOTHERAPIST

T: 01424 813053 M: 07795 562558
E: jessmac@gmail.com W: www.rvsphysio.co.uk



Nature Notes ~ Avril Thurley

On a recent journey to Ashford I was struck by the beauty of the roadside trees. The bright orange leaves of cherries, dark red of field maples and gold of birches shone out amongst the general browns and yellows of autumn. Although they would have been planted when the road was landscaped, they are all British natives, as are the spindles with their shocking-pink fruit and the guelder roses sporting translucent scarlet berries. All these trees, and indeed many others, make excellent garden subjects, being just as beautiful as exotics and having the added advantages of being totally hardy and attractive to wildlife. "Common" plants are usually common because they are nature's success stories; personally I would rather see a healthy thriving crab apple than a sickly struggling citrus any day.

Robins are well known for seeing off other birds who attempt to use the feeders, so I was interested to see that my robin was completely ignored by the goldfinches, in spite of his repeated sorties amongst them with raised wings and lowered head. In the end he retired to the fence and sat there 'ticking' at them angrily.

I was surprised to see a grass snake on October 30th, wriggling fast down the bank into the pond out of the way of the tractor. Proof, if proof were needed, of the exceptionally mild autumn weather.

Earlier in October while staying with my brother in Wales I saw my first ever red squirrels. I've

always wanted to see them and I was not disappointed. They are absolutely gorgeous, and really red - think robin rather than fox. Definitely my wildlife moment of the year!

Require a website?

Pett-based website
design and build
services...

...We built PettNet!

CLICK-ON-IT

01424 813922
www.click-on-it.net
media@click-on-it.net

WEBSITE DESIGN SERVICES

Pett Nats

~ Avril Thurley (Hon. Sec.)

December 16th sees the return of one of our most popular speakers, Dr Arthur Hollman, this time giving us a talk on "Plants in Medicine".

Dr Hollman not only has a huge depth of knowledge on this subject and some brilliant slides; he is also the sort of speaker who can make the filling in of tax forms sound riveting. Not to be missed. Visitors welcome at £2 each.

PARISH DIARY – December 2011

VH Village Hall – RG Recreation Ground – NBC New Beach Club

Thursday 1 st	Dance & Exercise Class	VH	9.30 - 11.30 am
	Short Mat Bowls	VH	3 pm & 7.30 pm
	Flicks	VH	7.30 pm
Friday 2 nd	Badminton	VH	10 am
	MOPPs	Fairlight VH	10.30 am
	Latin American & Ballroom Dancing	VH	2 pm
Sunday 4 th	Boathouse	VH	10.30 am
	Christmas Table Sale	NBC	11.30 am
Monday 5 th	Flowerpots Play Group	VH	9.30 am
	Quiz Night	NBC	8 pm
Tuesday 6 th	Yoga	VH	9.30 am
	POPP's	VH	10.30 am
	Pilates	VH	6 pm
	British Legion	NBC	7.30 pm
	Quiz Night	Two Sawyers	8.30 pm
Wednesday 7 th	Coffee Morning	VH	10 am
	Badminton	VH	10 am
Thursday 8 th	Dance & Exercise Class	VH	9.30 - 11.30 am
	Short Mat Bowls	VH	3 pm & 7.30 pm
Friday 9 th	Badminton	VH	10 am
	MOPPs	Fairlight VH	10.30 am
	Latin American & Ballroom Dancing	VH	2 pm
Sunday 11 th	Boathouse	VH	10.30 am
Monday 12 th	Flowerpots Play Group	VH	9.30 am
	Quiz Night	NBC	8 pm
Tuesday 13 th	Yoga	VH	9.30 am
	POPP's	VH	10.30 am
	Pilates	VH	6 pm
	Garden Club	VH	7.30 pm
	Quiz Night	Two Sawyers	8.30 pm
Wednesday 14 th	Badminton	VH	10 am
	Mobile Library	Church	10.10 – 10.40 am
		Chick Hill	10.50 – 11.10 am
		Smuggler	11.20 – 11.45 am
Thursday 15 th	Dance & Exercise Class	VH	9.30 - 11.30 am
	Short Mat Bowls	VH	3 pm & 7.30 pm
Friday 16 th	Badminton	VH	10 am
	MOPPs	Fairlight VH	10.30 am
	Latin American & Ballroom Dancing	VH	2 pm
	Women's Institute	Christmas Lunch	
	Pett Nats	VH	7.30 pm
Saturday 17 th	Carols in the Barn	Pickham Farm	6.30 pm
Monday 19 th	Flowerpots Play Group	VH	9.30 am
	Carol Singing	Meet at the Church	6.45 pm
	Quiz Night	NBC	8 pm
Tuesday 20 th	Yoga	VH	9.30 am

	POPP's	VH	10.30 am – 2.30 pm
	Pilates	VH	6 pm
	Parish Council	VH	7.30 pm
	Quiz Night	Two Sawyers	8.30 pm
Wednesday 21 st	Badminton	VH	10 am
Thursday 22 nd	Dance & Exercise Class	VH	9.30 - 11.30 am
	Short Mat Bowls	VH	3 pm & 7.30 pm
Friday 23 rd	Badminton	VH	10 am
	MOPPs	Fairlight VH	10.30 am
	Latin American & Ballroom Dancing	VH	2 pm
Monday 26 th	Flowerpots Play Group	VH	9.30 am
	Quiz Night	NBC	8 pm
Tuesday 27 th	Yoga	VH	9.30 am
	NO POPP's		
	Pilates	VH	6 pm
	Quiz Night	Two Sawyers	8.30 pm
Wednesday 28 th	Badminton	VH	10 am
	No Mobile Library		
Thursday 29 th	Dance & Exercise Class	VH	9.30 - 11.30 am
	Short Mat Bowls	VH	3 pm & 7.30 pm
Friday 30 th	Badminton	VH	10 am
	MOPPs	Fairlight VH	10.30 am
	Latin American & Ballroom Dancing	VH	2 pm
Saturday 31 st	New Years Eve		

If you want your special events or regular meetings included in the Parish Diary, please notify us ~ a programme or fixture list is fine.

pettparishnews@live.co.uk

CHURCH SERVICES:

Sun 4 th Dec	9.30am – Parish Communion, St Mary & St Peter
Sun 11 th Dec	10.45am – TOY SERVICE – Methodist Chapel
Sun 18 th Dec	8.00am – Holy Communion, St Nicholas, Pett Level
Sat 24 th Dec	3.00pm – Christingle Service, St. Mary & St Peter – ALL WELCOME
Sun 25 th Dec	9.30am – CHRISTMAS DAY Parish Communion, St Mary & St Peter
Sun 1 st Jan	10.30am – Benefice Holy Communion, St Andrews, Fairlight



JOHN COX

Quality Building Work

*Inside and out
No job too large or too small*

PLASTERING, ROOFING
CERAMIC & MARBLE TILING
DECKING, PATIOS, ETC.

Call John on:

01424 439995
07792964210

FOR A FREE ESTIMATE & ADVICE



DAVE BRETT

DO A LOT!

HOME AND GARDEN
MAINTENANCE
SERVICES

PAINTING AND DECORATING
GRASS CUTTING AND HEDGE
CUTTING

CALL DAVE for a FREE ESTIMATE
ON:

01424 435075
Mobile: 07963 110591



New PC's and peripherals
supplied and installed

Repairs and upgrades

Internet and networking

Domestic and commercial

Fast, friendly & reliable service

01424 812427

enquiries@covecomputers.co.uk



A lady who is
Passionate about gardening
Hither Green Cottage
Pett Road
Pett TN35 4HA

Ruth Attwell
Gardener

01424 813805 ~ 07988 809055

ruth-attwell4@sky.com

An honest and reliable lady gardener
who is creative & cares about gardens, will treat
your garden as her own.
All aspects of gardening, lawns, borders, weeding,
replanting, redefining of borders.

For a friendly, efficient & personal service which
offers more
than general maintenance

From simply weeding
to simply wonderful



After last month's spate of activity things have now quietened down somewhat. A lot of autumn planting has been done, and harvesting is still taking place. The plots are mainly cleared and being closed down for the long winter months, fruit cages are being built, and compost heaps being turned over. Although given the extraordinary weather we are having it could already be spring!

We thought about planting broad beans and onions for over wintering, but after last year's dreadful weather we decided to just keep to cabbages and cauliflowers, fleece at the ready in case we get hard frosts. Others are being more optimistic and have planted out a large variety of winter crops.

On the committee front, we did get our notice board which is now displaying the draft minutes from our last meeting. We post agreed minutes of previous meetings on PettNet, so that anybody who is not a plot holder has an opportunity to see what weighty issues are on our mind.

Paul has invited Kim Richards to visit the allotments. Kim, who is from the Sussex Wildlife Trust, recently gave a talk to the Gardening Club on gardening for wildlife. Hopefully she will provide us with guidelines as to how to encourage wildlife onto our plots, although we hope of the complementary kind, rather than rabbits and pigeons!

The vegetable of the month must be Brussels sprouts. They are delicious lightly steamed with a knob

of butter, or sautéed with chestnuts. Some people liken them to alien heads, and never allow the delicate, nutty flavours to infuse their palate. I find their reaction to these wonderful vegetables unfathomable.

If you would like to learn more about the allotments, or are interested in joining the waiting list for plots, then please either call or email me.

Best wishes and happy Christmas.

Pett Village Hall

Presents their forthcoming
fundraising event



SOUTH PACIFIC Sing along film night

On 14th January 2012
Come and join us for our
fun filled evening
(singing and dressing up not
compulsory, but good fun)

Chilli Jacket potato included
Tickets £6

For details contact
Jeanette or Ray on 814717
Phil at the Butchers

Pink Painters a professional finish every time

- a family business est. 2002
- * free estimates at competitive rates
- * all aspects of exterior and interior decorating undertaken

clients have told us how they value our

- | | |
|--|--|
| <input checked="" type="checkbox"/> attention to detail | <input checked="" type="checkbox"/> cleanliness and tidiness |
| <input checked="" type="checkbox"/> reliability and experience | <input checked="" type="checkbox"/> professional approach |

for more information call Collette or Jane

07712530824 0784894676 ☎ 01424 812245

Flat Roof Problems?

B. WALKER FLAT ROOFING SPECIALIST

Mastic Asphalt and Felt Roofing

35 years experience

All work guaranteed

Free Estimates at Competitive Prices

☎ 01424 812245
07802 885476

Red Briars, Pett Road, Guestling, Hastings, East Sussex, TN35 4EX



Gardening Club - November Meeting ~ Sue Dengate

We thought it would be a good idea to have someone talk to the club about 'wildlife corridors' and gardening for 'wildlife' in view of the great interest that is being shown with regard to this by our members. We were very lucky to be able to welcome Kim Richards from the Sussex Wildlife Trust who not only does work for this organisation, but has worked for the National Trust, RSPB and Great Dixter.

With this breadth of experience Kim was therefore, able to cover all the areas related to the subject from insects, birds, plants, ponds and the environment which surrounds them. Hedgerows and wild meadows are particularly important and you need seeds from the correct source to ensure integrity in the wild flower planting - not just any old packet of seeds that purports to be capable of creating a wild flower meadow. Together with her infectious enthusiasm and knowledge the evening was not only informative, but entertaining.

There were so many ideas and suggestions to take in on how to help us support the environment that we were all left buzzing with enthusiasm. She had a very clear and helpful 'slide' presentation to illustrate some of the subjects covered and a selection of really useful literature - do you know it would be quite possible for us to create a 'wildlife corridor' through the village - food for thought?

Our meeting next month is our Christmas 'Party' and we look forward to seeing all our members for this pleasant social gathering. There will be lots of good food and Mulled wine with which to wash it down - all to help us get into the Christmas spirit. Please remember to bring your Sutton Seed orders.

Don't forget 7.30 p.m. in the Village Hall on Tuesday 13th December!

The New Beach Club CHRISTMAS TABLE SALE

Sunday 4th December
11.30 am

Table set up 10.30 am
£5 per table

To book a table
ring 01424 812080

Pett Village Hall Committee

Due to a couple of classes closing we are looking for new groups to fill some regular times we have during the week in the Village Hall. For more details contact our Booking Manager Derek on 814829

Why not log onto **PettNet.co.uk** for mid month up-dates to the Parish News, local News, daily weather forecast, Pett freecycling, full Village Directory, Village Voice, club news and probably lots more too. What are you waiting for? Contact Peter on 813922 or email: peter@pettnet.co.uk

Fairlight Electrical Services

Locally based Part P &
JIB Registered Electrician
30 years experience
Small jobs welcome

For a friendly service and
a 'no obligation' quote,
please call David Stevens

☎ 01424 813269

Backed by NICEIC
Warranty and qualified to
the 17th edition IEE regs



Covering all
aspects of
electrical work,
including:

Rewires
New Installations
Outbuildings
Extensions
Lighting Design
Gate Automation
Extra Sockets
Extra Light Points
New Consumer
Units
Earth Upgrading
Smoke Alarms
Fault Finding
Periodic
Inspection
And Testing
PAT Testing
Telephone Points
Broadband Points
Garage Door •
Gate Automation

FLEAS, WASPS, BEES,
RATS, MICE,
MOLES, PIGEONS

ROTHER PEST CONTROL

R.S.H. CERTIFICATED
&
General Property Maintenance
Fencing – Brickwork
Roofing

Mr. A.D. Benn

Tel: 01797 226778
Mobile: 07739 174552

Funnell & Perring SOLICITORS

192-193 Queens Road Hastings
East Sussex TN34 1RG

EXPERIENCED ADVICE IN A
FRIENDLY CARING ATMOSPHERE

We specialise in:

Wills and Trusts	Conveyancing
Probate	Family Matters
Child Care Work	Court Work

Please contact us on
01424 426287/437081
for more information

email: law@funnellperring.co.uk

Jade's Hair Studio



Incorporating Chelsea's Beauty Studio

01424 813333

Tues, Weds & Thurs 9.00am - 5.00pm
Fri & Sat 9.00am until Last Appointment

Jade's Hair Studio, Sherwood Park
Icklesham, E. Sussex TN36 4BA
(next to Icklesham Joinery)

Free Parking

Senior Citizen prices available all week

BARBARA LLOYD-WORTH

11th June 1910 ~ 2nd November 2011

Barbara died very peacefully on Wednesday 2nd November aged 101. By the time you read this, her funeral will have taken place in the Devon village of Washfield, not far from Tiverton, and an area where Barbara's family have very lifelong connections.

Until a few years ago Barbara was a very familiar figure around and about the village, but increasingly frail health meant that she first moved to South Africa to live with her niece Gill and eventually returned to Hastings to live in The Laurels Nursing Home where she was so well looked after.

Barbara first came to Pett at the end of world war One when she and her family moved into French Court. Even as a young child she quickly became involved in the life of the village. For some years she played in the stool ball team for Pett.

During the Second World War she drove lorries for the American Army, so it did become appropriate to remember her at last month's Remembrance Day service, especially as her niece, Gill, was present.

Barbara was an avid supporter of all village events - especially the Cricket Club, where she could be found on most summer Sunday afternoons when there was a match in progress. She was, at one time, the Vice-President of the club. She delivered the Parish Magazine with enthusiasm and always made sure that everyone knew what was going on at the church.

Barbara's greatest love belonged to God and her Christian commitment meant that she was a loyal and supportive member of the Pett Church congregation. She would spend hours polishing the pews and the brass as well as tending the churchyard. For many years she took on the role of Sacristan, preparing for the services of Holy Communion.

We all like to think that we can have a claim to fame and Barbara certainly did! It was July 3rd 1931 when Amy Johnson landed her aeroplane in a field near to Pett. Barbara was given a special flight ticket and was taken on a trip over our lovely countryside and sea. Her special flight ticket is shown in John Taylor's book about Pett and is signed by Amy Johnson.

Barbara will always be remembered with love and affection especially for her lovely sense of fun and humour - and her sweet tooth - she loved her puddings!

"The time has come for my departure.
I have fought the good fight, I have finished the race.
I have kept the Faith"

2 Timothy 4, v6a - 7

God be with you Barbara: Rest In peace.

Meriel Deasy, Pett Level

Independent Financial Advice

ROCK FINANCIAL ADVISORS LLP

Investment & Pension Advice
Mortgage
& Equity Release Consultants

For a free financial review
Please call
01424 858200

Rock Financial Advisors LLP
The Innovation Centre,
Highfield Drive,
St Leonards-on-Sea TN38 9UH

Home Visits Available

P&S ELECTRICAL

Your complete electrical answer

Providing a professional, flexible, friendly
and reliable service for all of your
domestic electrical needs
No job too small

We promise to:

Provide you with a quotation within
48 hours of your call
Offer flexible working including
weekends/evenings at no extra charge
All work will be fully insured

All work completed in accordance with
17th Edition Regulations

Contact us today on

07789 040431

pandselectrical@yahoo.co.uk

The Lookout FIVE STAR BED & BREAKFAST



THE LOOKOUT

Chick Hill - Pett

Two self contained on-suite rooms
Award winning multi choice breakfast

Free WiFi & Internet

Multi channel TV

Mini Fridge

Ample secure off road parking

Enjoy breakfast on the Patio or Sun lounge taking in the superb sea view

WWW.lookoutbb.co.uk

Please visit our web site for all information & booking enquiries
or telephone any time

01424 812070

Well, it's worth giving it a try!

We all think eating fruits means just buying fruits, cutting it and just popping it into our mouths. It's not as easy as you think. It's important to know how and when to eat. What is the correct way of eating fruits? **IT MEANS NOT EATING FRUITS AFTER YOUR MEALS! FRUITS SHOULD BE EATEN ON AN EMPTY STOMACH.**

If you eat fruit like that, it will play a major role to detoxify your system, supplying you with a great deal of energy for weight loss and other life activities. Fruit is the most important food. Let's say you eat two slices of bread and then a slice of fruit. The slice of fruit is ready to go straight through the stomach into the intestines, but it is prevented from doing so. In the meantime the whole meal rots and ferments and turns to acid. The minute the fruit comes into contact with the food in the stomach and digestive juices, the entire mass of food begins to spoil....

So please eat your fruits on an empty stomach or before your meals! You have heard people complaining that every time they eat certain fruits they feel like running to the toilet, actually this will not arise if you eat the fruit on an empty stomach. The fruit mixes with the putrefying other food and produces gas and hence you will bloat!

Graying hair, balding, nervous outburst, and dark circles under the eyes, all these (allegedly) will **NOT** happen if you take fruits on an empty stomach. There is no such thing that some fruits, like oranges and lemons, are acidic, because all fruits become alkaline in our body, according to Dr. Herbert Shelton who did research on this matter. If you have mastered the correct way of eating fruits, you have the secret of beauty, longevity, health, energy, happiness and normal weight.

When you need to drink fruit juice - drink only fresh fruit juice, NOT from the cans. Don't even drink juice that has been heated up. Don't eat cooked fruits because you don't get the nutrients at all. You only get the taste. Cooking destroys all the vitamins.

But eating a whole fruit is better than drinking the juice. If you should drink the juice, drink it mouthful by mouthful slowly, because you must let it mix with your saliva before swallowing it. You can go on a 3-day fruit fast to cleanse your body. Just eat fruits and drink fruit juice throughout the 3 days and you will be surprised when your friends tell you how radiant you look!

Dont drink cold water after a meal. Can you believe this? For those who like to drink cold water, this article is applicable to you. It is nice to have a cup of cold drink after a meal. However, the cold water will solidify the oily stuff that you have just consumed. It will slow down the digestion. Once this 'sludge' reacts with the acid, it will break down and be absorbed by the intestine faster than the solid food. It will line the intestine. Very soon, this will turn into fats and lead to cancer. It is best to drink hot soup or warm water after a meal.

The Government will be giving their final decision in December as to whether they are prepared to fund the Bexhill Hastings Link Road. You may remember that the scheme had been granted provisional funding from the Department of Transport but as part of the Coalition Government's spending review last year the scheme was put on hold and subsequently placed in the 'Development Pool' of transport schemes. The Link Road is therefore just 1 of 45 schemes in the 'Development Pool' bidding for a total of £950m.

East Sussex County Council continues to take the lead in a most proactive way. To access this funding there is a competitive bid process around reducing the overall cost of the scheme and specifically the cost to the Department of Transport. The 'Best and Final' bid had to be submitted by the middle of October and ESCC prepared the bid for £57m which compared with the original bid showed a saving to the overall cost of some £6m (£92m - £86m), a saving to the DoT of £25m (£82m - £57m) and an increase in contribution by ESCC of £19m (£10m - £29m).

The primary objectives of the scheme are the economic regeneration of Bexhill and Hastings, the opening up of land for commercial and housing development and the improvement of access to and within Bexhill and Hastings, all issues that have been central to strategic plans for the area over several years. The

proposed route was also developed in close liaison with the Statutory Environmental Bodies to minimise the environmental impact of the road. So the alignment of the road, amongst other things, avoids direct impact on the SSSI's, makes full use of the existing landform to screen the route and the siting of a Greenway allowing cycles, pedestrians and horses free from direct traffic influence.

The early construction of the Link Road remains integral to the realisation of Bexhill's development potential. Upon construction this will allow, over a period of time, the development of some 52,000sq.m (560,000sq.ft) of business floor space and 1,300 new homes in Bexhill. The business land component of this strategic site will provide some 1,500 - 2,000 jobs although delivery of both homes and business units has been, and still is, prevented by the lack of highway capacity.

To put these developments in context, they represent by far and a way the largest and therefore most significant increase of job creation and housing sites in the area.

**Pett Village Hall Committee
QUIZ NIGHT**



Thank you to all who came for making this such a fun evening.
We raised £98 for the Hall Funds.
Hope to see you all in March.



CHRISTMAS 2011

**The Ship, Sea Road,
Winchelsea Beach
TN36 4LH**

01797 226767

crew@shipwinchelseabeach.com

www.shipwinchelseabeach.com

★ XMAS ★ PARTY MENU

ALL THROUGH DECEMBER

AVAILABLE IN THE RESTAURANT AT LUNCH OR DINNER
ADVANCE BOOKING RECOMMENDED
FOR FAMILY, FRIENDS, WORK OR OFFICE PARTY'S!

FIRST COURSE*

*Kentish garden pea and smoked ham hock soup with bacon snaps
Potted salmon with dark rye toast and winter salad
Butternut squash and sage risotto with Twineham Grange cheese
Game terrine with The Ship's Christmas chutney and bread of the day*

SECOND COURSE*

*Braised brisket of beef with sautéed spinach and creamed truffle potatoes
Traditional roast Turkey with sage & cranberry stuffing and all the trimmings
Poached salmon fillet with bubble 'n' squeak in a mussel and chive chowder
Savoury Christmas gâteau with rose harissa halloumi filling
All served with a medley of seasonal vegetables*

THIRD COURSE*

*Xmas Pudding with brandy butter or cream
Lemon tart and clotted cream
Chocolate fondant, drizzled in white chocolate
Cheese board with Winter chutney, bread & biscuits
Served with tea or coffee and petit fours*

**
£29
per person
payment on booking

*select one option
** Cancellations from 1st December
are non-refundable
Parties over 6 will incur
a 10% service charge



★ CHRISTMAS ★ DAY

THE FIRST CLASS MENU

Detailed menu on-line
www.shipwinchelsea.co.uk

★ ★ ★ ★ ★

SEATED IN THE RESTAURANT FOR 1PM

FIRST COURSE

Vintage Champagne and a selection of canapés

SECOND COURSE

Lightly spiced roast parsnip soup with truffle foam

THIRD COURSE

*Duck Liver Parfait - Carpaccio of Venison
Confit of Beetroot - Partridge with lentils*

FOURTH COURSE

Lobster Ravioli - Trio of Smoked Fish - Wild Mushroom Ravioli

FIFTH COURSE

Champagne and Cranberry sorbet

SIXTH COURSE

*Wild Boar and goose - Rack of Romney Marsh Lamb,
Traditional Turkey - Pumpkin & Sage Rosti - Roasted Salmon*

SEVENTH COURSE

*Mulled Wine & Poached Orange Cheesecake - Chocolate Tart
Lemon Palmier Towers - Xmas Pudding*

EIGHTH COURSE

British cheeses, glass of port

NINTH COURSE

Coffee, petit fours, mince pies
ADVANCE BOOKING IS ESSENTIAL

**
£95
per person
payment on booking

* Select one option
** Cancellations from 1st December are non-refundable



CHRISTMAS ★ FAIR ★

**SATURDAY 3RD DECEMBER
10AM-3PM**

CHILDRENS CHOIR
CHRISTMAS GROTTO
FOOD FAIR
MULLED WINE & MINCE PIES
HOT CHESTNUTS
STALLS & BOOTHS SELLING
COLLECTABLES & CRAFTS
FLOTSAM & JETSAM
PHOTOGRAPHS
ART & SCULPTURE
RETRO & SHABBY CHIC
VINTAGE INDUSTRIAL
DESIGNER JEWELLERY
CHILDRENS CLOTHES & TOYS

stalls and Booths available inside and out.
Call The Ship 01797 226767

BOXING DAY

COLD MEATS
SWEET MEATS &
TRADITIONAL FOODS

Lively Atmosphere and the strain
taken out of Feeding The Family
The Ship's Store also open ALL DAY

★ ★ ★ ★ ★

NEW YEARS EVE

DINNER AND PARTY
GET YOUR GLADS RAGS ON

See The NEW YEAR Inn at
THE (Newly Refurbished) SHIP!
Apply at The Ship for details
or check out the website

★ ★ ★ ★ ★

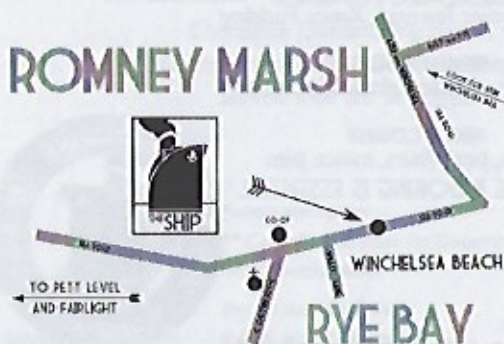
The Ship, Sea Road,
Winchelsea Beach

TN36 4LH

01797 226767

crew@shipwinchelseabeach.com
www.shipwinchelseabeach.com

ROMNEY MARSH



A sunday sell-out for Boathouse Theatre Company ~ Kim Barry

Boathouse Theatre Company, whose members are all young adults in supported education, sold-out its second performance, All You Need Is Love, at Pett Village Hall on Sunday. A cast of twenty-five took part in a musical drama, set along the shoreline of Hastings and Rye, which follows the lives of two local families from the late 1920s to the 1960s. Beginning with the tragic loss of Ivan Bowman, lifeboatman and fisherman, his ghost remains a guiding presence over the lives, loves and ambitions of the younger generations. Authentic props from the 1960s helped create an atmosphere which many people in the audience appreciated.

Kevin Barry, Chairman of Boathouse Theatre Arts, said "It was amazing, there was so much interest in this performance that we had to display 'Sold Out' signs. When we do our next show we will need to find larger premises as the following and support the performers get is tremendous.

Everybody involved with Boathouse is so proud of what its members have achieved in such a short time. We have only been going since January this year and we have managed to do two performances, a trip to the London Palladium, and soon some Boathouse members will be performing at a Children's Award Ceremony in Kent.

I would like to take this opportunity, through this magazine, to thank all the volunteers who helped on Sunday, without them it would have been difficult. I would also like to thank all the local businesses and local people who continue to encourage us to keep going and lend their support. Although Boathouse Theatre Arts has 60+ members over its three projects, we are still welcoming new members, aged from 5 years through to 26+.

For further details on how you can join please contact Kim Barry on 01424 815046 or email kimbarry@hotmail.com



photos johnknight.co.uk

The Fairlight Players Keith Miller



The Fairlight Players' November production was a slight departure from a recent run of farces. Set in the Prime Minister's study at Number 10, the plot of "Dead Ringer" revolved around the sudden death of the PM, and the efforts of senior Cabinet officials to keep the matter under wraps until after a crucial election. Although laced liberally with humour throughout, this play was at its heart a murder mystery, and one which kept the audience guessing right up to the explosive denouement.

The next Players' offering will, once again, be very different. The Murder of Maria Marten, a Victorian melodrama, is based on a true story. The story is told by a band of travelling players, and thus comes complete with songs, lavish costumes and a classic "music hall" villain.

If you would like to be involved, whether on stage or behind the scenes, please come along to the auditions which will take place on Thursday 19th January. Otherwise, please put the date of the performances (26th - 28th April) in your diary now. Great entertainment value is always guaranteed, and it's bound to beat whatever is on the box.

For more information about the Fairlight Players and forthcoming events, please visit www.fairlightplayers.org.uk or telephone 01424 814178.

Opposite is a new basic time table of the 347 and 344 bus routes. For a more detailed version contact:

eastsussex.gov.uk

Coastal Coaches - 01797 253176 www.coastalcoaches.com

Stagecoach - 08702 433711 www.stagecoachbus.com

(This information was correct at the time of going to print (July 2011) but alterations can occur)

JEMPSON'S BUS - 'Hail & Ride' to the Superstore. Every Friday calling at Allards 09:15 and Chick Hill (top) 09:20 and departs Jempson's at 11:30. Nominal charge of £1 return. There is no need to walk to the stops as the bus will stop when hailed if it is safe to do so.

M.O.P.P. - MARSHAM OLDER PEOPLES PROJECT

Meeting at Fairlight Village Hall, Broadway, every Friday at 10.30 - 3.30 pm
Lunch, transport, exercises, health information and advice, together with visits from Podiatry and other health services, visits from local Farm shop, clothing shops, and social activities.

Cost: £4.50 To include lunch and refreshments

For further information or to arrange a visit one Friday ring Sheila Thomas

co-ordinator on 01304 219767 or sheilaspan@btinternet.com

or Sylvia Gutsell 812544

MOPPs TRANSPORT - a bus will be coming through Pett each Friday to pick up outside Pett POST OFFICE around 10 am, then outside the Royal Oak at about 10.10 am. If you are unable to get to either of these pick-up points and need to be picked up from your home then please ring Sheila on 01304 219767 or Sylvia on 01424 812544

POPP - PETT OLDER PEOPLES PROJECT

CENTRE FOR OLDER RESIDENTS OF
Fairlight, Pett, Guestling, Icklesham, Three Oaks & Winchelsea

Funded by the National Lottery through the Big Lottery Fund

Every Tuesday in Pett Village Hall between 10.30am - 2.30pm

Future Calendar:

6th Dec: Thai Chi demonstration

13th Dec: Breathing and Relaxation Exercises

20th Dec: Christmas Party with Keith Osborne

Future Menu:

6th Dec: Chinese Buffet, Crème caramel/Trifle

13th Dec: Fish & Chips, spotted dick and custard

20th Dec: Christmas Dinner, Christmas pudding

3rd Jan: Roast Pork, apple crumble and custard

Come along, meet new friends and have a nice day out. For further information or to come and visit us on a Tuesday, please contact our Co-ordinator Sheila Thomas on either 01304 219767 or 07774 573086

Cost: £5.00 inclusive of lunch and refreshments

Transport can also be provided for an additional £2.50

Committee: Ann Nicholls 813043 - Sally Williams 813101 - Chrissie Penfold - 813414

347	Pett - Hastings	Monday - Friday								Saturday	
Pett (Chick Hill)	0819	0826	1002	1102	1242	1342	1442	1542		0826	1245
Pett (Church)	0822	0829	1005	1105	1245	1345	1445	1545		0829	1248
Guestling (School)	0829										
Guestling (White Hart)	0834	0834	1010	1110	1250	1350	1450	1550		0834	1253
Ore (Kings Head)	0838	0848	1014	1114	1254	1354	1454	1554		0838	1257
Ore (Christ Church)	0840	0840	1016	1116	1256	1356	1456	1556		0840	1259
West Hill (Whitefriars)			1021	1121	1301	1401	1501			1304	
Hastings (Harold Place)	0849	0849	1025	1125	1305	1405	1505			0849	1308
Hastings (Rail Station)	0851	0851	1027	1127	1307	1407	1507			0851	1310

	Hastings - Pett	Monday - Friday								Saturday	
Hastings (Rail Station)	0930	1030	1210	1310	1410	1510	1510	1735		1213	1735
Hastings (Queens Road)	0935	1035	1215	1315	1415	1515	1515	1740		1218	1740
West Hill (Whitefriars)	0940	1040	1220	1320	1420					1223	
Ore (Christ Church)	0945	1045	1225	1325	1425	1525	1525	1750		1228	1750
Ore (Kings Head)	0947	1047	1227	1327	1427	1527	1527	1752		1230	1752
Guestling (White Hart)	0951	1051	1231	1331	1431	1531	1531	1756		1234	1756
Guestling (School)							1534				
Pett (Church)	0956	1056	1236	1336	1436	1536	1542	1801		1239	1801
Pett (Chick Hill)	0959	1059	1239	1339	1439	1539	1545	1804		1242	1804

344	Bus Time-Table	Hastings - Rye														
Hastings (Stn Int'change)	0750	0850	0950	1050	1150	1250	1350	1450	1550	1650	1750	1855				
Hastings (Breeds Place)	0752	0852	0952	1052	1152	1252	1352	1452	1552	1652	1752	1857				
Ore (Christchurch)	0800	0900	1000	1100	1200	1300	1400	1500	1600	1700	1800	1905				
Fairlight Glen	0803	0903	1003	1103	1203	1303	1403	1503	1603	1703	1803	1908				
Fairlight Cove (Hotel)	0809	0909	1009	1109	1209	1309	1409	1509	1609	1709	1809	1914				
Pett Level	0815	0915	1015	1115	1215	1315	1415	1515	1615	1715	1815	1920				
Winchelsea (Smugglers)	0819	0919	1019	1119	1219	1319	1419	1519	1619	1719	1819	1924				
Winchelsea Beach	0821	0921	1021	1121	1221	1321	1421	1521	1621	1721	1821	1926				
Winchelsea (Bridge End)	0824	0924	1024	1124	1224	1324	1424	1524	1624	1724	1824	1929				
Rye (Rail Station) arrive	0830	0930	1030	1130	1230	1330	1430	1530	1630	1730	1830	1935				

Rye - Hastings

Rye (Rail Stn) depart	0703	0758	0813	0843	0928	1028	1128	1228	1328	1428	1533	1633	1733
Winchelsea (Bridge)	0709	0804	0819	0849	0934	1034	1134	1234	1334	1434	1539	1639	1739
Winchelsea Beach	0712	0807	0822	0852	0937	1037	1137	1237	1337	1437	1542	1642	1742
Winchelsea (Smuggler)	0714	0809	0824	0854	0939	1039	1139	1239	1339	1439	1544	1644	1744
Pett Level	0718	0813	0828	0858	0943	1043	1143	1243	1343	1443	1548	1648	1748
Fairlight Cove (Hotel)	0724	0819	0834	0904	0949	1049	1149	1249	1349	1449	1554	1654	1754
Fairlight Glen	0730	0825	0840	0910	0955	1055	1155	1255	1355	1455	1600	1700	1800
Ore (Post Office)	0733	0843	0843	0913	0958	1058	1158	1258	1358	1458	1603	1703	1803
Hastings (Harold Place)	0741	0851	0851	0921	1006	1106	1206	1306	1406	1506	1611	1711	1811
(Rail Stn Interchange)	0743	0853	0853	0923	1008	1108	1208	1308	1408	1508	1613	1713	1813



B K Joinery

Bespoke Joinery & Cabinet Makers
Replacement non standard
Doors, Windows and Sashes

Bookcases, Cabinets, Bedroom Furniture
Individual Kitchen Units
Built-in or freestanding

Brian Patterson ☎ 01424 814670



PODIATRY & CHIROPODY CLINIC

(formerly called The Chiropody Clinic)

63a CINQUE PORTS STREET, RYE

TEL: 01797 224472

NOW OPEN EVERY WEEK DAY for treatments of foot pathologies

Each Chiropodist and Podiatrist is fully qualified
and registered with the Health Professions Council

HOME VISITS AVAILABLE TO THE HOUSEBOUND

PARKING NEARBY



A MAN THAT CAN ...

I CAN TACKLE ANY ODD JOBS AROUND THE HOME OR GARDEN
THAT YOU MAY BE UNABLE TO DO YOURSELF ANYTHING FROM A
SQUEAKY HINGE TO PUTTING UP SHELVES TO ASSEMBLING FLAT-PACK
FURNITURE OR A GARDEN SHED

I AM MATURE, HONEST, RELIABLE
AND HAVE BEEN CRB CHECKED

REFERENCES AVAILABLE

CALL FOR A FREE ESTIMATE ~ NO JOB TOO SMALL

CHRIS SHERWIN, PETT VILLAGE

TEL: 01424 813825 MOBILE 07875 109215

VILLAGE HALL COMMITTEE

The Village Hall is available for private hire - rates on request

Name	Telephone No ~ Email	Responsibility
Phil Batten	812148	Chairman
Ray Barden	812661 ray.barden@btopenworld.com	Vice Chairman
Jeanette Barden	812661 jeanettebarden@btopenworld.com	Secretary
Carol Pecconi	813544	Treasurer
Deek Johnson	814826	Hall Manager & Hall Bookings
Evelyn Darnell	812616	Committee Member
Tim Jery	813639	Committee Member
Philippa Strickland	814364 petrill@worldnet.com	Committee Member
Sally Williams	813101	Committee Member

CONTACT DETAILS FOR VARIOUS ACTIVITIES IN THE VILLAGE

Activity/Society/Club etc	Contact Name	Telephone Number ~ Email
Allotment Chair	Mike Wilkins	813206 mikewilkins53@hotmail.com
Badminton Club	Cathy Norris	812129 csnorri@hotmail.co.uk
British Legion	Brian Green	812450 toffee35@gotadsl.co.uk
Bowls Club	Barry Quaife	432887 barry.quaife@virgin.net
Cricket Club	Andrew Dunlop	813368
Dance & Exercise Class	Robin Hull	813182 robinhull@btinternet.com
Flicks Film Society	Chris Saint	813047 csale@saintfamily.net
Flower Show Chair	Diane Crouch	813177
Flowerpots Toddler Group	Kate Woodbridge	pettflowerpots@hotmail.co.uk
Friends of Pett Lever Preservation Trust	Rosemary Moon	812246
Gardening Club	Pauline Barker	812872
Latin American & Ballroom Dancing	Mr & Mrs Hall	813355
MOPPs & POPPs	Sheila Thomas	81304 219367 sheilaopen@btinternet.com
Naturalist Society	John Taylor	814674 jact@talktalk.net
P.N Distribution co-ordinator	Brenda Kirkham	815022
Pett on the Net	Peter Wiggins	813622 peter@pettnet.co.uk
Pilates	Gaby Valenti	442364
Short Mat Bowls	Linda Jaconelli	431814 linda.jaconelli@btinternet.com
Tennis Club	Dennis Langer	812436 lannerdex@btinternet.com
Women's Institute	Joyce Elliott	813005
Yoga	Victoria Eileen	81787 225667

If we have not included your Club/Society etc, please let us know together with contact
name, telephone number and email address

pettparishnews@live.co.uk

PETT PARISH COUNCIL – 2011/2012

Councillors	Address	Telephone No:
Cllr. Andrew Dunlop (Chair)	1 Lunsford Farm Cottage, Pett	813368
Cllr. Dr Jillian Green (Vice Chair)	'October', Pett Road, Pett	813041
Cllr. Martin King	1 New Coastguard Cottages, Toot Rock, Pett Level	814078
	Email: martin@tootrock.demon.co.uk	
Cllr. Paul Stapley	Bower Cottage, Pett Road, Pett	814202
	Email: paul.stapley@virgin.net	
Cllr. David Richards	Ambleside, Pett Road, Pett	815224
	Email: richards.davidj@yahoo.co.uk	
Cllr. Judith Dean	Delvings, Chick Hill, Pett	812249
	Email: jmd_delvings@live.com	
Cllr. Mark Hall	The Water House, Pett Road	812781
	Email: markhall.pett@gmail.com	
Clerk	Jane Buller, 24 Friars Way, Hastings	437003
	Email: jane-b0@talktalk.net	

RESPONSIBILITIES

Pett Village Hall Management Committee	Cllr. Jillian Green
Pett Sports Association	Cllr. Martin King and Paul Stapley
Police Community Consultative Group	Cllr. Mark Hall
Rother Association of Local Councils Representative	Cllrs. Paul Stapley and David Richards
Sussex Association of Local Councils	Cllrs. Andrew Dunlop, Martin King
Flood Wardens	Cllrs. Andrew Dunlop, Co-opted members District Cllr. Robin Patten, Brian Roberts
	Cllr. David Richards

MOPP's & POPP's

Non-emergency Police number	0845 607 0999
PCSO Sharon Eldridge	07810 630092
(Only answered when PCSO is on duty – otherwise any message left will be dealt with and monitored by local station and action taken if required or left for Sharon on her return to duty)	
Please note that if you witness a crime in progress, you should immediately ring 999	

Rother District Council (Marsham Ward)

Cllr. Roger Bird	87 Battery Hill, Fairlight, Hastings, TN35 4AL	01424 813636
	Email: cllr.roger.bird@rother.gov.uk	
Cllr. Robin Patten	5 Old Coastguard Cottages, Pett Level Road, Pett Level, TN35 4EH	01424 812479
	Email: cllr.robin.patten@rother.gov.uk	

East Sussex County Council

Cllr. Carl Maynard	The Burrow, 23 Baldslow Down, Westfield TN37 7NJ	01273 481576
	Email: cllr.carl.maynard@eastsussex.gov.uk	