

November, 2011

PARISH NEWS

Pett Level

**NOVEMBER HIGH TIDES
AT RYE HARBOUR APPROACHES**

Date	Day	Time (hrs)	Height (m)	Time (hrs)	Height (m)
1	Tuesday	0213	3.4	1442	3.1
2	Wednesday	0308	3.0	1540	2.6
3	Thursday	0406	2.6	1646	2.2
4	Friday	0511	2.4	1811	2.1
5	Saturday	0631	2.4	1938	2.2
6	Sunday	0747	2.6	2033	2.6
7	Monday	0840	2.8	2116	2.8
8	Tuesday	0924	3.1	2153	3.1
9	Wednesday	1003	3.3	2225	3.2
10	Thursday	1038	3.3	2258	3.3
11	Friday	1109	3.3	2328	3.4
12	Saturday	1138	3.3	2356	3.4
13	Sunday	-	-	1205	3.3
14	Monday	0021	3.4	1232	3.2
15	Tuesday	0050	3.3	1304	3.2
16	Wednesday	0126	3.2	1342	3.0
17	Thursday	0209	3.0	1429	2.7
18	Friday	0304	2.7	1533	2.5
19	Saturday	0417	2.5	1706	2.4
20	Sunday	0536	2.6	1827	2.5
21	Monday	0651	2.8	1931	2.8
22	Tuesday	0752	3.2	2026	3.2
23	Wednesday	0847	3.6	2117	3.4
24	Thursday	0939	3.8	2207	3.7
25	Friday	1029	3.9	2256	3.9
26	Saturday	1119	4.0	2342	3.9
27	Sunday	-	-	1206	3.9
28	Monday	0028	3.9	1251	3.7
29	Tuesday	0112	3.8	1337	3.4
30	Wednesday	0158	3.6	1425	3.1

pettparishnews@live.co.uk

BUSINESS ADVERTISING RATES

Annual Whole Page: £180.00 ~ Annual Half Page: £90.00
Annual Third Page: £60.00 ~ Annual Quarter Page: £45.00

Additional £6.00 per annum for inclusion on the PettNet web site

Contents

Allotment News	9
Bus timetable	41
Church News	21
Church Services	19
Club Contacts	43
Coffee Mornings	29
Diary	22
District Council	39
Do you know?	19
Flicks	10
Gardening Club	32
Jumble Sale	21
Letters	34
MOPP's	40
Nature Notes	13
Parish Councillors	44
Parish Office	6
Pett Nats	13
POPP's	40
Recipe	27
Useful Numbers	42
Village Hall Committee	43
What's on?	35
W.I.	25
Wildlife Trust	28

Hello,

and welcome to the penultimate edition of Pett Parish News in 2011!

In October, the Two Sawyers celebrated their 3rd anniversary of re-opening – congratulations! How lucky we are to have four excellent establishments in the vicinity. We saw the newly re-furnished Royal Oak open in June, and continue to support The New Beach Club and The Smuggler – in these current economic times there cannot be many Parishes who can boast such a choice!

This month I would like to draw your attention to an article on the potential closure of **Flicks**. Chris and team are now in their 10th year, and have shown more than a 100 films in that time.

The Allotment Association now have an active page in PettNet, where recent photographs of their 1st anniversary BBQ can be seen, in addition to useful information and tips offered by members.

You will also see the results of the Pett Exception Site Project survey. A decision about the future of the project will be made by the council at their meeting on **Tuesday 15th November** (deadline

day for copy to be submitted for the December issue of PPN!)

When you read this newsletter it will be less than nine weeks to Christmas. Please send any copy for the December issue ASAP, so that Jackie can have a stress free time in the run up to the festive season.

Sarah

(Associate Editor)

Copy for the **DECEMBER** edition can be sent to us by email on

pettparishnews@live.co.uk

or delivered to Jackie Richards at Ambleside (815224), or Sarah Adams at Seawinds (812323), both on Pett Road. **The deadline for copy is MID-DAY the 15th November** and anything you can get to us before that date is greatly appreciated. Any copy after this time will be entered in the following month's issue

Whilst every effort has been made to ensure the accuracy of the information supplied herein, the editor cannot be held responsible for any errors or omissions. Unless otherwise indicated, opinions expressed herein are those of the authors of the individual articles and adverts, and they do not necessarily represent the views of the editor, nor can the editor uphold or recommend any advertiser here within this publication. E&OE

RX fisheries
SEAFOOD AT ITS BEST

Established, Rock-a-Nore Road, Hastings Old Town, TN34 3DW.
Tel: 01424 445239

HOME HISTORY HOW TO ORDER SEAFOOD RANGE FISH RECIPES

SEAFOOD RANGE
We carry more than 50 ranges each day - for more details visit our 'seafood range' website.

- fresh fish
- frozen fish
- city fish
- ready to eat fish
- frozen fish
- smoked fish

email: peter@rxfisheries.co.uk

Locally caught fish a speciality
Supplying all your fish and seafood needs
Freezer orders available - nothing too large or small
Smoked and exotic seafood delivered daily
Our polite and helpful staff are always on hand to advise and serve
Most major credit cards accepted
Open 7 days a week 8am until 5pm

RX fisheries

retail outlet for Adams Bros est 1897
SEAFOOD AT ITS BEST
Fishmarket Rock-a-Nore Rd
Hastings Old Town
TN34 3DW
open 7 days a week
8am until 5pm
for more information about
our range, orders and
recipes visit us at our **new website**

rxfisheries.co.uk or
peter@rxfisheries.co.uk
or call 01424 445239

THE TWO SAWYERS

Tel: 01424 812255



Open 12 noon - 11pm Monday to Saturday

12 noon - 10.30pm Sunday

Food served 12 noon - 2.30pm and
6.00pm - 9.00pm Monday to Saturday
and from 12 noon - 7.30pm Sunday.

Three en-suite B&B rooms available.



TWO SAWYERS Pre - Christmas Menu

Starters

Winter Vegetable Soup

Deep Fried wedge of Brie

With Cumberland sauce

Smoked Salmon, Prawn and Chive crème Fraîche timbale

Home-made Chicken liver and brandy Pate

With Melba Toast

Deep Fried breaded Whitebait

With Tartare Sauce

Mains

Roasted Turkey

With all the trimmings

Steak & Kidney Pudding

Fresh grilled fillet of Salmon

With a prawn & parsley cream sauce

Confit of Duck leg

On leek mash with a honey & mustard Jus

Baked vegetable moussaka

With a mixed salad

Sweets

Christmas Pudding & Brandy butter

With Cream

Traditional Sherry Trifle

Meringues filled with cream, Morello cherries

Topped with crème de cassis coulis

Apple & Blackberry crumble with custard

Chocolate & Rum Mousse

Followed by Coffee and Mince pies

£18.95

Pre-Orders essential for parties of 8 or more
Any special requirements catered for with prior notice

From the Parish Office ~ Bob Hodgson, Parish Clerk

Pett Exception Site Project: Proposed Affordable Housing Scheme

The Parish Council at their meeting on 15th November will consider the results of the recent Village Survey together with previously submitted comments including representations made at the public meetings and in addition any comments submitted to the Council by letter. The decision of the Council will be published on the Parish Notice Boards, the Pett Net website and in the next available issue of the Parish News (copy deadline permitting).

PLEASE NOTE: Results of the survey appear at the end of this article

The Queen's Diamond Jubilee In June 2012

At the September Council meeting details were given of a communication from Marion Shepherd who is Chairman of Horam Parish Council and a Deputy Lieutenant for East Sussex. She has been asked by the Lord Lieutenant Mr. Peter Field to head up 'the Big Lunch' to mark her Majesty's Diamond Jubilee. For further details of the event please visit www.thebiglunch.com/ where there are various ideas for getting together and celebrating this momentous occasion.

Rother District Council have set aside a special fund of £20,000 for events associated with the Diamond Jubilee and details can be obtained direct from Rother but applications are likely to be dealt with on a 'first come' basis so do not delay if you wish to plan an event. The Parish Council would be pleased to hear of any events being planned.

Grants to Local Village Organisations

The Parish Council will begin the process of budget planning at their November meeting in preparation for setting the Precept for 2012/13.

The Parish Council has in previous years given grants to local organisations and for local community projects but it is necessary to plan for these grants as the Council does not hold sufficient reserves for allocating grants during the financial year.

If you wish to be considered for a grant, or are planning a project in 2012/13 please provide details to the Parish Clerk as soon as possible. This will apply to organisations who have previously received a grant from the Council.

The information should give a brief outline of the Project or why your organisation requires a grant and a copy of the

organisations latest accounts should also be submitted. If you wish to discuss your project or grant request before making an application please contact the Parish Clerk.

Pett Parish Council Accounts - Annual Internal Audit

The Parish Council is required to have the Annual Accounts audited by an independent person at least once in each financial year prior to the submission of the Annual Return to the Audit Commission appointed external auditor.

The person undertaking the internal audit is not required to be a 'qualified accountant/auditor' but someone who is considered to be financially competent to examine the Council's financial records in accordance with the Council's Standing Orders and Financial Regulations and statutory guidance. The Parish Council has been very fortunate in the past in having a local resident undertake this task on a voluntary basis. If you feel you would be able to assist the Council with the audit, or wish to discuss the matter in further detail, please contact the parish clerk. The internal audit is normally undertaken in May each year.



PETT EXCEPTION SITE PROJECT

~ Bob Hodgson, Parish Clerk Proposed Affordable Housing Development

The Village Survey Response forms have now been counted and analysed and the result is as follows:-

The total number of Survey forms issued was 454.

The total number of Survey forms returned and validated was 208.

The turnout was therefore 45.81%

The total number of votes cast was 383.

The votes for the Pett Parish Council to **support** the proposed development were 141-36.81% and the votes for Pett Parish Council to **oppose** the proposed development were 242-63.19%. The detailed Report on the Survey findings, including the additional comments submitted will be made to the **Pett Parish Council meeting on 15th November** when the Council will be asked to make a decision about the future of the Project.

The Parish Council wishes to thank all those who responded to the Village Survey, the collection box locations (The Post Office, The Butchers, The Pett Village Hall, The Two Sawyers, The Royal Oak and The Smugglers) for their co-operation and the Distributors, Counters and Scrutineers.

October 2011

Pink Painters a professional finish every time

- * a family business est. 2002
- * free estimates at competitive rates
- * all aspects of exterior and interior decorating undertaken

clients have told us how they value our

- | | |
|--|--|
| <input checked="" type="checkbox"/> attention to detail | <input checked="" type="checkbox"/> cleanliness and tidiness |
| <input checked="" type="checkbox"/> reliability and experience | <input checked="" type="checkbox"/> professional approach |

for more information call Collette or Jane
07712530824 0784894676 01424 812245

Flat Roof Problems?



B. WALKER FLAT ROOFING SPECIALIST

Mastic Asphalt and Felt Roofing

35 years experience

All work guaranteed

Free Estimates at Competitive Prices

01424 812245

07802 885476

Red Briars, Pett Road, Guestling, Hastings, East Sussex, TN35 4EX

Allotment News ~ Mike Wilkins, Chair

We recently held a celebration barbecue to mark the first anniversary of opening up the allotment site to plot holders, with about thirty plot holders, family and friends attending. I would like to thank everybody who made this barbecue happen.



What is remarkable is how far we have come, from a ploughed field last year to a fully productive allotment site this year. The people who are to be congratulated for this achievement are the plot holders themselves, who overcame the unusually early heat wave and near drought to grow crops that were of high quality and abundance.

The proficiency of plot holders ranges from experienced horticulturalists to first timers. Everybody has been willing to share their knowledge and ideas to help others, and we have been looking at ways on which we can capture this not only for the plot holders but also for the village. Because PettNet can be such a valuable resource for this kind of activity we are starting to use it as a sharing place for vegetable growing and recipes hints and tips.

This will take some time to build up, but is open to all to contribute, especially from those of you who can share experience of local growing conditions. If you do wish to share your experience, and perhaps recipes for vegetable dishes, then you can either post your contributions on the allotment forum, or send them to me.

Communications amongst plot holders, especially of association business such as committee agendas and minutes, can be troublesome as most people tend their plots on different days and times from others. We do use email as much as we can, but are aware that some people prefer other means of communication. Thanks to Mac and George, we are in the process of installing a small refurbished notice board at the allotment gate (it may already be in place when this is published). Hopefully this will go some way to help improve communications.

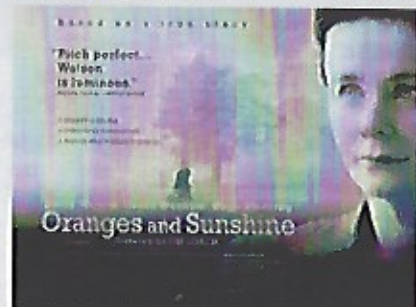
Even though many crops this year were one month ahead of where they would normally be, there is still harvesting taking place, especially of root crops and some brassicas. The greatest focus over the coming weeks, however, is starting to prepare for next year. Clearing, rotovating and the never ending search for well-rotted manure (and endless discussions as to whether cow or horse is better). All contributions gratefully received!

If you would like to learn more about the allotments, or are interested in joining the waiting list for plots, then please either call or email me.

Potential closure of FLICKS IN THE VILLAGE

Last month we saw the start of our tenth year of the Flicks in the Village and over the past nine years, we have shown more than 100 films and entertained over 4500 members and guests. When we originally created Flicks our two aims were to provide an amenity for the village and to raise valuable revenue to support the running costs of Pett Village Hall. Up to six months ago we were achieving these with a healthy balance in the bank. Sadly we now have to report that we have been making a loss on every show over the last six months as a result of a 50% reduction in audience numbers. There are a number of factors that may have contributed to this reduction, e.g. insufficient good films available that appeal to our audience, bigger and better home cinema systems, and of course, the general economic situation. In addition, while many people support the idea of such an amenity in the village, such support is not always translated into a visit to Flicks on the first Thursday of the month! Whatever the reason may be, we have decided that unless audience numbers return to at least an average of 40 we must close our doors with our last show being March 2012.

However, in an effort to head off the need to close we will be screening on the 3rd November the film **Oranges and Sunshine**.



This production stars **Emily Watson, David Wenham** and **Hugo Weaving**. **Oranges and Sunshine** tells the story of Margaret Humphreys, a social worker from Nottingham who uncovered one of the most significant social scandals of recent times: the deportation of thousands of children from the United Kingdom to Australia.

Almost single-handedly, against overwhelming odds and with little regard for her own well-being, Margaret reunited thousands of families, brought authorities to account and drew worldwide attention to an extraordinary miscarriage of justice. Children as young as four had been told that their parents were dead, and been sent to children's homes on the other side of the world. Many were subjected

to appalling abuse. They were promised oranges and sunshine: they got hard labour and life in institutions.

Our last show in 2011 on the 1st December will be **Chalet Girl** which will we hope get us into the spirit of the festive season on the ski slopes. Kim (**Felicity Jones**) is a 19 year old ex-skateboarder, working in a burger bar for a living. When she stumbles into a chalet girl job, she's completely out of her depth, both on the snow - she can't even ski - and with the Madsen family, her uber-posh employers and their ultra-cool son Jonny (**Ed Westwick**). Desperate to fit in, Kim dusts off an old snowboard and takes to the slopes. Unleashing her talents, she enters the resort's pro-boarding competition. As she and Jonny grow closer and the finals draw nearer, Kim could have the world at her feet - but can she overcome the obstacles and odds to triumph? A feel-good comedy, with a big heart and an even bigger supporting cast, including Tamsin Egerton, Sophia Bush, Bill Bailey, Brooke Shields and Bill Nighy.



Please do not forget, all are welcome to join our Society and enjoy an evening watching a film for as little as £4.50 per show with like-minded people in the local environment of Pett Village Hall. If you care to know more, please email me on chris@saintfamily.net or telephone on 813047. Alternatively, you can always pop into the Butchers shop in Pett. All films start at 7.30 pm on the first Thursday in the month with refreshments served from 7.00 pm.

Chris Saint and the Flicks Team

Pett is on the net – visit the village website **PettNet.co.uk**

If you would like to add to the site, please contact Peter Wiggins on 813922 or email peter@pettnet.co.uk

Fairlight Electrical Services

Locally based Part P &
JIB Registered Electrician
30 years experience
Small jobs welcome

For a friendly service and
a 'no obligation' quote,
please call David Stevens

☎ 01424 813269

Backed by NICEIC
Warranty and qualified to
the 17th edition IEE regs



Covering all
aspects of
electrical work,
including:

Rewires
New Installations
Outbuildings
Extensions
Lighting Design
Gate Automation
Extra Sockets
Extra Light Points
New Consumer
Units
Earth Upgrading
Smoke Alarms
Fault Finding
Periodic
Inspection
And Testing
PAT Testing
Telephone Points
Broadband Points
Garage Door +
Gate Automation

FLEAS, WASPS, BEES,
RATS, MICE,
MOLES, PIGEONS

ROTHER PEST CONTROL

R.S.H. CERTIFICATED
&
General Property Maintenance
Fencing - Brickwork
Roofing

Mr. A.D. Benn

Tel: 01797 226778
Mobile: 07739 174552

Funnell & Perring SOLICITORS

192-193 Queens Road Hastings
East Sussex TN34 1RG

EXPERIENCED ADVICE IN A
FRIENDLY CARING ATMOSPHERE

We specialise in:

Wills and Trusts	Conveyancing
Probate	Family Matters
Child Care Work	Court Work

Please contact us on
01424 426287/437081
for more information

email: law@funnellperring.co.uk

Jade's Hair Studio



Incorporating Chelsea's Beauty Studio

01424 813333

Tues, Weds & Thurs 9.00am - 5.00pm
Fri & Sat 9.00am until Last Appointment

Jade's Hair Studio, Sherwood Park
Icklesham, E. Sussex TN36 4BA
(next to Icklesham Joinery)

Free Parking

Senior Citizen prices available all week

Nature Notes ~ Avril Thurley

Just before a sharp bend in Pannel Lane I saw a young squirrel come down the bank and run across the road, hotly pursued by a cat. The cat was within striking distance, and I wouldn't have given a fig for the squirrel's chances. Then a car came round the bend and hit the cat; the squirrel escaped up the opposite bank and the cat was dying in the road. All this happened much quicker than it takes to tell, and left me musing on the extraordinary twists of fate and reversals of fortune. I have read that foxes, when chased by hounds, will lead them across railway lines. Who knows how intelligent squirrels are? Perhaps they have learnt from experience to lead predators across roads.



A few days later I had another encounter with a dead animal, this time in Elms Lane in the road alongside the little orchard. The victim was a shrew, but not a common shrew. This was a water shrew, black on top, white underneath, and much bigger than the common shrew. There were no signs of injury on it. Most predators leave shrews alone, presumably because they taste unpleasant. They are very fierce little creatures. My Samoyed, Anna, once found a shrew in the churchyard, and it sat

up on its hind legs and offered to sort her out. Anna, who was a great killer of small rodents, left the shrew alone. (Shrews are not rodents, but to a dog I expect they look much the same.)

Now is a good time to clean out your nest boxes and give them a wash with boiling water to kill off any nasties. Leave the lid open until the box is dry, then if you like you can put in a handful of hay or pet combings. Many birds will use nest boxes for roosting in the winter, as also will field mice.

Finally, a seasonal reminder - if you are having a bonfire on November 5th, do make sure there are no hedgehogs or other creatures under the heap before you light it.

Pett Nats ~ Avril Thurley (Hon. Secretary)

Our talk on November 18th is by Bryan Purdy, and is the one titled 'Hastings First Theatre' which he was due to give last December when we were obliged to cancel the meeting because of heavy snow. This is our annual history (as opposed to natural history) evening, and all local historians are welcome to come along and join us. Visitors are £2 each.



NEW BEACH CLUB

Pett Level Road, Pett Level, East Sussex TN35 4EH
01424 812080

Saturday 29th October ~ Talent – Disco - Karaoke evening
All with a Halloween Theme
All are welcome

Every Monday 8 pm ~ Quiz night
First Tuesday Monthly 7.30 pm ~ British Legion meet

Take Away Menu now available to eat at home or on the beach

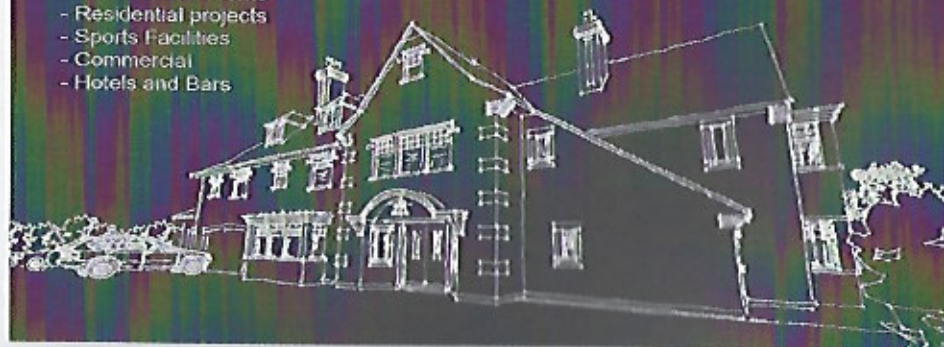
Cafe opening times: Mon 12 – 2.30
Wed, Thurs & Fri 12 – 2.30 & 6 – 8.30
Sat 12 – 3 & 6 – 8.30 Sun 12 – 4

Meeting room available for local organisations
(Subject to availability)

Contact - Stuart Ware
t: 01424 813332
e: studio2@bwparchitects.com

- Site Appraisals
- Outline Designs
- Planning Applications
- New Build and Renovations
- Extensions
- Consultation
- Construction Works
- Residential projects
- Sports Facilities
- Commercial
- Hotels and Bars

BWP
ARCHITECTS
www.bwparchitects.com



NEW BEACH CLUB HARVEST HOME AUCTION



Dear All,

This is just a quick report on the 2011 Beach Club Harvest Home Auction.

It was the 60th year of this event and we were rather hoping it would produce something special, and against all the odds with the recession etc it came up trumps.

With all the money now being accounted for, the final total was £2107.

May I take this opportunity on behalf of the organisers, to thank everyone involved:-

- The Collectors
- The accounts staff
- Galvanised Design, printers of the flyers
- Andy Hemsley Hastings Observer
- The numerous Auctioneers
- Rye Lifeboat and Hastings Lifeboat
- The New Beach Club who have had to put up with us arranging this event for sixty years
- And of course the people of Pett and Pett Level and surrounding areas who so generously donated the items for us to auction.

The final group I would like to thank are the people who come down year after year to support this event and bid for the countless number of lots that are auctioned. Without these people we could not keep this event going.

Moving on, discussions have taken place and the cheque presentation night will be at The New Beach Club at 1930hrs on Friday the 24th February 2012.

All the very best,

Steve Harris

Our sole aim at Moorhurst is to put the customer first. Carpets and vinyls supplied direct from wholesaler to you, no middleman or pushy salesman on commission. No vastly inflated accessory prices to cover 'gimmick' carpet prices.

We aim to provide an old fashioned service in bringing as little disruption as possible to you and your family.

And remember with Moorhurst Carpets the customer really does always come first along with a total dedication to providing you with an honest, reliable and friendly service from start to finish.

If you require any further help, information or just an informal chat about selecting your new floor coverings in the comfort of your own home, please contact us. Payments by debit/credit cards accepted.

MOORHURST CARPETS

CARPET & VINYL HOME SELECTION SERVICE

Unit 13, Conqueror Industrial Estate,
Moorhurst Road, Hastings,
East Sussex, TN38 9NB

Tel: 01424 552615 Mobile: 07742 970 882
Email: mark.hanks@moorhurstcarpets.co.uk

Or check out our site on

www.moorhurstcarpets.co.uk

The Royal Oak – Now Open

Serving Home Cooked Food, Real Ales and Selected Wines

Our Current Opening Hours

Bar

11am - 11pm
Monday - Saturday
12noon - 10.30pm
Sunday



Food Served

12noon - 2.30pm,
6 - 9.30pm
Monday - Saturday
12 noon - 5pm Sunday

Telephone: 01424 812515 for reservations / enquiries

Web: royaloakpett.com

The Royal Oak Pett Pre Christmas Menu 2011

Home Made White Onion & Cider Soup & Warmed Baguette

Seared Wood Pigeon Breasts with Redcurrant & Balsamic Reduction

Wrap of Parma Ham, Grilled Goat Cheese & Toasted Walnut with Sherry Vinegar Dressing

Grilled Halloumi Cheese on an Olive, Caper & Cherry Tomato Salad

Smoked Salmon & Prawn Roulade with Caper & Dill Mayonnaise

Roast Turkey, with Local Chipolata Sausages wrapped in Bacon, Chestnut Stuffing ,
served with Roast Potatoes, Fresh Vegetables and all the Trimmings.

Roast Duck Breast with a Cumberland Sauce,
served with Creamed Potatoes & Fresh Vegetables

Oven Baked Loin of Cod with a Mussel & Tomato Vinaigrette,
served with Saute Potatoes & Fresh Vegetables

Potato, Goat Cheese & Wild Mushroom Lasagne, served with Salad & Garlic Bread

Roast 8-10oz Rump of Lamb, with Cranberry & Port Sauce
served with Potato & Leek Cake & Fresh Vegetables

Christmas Pudding with Brandy Anglaise

Bitter Chocolate Tart with Prune & Armagnac Ice Cream

Lemon Syllabub with Ginger Shortbread

Pear Poached in Red Wine with Cinnamon Ice Cream

Choice of Ice Creams

Plate of Local / English Cheeses

Fresh Filter Coffee & Mints

All 3 Courses - £22.95

Any Two Courses £17.95

No Service Charge

Available by reservation only from December 8th to 21st

A Deposit of £7.95 will be required to secure all bookings. All major credit/debit cards accepted.

The Royal Oak Pett 01424 812515 royaloakpett.com

Independent Financial Advice

ROCK FINANCIAL ADVISORS LLP

Investment & Pension Advice
Mortgage
& Equity Release Consultants

For a free financial review
Please call

01424 858200

Rock Financial Advisors LLP
The Innovation Centre,
Highfield Drive,
St Leonards-on-Sea TN38 9UH

Home Visits Available

P&S ELECTRICAL

Your complete electrical answer

Providing a professional, flexible, friendly
and reliable service for all of your
domestic electrical needs
No job too small

We promise to:

Provide you with a quotation within
48 hours of your call
Offer flexible working including
weekends/evenings at no extra charge
All work will be fully insured

All work completed in accordance with
17th Edition Regulations

Contact us today on

07789 040431

pandselectrical@yahoo.co.uk

The Lookout FIVE STAR BED & BREAKFAST



THE LOOKOUT

Chick Hill - Pett

Two self contained on-suite rooms
Award winning multi choice breakfast

Free WiFi & Internet

Multi channel TV

Mini Fridge

Ample secure off road parking

Enjoy breakfast on the Patio or Sun lounge taking in the superb sea view

WWW.lookoutbb.co.uk

Please visit our web site for all information & booking enquiries
or telephone any time

01424 812070



Do You Know? ~ John Taylor

Do you know about Fairlight and Holman Hunt?

When Christina Rossetti lived in Hastings her Pre-Raphaelite friends often came to visit her. One of these was Holman Hunt (painter of the famous picture "The Light of the World"). Hunt loved the hills at Fairlight and produced another of his spectacular paintings near Fairlight Glen. He came to the area several times with his friends Edward Lear and John Everett Millais and it was while he was with Lear most of the painting entitled "The Strayed Sheep" was completed. Edward Lear was troubled about painting from his pencil sketches and Hunt helped him to deal with the difficulty of painting rocks.

Holman Hunt (1827 - 1910) and Edward Lear came down to Hastings in 1852 and found accommodation at Clive Vale Farm. Hunt wrote: *"For the first week or ten days, he (Edward) accompanied me to the Fairlight Cliffs painting the same landscape which I was using for my background. Thus he obtained acquaintance with my manner of work, professing himself satisfied with this; he soon after found limestone rocks that had been extensively cut away, which served exactly for the principal feature of his 'Quarries of Syracuse'. Later, in the intervals of his other work, with a great deal of joking, he exercised me in Italian, and beat out new Nonsense Rhymes which afterwards found a place in his well-known volumes...."*



The Strayed Sheep



The Light of the World



Fairlight Downs

While painting with Edward Lear, Millais spent a day with them - walking on the beach and picking up cuttle-fish bones, that Millais took home - he said that he had never seen such good ones, and that a painter never knew when he might find them essential. Hunt went on to describe his stay here. *"In the intervals of my attention to the picture from the cliff, I commenced the little landscape of Fairlight Downs. 'The Strayed Sheep' was only finished after the equinoctial gales and their suite of rains and wind had often marred the day's work, and my extension of the original limits of the picture had proved a more serious addition to the extent of my work that I had contemplated, so that my rent at home, the bills at my Fairlight lodgings, and the cost of materials and carriage had exceeded the price (seventy guineas) which was to be paid for the picture."*

Nevertheless, despite all his difficulties the painting is stunning and depicts a scene we all know and love. Holman Hunt's skill shows his detailed observation of the natural world and his vivid use of colour. It is good to know that after more than 150 years the scenes he painted at Fairlight can still be enjoyed by every walker on the Firehills today.

CHURCH SERVICES:

Sun. 6th Nov. 9.30am - Parish Communion, St Mary & St Peter
Sun. 13th Nov. 10.30am - REMEMBRANCE SUNDAY Service, St Mary & St Peter
Sun. 20th Nov. 8.00am - Holy Communion, St Nicholas, Pett Level
Sun. 27th Nov. 9.30am - Parish Communion, St Mary & St Peter



JOHN COX

Quality Building Work

*Inside and out
No job too large or too small*

PLASTERING, ROOFING
CERAMIC & MARBLE TILING
DECKING, PATIOS, ETC.

Call John on:

01424 439995
07792964210

FOR A FREE ESTIMATE & ADVICE



DAVE BRETT

DO A LOT!

**HOME AND GARDEN
MAINTENANCE SERVICES
PAINTING AND DECORATING
GRASS CUTTING AND HEDGE
CUTTING**

**CALL DAVE for a FREE ESTIMATE
ON:**

01424 435075

Mobile: 07963 110591



New PC's and peripherals
supplied and installed

Repairs and upgrades

Internet and networking

Domestic and commercial

Fast, friendly & reliable service

01424 812427

enquiries@covecomputers.co.uk



A lady who is
Passionate about gardening
Hither Green Cottage
Pett Road
Pett TN35 4HA

**Ruth Attwell
Gardener**

01424 813805 ~ 07988 809055

ruth-attwell4@sky.com

An honest and reliable lady gardener
who is creative & cares about gardens, will treat
your garden as her own.
All aspects of gardening, lawns, borders, weeding,
replanting, redefining of borders.

For a friendly, efficient & personal service which
offers more
than general maintenance

**From simply weeding
to simply wonderful**

Pett Church News ~ Meriel Deasey

A PRAYER FOR PETT

'At the going down of the sun and
in the morning, we will remember
them'

At this time of Remembrance, Lord,
we recall those who have died in
the service of their country, and we
pray for the peace of the world.
Guide the leaders of this and every
nation; give them understanding of
your righteous will; that the tragedy
and horror of war may be averted
for our coming generations.

We pray for all those in our Parish
who are currently serving with the
armed forces, and for those who
have family and friends also
serving, especially in Iraq and
Afghanistan. Give them your
strength that they may cope with
their anxieties, and please watch
over their loved ones. Pray also for
the work of the Royal British
Legion, the United Nations and all
organisations striving for peace.

HARVEST FESTIVAL: Thank you to
the Flower Ladies and to everyone
who donated produce which made the
church glow with colour. The service,
shared with the Methodists, was well
attended and the sale of produce
raised £58 which has been donated to
Farm Africa. The non-perishable
goods have been donated to the
Family Support Work Organisation.

REMEMBRANCE DAY: 13th
November: Rev. David Wotton will be
coming to take this service which will
start at the later time of 10.30am so
that we can share the nationwide Act
of Remembrance at 11a.m.

The collection will be donated to the
Royal British Legion.

Jumble Sale

The recent Jumble Sale held on
October 8th raised £450 for the Friends
of Pett Church.

Thank you to everyone who helped
and supported this event.

Flowerpots Play Group ~ Kate Woodbridge

I'd like to say a big hello to all the new
parents/grandparents and children
who have come to play group since
September. We're really happy to see
new people and hope you've been
enjoying yourselves. Thank you for
making the effort to come, as it's you
that keep the group going.
The Fun Bus visited us at the end of
September, and the children had a
whale of a time getting really messy
with rice, shaving foam and printing
with paint! It's next due on Monday
21st November.

We meet every term-time Monday,
9.30-11.30 am at Pett Village Hall. If
you've got a new baby, or have just
moved to the village, do come along to
meet other local parents. The first
session you attend is free of charge,
after that it's 50p for under 1's, £2.50
per child over 1 or £3 for a family. This
all goes towards hall hire and
equipment etc, the group is run by
volunteers.

If you want to get in touch, you can
contact us on
pettflowerpots@hotmail.co.uk or just
come along on a Monday morning

PARISH DIARY – October 2011

VH Village Hall – RG Recreation Ground – NBC New Beach Club

Tuesday 1 st	Yoga	VH	9.30 am
	POPP's	VH	10.30 am
	Pilates	VH	6 pm
	British Legion	NBC	7.30 pm
	Quiz Night	Two Sawyers	8.30 pm
Wednesday 2 nd	Coffee Morning	VH	10 am
	Badminton	VH	10 am
	Mobile Library	Church	10.10 am
		Chick Hill	10.50 am
		Smuggler	11.20 am
Thursday 3 rd	Dance & Exercise Class	VH	9.30 - 11.30 am
	Short Mat Bowls	VH	3 pm & 7.30 pm
	Flicks	VH	7.30 pm
Friday 4 th	Badminton	VH	10 am
	MOPPs	Fairlight VH	10.30 am
	Latin American & Ballroom Dancing	VH	2 pm
Sunday 6 th	Boathouse	VH	10.30 am
Monday 7 th	Flowerpots Play Group	VH	9.30 am
	Quiz Night	NBC	8 pm
Tuesday 8 th	Yoga	VH	9.30 am
	POPP's	VH	10.30 am
	Pilates	VH	6 pm
	Garden Club	VH	7.30 pm
	Quiz Night	Two Sawyers	8.30 pm
Wednesday 9 th	Badminton	VH	10 am
Thursday 10 th	Dance & Exercise Class	VH	9.30 - 11.30 am
	Short Mat Bowls	VH	3 pm & 7.30 pm
Friday 11 th	Badminton	VH	10 am
	MOPPs	Fairlight VH	10.30 am
	Latin American & Ballroom Dancing	VH	2 pm
Monday 21 st	Flowerpots Play Group	VH	9.30 am
	Quiz Night	NBC	8 pm
Tuesday 22 nd	Yoga	VH	9.30 am
	POPP's	VH	10.30 am
	Pilates	VH	6 pm
	Parish Council	VH	7.30 pm
	Quiz Night	Two Sawyers	8.30 pm
Wednesday 23 rd	Badminton	VH	10 am
	Mobile Library	Church	10.10 am
		Chick Hill	10.50 am
		Smuggler	11.20 am
Thursday 24 th	Dance & Exercise Class	VH	9.30 - 11.30 am
	Short Mat Bowls	VH	3 pm & 7.30 pm
Friday 25 th	Badminton	VH	10 am

	MOPPs	Fairlight VH	10.30 am
	Latin American & Ballroom Dancing	VH	2 pm
	Women's Institute	VH	2.30 pm
	Pett Nats	VH	7.30 pm
Monday 27 th	Flowerpots Play Group	VH	9.30 am
	Quiz Night	NBC	8 pm
Tuesday 28 th	Yoga	VH	9.30 am
	POPP's	VH	10.30 am - 2.30 pm
	Pilates	VH	6 pm
	Quiz Night	Two Sawyers	8.30 pm
Wednesday 29 th	Badminton	VH	10 am
Thursday 30 th	Dance & Exercise Class	VH	9.30 - 11.30 am
	Short Mat Bowls	VH	3 pm & 7.30 pm

If you want your special events or regular meetings included in the Parish Diary, please notify us ~ a programme or fixture list is fine.

Pett Older Peoples Project over 60s Community Club

POPps was a great success on Tuesday 4th October - its opening day.

To all of you who missed it don't let the idea that you're too young for it yet let you miss out on the fun. As I danced to Keith Osborne's very entertaining show I was amazed at what you could do with two plastic plates!!!!

The lunch was really well presented and tasted lovely and it was great to meet neighbours I had not met before.

So if you would like a day out especially now the winter is coming and want to meet up with people for a chat, some excellent entertainment and a good lunch all for £5.00 then pick up the phone and book your place.

Transport is available at a small extra cost.

Shelia: 01304 219767

Sally: 01424 813101

Ann: 01424 813043



THE BUTCHERS SHOP

PETT ROAD, PETT

(01424) 812148

Personal Friendly Service

Quality Scottish Beef

Prime Pork

English Lamb

Home Cooked Ham

Seasonal Meats

Barbeque Ideas

Delicatessen

Traditional Home made

Sausages & Burgers

Fresh Bread & Milk

Saturday Newspapers

Also in stock are

Frozen goods, ice creams &
comestibles

FENCING

ALL TYPES OF FENCING
SUPPLIED AND ERECTED

25 years experience - examples of our
work throughout the village

For free estimates and advice contact



JOHN OSBORN

Pett 01424 813564 / Mobile 077514 92821

Also Hedge Cutting

Tree Surgery

Mowing

Garden Clearance

OUR LOCALITY IS OUR GUARANTEE



NEED A PLUMBER?

Ray Barden

Plumbing & Heating

01424 812551

ALL ASPECTS OF PLUMBING &
HEATING UNDERTAKEN

40 YEARS EXPERIENCE IN PETT AND
SURROUNDING VILLAGES

No job too large
or too small



HARC CHARITY SHOPS

Welcome Your

Unwanted Items
Including Furniture

Free collection

But please no refuse



01424 720500/722164

Mon - Fri 10 am - 5 pm

Saturday 10 am - 4 pm

Registered Charity

1083566

Ore Tunnel work to close Marshlink rail line

Essential maintenance work on a railway tunnel in East Sussex will lead to the closure of a key route at the start of 2012, passengers have been warned.

Network Rail said the line between Rye and Hastings would be closed for nine weeks from January to March.

This will enable the repair of the Ore Tunnel, along with points and signals, on the Marshlink line.

The closure will affect Southern Railway services across Romney Marsh between Ashford in Kent and Hastings.

Network Rail said it needed to carry out the work in the Ore Tunnel to improve the drainage and repair the lining inside to prevent water seeping through.

"If this work does not take place, there could be substantial damage to the structure in the coming years which could have a major impact on people's journeys," a statement said.

It added that the work had been scheduled for the winter to try to avoid "the busy summer months, minimising the impact for passengers and the businesses which rely on tourism in particular".

Public meeting

It said other work would be carried out at the same time to improve the railway and minimise disruption, including upgrading points and signals to improve reliability, and the maintenance of bridges and tracks that could lead to higher line speeds.

Southern Railway said it would operate a rail replacement bus service between Hastings and Ashford International.

It said bus services would also need to be extended to Bexhill on some weekends.

The MarshLink Action Group (MLAG), which acts for passengers using the line, said while it believed the works were necessary, there were still questions arising from the intended closure of the line that needed to be addressed.

Pett WI

~ Heather Godwin

At the September meeting members were entertained by Mr Rex Swain, the Town Crier of Rye who arrived in full Town Crier regalia. Although the talk was programmed as 'Old Rye Fishermen', Mr Swain also regaled the members with tales of his mother, his own poems and personal history of how and why he ended up in Rye over 60 years ago together with the history of Town Criers.

The WI Members were pleased to replace the Village Hall clock Two new

prospective members were welcomed and all enjoyed a delicious tea of sandwiches and cakes.

At the October meeting on the 21st of the month will include a talk by Mr John Proctor on National Service in Malaya.

If you are interested in coming along to any of our meetings at Pett Village Hall on the third Friday of every month, please contact Mrs Elliot, the President on 01424 813000, or email heathergodwin@lineone.net.

DANCE / EXERCISE CLASS FOR BEGINNERS

Every Thursday 9.30 am - 11.30 am
Pett Village Hall

Simple movement to music taken by fully qualified teacher

All ages and fitness levels welcome

Do you want to:

feel fitter

burn calories

increase flexibility

increase bone density

improve muscle tone in a relaxed and fun way?

Just turn up with a pair of good trainers
on your feet and loose fitting clothes - lycra optional!

For further details contact

Mrs Robin Hutt ~ 01424 813182



An effective and practical way to access high quality, home based physiotherapy treatments

PHYSIOTHERAPY IN YOUR OWN HOME

Jessica Macdonald is a highly experienced HPC, CSP and AACP registered physiotherapist, who will provide Physiotherapy and Acupuncture for Pain control, in your own home or workplace within the local area. Jessica is specially trained to: Relieve Pain, Improve Strength, Movement, Mobility and Function and Provide Preventative Health Care Advice.

Treatments include: Pain management, Therapeutic, Relaxation and Sports Massage, Acupuncture for Pain Control, Pre and post-operative treatment, and advice for Elective Orthopaedic surgery, Rehabilitation following Trauma, Mobilisation, Manipulation and Electrotherapy, Postural re-education and ergonomic advice, Personal Training, Pilates and lifestyle guidance.

To discuss your needs and to book an appointment
for a home visit, please contact:

JESSICA MACDONALD
PHYSIOTHERAPIST

T: 01424 813053 M: 07795 562558

E: jessmacd@gmail.com W: www.rvphysio.co.uk



Gatehouse Tiling

Supply and installation of quality floor and wall tiling

Family run local company offering a prompt, reliable, clean & accurate customer focused service

Using only quality materials, all installations & repairs professionally undertaken

Ceramic, Natural Stone, Porcelain, Slate, Travertine, Mosaic, Marble & Victorian tiles **all at trade prices**

For a free highly competitive estimate please call Richard

07917 195583 or 01424 752730

Email:

richard@gatehousetiling.co.uk

Stoneley

Garden Machinery Sales and Services
All makes serviced

Most makes sold at competitive prices
Now

Incorporating Castle Lawns

All lawn care work undertaken

Mowing, Aerating, Scarifying,
Weed Control, Fertiliser, Top Dressing,
Seeding, Turfing, Logs.

All other garden work undertaken

Call us today for a free quote

Prices start from £15.00 per treatment based on a lawn
up to 60m²

For more information visit

Website: www.castlelawn.com email: derckstone@btinternet.com

Or call

01424 812 310 / 07817 795 142

Baked fish with a Dill Sauce

Serves 4

juice ½ lemon

½ tsp dill

¾ tsp oregano

¼ tsp paprika

50ml milk

fresh grated black pepper

125g unseasoned breadcrumbs

2 tbsp parmesan cheese

4 fish steaks or fillets, 1/2 to 1 inch
thick (halibut, salmon, cod or
haddock)

125ml sour cream or creme fraiche

2 tsp horseradish sauce



Preheat an oven to 425F/ 220C

Prepare dill sauce: combine cream or
creme fraiche, horseradish, lemon juice,
dill and pepper in a small bowl. Cover and
keep cool until ready to serve.

Prepare crumb coating: mix breadcrumbs,
cheese, oregano and paprika in a small
bowl. Spread mixture evenly on a plate.

Rinse fish and pat dry. Dip the fish in milk
and then crumb coating (both sides).

Place the fish in a shallow oiled baking
dish and place in oven. Cook according to
thickness of fish, 10 minutes per inch of
thickness. Fish should be browned on
outside but moist and slightly opaque in
thickest part.

Remove from pan and spoon dill sauce
over the top.

A Plea for the Hedgehog ~ Mike Russell Sussex Wildlife Trust

When was the last time you saw a live hedgehog? I ask the question as my failing memory cannot recall seeing one at all this year and other people are telling me the same. Hedgehogs seem to be becoming yet another one of our native species that we used to see regularly but now we don't.

That the hedgehog population is declining significantly is difficult to scientifically quantify. They are difficult to survey due to their preferred night time activities and perhaps it wasn't that long ago we took them for granted because they were seen so regularly that it wasn't thought that they might be in difficulty. Paradoxically, apart from the 'hearsay' evidence, one of the main ways to measure their apparent decline is that there are fewer dead hedgehogs on the road. Road casualties are now becoming quite a good evidence base for assessing the fortunes of some of our bigger mammals these days.

Going back in time, hedgehogs have been romanticised and vilified in equal measure. Under the Preservation of Grain Act of 1566, an act that was not repealed until 300 years later, hedgehogs were wrongly classified as vermin and therefore attracted a bounty, with the consequence that thousands upon thousands were unnecessarily killed. Although not a widespread practice, hedgehogs were often eaten by us humans, the preferred recipe was the poor

animal being stuffed with sage and onion, then coated in clay and spit roasted over an open fire.

Unsubstantiated myths abound when it came to hedgehogs. One long enduring myth is that they suckle milk from a cow's udder though apparently no-one has actually observed this, while another is that in the autumn hedgehogs deliberately roll over fallen apples so their prickles spike them and they can then take them to a favoured store. There is even a 14th Century painting that shows a hedgehog collecting apples on its spines!

In a more positive light, hedgehogs are often depicted favourably in children's stories such as Beatrice Potter's Mrs Tiggy-Winkle and Alison Uttley's Fuzzypeg in 'Little Grey Rabbit'. Gardeners are, of course, very fond of hedgehogs as they like nothing more than tucking into slugs and snails, although our propensity to go for nice tidy gardens, along with the increase in use of slug pellets, can also contribute to making life difficult for them.

About this time of year, hedgehogs are thinking about settling down for the winter, although full hibernation doesn't take place until November. In warm spells during the winter they will often wake up, have a look



round for some food and renew their nest. Hibernation time is when hedgehogs are at their most vulnerable. Young ones born later in the year tend not to put on enough weight to see them through the winter, plus that if they wake up and go out in search for food and the temperature falls rapidly they can die of cold.

Rather unfortunately, at the time when they are just ready to hibernate, we build them perfect shelters with our bonfires, so an annual plea goes out from organisations like ours to ask people to check the bottom of bonfires for signs of sleeping hedgehogs before setting them alight.

By no means currently endangered, it would nevertheless be a real shame if this endearing, harmless and beneficial animal was allowed to disappear from our world; they don't require much, just a good, clean source of food free from poison and somewhere safe to see out the winter. It's not too much to ask that we provide this for them - is it?

www.sussexwt.org.uk

PETT TENNIS CLUB

Open to everyone

Play any time - no need to book
Sited at Pett Recreation Ground

Annual subscription:
£24.50 junior & student ~ £40 adult
£100 Family

Contact:
Dennis Lanner ~ 01424 812430

Coffee Morning ~ Sally Williams

Thank you to everyone who came to the coffee morning last month, it was lovely to see you all again. Eves chocolate cake went down a storm!

We look forward to seeing you all again on the 2nd November at 10.00 am in the Village Hall.

Macmillan Coffee Morning ~ Jo and the Wibble Wobbly Walkers



Well done everyone!

Many, many thanks to everyone involved:-
invitation leaflet distribution; raffle prize donations; items for stalls made or bought; preparation before, during and after the event and lastly the folks who came on Friday and had coffee and bought goods.

To all who took part we raised the grand sum of £969.45

PETT PLUMBING & HEATING

Have all your gas fired heating and cooking appliances serviced and checked by your local Corgi Registered heating engineer

Take advantage of our **LOCAL SPECIAL**

Have two appliances serviced and checked for the price of one

Other services available

- Complete heating systems designed and installed
- Under floor heating and extra radiators installed
- Landlords Gas Safety Certificates
- Power flushing of heating systems to remove sludge and cold spots
- Boiler changes and upgrades
- Unvented hot water cylinders installed and serviced
- Leaking Hot water cylinders replaced and upgraded
- Complete bathroom designed, installed and tiled
- Roof insulation and pipe/tank insulation installed
- All your plumbing problems undertaken efficiently and promptly*
- Any genuine written quotation beaten on price with this advert*
- Call Andy on
- 01424 813819 or 07809 573389**

Andrew Goodsell, 4 Rectory Park, Pett, East Sussex TN35 4EJ

MICHAEL PENFOLD

GENERAL BUILDING
PLASTERING
MAINTENANCE
PAINTING
References available
Reliable and Trustworthy

36 New Winchelsea Rd, Rye, East Sussex 01797 225906 ~ 07974 306258

Your
Key
Concierge
YourKeyConcierge.co.uk

**ARE YOU WORRIED
ABOUT YOUR EMPTY
HOUSE?**

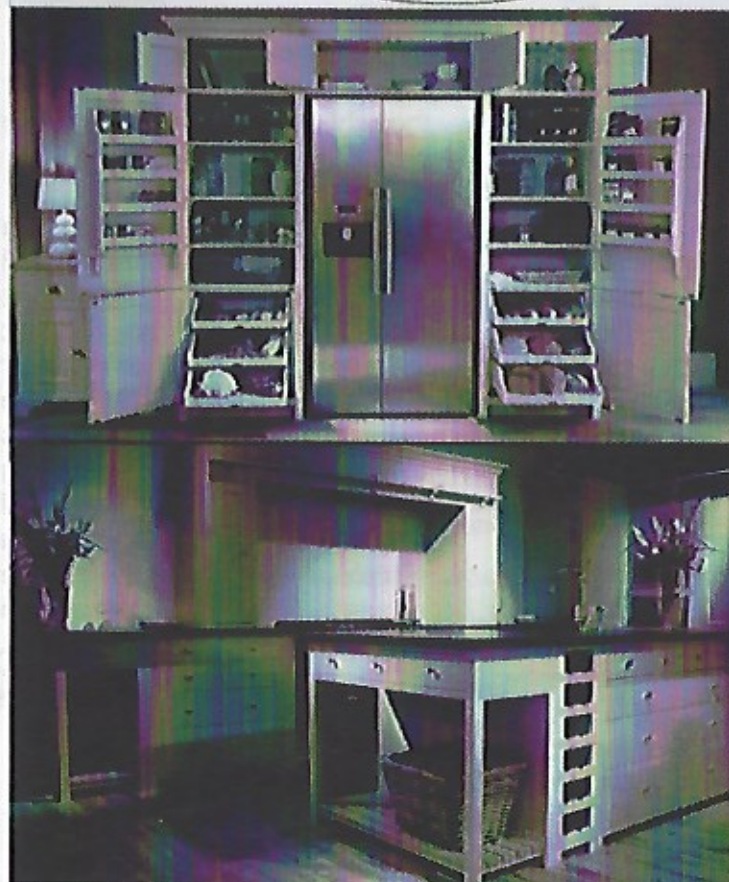


DO YOU HAVE A SECOND HOME? ARE YOU LEADING A BUSY LIFE?
RELAX with our **SECURE KEYHOLDING SERVICE** we can provide:

- Home checks,
- Emergency cover
- Second Home Management

For further details: www.yourkeyconcierge.co.uk, E-mail info@yourkeyconcierge.co.uk,
or telephone **DAVID DUNLOP** on 01424 813018/07912 686429

MARTINS OF HAWKHURST



Authorised
agents for

Agfuno

noite

hardy

hardy

EEF

Miele

Hotpoint

LIEBHERR

Falcon

LACANCHE

britannia

Taste is everything

GE

GE

FRANKE

DESIGN - INSTALLATION - SALES - SERVICE

Tel: 01580 753 470

23 Cranbrook Road
Hawkhurst, Kent, TN18 4AZ

www.martinsofhawkhurst.co.uk
mail@martinsofhawkhurst.co.uk

GARDENING CLUB ~ Sue Dengate

This month we welcomed back the Rev. Dickie Dengate to talk about apples - after telling us about his working life and how he got to be an apple grower, he went through the various types of diseases and pests that can beset the apple with slides so we could see what to look for and how to treat them. There were a number of questions from members as several of us have just started to grow our own fruit. We were then able to sample a truly wonderful selection of apples grown by him in his local orchards. There must have been at least 8 varieties including Cox, Bramley, Gala, Golden delicious and Red delicious, and two or three types of Russet apple not to mention the chance to acquire as many as you could comfortably carry home. There was also bottles of apple juice (which Dickie's son has been promoting, made from their apples) for us to buy.

We are so lucky that there are still local orchards which supply fruit to truly local outlets so that

we can enjoy the best of flavours and freshness. We can after all buy excellent local honey and eggs and with a splendid local butcher we are almost selfsufficient - food for thought..... (sorry about the pun).

For our November meeting on Tuesday, 8th November we will have a talk from a representative of the Sussex Wildlife Trust to cover Gardening for Wildlife. We have requested that this talk also covers making allotments wildlife friendly and possibly helping to create a wildlife corridor in the village. We look forward to seeing you all.

Thank You

To all the many friends and neighbours in Pett, my heartfelt thanks for your kind messages of condolence. This really has meant so much to us and helped Rick, Jacqui and myself through this very sad time.

Danni Bourne



B K Joinery

Bespoke Joinery & Cabinet Makers
Replacement non standard
Doors, Windows and Sashes

Bookcases, Cabinets, Bedroom Furniture
Individual Kitchen Units
Built-in or freestanding

Brian Patterson ☎ 01424 814670



GARDENER PROPERTY CARE (Est. 1993)

Replacing, Renewing & Cleaning

- Guttering
- Fascia & Soffits
- Moss Removal & Roof Treatments
- Roof Repairs & Insulation
- UPVC Whitening
- Experienced - Reliable - Professional,
- Complete re-roofs and all types of repairs carried out.

Save money during credit crunch - insulate your roof to save on heat loss with thermo insulation
Call for a **FREE** quotation & competitive prices

Office: 0800 118 2489 or Mobile: 07855 604397



A MAN THAT CAN ...

I CAN TACKLE ANY ODD JOBS AROUND THE HOME OR GARDEN
THAT YOU MAY BE UNABLE TO DO YOURSELF ANYTHING FROM A
SQUEAKY HINGE TO PUTTING UP SHELVES TO ASSEMBLING FLAT-PACK
FURNITURE OR A GARDEN SHED
I AM MATURE, HONEST, RELIABLE
AND HAVE BEEN CRB CHECKED

REFERENCES AVAILABLE

CALL FOR A FREE ESTIMATE ~ NO JOB TOO SMALL

CHRIS SHERWIN, PETT VILLAGE

TEL: 01424 813825 MOBILE 07875 109215

Letters

This is a response to our report of an almost impossible to use stile~ Editor

Dear Editor

Regarding Footpaths

I contacted East Sussex (rightsofway@eastsussex.gov.uk) regarding Guestling FP34a&b and received this reply "We supplied the Jury's with the stile kits for paths 34a/b some time ago. I gather that the farm has been sold though, so I think that we'll be contacting Mr Bellhouse/Paul Elliot who are normally extremely good with access of course."

I do not know if the information regarding the farm sale is correct but hopefully the stiles will be renewed soon. On the issue of gates rather than stiles the reply was "I'm afraid this one isn't on the cards for nomination as a gate route at present unfortunately though. Funding is tight obviously and there are too many issues on the route to make it a candidate. One for the future I think".

If the Wiggly Wobbly walking group have an opinion on which routes in Guestling should be given special attention I am sure that the

PC will be happy to hear and lobby for improvements.

Paul Brown
Guestling Parish Clerk

Dear Editor,

Having recently resigned from the Parish Council after almost two terms, I was very sorry to hear Bob Hodgson was leaving his post as Parish Clerk.

I always found Bob extremely helpful, courteous and good humoured, despite the efforts of some people who seemed to be determined to make his job as difficult as possible with their not always helpful suggestions on how local problems can be tackled. We should all be very grateful for all Bob's efforts on behalf of the village particularly for his work at the Recreation Ground, allotments, fund accessing and many other projects.

Good luck to whoever replaces Bob, he or she has a very hard act to follow.

Personally I would like to thank him for all the ready help given in our time together on the Parish Council and wish him all the best for the future.

Brian Roberts

WHAT'S ON IN NOVEMBER 2011

Rye Bonfire Celebrations
Saturday 13th November
1830h start



On Saturday 13th November visiting Societies led by Rye and District Bonfire Society will process through Rye with flaming torches, drum bands, floats and walkers from local groups and, bringing up the rear our Dragon, Scorchers and, symbol of the Society, The Burning Boat.

The procession winds its way through the town to the Salts where a 'Normous Bonfire' is waiting to be lit, followed by an excellent firework display.

Santa Specials at Kent & East Sussex Railway

22nd November to 24th December
Station Road, Tenterden
TN30 6HE
Tel: 01580 765155

Come and experience one of Kent's best loved attractions this Christmas with a journey on the popular Santa Specials, which combines a nostalgic steam train ride and a meeting with Santa Claus! Every child will receive an age appropriate quality gift from the pixies all included in the ticket price. Book early to avoid disappointment.

Christmas Fair

26/ 27th November
Great Dixter House & Gardens
Northiam Tel: 01797 252878

The Christmas Fair will take place in the Great and Yeomans Halls, surrounding barns and out buildings, plus an opportunity to see the garden in winter then warm yourself by an open fire in the house. The stalls will include products from our own shop and nursery including potted bulbs and unusual gift ideas, as well as stalls hosted by local craftsmen such as vintage tools, seeds, and stalls for all gift needs: including cashmere knitwear, jewellery, scented candles and handmade gifts for all sized pockets. The Gardens, Nursery and Gift Shop will be open to the public for the weekend of the fair. Fresh, hot food and light refreshments will be available.

Rye Harbour - Winter Lectures

ALL LECTURES ARE HELD AT WINCHELSEA BEACH COMMUNITY HALL & ARE ORGANISED BY THE FRIENDS OF RYE HARBOUR NATURE RESERVE. OPEN TO ALL - DONATIONS APPRECIATED.

Saturday November 26th 2011
at 2.30pm - The Folklore of Plants - An illustrated talk by Sue Buckingham.

**PODIATRY & CHIROPODY
CLINIC**

(formerly called The Chiropody Clinic)

**63a CINQUE PORTS STREET,
RYE**

TEL: 01797 224472

NOW OPEN EVERY WEEK DAY

for treatments of foot pathologies
Each Chiropodist and Podiatrist is fully
qualified and registered with the
Health Professions Council

**HOME VISITS AVAILABLE
TO THE HOUSEBOUND**

PARKING NEARBY



hastings furniture service

registered charity number 1000257

Do you have household furniture or electrical items in good
condition that you no longer need?

Reusable donations collected free—throughout Hastings & Rother.

- Help local low-income households furnish their homes
- Prevent reusable items filling up landfill sites
- Support training for local unemployed people

Full House Clearance Service: free quotation visit

Our store at 6-10 Dorset Place, Hastings is open Monday—Saturday

www.hfs.org.uk

01424 44 11 12

**- J.Gardener -
Window cleaning**

Professional,
Reliable and Insured
Residential
& Commercial

Frames and Sills included



Office: 0800 118 24 89

Mobile: 07855 604397

- Est. 1993 -

P.J. Turner

**ALL ASPECTS OF
TREE WORK
CONTRACTOR**

**MOWING – LOGGING
FENCING**

**FREE TELEPHONE
ESTIMATES 01424 812604**

**John Bourne
13/2/1929 - 26/9/2011**

John was born at Pett Level, the second eldest of six children, he attended Pett School, and when he was about 12 years old the family moved to Rye.

After leaving school John was a delivery boy for Home & Colonial, and he worked for the Agricultural ministry, digging and planting the marshes for the war effort.

At 18 he did his national service, joining the medical core at Bovington, and at 23 he enlisted in the Royal Engineers. He spent a short time in Egypt working the floating cranes; he had very fond memories of those years.

John married Danni in Bournemouth in 1958. After Rick was born they came to visit the family in Rye and the decision was made that they should stay, so John went back, packed up the motorbike and sidecar with all it could carry and they moved up to Pett village shortly after. Jacqui's arrival completed the family.

John worked for many firms in many places over the years, his expertise being in crane driving and pipe laying.

He was a hard worker but he also liked to have a bit of fun, nobody liked an impromptu party more than he did, as many will recall.

John and Danni enjoyed country and western music, they could often be found in the Kings Head in Ore pursuing this interest. The Royal Oak, The Beach Club and Queen Adelaide in Rye were also regular party places for them, and of course John could always be relied upon to produce the trusty Harmonica out of his pocket to liven things up a bit for his and everyone else's enjoyment.

He retired at 65, giving him time to enjoy his art work, making his model houses, working his garden and doing whatever it is men do in there sheds! It also gave him time to spend with his grandchildren, who gave him much pleasure.

The army's reference to John read, "Excellent crane driver, keen and intelligent, honest, sober and trustworthy, smart in appearance."

Family & Friends today would read, "Grafter, Reliable, Good company, talented, one off Husband, Dad, Granddad, Brother, Uncle and Mate."

Travis Electrical

Domestic electrician part P compliant covering all aspects of electrical work

Rewires

Luke Travis

New installations

07821325797

Extensions

travis.electrical@hotmail.com

Additional sockets or lighting points

www.traviselectrical.co.uk

Consumer unit upgrades

Periodic inspection

Fault finding

Free quotes

17th edition qualified

01424 773006 /



Capability Chris

Garden Design & Restoration

Chris O'Donoghue

Chelsea Medal Winner

Garden Design

Beautiful hand-coloured drawings

Comprehensive planting plans

Concise care instructions

Regular aftercare and maintenance

For free consultation please contact

Chris O'Donoghue

07887 554412 – www.chrisodonoghue.co.uk

A A Farnes
Electrical Contractor

Your local NICEIC part P

17th edition JIB

Registered electrician

Covering domestic
commercial &
industrial installations

**For all your electrical
Requirements**

No obligation quote

Please call Alan Farnes

Home: 01424 813121

Mobile: 07967794749

Email: famsy@hotmail.co.uk

FOR SALE
Local free-range
Gloucester Old Spot
PORK



Half or whole pigs

Nick

01424 813965 ~ 07969 501853

Chris

07977 907773



District Councillor's Report ~ Robin Patten

Email: cllr.robin.patten@rother.gov.uk

We will begin our Budget discussions for 2012/2013 shortly but there are already major and potentially damaging issues that will have to be taken into account.

Now that the Conference season is over it is necessary to consider some of the statements made and their possible impact on us. One of the most tempting promises has been the offer to encourage and enable Councils to set a 0% rise on their Council Tax for the second year running. At first glance this seems attractive but on closer examination there is a definite downside. Currently RPI is running in excess of 5% and nearly every large service contract we have has an RPI clause in it. If we were to keep our Council Tax at 0% some £250k will have to be found to make up that shortfall. There is also absolutely no guarantee that the Government will not drop the scheme in 2013/2014 leaving Councils who have taken advantage of the two year freeze operating from a significant minus position. There is most certainly an argument to decline the Government's offer and agree a rise this year of 2.5% which as far as Rother's share of the Council Tax is concerned equates to an annual increase of £4.03 or 8p per day.

The Government are proposing to replace the Formula/Revenue Support Grant currently amounting to £5.034m per annum and dropping in 2012/2013 to £4.334m with a

scheme which will be based on a Business Rate Retention scheme.

Theoretically this will see the Council's income increase in line with inflation but does not take into account the additional costs of delivering services to the rural area. This is potentially optimistic and will need the Council to maintain its Business Rate income collection rates and that the rateable values of businesses in the District at worst remain constant.

We know as part of the Government's reduction in grant that we will be awarded £700k less this year on top of the £1m reduction we lost last year. Fortunately the steps already taken and the plans made with redundancies and resetting staff and their activity significant and essential savings can be achieved over the next 2/3 years.

Discussions are well advanced with three other Councils regarding the Waste contract. From April 2014 we could expect an annual increase of £1m per annum for the service. There is a possibility that when tendered the outcome may be more favourable because of the overall size of the contract but whilst hoping for the best it will be necessary to plan for the worst.

It is clear that further and ongoing savings will be required so that we can deliver a balanced budget.

Opposite is a new basic time table of the 347 and 344 bus routes. For a more detailed version contact:
 eastsussex.gov.uk
 Coastal Coaches - 01797 253176 www.coastalcoaches.com
 Stagecoach - 08702 433711 www.stagecoachbus.com
 (This information was correct at the time of going to print (July 2011) but alterations can occur)

JEMPSONS BUS - 'Hail & Ride' to the Superstore. Every Friday calling at Allards 09:15 and Chick Hill (top) 09:20 and departs Jempson's at 11:30. Nominal charge of £1 return. There is no need to walk to the stops as the bus will stop when hailed if it is safe to do so.

M.O.P.P. ~ MARSHAM OLDER PEOPLES PROJECT

CENTRE FOR OLDER RESIDENTS OF Fairlight, Pett, Guestling, Three Oaks & Winchelsea

Meeting at Fairlight Village Hall, Broadway, every Friday at 10.30 - 3.30 pm
 Lunch, transport, exercises, health information and advice, together with visits from Podiatry and other health services, visits from local Farm shop, clothing shops, and social activities.

Cost: £4.50 To include lunch and refreshments

For further information or to arrange a visit one Friday ring **Sheila Thomas** co-ordinator on 01304 219767 or sheilaspan@btinternet.com or **Sylvia Gutsell** 812544

Home nail cutting service available ~ contact Sheila Thomas

MOPPs TRANSPORT - a bus will be coming through Pett each Friday to pick up outside Pett POST OFFICE around 10 am, then outside the Royal Oak at about 10.10 am. If you are unable to get to either of these pick-up points and need to be picked up from your home then please ring Sheila on 01304 219767 or Sylvia on 01424 812544

POPP ~ PETT OLDER PEOPLES PROJECT

Every Tuesday in Pett Village Hall between 10.30am - 2.30pm

Future Calendar:

- 1st November: Comfort Plus - Demonstration of mobility scooters & furniture
- 8th November: Rye Town Crier - Rex Swain - tells his stories
- 15th November: Music for Health - Keith Osborne
- 22nd November: Simply Feet - Talk on care for the feet

Come along, meet new friends and have a nice day out. For further information or to come and visit us on a Tuesday, please contact our Co-ordinator
 Sheila Thomas on either 01304 219767 or 07774 573086

Cost: £5.00 inclusive of lunch and refreshments.
Transport can also be provided for an additional £2.50

Committee: Ann Nicholls 813043 - Sally Williams 813101 - Chrissie Penfold - 813414

347	Pett - Hastings	Monday - Friday							Saturday
Pett (Chick Hill)	0819	0826	1002	1102	1242	1342	1442	1542	0826 1245
Pett (Church)	0822	0829	1005	1105	1245	1345	1445	1545	0829 1248
Guestling (School)	0829								
Guestling (White Hart)	0834	0834	1010	1110	1250	1350	1450	1550	0834 1253
Ore (Kings Head)	0838	0848	1014	1114	1254	1354	1454	1554	0838 1257
Ore (Christ Church)	0840	0840	1016	1116	1256	1356	1456	1556	0840 1259
West Hill (Whitefriars)			1021	1121	1301	1401	1501		1304
Hastings (Harold Place)	0849	0849	1025	1125	1305	1405	1505		0849 1308
Hastings (Rail Station)	0851	0851	1027	1127	1307	1407	1507		0851 1310

Hastings - Pett	Monday - Friday							Saturday
Hastings (Rail Station)	0930	1030	1210	1310	1410	1510	1735	1213 1735
Hastings (Queens Road)	0935	1035	1215	1315	1415	1515	1740	1218 1740
West Hill (Whitefriars)	0940	1040	1220	1320	1420			1223
Ore (Christ Church)	0945	1045	1225	1325	1425	1525	1750	1228 1750
Ore (Kings Head)	0947	1047	1227	1327	1427	1527	1752	1230 1752
Guestling (White Hart)	0951	1051	1231	1331	1431	1531	1756	1234 1756
Guestling (School)						1534		
Pett (Church)	0956	1056	1236	1336	1436	1536	1801	1239 1801
Pett (Chick Hill)	0959	1059	1239	1339	1439	1539	1804	1242 1804

344 Bus Time-Table	Hastings - Rye														
Hastings (Stn Int'change)	0750	0850	0950	1050	1150	1250	1350	1450	1550	1650	1750	1855			
Hastings (Breeds Place)	0752	0852	0952	1052	1152	1252	1352	1452	1552	1652	1752	1857			
Ore (Christchurch)	0800	0900	1000	1100	1200	1300	1400	1500	1600	1700	1800	1905			
Fairlight Glen	0803	0903	1003	1103	1203	1303	1403	1503	1603	1703	1803	1908			
Fairlight Cove (Hotel)	0809	0909	1009	1109	1209	1309	1409	1509	1609	1709	1809	1914			
Pett Level	0815	0915	1015	1115	1215	1315	1415	1515	1615	1715	1815	1920			
Winchelsea (Smugglers)	0819	0919	1019	1119	1219	1319	1419	1519	1619	1719	1819	1924			
Winchelsea Beach	0821	0921	1021	1121	1221	1321	1421	1521	1621	1721	1821	1926			
Winchelsea (Bridge End)	0824	0924	1024	1124	1224	1324	1424	1524	1624	1724	1824	1929			
Rye (Rail Station) arrive	0830	0930	1030	1130	1230	1330	1430	1530	1630	1730	1830	1935			

Rye - Hastings															
Rye (Rail Stn) depart	0703	0758	0813	0843	0928	1028	1128	1228	1328	1428	1533	1633	1733		
Winchelsea (Bridge)	0709	0804	0819	0849	0934	1034	1134	1234	1334	1434	1539	1639	1739		
Winchelsea Beach	0712	0807	0822	0852	0937	1037	1137	1237	1337	1437	1542	1642	1742		
Winchelsea (Smuggler)	0714	0809	0824	0854	0939	1039	1139	1239	1339	1439	1544	1644	1744		
Pett Level	0718	0813	0828	0858	0943	1043	1143	1243	1343	1443	1548	1648	1748		
Fairlight Cove (Hotel)	0724	0819	0834	0904	0949	1049	1149	1249	1349	1449	1554	1654	1754		
Fairlight Glen	0730	0825	0840	0910	0955	1055	1155	1255	1355	1455	1600	1700	1800		
Ore (Post Office)	0733	0843	0843	0913	0958	1058	1158	1258	1358	1458	1603	1703	1803		
Hastings (Harold Place)	0741	0851	0851	0921	1006	1106	1206	1306	1406	1506	1611	1711	1811		
(Rail Stn Interchange)	0743	0853	0853	0923	1008	1108	1208	1308	1408	1508	1613	1713	1813		

SOME VERY USEFUL NUMBERS

Gas board, in case of leaks	0800 111 999 (24hrs)
EDF energy, overhead power lines or loss of electricity	0800 783 8866 (24hrs)
Water board, burst pipes in roads	0800 028 3399 (24hrs)
South East Water (Office hours only)	0845 602 1724
Police (Non emergency calls)	0845 6070 999
Fire (Non emergency calls)	0845 1308 855
Ambulance (Non emergency calls)	01622 747010
Conquest Hospital	01424 755255
Eastbourne Hospital	01323 417400
Bexhill hospital (ask for Bexhill Hospital and department)	01424 755255
NHS Direct (24hr call back system)	0845 4647

Doctors

Harold Road Surgery	01424 437962
Enquiries	01424 720878
Pett appointments	01424 728872
Guestling Surgery, Chapel Lane	01424 814332
Roebuck Surgery, Old Town Hastings	01424 420378
Shankill Surgery, Fairlight road	0844 4772488

Samaritans	0845 909090 (24hrs)
RSPCA emergency animal welfare	0300 1234 999 (24hr)
Victim Support	0845 3030 900

East Sussex County Council 24hr help line	0345 123600
Disabled Blue Parking Badges Information	0845 6080191
Rother District Council Town Hall, Bexhill	01424 787878
Planning	787661
Environmental Health	787550
Pest Control	787545
Recycling & rubbish collections	787580
Missed Bins	787502
Bulky waste	787570
Bus passes	787999
Citizens Advice Bureau. 24, Cornwallis Terrace, Hastings	01424 430400
Age Concern Rother Office	01424 775721
Rye Office	01797 270459
Information line	0800 009966
UK Passport Services	0870 521 0410
Social services	0845 601 0844
Lifeline	01424 781234
St Michaels Hospice 25 Upper Maze Hill, St Leonards	01424 445177
Bus Enquires (Traveline)	0870 608 2608
Pett Post Office	01424 812161
White Rock Theatre	0870 145 1133

All information supplied was correct at time of going to press, but changes in contact names and numbers sometimes occur.

E&OE

VILLAGE HALL COMMITTEE

The Village Hall is available for private hire – rates on request

Name	Telephone No ~ Email	Responsibility
Phil Button	812148	Chairman
Ray Barden	812551 ray.barden@btopenworld.com	Vice Chairman
Jeanette Barden	812551 jeanettebarden@btopenworld.com	Secretary
Carol Pecorini	813544	Treasurer
Derek Johnson	814829	Hall Manager & Hall Bookings
Evelyn Darnell	812615	Committee Member
Tim Jury	813620	Committee Member
Philippa Strickland	814384 pstrickl@waitrose.com	Committee Member
Sally Williams	813101	Committee Member

CONTACT DETAILS FOR VARIOUS ACTIVITIES IN THE VILLAGE

Activity/Society/Club etc	Contact Name	Telephone Number ~ Email
Allotment Chair	Mike Wilkins	813206 mikewilkins53@hotmail.com
Badminton Club	Cathy Norris	812129 cnorri@hotmail.co.uk
British Legion	Brian Green	812450 toffee35@gotadsl.co.uk
Bowls Club	Barry Quaife	432897 barry.quaife@virgin.net
Cricket Club	Andrew Dunlop	813368
Dance & Exercise Class	Robin Hutt	813182 robinhutt@btinternet.com
Flicks Film Society	Chris Saint	813047 chris@saintfamily.net
Flower Show Chair	Diane Crouch	813177
Flowerpots Toddler Group	Kate Woodbridge	pottflowerpots@hotmail.co.uk
Friends of Pett Level	Rosemary Moon	812246
Preservation Trust		
Gardening Club	Pauline Barker	812872
Latin American & Ballroom	Mr & Mrs Hall	813355
Dancing		
MOPPs & POPPs	Sheila Thomas	01304 19767 sheilasp@btinternet.com
Naturalist Society	John Taylor	814674 jnt@talktalk.net
P.N Distribution co-ordinator	Brenda Kirkham	815022
Pett on the Net	Peter Wiggins	813922 peter@pettnet.co.uk
Pilates	Gaby Valenti	442304
Short Mat Bowls	Linda Jaconelli	431814 lindajaconelli@btinternet.com
Tennis Club	Dennis Lanner	812430 lanner4ex@btinternet.com
Women's Institute	Joyce Elliott	813000
Yoga	Victoria Eldon	01797 225607

If we have not included your Club/Society etc. please let us know together with contact name, telephone number and email address

pettparishnews@live.co.uk

PETT PARISH COUNCIL – 2011/2012

Councillors	Address	Telephone No:
Cllr. Andrew Dunlop (Chair)	1 Lunsford Farm Cottage, Pett	813368
Cllr. Dr Jillian Green (Vice Chair)	'October', Pett Road, Pett	813841
Cllr. Martin King	1 New Coastguard Cottages, Toot Rock, Pett Level	814078
Cllr. Paul Stapley	Bower Cottage, Pett Road, Pett Email: paul.stapley@virgin.net	814202
Cllr. David Richards	Ambleside, Pett Road, Pett Email: richards.davidj@yahoo.co.uk	815224
Cllr. Judith Dean	Delvings, Chick Hill, Pett Email: jmd_delvings@live.com	812249
Cllr. Mark Hall	The Water House, Pett Road Email: markhall.pett@gmail.com	812781
Clerk		
Bob Hodgson	17 Barnfield Close, Hastings TN34 1TS Email: bob_pettpc@yahoo.co.uk	716232

RESPONSIBILITIES

Pett Village Hall Management Committee	Cllr. Jillian Green
Pett Sports Association	Cllr. Martin King and Paul Stapley
Police Community Consultative Group	Cllr. Mark Hall
Rother Association of Local Councils Representative	Cllrs. Paul Stapley and David Richards
Sussex Association of Local Councils	Cllrs. Andrew Dunlop, Martin King
Flood Wardens	Cllrs. Andrew Dunlop, Co-opted members District Cllr. Robin Patten, Brian Roberts
MOPP's & POPP's	Cllr. David Richards

Non-emergency Police number 0845 607 0999
PCSO Sharon Eldridge 07810 636992
 (Only answered when PCSO is on duty – otherwise any message left will be dealt with and monitored by local station and action taken if required or left for Sharon on her return to duty)
Please note that if you witness a crime in progress, you should immediately ring 999

Rother District Council (Marsham Ward)

Cllr. Roger Bird	87 Battery Hill, Fairlight, Hastings, TN35 4AL	01424 813636
	Email: cllr.roger.bird@rother.gov.uk	
Cllr. Robin Patten	5 Old Coastguard Cottages, Pett Level Road, Pett Level, TN35 4EH	01424 812479
	Email: cllr.robin.patten@rother.gov.uk	

East Sussex County Council

Cllr. Carl Maynard	The Burrow, 23 Baldslow Down, Westfield TN37 7NJ	01273 481576
	Email: cllr.carl.maynard@eastsussex.gov.uk	