



MAY HIGH TIDES AT RYE HARBOUR APPROACHES

Date	Day	Time (hrs)	Height (m)	Time (hrs)	Height (m)
1	Sunday	1007	3.0	2220	3.1
2	Monday	1039	3.1	2253	3.2
3	Tuesday	1110	3.2	2322	3.2
4	Wednesday	1139	3.2	2348	3.2
5	Thursday	-	-	1207	3.3
6	Friday	0017	3.2	1235	3.3
7	Saturday	0048	3.2	1309	3.2
8	Sunday	0123	3.1	1349	3.1
9	Monday	0207	2.8	1438	2.8
10	Tuesday	0302	2.6	1542	2.6
11	Wednesday	0419	2.4	1701	2.5
12	Thursday	0550	2.4	1818	2.6
13	Friday	0704	2.6	1928	2.8
14	Saturday	0806	2.8	2027	3.2
15	Sunday	0900	3.2	2121	3.6
16	Monday	0951	3.4	2213	3.7
17	Tuesday	1039	3.7	2302	3.8
18	Wednesday	1126	3.7	2350	3.8
19	Thursday	-	-	1211	3.7
20	Friday	0033	3.7	1253	3.7
21	Saturday	0116	3.4	1336	3.6
22	Sunday	0200	3.2	1421	3.3
23	Monday	0247	2.8	1507	3.0
24	Tuesday	0337	2.5	1557	2.6
25	Wednesday	0431	2.1	1652	2.4
26	Thursday	0534	2.0	1755	2.2
27	Friday	0647	2.0	1906	2.2
28	Saturday	0752	2.1	2006	2.5
29	Sunday	0842	2.5	2055	2.6
30	Monday	0923	2.7	2136	2.8
31	Tuesday	1002	2.8	2214	3.0

British Summer Time Add 1 hour to shaded area

pettparishnews@live.co.uk

BUSINESS ADVERTISING RATES

Annual Whole Page: £180.00 ~ Annual Half Page: £90.00

Annual Third Page: £60.00 ~ Annual Quarter Page: £45.00

Additional £6.00 per annum for inclusion on the PettNet web site

Contents

Badminton	7
Bike Ride	11
Christian Aid	14
Church Flower Show	15
Diary	20
Do you know?	16
Flicks	18
Gardening Club	35
Macmillan Summer Quiz	17
MOPPS	36
Nature Notes	5
Pett Memories	26
Parish Council Statement	28
Pett Church	31
Pett Methodist Chapel	29
Pett Parish Council	9
Recipe	7
Wedding Quiz	13
Quiz answers	17
Scouts	9
Short Mat Bowls	11
Sussex Wildlife Trust	23

Welcome

It is hard to believe we are now starting the second trimester of 2011, and we have already enjoyed a wonderful spring - hasn't the blossom been tremendous this year?

While you count down the days until April 29th (I hope you have received your copy of Pett Parish News before then), test your knowledge of the ins and outs of royal weddings past and future with a royal wedding quiz. Be warned: this is not for beginners. To know all these answers, you must have been paying attention. Answers are provided on page 17.

Continuing the Royal theme, a date for your diary - Flicks are showing the oscar winning film *The Kings Speech* twice on the 2nd June (see inside for details). Please note, the matinee showing attracts a special discounted price for those over the age of 65 (£1.00 per head).

Our village website www.PettNet.co.uk continues to grow - remember if you would like your club or organisation to have its own web page then contact Peter Wiggins on 813922 or email him on peter@pettnet.co.uk. This is your link to all that is happening in the village. It is instant, informative and very user friendly - log on, have a look and get involved in discussions and debates which affect village life, and keep up-to-date with the issues debated by the Parish Council.

Sarah

Copy for JUNE edition can be sent to us by email on pettparishnews@live.co.uk or delivered to Jackie Richards at Ambleside (815224), or Sarah Adams at Seawinds (812323), both on Pett Road. The deadline for copy is MID-DAY the 15th May and anything you can get to us before that date is greatly appreciated. Any copy after this time will be entered in the following month's issue. ADDITIONAL COPIES OF THE PETT PARISH NEWS

Don't forget, you can buy additional copies of the Pett Parish News at the Post Office or the Butchers. Alternatively, you can arrange for Postal Copies by contacting Brenda Kirkham on 815022

Whilst every effort has been made to ensure the accuracy of the information supplied herein, the editor cannot be held responsible for any errors or omissions. Unless otherwise indicated, opinions expressed herein are those of the authors of the individual articles and adverts, and they do not necessarily represent the views of the editor, nor can the editor uphold or recommend any advertiser here within this publication. E&OE

MARTINS OF HAWKHURST



Authorised
agents for

Neptune

notte

hardy

EFF

Miele

Hotpoint

LIEBHERR

Falcon

LACANCHE

britannia

GE

FRANKE

DESIGN - INSTALLATION - SALES - SERVICE

Tel: 01580 753 470

23 Cranbrook Road
Hawkhurst, Kent, TN18 4AZ

www.martinsofhawkhurst.co.uk
mail@martinsofhawkhurst.co.uk

Nature Notes

~ Avril Thurley

On March 22nd two notable events occurred. The



automatic vent in my greenhouse opened its window for the first time this year, and I saw the first Brimstone butterfly, a bright yellow male. Females are a pale greenish colour, rather easy to overlook. Since then, things have gone from good to better, with flowers and fruit blossom everywhere and birds busily nest building.

I never thought I'd say this, but I've actually seen a bit of modern technology which I love! Some friends have a camera in a nestbox, and can watch on their television as a pair of blue tits prepare their nest. I

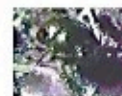


find this fascinating, and it could easily become a great time waster.

My own blue tits are busily housekeeping in the ancient box near my back door, and robins are going in and out through the glassless window of the exprievie, in which is an open fronted nestbox.

Down on the allotment I now have a fairly regular robin helping me to prepare the soil. There are all sorts of interesting creepy crawlies for him to inspect and sometimes gobble up. He was not around when a fellow

plot holder showed me a beautiful beetle, iridescent dark blue on top, purple underneath,



and apparently wearing little gardening boots. I think it was a violet ground beetle, but my knowledge of beetles is woefully inadequate. However, I am lucky to have a bee expert on the adjoining plot, which is a definite learning opportunity.

Some time ago I was given a little book, handwritten, containing some amazing remedies for garden problems, some of which I shall share with you from time to time. Here is a starter: "To destroy Tree Stems. They may be destroyed by pouring a saturated solution of saltpetre into the butt, and afterwards setting a light to the saltpetre, when the whole will be destroyed by fire."

Coffee Morning

~ Sally Williams



I would just like to say how lovely all the

daffodils looked in Pett this year, they seem to get better each year!

Thank you to everyone who joined us at the coffee morning last month, it was great to see you all again and we look forward to seeing you all on **Wednesday 4th May.**

DANCE / EXERCISE CLASS FOR BEGINNERS

Every Tuesday 9.30 am - 11.30 pm

Simple movement to music taken by fully qualified teacher

All ages and fitness levels welcome

Do you want to:

feel fitter

burn calories

increase flexibility

increase bone density

improve muscle tone in a relaxed and fun way?

Just turn up with a pair of good trainers
on your feet and loose fitting clothes - lycra optional!

For further details contact Mrs Robin Hutt

on 07792 951007 or 813182



An effective and practical way to access high quality, home based physiotherapy treatments

PHYSIOTHERAPY IN YOUR OWN HOME

Jessica Macdonald is a highly experienced HPC, CSP and AACCP registered physiotherapist, who will provide Physiotherapy and Acupuncture for Pain control, in your own home or workplace within the local area. Jessica is specially trained to: Relieve Pain, Improve Strength, Movement, Mobility and Function and Provide Preventative Health Care Advice.

Treatments include: Pain management | Therapeutic, Relaxation and Sports Massage | Acupuncture for Pain Control | Pre and post-operative treatment, and advice for Elective Orthopaedic surgery | Rehabilitation following Trauma | Mobilisation, Manipulation and Electrotherapy | Postural re-education and ergonomic advice | Personal training, Pilates and Lifestyle guidance.

To discuss your needs and to book an appointment for a home visit, please contact:

JESSICA MACDONALD
PHYSIOTHERAPIST

T: 01424 813053 M: 07795 562558

E: jecmac@gmail.com W: www.jessphysio.co.uk



Spicy Clam and Pork Paella

4 tbsp olive oil

400g pork leg, cut into chunks

2 garlic cloves, sliced

1 onion, finely chopped

200g chorizo sausage, cut into small pieces

400g paella rice

1 tbsp smoked paprika 400g can cherry tomatoes

1l hot vegetable stock

200g bag baby spinach

200g clams, cleaned



Heat half the olive oil in a paella pan or a large frying pan. Tip in the pork and cook for about 5 mins until lightly browned, but not cooked through. Remove from the pan, then set aside on a plate. Pour the remaining olive oil into the pan, then add in the onion, garlic and chorizo. Cook for about 5 mins until the onion is softened and the chorizo is starting to crisp and give off its oil.

Add the rice and paprika to the pan, then stir around for 1-2 mins until all the grains of rice are well coated. Can be prepared up to this point 1 day in advance and stored in the fridge.

Pour the tomatoes and any juices into the pan along with the pork and 900ml of the vegetable stock. Bring to the boil, reduce the heat, then let it gently simmer for about 20 mins until the rice is nearly soft. Place the spinach in a sieve, then pour over a kettle of boiling water so the leaves are just wilted. Arrange the spinach leaves in the pan along with the clams. Pour over the remaining 100ml vegetable stock, then cook for another 10 mins. By this time the clams should have opened (discard any that haven't) and the rice should be tender. Serve straight away from the pan.

Badminton for all ~ Philippa Strickland

If you have an old badminton racquet gathering dust in the attic, haven't played for 20 years. Think you are too old to give it a go or not to quick on your feet. Then come along to Pett Badminton Club and see the members. Skill and age are no limit, very friendly, uncompetitive group meet every Wed and Fri from 10.00 to 12.00 hours.

£2.00 a session includes refreshments and shuttlecocks.

We look forward to seeing you.

rx fisheries
SEAFOOD AT ITS BEST

retail outlet for Adams Bros est 1897

Fishmarket, Rock-a-Nore Road, Hastings Old Town, TN34 3DW.
Tel: 01424 445239

locally caught fish a speciality
suppliers of all your fish and seafood needs
freezer orders available - nothing too large or small
smoked and exotic seafood delivered daily
our polite and helpful staff are always on hand to advise and serve
most major credit cards accepted
open 7 days a week from until 5pm

SEAFOOD RANGE
we carry more than 50 ranges each day - for more details click onto the 'seafood range' heading above

- fresh fish
- frozen fish
- oil fish
- ready to eat fish
- frozen fish
- smoked fish

email peter@rxfisheries.co.uk

rx fisheries

retail outlet for Adams Bros est 1897

SEAFOOD AT ITS BEST
Fishmarket Rock-a-Nore Road

Hastings Old Town
TN34 3DW

open 7 days a week
8am until 5pm

for more information about our range, orders and recipes visit us at our **new website**

rxfisheries.co.uk or
peter@rxfisheries.co.uk
or call 01424 445239

...EVERYDAY ADVENTURE

VOLUNTEERS WANTED

Scout Leaders / Helpers 14th Guestwell Scout Group

Based in a stunning setting in Guestling, we are desperately seeking Scout Leaders and helpers to assist with the running of the Scout Troop. Indoor hall and lots of outdoor space to run activities along with access to woodland. Scouts are aged between 10 - 14 years old.

Full training is given along with support and assistance from the group and district.

If you are interested or would like further information, please contact:-

0844 415 2262

www.hastingscouts.org



THE TWO SAWYERS

Tel: 01424 812255



Open 12 noon - 11pm Monday to Saturday
12 noon - 10.30pm Sunday

Food served 12 noon - 2.30pm and
6.00pm - 9.00pm Monday to Saturday
and from 12 noon - 7.30pm Sunday.

Three en-suite B&B rooms available.

Pett Parish Council ~ Bob Hodgson Parish Clerk

Pett Parish Council agendas, minutes, planning reports and other correspondence can now be viewed on the Pett on the Nett website. The Council is most grateful to Peter for providing this facility for the Council.

Pett Exception Site - the latest Reports in respect of this project were made available at the Annual Parish Meeting. If you were unable to attend and would like a copy of the Report, please contact the Parish Clerk. The Local Connection Criteria for allocation purposes is also available on request.

Pett Play Area and Recreation Ground - the Parish Council requires someone to inspect the play area equipment and general recreation area on a weekly basis, using a check list from the parish office. The duty will also include emptying the litter bins on the Recreation Ground. It is envisaged that this should take no more than 1 hour per week. This is a paid position and further details can be obtained from Bob Hodgson, Parish Clerk on 01424-716232 or e-mail bob_pettpc@yahoo.co.uk



JOHN COX

Quality Building Work

*Inside and out
No job too large or too small*

PLASTERING, ROOFING
CERAMIC & MARBLE TILING
DECKING, PATIOS, ETC.

Call John on:

01424 439995
07792964210

FOR A FREE ESTIMATE & ADVICE



New PC's and peripherals
supplied and installed

Repairs and upgrades

Internet and networking

Domestic and commercial

Fast, friendly & reliable service

01424 812427
enquiries@covecomputers.co.uk

PETT SCAFFOLDING

ESTABLISHED 1982
- LOCAL TO PETT -

**DOMESTIC & COMMERCIAL
Supplied • Erected
Dismantled**

ALL AREAS COVERED AT
COMPETITIVE RATES
SAME DAY SERVICE OFTEN
AVAILABLE

SPECIAL RATES TO
LOCAL VILLAGES
Full Public Liability Insurance
- NO JOB TOO SMALL -

CALL ANDY FRENCH ON
079589 39382
51 Hughenden Road, Hastings



DAVE BRETT

DO A LOT!

**HOME AND GARDEN
MAINTENANCE SERVICES
PAINTING AND DECORATING
GRASS CUTTING AND HEDGE
CUTTING**

CALL DAVE for a FREE ESTIMATE
ON:
01424 435075
Mobile: 07963 110591

Rye Bay Coastguard and Pett Level rescue boat Annual Cycle Ride ~ Philippa Strickland

Pett Level Rescue Boat Association has again joined forces with The Coastguard to run this year's annual sponsored Cycle Ride which will take place on **Sunday 12th June 2011**. Start time between 8.30-9.30 hours

There will be the regular 30 mile round trip and a 15 mile course for those seeking a more leisurely ride or to cycle with youngsters. Both courses will start and finish at The Coastguard Station at Rye Harbour.

As in previous years the aim has been to raise as much money as possible for charity including Pett Level Rescue Boat, St Michael's Hospice and the Coastguard Association. If you want to join the ride without raising sponsorship, this is fine; all you need to pay is the entry fee which is only £5 and children under 16 go free but must be accompanied by an adult. Complementary refreshments are served at the checkpoints en-route and there will even be a welcoming cup of tea at the finish.

Further details of the event can be obtained from **Philippa Strickland** on 01424 814384 or mail pstrickl@waitrose.com

Previous participants will be e-mailed the entry/sponsorship forms. They will also be available at local shops and Pett Level Rescue Boathouse.

This is a fun event which always attracts a good turnout, whether it is the keen cyclists or those who want to get a bit of exercise and to fundraise for good causes.



GET ON YOUR BIKE

Pett Short Mat Bowls ~ Anne Heslop

Pett Short Mat bowls club finished their winter season on April 9th with the AGM and an in club tournament and social afternoon. We all enjoyed it, and the final bowling session will be on April 14th.

The club started in 2003, benefiting from a grant from the lottery, and we meet weekly in Pett village hall. The members come from Pett itself and also from nearby districts. During the year we have had enjoyable friendly matches with Rye and Pebsham short mat bowls clubs. We are always keen to retain our friendly atmosphere whilst encouraging our members' enthusiasm for improving their game.

Since we were recently able to expand our facilities, we now have some vacancies for new members. In September, at the beginning of the new winter season, we are going to have a social bowling afternoon when we shall be inviting anyone interested to come along to meet us and to try the game. We hope we shall see you then!



Fairlight Electrical Services

Locally based Part P &
JIB Registered Electrician
30 years experience
Small jobs welcome

For a friendly service and
a 'no obligation' quote,
please call David Stevens

☎ 01424 813269

Backed by NICEIC
Warranty and qualified to
the 17th edition IEE regs



Covering all
aspects of
electrical work,
including:

Rewires
New Installations
Outbuildings
Extensions
Lighting Design
Gate Automation
Extra Sockets
Extra Light Points
New Consumer
Units
Earth Upgrading
Smoke Alarms
Fault Finding
Periodic
Inspection
And Testing
PAT Testing
Telephone Points
Broadband Points
Garage Door +
Gate Automation

Funnell & Perring SOLICITORS

192-193 Queens Road Hastings
East Sussex TN34 1RG

*EXPERIENCED ADVICE IN A
FRIENDLY CARING ATMOSPHERE*

We specialise in:

Wills and Trusts	Conveyancing
Probate	Family Matters
Child Care Work	Court Work

Please contact us on
01424 426287/437081
for more information

email: law@funnellperring.co.uk

FLEAS, WASPS, BEES, RATS, MICE, MOLES, PIGEONS

ROTHER PEST CONTROL

**R.S.H. CERTIFICATED
&
General Property Maintenance**
Fencing – Brickwork
Roofing

Mr. A.D. Benn

Tel: 01797 226778
Mobile: 07730 174552

Wakehams Farm Shop



Pett Level Road
Fairlight
East Sussex

**OPEN DAILY
FOR FRESH PRODUCE,
CAKES, PIES, FRUIT JUICE,
FLOWERS, PLANTS, SHRUBS,
POTS, COMPOST.**

**PICK YOUR OWN
SOFT FRUIT & VEGETABLES**

TEL. 01424 814898



A lady who is
Passionate about gardening
Hither Green Cottage
Pett Road
Pett TN35 4HA

Ruth Attwell
Gardener

01424 813805 ~ 07988 809055

ruth-attwell4@sky.com

An honest and reliable lady gardener
who is creative & cares about gardens, will treat
your garden as her own.
All aspects of gardening, lawns, borders, weeding,
replanting, redefining of borders.
For a friendly, efficient & personal service which
offers more
than general maintenance

From simply weeding
to simply wonderful

See me on the Pettnet website

A A Farnes Electrical Contractor

Your local NICEIC part P
17th edition JIB
Registered electrician

Covering domestic
commercial &
industrial installations

**For all your electrical
requirements**

No obligation quote
Please call Alan Farnes
Home: 01424 813121
Mobile: 07967794749
Email: farnsy@hotmail.co.uk

Royal Wedding Quiz



Questions

(answers page 17)

1. What endearing mistake did Lady Diana make during her wedding ceremony with Prince Charles?
2. What was the subject William and Kate were studying at St. Andrews when they first met in 2001?
3. Prince Phillip was already a royal prince before his marriage to Princess Elizabeth in 1948. In what country was he prince?
4. When he marries on April 29, this will be the second time Prince William has participated in a royal wedding at Westminster Abbey. What was the first occasion?
5. What is the name of the conveyance that carried Princess Diana to St. Paul's Cathedral for her wedding?
6. Which royal couple was married at the Vatican?
7. Which royal couple bonded originally over their devotion to equestrian sports?
8. Which royal couple married when both partners were well past 30?
9. Who is the taller royal groom — Prince Philip or Prince William?
10. In what country did Prince William propose to Kate Middleton?





CHRISTIAN AID WEEK

May 15-21 2011

Plank

What is special about this year's Christian Aid Week?

As always, Christian Aid aims to help people out of poverty by giving them the skills and tools to improve their own lives.



For the people of Jinotega, in Nicaragua, coffee is their livelihood.

Christian Aid partner Soppexcca

offers credit to groups of poor farm labourers to establish themselves as coffee farmers and work as a cooperative.



Ten years ago when Soppexcca was established this seemed impossible, but now Soppexcca is a thriving collective of small co-operatives helping farmers produce good quality coffee, market it and put funds back into their own communities. It works with communities to understand their needs and empowers them to make their own visions a reality. These are dreams that the community once thought were out of reach.

Eladio Pineda is part of a group of poor farm labourers. The credit that Soppexcca gave them will be used to achieve the dreams which Eladio once thought out of reach: "I hope one day we will have a school on this land, clean water and latrines."

The money required seems quite small to us - e.g. £14 could buy enough coffee seeds to start one farmer on the path out of poverty. £2170 could pay for a processing plant which would allow many farmers to process the beans and get a better price. (Wouldn't it be exciting if our local community could raise that much?)

- We are following the **church's heritage** of working to help the poor. Christian Aid Week has run faithfully every year since soon after the Second World War. We are joining with over **30,000 volunteers** who give their time to deliver envelopes door to door, put on events, and be a part of this movement for change.
- In these **difficult financial times** the world's poorest people need our prayers and financial support more than ever. Christian Aid Week gives people the opportunity to be generous.
- We get **money for nothing!** A taxpayer's Gift Aid declaration on an envelope gives Christian Aid 25% extra, making even more development work possible in the world's poorest countries

Can you please help? Here are some opportunities:

- **May 8** – Christian Aid Service at Pett Methodist Chapel at 11.00 am, including videos illustrating Christian Aid's work.
- **May 14** – a fund raising Coffee Morning from 10am – 12 noon at "Paxstead", Pett Road – cakes, plants, bring & buy, raffle and sale of Traidcraft goods.
- **May 15-21** House to House envelope collection.

Thank you so much for whatever you can do.

Pett Church Flower Festival ~ Cathy Norris

UPDATE

Due to unforeseen circumstances the date of the **Pett Church Flower Festival has been changed to Sat 3rd and Sun 4th of September**, the title



is still the same which is a poetry theme, any ideas are still very welcome

(cnorri@hotmail.co.uk). We would be very grateful for more sponsors as this really helps towards making the flower festival the success it has always been.

If you would like to sponsor or have a dedication put on one of the arrangements please get in touch with Angela Hawksley on 812 705.

Also if anyone had some free time on that weekend perhaps you would like to help out on a stall, we have a list of stalls and time slots, so if you could spare an hour or maybe two you would be made very welcome. We are still looking for tombola prizes and we are running a Trash and Treasure stall, so any unwanted items that could be used for these stalls would be most welcome, they can be dropped off at Cathy Norris's (Upholsterers).



The next meeting of Pett WI will be held on Friday May 20th at 2.30pm in the Village Hall. Since this is a resolution meeting, there will not be a speaker in May.

PETT TENNIS CLUB

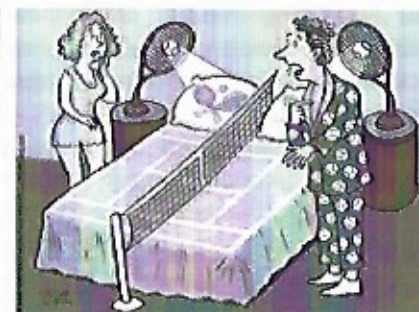
Open to everyone

Play any time – no need to book
Situated at Pett Recreation Ground
Annual subscription:

£24 junior & student ~ £40 adult
£100 Family

Contact:

Dennis Lanner ~ 01424 812430



"What do you mean I'm obsessed with tennis?"

DO YOU KNOW ?

John Taylor

Do you know about the "Green Man"?



The Green Man is one of the most ancient and most pagan of all symbols to be found in a Christian church. His origins are entwined with paganism, folk lore and superstition. He is a symbol of regeneration and is linked with rebirth and virility. He is strongly associated with the beginning of spring; a symbol of May time. Also known as The King of May, Jack O' the Green, John Barleycorn and even Robin Hood, the figure emerges as pre-Christian going back to the pagan Celts in the forests of ancient Britain dating back to 400BC. Much of prehistoric Britain was covered in trees and the Celts and Druids believed trees had souls and were revered as deities. The Druids planted and worshipped sacred groves and their magicians, warriors and healers prized these tree twig tops. When early Christianity became established its priests attacked the pagan beliefs cutting down large areas of woodland.

There are many examples, though, of the Green Man – despite his pagan hierarchy – to be found in churches across the land. The illustration in the centre above comes from a misericord in Ludlow parish church. May 1st has long been an important part of the annual calendar. The Celts celebrated May Day as Beltane; the Romans dedicated the day to the Goddess Flora and would go to the woods to cut a tree

and decorate it with ribbons and flowers: this is the origin of the May Pole. In the 16th and 17th centuries people in England would make garlands of flowers and leaves for the May Day celebrations. By the late 18th century the garland had become so big they could cover an entire man. This became known as 'Jack in the Green'.

In Hastings there were at least two groups who paraded a Jack in the Green until about 1889, but by the turn of the century the custom was rarely staged and stopped. However it was revived by the Mad Jack Morris Dancers in 1983 and Jack in the Green can be seen during the procession and celebrations on the May Bank Holiday accompanied by someone dressed as a 'bogie' or 'green man' as one of Jack's attendants.

The Green Man's face has also been depicted in numerous ways. Most often staring out of his mantle of green (as shown above), or alternatively, he's been shown frowning and grimacing as well as in a more jovial state where his enigmatic face is smiling.

Whoever he really was, the Green Man has always been surrounded by an air of mystery

*"I am the face in the trees' amid the
thickest leaves I am here and I'm there, I
am everywhere,*

*I'm both of myth and of lore, you have
never seen me before, but I watch you
see,*

Oh, you can never ever find me."



Macmillan Summer Quiz

~ Heather Godwin

This year sees a celebration of 100 years of Macmillan Cancer Support. To celebrate this centenary, a local Hastings Centenary Group is promoting and selling **The Macmillan Summer Quiz**.

It costs a minimum donation of £2, there are a hundred questions, and you have until the middle of September to finish it. The prize is 20% of the total takings - which could be quite significant!

All proceeds will go towards a new information and support Centre being built in Brighton, which will be specifically designed to provide an holistic service (information, advice, counselling, welfare benefits and dietary advice, a hair and wig service, and a cafe) in a non-clinical environment for people affected by cancer across the region of Sussex. The Centre is costing £3.7 million, so every penny helps.

**WE ARE
MACMILLAN.
CANCER SUPPORT**

Copies are being sold in the Pett Post Office or from me at 2 Brambletye, Pett Road, telephone number 813939.

Thank you for your support.

Royal Wedding Quiz

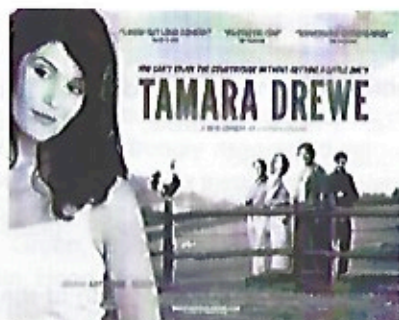
Answers



1. Lady Diana mixed up the order of Prince Charles' many names — Charles Philip Arthur George.
2. William and Kate studied art history at St. Andrews when they first arrived. William later changed to geography.
3. Prince Philip of Greece and Denmark was his original title.
4. Prince William was a miniature groomsman in the wedding of his uncle, Prince Andrew, to Sarah Ferguson in 1986.
5. Princess Diana arrived at St. Paul's in the horse-drawn "glass coach."
6. Lord Nicholas Windsor, son of the Duke of Kent and the Queen's cousin, married Croatian Paola Doimi de Frankopan at the Vatican in November 2006, with the Queen's blessing.
7. Princess Anne and her (former) husband Captain Mark Phillips were dedicated to the horsey sports, a passion handed down to their daughter Zara Phillips.
8. Prince Edward, the Queen's youngest son, married Sophie Rhys-Jones in 1999, when he was 35 and she was 34.
9. Prince William is 6-foot-3, while Prince Philip is approximately 6-foot-2.
10. He proposed while the two were visiting Kenya in October.

FLICKS FILM SOCIETY

Our last film, which we screened in April, attracted our largest audience so far this year and brought the total number of attendees since we started our society to nearly 4500. With this continuing level of support we are confident that we will be able to freeze our prices for yet another year. Hopefully many more folks will take advantage of this and will add to this success story by coming and seeing one of the following productions.



On the 5th May (election day) we will be showing the comedy drama, **Tamara Drewe** directed by Stephen Frears. The film is about an ugly duckling, who is followed by a handful of suitors after maturing into a sexy swan. Tamara Drewe (**Gemma Arterton**), was born and raised in Ewedown, a quiet community on the outskirts of London dominated by a writers' colony run by Nicholas

Hardiment (**Roger Allam**), a best-selling novelist who specialises in crime fiction, and his wife Beth (**Tamsin Greig**). When Tamara left Ewedown, she was a plain and awkward teenager, but when she returns home for the first time in years, the locals are surprised to discover that time (and a nose job) has turned her into an attractive and alluring woman, and she's gained a share of money and fame thanks to a successful newspaper column. Returning to refurbish the home of her recently deceased mother, Tamara soon finds herself pursued by three men from her past - Andy Cobb (**Luke Evans**), her former boyfriend; Ben Sergeant (**Dominic Cooper**), the swaggering drummer with a local indie rock band flirting with larger success; and Nicholas (**Roger Allam**), who is chronically unfaithful to his wife and sees an opportunity with the neighbourhood girl who was infatuated with him in her teens.

At long last we are able to confirm that we will have secured a copy of the Oscar-winning film **The King's Speech** and will be offering two opportunities to view it on the 2nd June, either at 2.30 pm or at our normal time of 7.30 pm. The afternoon matinee will be principally aimed at older folk to enjoy the film and be able to return home, before night time. However, all are welcome. As you may well be aware *The King's Speech* is the tale of

Elizabeth II's father, George VI (**Colin Firth**) and his remarkable friendship with maverick speech therapist Lionel Logue (**Geoffrey Rush**). Fascinating, moving and often humorous it charts the personal relationship that developed between England's reluctant King George VI, plagued by a nervous stammer, and his irreverent Australian speech therapist.

As the second son of George V, Prince Albert "Bertie" was not expected to ascend to the throne, but when his brother Edward abdicates to marry American Wallis Simpson, Bertie, as his successor, is crowned King.

George becomes King as radio is taking off as a mass medium and the Second World War looms. Thrust into the international spotlight he must speak not only to the nation but to the people of the British Empire, across the world. His wife, Queen Elizabeth (**Helena Bonham-Carter**) - the future Queen Mother - is tireless in her belief in him. Having tried all the traditional doctors she engages unorthodox outsider, Logue, to help him find a voice that can inspire a nation on the brink of war.



Please do not forget, all are welcome to join our Society and enjoy and evening watch a film for as little as £4.00 per show with like-minded people in the local environment of Pett Village Hall. If you care to know more, please email me on chris@saintfamily.net or telephone on 813047. All films, other than our special afternoon show on the 2nd June, start at 7.30 pm on the first Thursday in the month with refreshments served from 7.00 pm.

We look forward to seeing you.

Chris Saint and the Flicks Team.

remember www.PetNet.co.uk your village website

PARISH DIARY – May 2011

VH Village Hall – RG Recreation Ground – NBC New Beach Club

Sunday 1 st	Boathouse	VH	10.30 am
Monday 2 nd	Boathouse 'Bingo'	Two Sawyers	7.30
	Quiz Night	NBC	8 pm
Tuesday 3 rd	Yoga	VH	9.30 am
	Dance & Exercise Class	VH	11.30 am - 1.15 pm
	Pilates	VH	6 pm
	British Legion	VH	7.30 pm
	Quiz Night	Two Sawyers	8.30 pm
Wednesday 4 th	Coffee Morning	VH	10 am
	Badminton	VH	10 am
	Mobile Library	Church	10.10 am
		Chick Hill	10.50 am
		Smuggler	11.20 am
Thursday 5 th	Elections	VH	
	Flicks in the Village	VH	7.30 pm
Friday 6 th	Badminton	VH	10 am
	MOPPs	Fairlight VH	10.30 am
	Latin American & Ballroom Dancing	VH	2 pm
Sunday 8 th	Boathouse	VH	10.30 am
Monday 9 th	Flowerpots	VH	9.30 am
	Quiz Night	NBC	8 pm
Tuesday 10 th	Yoga	VH	9.30 am
	Dance & Exercise Class	VH	11.30 am - 1.15 pm
	Pilates	VH	6 pm
	Garden Club	VH	7.30 pm
	Quiz Night	Two Sawyers	8.30 pm
Wednesday 11 th	Badminton	VH	10 am
Friday 13 th	Badminton	VH	10 am
	MOPPs	Fairlight VH	10.30 am
	Latin American & Ballroom Dancing	VH	2 pm
Sunday 15 th	Boathouse	VH	10.30 am
Monday 16 th	Flowerpots	VH	9.30 am
	Quiz Night	NBC	8 pm
Tuesday 17 th	Yoga	VH	9.30 am
	Dance & Exercise Class	VH	11.30 am - 1.15 pm
	Pilates	VH	6 pm

	Parish Council	VH	7.30 pm
	Quiz Night	Two Sawyers	8.30 pm
Wednesday 18 th	Badminton	VH	10 am
	Mobile Library	Church	10.10 am
		Chick Hill	10.50 am
		Smuggler	11.20 am
Friday 20 th	Badminton	VH	10 am
	MOPPs	Fairlight VH	10.30 am
	Latin American & Ballroom Dancing	VH	2 pm
	Women's Institute	VH	2.30 pm
	Pett Nats	VH	7.30
Sunday 22 nd	Boathouse	VH	10.30 am
Monday 23 rd	Flowerpots	VH	9.30 am
	Quiz Night	NBC	8 pm
Tuesday 24 th	Yoga	VH	9.30 am
	Dance & Exercise Class	VH	11.30 am - 1.15 pm
	Pilates	VH	6 pm
	Quiz Night	Two Sawyers	8.30 pm
Wednesday 25 th	Badminton	VH	10 am
Friday 27 th	Badminton	VH	10 am
	MOPPs	Fairlight VH	10.30 am
	Latin American & Ballroom Dancing	VH	2 pm
Tuesday 31 st	Yoga	VH	9.30 am
	Dance & Exercise Class	VH	11.30 am - 1.15 pm
	Pilates	VH	6 pm
	Quiz Night	Two Sawyers	8.30 pm

If you want your special events or regular meetings included in the Parish Diary, please notify me in writing or the Editor by email ~ a programme or fixture list is fine.

Avril Thurley, Rectory Cottage

CHURCH SERVICES:

Sun 1 st May	9.30am – Parish Communion, St Mary & St Peter
Sun 8 th May	11.00am – Christian Aid Service – Joint service at Pett Methodist Chapel
Sun 15 th May	8.00am – Holy Communion, St Nicholas, Pett Level
Sun 22 nd May	9.30am – Parish Communion, St Mary & St Peter
Sun 29 th May	United Benefice Communion – St Mary & St Peter – Rogation Sunday



B K Joinery

Bespoke Joinery & Cabinet Makers
Replacement non standard
Doors, Windows and Sashes

Bookcases, Cabinets, Bedroom Furniture
Individual Kitchen Units
Built-in or freestanding

Brian Patterson ☎ 01424 814670



GARDENER PROPERTY CARE (Est. 1993)

Replacing, Renewing & Cleaning

- Guttering
- Fascia & Soffits
- Moss Removal & Roof Treatments
- Roof Repairs & Insulation
- UPVC Whitening
- Experienced - Reliable - Professional,
- Complete re-roofs and all types of repairs carried out.



Save money during credit crunch - insulate your roof to save on heat loss with thermo insulation
Call for a **FREE** quotation & competitive prices

Office: 0800 118 2489 or Mobile: 07855 604397



A MAN THAT CAN ...

**I CAN TACKLE ANY ODD JOBS AROUND THE HOME OR GARDEN
THAT YOU MAY BE UNABLE TO DO YOURSELF ANYTHING FROM A
SQUEAKY HINGE TO PUTTING UP SHELVES TO ASSEMBLING FLAT-PACK
FURNITURE OR A GARDEN SHED
I AM MATURE, HONEST, RELIABLE
AND HAVE BEEN CRB CHECKED**

REFERENCES AVAILABLE

CALL FOR A FREE ESTIMATE ~ NO JOB TOO SMALL

CHRIS SHERWIN, PETT VILLAGE

TEL: 01424 813825 MOBILE 07875 109215

50 Years of Conserving Wildlife in Sussex

~ Mike Russell

For any organisation, celebrating a 50th Anniversary is both a time for reflection and looking forward; reflecting on what has been achieved over half a decade and looking forward to the challenges that undoubtedly have to be faced in the future. This is what the Sussex Wildlife Trust will be doing in 2011.

Back in 1961, the loss of our wildlife and habitats was alarming. This was the time when environmental concerns were coming to the fore. 'Silent Spring' by Rachel Carson was a year away from being published and many county wildlife trusts, including Sussex, were formed to try and do something to stem the decline of wildlife in their county.

For the first five years the Sussex Naturalists Trust, as it was originally known, was effectively homeless but in 1966 the then owner of Woods Mill just south of Henfield donated the buildings and 15 acres of surrounding land to the Trust, with the freehold passing to them two years later. The Trust now had a base.

In those early years the Trust was run entirely on a volunteer basis but the acquisition of Woods Mill led to the employment of a warden, their first paid employee. Fifty years on the Trust has a professional staff but even so it is still essentially a voluntary organisation and would not

be to achieve anything like it does without the expertise, enthusiasm and input of its volunteers.

My personal involvement has been for about half the lifetime of the Trust, arriving as we did in 1985 when I took up the position of Woods Mill Warden. It didn't take long to absorb the special feel of Woods Mill that seems to permeate most people that become involved with the reserve either as a member of staff, volunteer or visitor. My wife and I lived at Woods Mill for eight years. It was a great place to bring up children, our boys being three and five when we arrived, and the experience certainly shaped my son Liam's life - he is now an ecologist and has recently set up his own consultancy.

In 25 years Woods Mill has changed. It no longer has a resident warden, there are now two classrooms and the reserve has increased in size from 15 acres to 42 acres, with the recent acquisition of two new fields. However, the essence of Woods Mill has not changed and still remains the heart and the soul of the organisation.

But the Sussex Wildlife Trust is so much more than Woods Mill. It now owns and manages 32 nature reserves amounting to over 3,500 acres of wildlife habitat, some of it the best in Sussex, and over the years has fought hard to save some of the best wildlife sites in the county such as Ebernoe Common, Amberley



Wildbrooks and Pevensey Levels. These reserves however can only act as a reservoir for species; most wildlife doesn't live on nature reserves it tries to survive in the wider countryside and urban areas and it is here that life has become increasingly difficult, particularly over the last 50 years.

That is why our work with people is an equally vital part of what the Trust does. Through our people and wildlife work such as the schools programme, over 20,000 children attend Woods Mill and Seven Sisters Country Park every year. In addition, our community engagement work, courses and events and landowner advice, encourages people to enjoy the wildlife and countryside we still have in Sussex. Our aim is to help them understand why it is so important and vital to their own lives and how to take action to conserve it.

One of the most encouraging aspects of the last ten years is that people are becoming aware, concerned and engaged with the world around them, highlighted by the fact that Trust membership has now topped 32,000, but the pressure on our wildlife hasn't gone away, in fact it's increasing. The recent budget included the news that planning regulations are about to be relaxed which will undoubtedly put further pressure on already threatened wildlife.

Most people I'm sure, recognise they live in a beautiful county, but we can't take it for granted and the

threats, though they may be different, for the next 50 years are even more challenging than the last 50 years; there is still much to do by all of us.

The Sussex Wildlife Trust ~
www.sussexwt.org.uk

Letters

I am writing to thank the residents of Pett for their generous donations of furniture, clothing and bric a brac etc, to HARC Charity Shops. We have many regulars who donate from the village and we are most grateful for the support shown, since we began to advertise in the magazine. We are always in need of quality goods to sell in our shops, not only to raise much needed funds for our Charity but also to help people, who don't have much money, to purchase reasonably priced items. A donation to HARC shops helps in so many ways and your support is greatly appreciated. Once again a big thank you to the residents of Pett. You can contact us any day except Sunday to arrange for our driver to collect your unwanted goods by calling 01424 720500 or 722164.

Sandra Lewis
HARC



THE BUTCHERS SHOP

PETT ROAD, PETT

(01424) 812148

Personal Friendly Service

*Free Local Delivery Service
Fridays & Saturdays*

Quality Scottish Beef
Prime Pork
English Lamb
Home Cooked Ham
Seasonal Meats
Barbeque Ideas
Delicatessen

Traditional Home made
Sausages & Burgers

**Fresh Bread & Milk
Saturday Newspapers**

FENCING

**ALL TYPES OF FENCING
SUPPLIED AND ERECTED**

25 years experience - examples of our work throughout the village

For free estimates and advice contact



JOHN OSBORN

Pett 01424 813564 / Mobile 077514 92821

Also Hedge Cutting
Tree Surgery
Mowing
Garden Clearance

OUR LOCALITY IS OUR GUARANTEE



NEED A PLUMBER?

Ray Barden

Plumbing & Heating
01424 812551

ALL ASPECTS OF PLUMBING &
HEATING UNDERTAKEN

40 YEARS EXPERIENCE IN PETT AND
SURROUNDING VILLAGES

No job too large
or too small



HARC CHARITY SHOPS

Welcome Your
Unwanted Items
Including Furniture

Free collection
But please no refuse



01424 720500/722164

Mon-Sat 9.30 - 4 pm
Registered Charity
1083566

My memories of Pett ~ Tony Turner, Nutfield, Surrey

My place of birth was Spring Field in Watermill Lane, Fairlight, and I was educated in the main at Pett school from 1939 to 1946. I managed to get to Rye Secondary for the remainder, leaving school at 14 to work on the land.

Walking home from school in those days was very exciting with all the war things going on around us. One incident I recall is as follows. All who lived to the West of Pett had to pass the house named Fairlight End. Just before reaching this house on one occasion we were stopped by a police man, we waited a while then an army officer came marching towards us. A discussion between the two men resulted in the policeman saying the girls must go back to the garage, walk through the field and come out at the blacksmiths. The boys had to keep on the road, look straight ahead and "DO NOT" look to the right. Being a young lad I and others I am sure did look, we saw several dead soldiers partly covered with a tarpaulin. A Beech tree which stood beside Fairlight End was badly scarred; it seems a Bren Gun Carrier had hit the tree killing all of the occupants. I do not know if they were attacked from the air, we did have many such incidents. The interesting fact is the soldiers were lying next to the entrance to Petts new village hall; the original hall erected in remembrance of Captain Dennet if my memory serves me well. The new hall also, to me at least, will be in memory of these soldiers, who with my own eyes I saw resting there. Thanks to them and many more, we survived to tell the story. May they rest in peace. The next time you drive into the new hall maybe you could give them a thought.

Some of my school friends will not know of this as they were evacuated from Pett, therefore our memories of 1939-45 are quite different. For the children those days were good, our mums and dads had all the worry of the situation, we still looked for the first migratory birds including the first Cuckoo. Pett to me will always be home. I love it lots.



Judy Dench & Tony Turner



The last 'Sussex Wagon'



Pett Home Guard

The last 'Sussex Wagon' made by Barden's of Pett with my late brother Alan holding the lead horse Blossom, and the late Charlie Barden holding the shaft horse Dobbin. I believe the photo was taken June 9th 1944. I stand to be corrected on this. The wagon was made for H. Smith, Wakehams Farm, Fairlight.

- J. Gardener - Window cleaning

Professional,
Reliable and Insured
Residential
& Commercial

Frames and Sills included



Office: 0800 118 24 89

Mobile: 07855 604397

- Est. 1993 -

PODIATRY & CHIROPODY CLINIC

(formerly called The Chiropractic
Clinic)

63a CINQUE PORTS STREET,
RYE

TEL: 01797 224472

NOW OPEN EVERY WEEK DAY

for treatments of foot pathologies
Each Chiropractor and Podiatrist is
fully qualified and registered with
the Health Professions Council

HOME VISITS AVAILABLE
TO THE HOUSEBOUND

PARKING NEARBY



hastings furniture service

registered charity number 1006257

Do you have household furniture or electrical items in good
condition that you no longer need?

Reusable donations collected free—throughout Hastings & Rother.

- Help local low-income households furnish their homes
- Prevent reusable items filling up landfill sites
- Support training for local unemployed people

Full House Clearance Service: free quotation visit

Our store at 6-10 Dorset Place, Hastings is open Monday—Saturday

www.hfs.org.uk

01424 44 11 12

P.J. Turner

ALL ASPECTS OF
TREE WORK
CONTRACTOR

MOWING – LOGGING
FENCING

FREE TELEPHONE
ESTIMATES 01424 812604

Statement on behalf of Pett Parish Council ~ Bob Hodgson, Parish Clerk

Pett Exception Site Project

In the last issue of the Parish News two articles were published concerning the proposed Pett Exception Site Project.

Firstly, the Parish Council wish to record their deep regret that the publication of the Housing Survey Needs Report caused offence, anger and distress to the residents of The Oak Fields. The Report was published, together with the Site Criteria Assessment Report, as a direct result of the Council having received a request under the Freedom of Information Act 2000 for the publication of all information pertaining to the proposed Exception Site Project. The Council had given assurances at various Council meetings that when the information was available for release it would comply with the Act. The views expressed in the Housing Survey Needs Report are those of one or two individuals and in no way represent or reflect the views of the Parish Council.

The Parish Council is only able to claim exemption from the issue of information on two possible grounds; Section 43 - Commercial interests and Section 22 - Information intended for future publication. On the first

point, there clearly is no commercial interest consideration. The second point has been referred to at Council meetings and that is why on occasion it has been stated that the information will be released when appropriate. The Parish Council is only able to release information when clearance is received from Rother District Council and Action in Rural Sussex.

This explanation does not remove the comments made in the Report but hopefully explains the situation faced by the Parish Council in being required to comply with the Act; that is, the whole document is required to be released without any alterations or editing.

The Parish Council also wish to make it clear that Jackie and Sarah who edit and produce the Parish News should in no way be held accountable as they only published what had been sent to them. They provide an excellent service to the community, as volunteers, and it would be quite unfair to suggest they have any responsibility in this matter.

It is most regrettable that a couple of unfounded and unjustified remarks in a Survey have caused such distress within our community and the Parish Council consider that the remarks are wholly unrepresentative of the community of Pett.

Pett Methodist Chapel ~ Keith Miller

A new stained glass window was installed at Pett Methodist Chapel just before Christmas and it looks lovely. This cross-shaped window was specially designed and made for us by Alice Wilcock (daughter of Pen Wilcock, our former minister) and it replaces a window made from simple glass blocks which alas, was beginning to look rather jaded, and reminded me of the sort of thing one might find in a public toilet.

Alice is exceptionally modest about her talents, and so I persuaded Pen to tell us about the thinking behind the design. This is what she said



"It is an abstract design that incorporates two concepts working in counterpoint to each other. The first

concept is geographical: as you look at the window you can see the pointy shapes representing the jaunty sails of boats, and the flowing blue of hill streams and the sea and sky, and the clarity of air and cloud, and also the shapes of hills and the red and yellow of earth and harvest, sand and sunset. the geography of Pett is celebrated in this window.

The second concept is theological: the red of saving blood and the blue of the living water of baptism; the gold of glory and the clarity of insight

and purity of heart. the fire of Spirit and the jagged suffering of Calvary, the release of freedom and the flow of grace - it is all there in the window; beautifully, compactly, a concentration of ideas that unfolds in the imagination as you gaze up at it. It is designed with the direction of the light in mind - for eastern light is different from northern light or western or southern light; the same colours will not do. As the morning light floods through it, interacting with the colours, it speaks, it lives."

Should you wish to see the window more closely, please come to our forthcoming Art and Flowers weekend on June 18 - 19th.

Pett Level Preservation Trust ~ Rosemary Moon

The Friends of Pett Level Preservation Trust will hold their Annual Meeting at Winchelsea Beach Community Hall on Friday May 13th at 7.30pm.

In addition to a raffle, Colin Page will show pictures and give a talk on 'Wildlife of the Seashore'

All are welcome - **free admission**



Pink Painters a professional finish every time

* a family business est. 2002 * free estimates at competitive rates

* all aspects of exterior and interior decorating undertaken

clients have told us how they value our

- | | |
|--|--|
| <input checked="" type="checkbox"/> attention to detail | <input checked="" type="checkbox"/> cleanliness and tidiness |
| <input checked="" type="checkbox"/> reliability and experience | <input checked="" type="checkbox"/> professional approach |

for more information call Collette or Jane
07712530824 0784894676 01424 812245

Flat Roof Problems?

B. WALKER FLAT ROOFING SPECIALIST

Mastic Asphalt and Felt Roofing

35 years experience

All work guaranteed

Free Estimates at Competitive Prices

01424 812245

07802 885476

Red Briars, Pett Road, Guestling, Hastings, East Sussex, TN35 4EX



Pett Church ~ Meriel Deasy and Angela Hawksley Churchwardens

Many people in Pett have contributed time and money to the costs of maintaining the church building in Pett. Much gratitude is due to them. So we thought everybody deserved an update on the building and also on the running of the church.

The Church Building

During 2010 a number of repairs and improvements were carried out to the church. The money was raised by the Friends of Pett Church



from two jumble sales and the Flower Festival. The work included: electrical work; new louvres in the tower; woodworm treatment; boiler house roof. The work on the clock is almost complete. Scaffolding will shortly be put up to enable new gutters to be installed. In addition, the churchyard has been well cared for. We are very grateful to the Parish Council for their contribution.

There is a group of very talented flower arrangers who regularly decorate the church.

Cleaning is now done monthly by a group from the congregation.

Church Organisation

The Parish of Pett which contains the two churches of St. Mary and St. Peter in Pett and St. Nicholas in Pett Level still forms part of the United Benefice of Fairlight, Guestling and Pett but a decision has been made to dissolve the Benefice as soon as the Diocese can carry out the legal requirements to do so. Pett will then form a United Benefice with Fairlight only and Guestling will join with Westfield. This change is as a result of the Pastoral Survey carried out in the Deanery of Rye (the group of 17 parishes surrounding Rye) and the need to reduce the number of paid clergy within the Deanery. It was recognised that the United Benefice of the three Parishes was too heavy a burden for one priest.

The Incumbent Revd. Bernard Crosby retired on 31st January 2010. The Parochial Church Council immediately together with the representatives of the other two parishes in the United Benefice began the process involved in the selection of a new Incumbent. We are still without an incumbent but it is not unusual to be without an incumbent for some time after a retirement. Services are still held regularly.

There are currently 48 names on the Parish Electoral Roll. Average attendance at St. Mary and St. Peter was 22 and at the monthly 8am services at St. Nicholas the average attendance was 18.

Our Treasurer Jillian Green deals with the finances. The income is from Church Collections and fund-raising (also, the Parish Council payment for the churchyard). The Church pays a sum each month to the Chichester (via the Rye Deanery).

Church services

Throughout the year a pattern of services has emerged.

On the **first** Sunday in each month at 9.30am there is a service of Parish Communion (Common Worship) conducted by Revd. David Wotton (a retired priest who lives in St. Leonards).

On the **second** Sunday there is a joint service with the Methodist Church in Pett (alternately at the Methodist Chapel and St Mary and St Peter's).

On the **third** Sunday there is Holy Communion (Book of Common Prayer) at St. Nicholas at 8am and on the **fourth** Sunday Revd John Burgess conducts a Parish Communion service at 9.30am. On a **fifth** Sunday is a United Benefice Service.

A number of special services are held throughout the year. Sea Sunday is celebrated by a service



on the beach outside St. Nicholas. Carol singing round the village at Christmas 2010 had to be cancelled because of ice and snow and so a retiring collection was made at the Christmas Eve Christingle Service for Surviving Christmas and raised £140. The total raised for Christian Aid was £1501-70. The proceeds of sale of the Harvest Produce after the Harvest Festival (£30) were sent to the Hastings Street Pastors. In addition, in 2010 there was a fund raising concert in the church. This year the Flower Festival will take place on 3rd/4th September.

Threefold Church Magazine

Now that there are changes to the Benefice and in the absence of an incumbent we have decided that the next edition of Threefold will be the last. It was always difficult for us in Pett to have to cope with reading two magazines!

It would be great if you could try coming to a service at Pett or Pett Level!

Independent Financial Advice ROCK FINANCIAL ADVISORS LLP

Investment & Pension Advice
Mortgage
& Equity Release Consultants

For a free financial review
Please call

01424 858200

Rock Financial Advisors LLP
The Innovation Centre,
Highfield Drive,
St Leonards-on-Sea TN38 9UH

Home Visits Available

P&S ELECTRICAL

Your complete electrical answer

Providing a professional, flexible, friendly and reliable service for all of your domestic electrical needs

No job too small

We promise to:

Provide you with a quotation within 48 hours of your call
Offer flexible working including weekends/evenings at no extra charge
All work will be fully insured

All work completed in accordance with 17th Edition Regulations

Contact us today on

07789 040431

pandselectrical@yahoo.co.uk

The Lookout FIVE STAR BED & BREAKFAST



THE LOOKOUT



Chick Hill – Pett

Two self contained on-suite rooms
Award winning multi choice breakfast

Free WiFi & Internet

Multi channel TV

Mini Fridge

Ample secure off road parking

Enjoy breakfast on the Patio or Sun lounge taking in the superb sea view

WWW.lookoutbb.co.uk

Please visit our web site for all information & booking enquiries or telephone any time

01424 812070

Contact - Stuart Ware
t: 01424 813332
e: studio2@brooksandware.com



www.brooksandware.com

- Site Appraisals
- Outline Designs
- Planning Applications
- New Build and Renovations
- Extensions
- Consultation
- Construction Works
- Residential projects
- Sports Facilities
- Commercial
- Hotels and Bars



NEW BEACH CLUB

Pett Level Road, Pett Level, East Sussex TN35 4EH
01424 812080

Beach Club Special OAP Fish & Chips only £3.50

Wednesdays 12.00 - 12.30pm

All are welcome

Every Monday 8 pm ~ Quiz night with Guest Host

First Tuesday Monthly 7.30 pm ~ British Legion meet

Remember! Book the Club for all your party needs. No venue charge for Members

Take Away Menu now available to eat at home or on the beach

Cafe opening times: Mon & Tue 12 - 2.30

Wed, Thurs & Fri 12 - 2.30 & 6 - 8.30

Sat 12 - 3 & 6 - 8.30 Sun 12 - 4

**Meeting room available for local organisations at no charge
(subject to availability)**

Gardening Club - April ~ Sue Dengate

We kept our fingers crossed and it did not rain on our visit to Rother View Nursery.

Wendy and Ray Bates had prepared a quiz for those brave enough to give it a go, but with such a display of plants and shrubs to look at, it would be fair to say that a great deal of time was given up to viewing and buying some of the wonderful items on offer. Not to mention some wine and nibbles to help things along.

It was a lovely evening, and the display of camellias and other 'special' plants were a joy to see.



Although we understand that the lack of rain is causing some concern - it did mean that we had an opportunity to see everything on offer. Wendy was also on hand to give expert advice and answer the many gardening questions put to her.

Our thanks to Wendy, Ray and Emily for such an enjoyable evening.

Next month our meeting will be on Tuesday, 10th May 7 30pm. in the Village Hall and is our Annual fund raising Plant Sale and a very special event for the club - so please come along and please bring any plants extra to your requirements so that they can be put



into the sale. No doubt you will find something to buy for that little space still

left unplanted in your garden!
See you there!

"Don't knock the weather: nine-tenths of the people couldn't start a conversation if it didn't change once in a while."

- Kin Hubbard



"The world's favorite season is the spring. All things seem possible in May."

- Edwin Way Teale

Opposite is a basic time table of the 347 and 344 bus routes. For a more detailed version contact:

eastsussex.gov.uk

Coastal Coaches - 01797 253176

www.coastalcoaches.com

Stagecoach - 08702 433711

www.stagecoachbus.com

(This information was correct at the time of going to print but alterations can occur)

JEMPSON'S BUS - 'Hail & Ride' to the Superstore. Every Friday calling at Allards 09:15 and Chick Hill (top) 09:20 and departs Jempson's at 11:30. Nominal charge of £1 return.

There is no need to walk to the stops as the bus will stop when hailed if it is safe to do so.

M.O.P.P. ~ MARSHAM OLDER PEOPLES PROJECT

CENTRE FOR OLDER RESIDENTS OF
Fairlight, Pett, Guestling, Three Oaks & Winchelsea

Meeting at Fairlight Village Hall, Broadway, every Friday at 10.30 - 3.30 pm

Lunch, transport, exercises, health information and advice, together with visits from Podiatry and other health services, visits from local Farm shop, clothing shops, and social activities.

Cost: £4.50 To include lunch and refreshments

For further information or to arrange a visit one Friday ring **Sheila Thomas**

co-ordinator on 01304 219767 or sheilaspan@btinternet.com or Sylvia Gutsell 812544

Home nail cutting service available ~ contact Sheila Thomas

MOPPs TRANSPORT - a bus will be coming through Pett each Friday to pick up outside Pett **POST OFFICE** around 10 am, then outside the **Royal Oak** at about 10.10 am. If you are unable to get to either of these pick-up points and need to be picked up from your home then please ring Sheila on 01304 219767 or Sylvia



6 th May	Choir and Sing a Long Eye Concern visiting for glasses adjustment & tests
13 th May	Entertainment Eric and Terry Bossard Introduction to Natural Health Therapy by Terry
20 th May	Keith Osborne - Music for Health
27 th May	Eye Concern optician - bingo

347 Bus Time -Table

Pett - Hastings								
Pett (Chick Hill)	0819	0826	0959	1059	1159	1259	1439	1549
Pett (Church)	0822	0829	1002	1102	1202	1302	1442	1552
Guestling (School)	0829							
Guestling (White Hart)	0834	0834	1007	1107	1207	1307	1447	1557
Ore (Kings Head)	0838	0848	1011	1111	1211	1311	1451	1601
Ore (Christ Church)	0840	0840	1013	1113	1213	1313	1453	1603
West Hill (Whitefriars)	0845	0845	1018	1118	1218	1318	1458	1608
Hastings (Harold Place)	0849	0849	1022	1122	1222	1322	1502	1612
Hastings (Rail Station)	0851	0851	1024	1124	1224	1324	1504	-
Hastings - Pett								
Hastings (Rail Station)	0928	1028	1128	1228	1408	1510	1510	1735
Hastings (Queens Road)	0930	1030	1130	1230	1410	1515	1515	1740
West Hill (Whitefriars)	0935	1035	1135	1235	1415	1520	1520	1745
Ore (Christ Church)	0940	1040	1140	1240	1420	1525	1525	1750
Ore (Kings Head)	0942	1042	1142	1242	1422	1527	1527	1752
Guestling (White Hart)	0946	1046	1146	1246	1426	1531	1531	1756
Guestling (School)						1534		
Pett (Church)	0951	1051	1151	1251	1431	1536	1542	1801
Pett (Chick Hill)	0954	1054	1154	1254	1434	1539	1545	1804

344 Bus Time-Table

Hastings - Rye																
Hastings (Stn Int'change)	0750	0850	0950	1050	1150	1250	1350	1450	1520	1520	1630	1730	1820			
Hastings (Breads Place)	0752	0852	0952	1052	1152	1252	1352	1452	1522	1522	1632	1732	1822			
Old Town (Cutter)	0754	0854	0954	1054	1154	1254	1354	1454	1524	1524	1634	1734	1824			
Ore (Christchurch)	0800	0900	1000	1100	1200	1300	1400	1500	1530	1530	1640	1740	1830			
Guestling (School)									1534							
Fairlight Glen	0803	0903	1003	1103	1203	1303	1403	1503	1533	1543	1643	1743	1833			
Fairlight Cove (Hotel)	0809	0909	1009	1109	1209	1309	1409	1509	1539	1549	1649	1749	1839			
Pett Level	0815	0915	1015	1115	1215	1315	1415	1515	1545	1555	1655	1755	1845			
Winchelsea (Smugglers)	0819	0919	1019	1119	1219	1319	1419	1519	1549	1559	1659	1759	1849			
Winchelsea Beach	0821	0921	1021	1121	1221	1321	1421	1521	1551	1601	1701	1801	1851			
Winchelsea (Bridge End)	0824	0924	1024	1124	1224	1324	1424	1524	1554	1604	1704	1804	1854			
Rye (Rail Station) arrive	0830	0930	1030	1130	1230	1330	1430	1530	1600	1610	1710	1810	1900			
Rye - Hastings																
Rye (Rail Stn) arrive	0705	0755	0755	0825	0925	1025	1125	1225	1325	1425	1525	1705	1805			
Rye (Rail Stn) depart	0710	0800	0800	0900	0930	1030	1130	1230	1330	1430	1530	1715				
Winchelsea (Bridge)	0716	0806	0806	0906	0936	1036	1136	1236	1336	1436	1536	1721				
Winchelsea Beach	0719	0809	0809	0909	0939	1039	1139	1239	1339	1439	1539	1724				
Winchelsea (Smuggler)	0721	0811	0811	0911	0941	1041	1141	1241	1341	1441	1541	1726				
Pett Level	0725	0815	0815	0915	0945	1045	1145	1245	1345	1445	1545	1730				
Fairlight Cove (Hotel)	0731	0821	0821	0921	0951	1051	1151	1251	1351	1451	1551	1736				
Fairlight Glen	0737	0827	0827	0927	0957	1057	1157	1257	1357	1457	1557	1742				
Guestling (School)																
Ore (Christchurch)	0740	0830	0844	0930	1000	1100	1200	1300	1400	1500	1600	1745				
Old Town (Boating Lake)	0746	0836	0850	0936	1006	1106	1206	1306	1406	1506	1606	1751				
Hastings (Harold Place)	0748	0838	0852	0938	1008	1108	1208	1308	1408	1508	1608	1753				
(Rail Stn Interchange)	0750	0840	0854	0940	1010	1110	1210	1310	1410	1510	1610	1755				

PETT PLUMBING & HEATING

Have all your gas fired heating and cooking appliances serviced and checked by your local Corgi Registered heating engineer

Take advantage of our **LOCAL SPECIAL**

Have two appliances serviced and checked for the price of one

Other services available

Complete heating systems designed and installed

Under floor heating and extra radiators installed

Landlords Gas Safety Certificates

Power flushing of heating systems to remove sludge and cold spots

Boiler changes and upgrades

Unvented hot water cylinders installed and serviced

Leaking Hot water cylinders replaced and upgraded

Complete bathroom designed, installed and tiled

Roof insulation and pipe/tank insulation installed

All your plumbing problems undertaken efficiently and promptly

Any genuine written quotation beaten on price with this advert

Call Andy on

01424 813819 or 07809 573389

Andrew Goodsell, 4 Rectory Park, Pett, East Sussex TN35 4EJ

MICHAEL PENFOLD

GENERAL BUILDING

PLASTERING

MAINTENANCE

PAINTING

References available

Reliable and Trustworthy

36 New Winchelsea Rd, Rye, East Sussex 01797 225906 ~ 07974 306258

DO YOU HAVE A SECOND HOME? ARE YOU LEADING A BUSY LIFE?

RELAX with our **SECURE KEYHOLDING SERVICE** we can provide:

Your
Key
Concierge

YourKeyConcierge.co.uk

**ARE YOU WORRIED
ABOUT YOUR EMPTY
HOUSE?**



- Home checks,
- Emergency cover
- Second Home Management

For further details: www.yourkeyconcierge.co.uk, E.mail info@yourkeyconcierge.co.uk, or telephone **DAVID DUNLOP** on 01424 813018/07912 686429

VILLAGE HALL COMMITTEE

The Village Hall is available for private hire – rates on request

Name	Telephone No ~ Email	Responsibility
Phil Button	812148	Chairman
Ray Barden	812551 ray.barden@btopenworld.com	Vice Chairman
Jeanette Barden	812551 jeanettebarden@btopenworld.com	Secretary
Carol Pecorini	813544	Treasurer
Derek Johnson	814829	Hall Manager & Hall Bookings
Evelyn Darnell	812615	Committee Member
Tim Jury	813620	Committee Member
Philippa Strickland	814384 pstrickl@waitrose.com	Committee Member
Sally Williams	813101	Committee Member

CONTACT DETAILS FOR VARIOUS ACTIVITIES IN THE VILLAGE

Activity/Society/Club etc	Contact Name	Telephone Number ~ Email
Allotment Chair	Janet Crook	812764 jcrook@tiscali.co.uk
Badminton Club	Cathy Norris	812129 cnorri@hotmail.co.uk
British Legion	Brian Green	812450 toffee35@gotadsl.co.uk
Bowls Club	Barry Quaife	432897 barry.quaife@virgin.net
Cricket Club	Andrew Dunlop	813368
Dance & Exercise Class	Robin Hutt	813182
Flicks Film Society	Chris Saint	813047 chris@saintfamily.net
Flower Show Chair	Diane Crouch	813177
Flowerpots Toddler Group	Kate Woodbridge	pettflowerpots@hotmail.co.uk
Friends of Pett Level Preservation Trust	Rosemary Moon	812246
Gardening Club	Pauline Barker	812872
Latin American & Ballroom Dancing	Mr & Mrs Hall	813355
MOPPs	Sheila Thomas	01304 19767 sheilaspan@btinternet.com
Naturalist Society	John Taylor	814674 jnct@talktalk.net
P.N Distribution co-ordinator	Brenda Kirkham	815022
Pett on the Net	Peter Wiggins	813922
Pilates	Gaby Valenti	442304
Short Mat Bowls	Linda Jaconelli	431814 lindaajaconelli@btinternet.com
Tennis Club	Dennis Lanner	812430 lanner4ex@btinternet.com
Women's Institute	Joyce Elliott	813000
Yoga	Victoria Eldon	01797 225607

If we have not included your Club/Society etc. please let us know together with contact name, telephone number and email address

pettparishnews@live.co.uk

PETT PARISH COUNCIL – 2010/2011

Councillors	Address	Telephone No:
Cllr. Dr Jillian Green (Chair)	'October', Pett Road, Pett	813841
Cllr. Andrew Dunlop (Vice Chair)	1 Lunsford Farm Cottage, Pett	813368
Cllr. Dr. Arthur Hollman	Sea Bank, Chick Hill, Pett	To be advised
Cllr. Martin King	1 New Coastguard Cottages, Toot Rock, Pett Level	814078
Cllr. Brian Roberts	2 Old Coastguard Cottages, Pett Level Road, Pett Level	812163
Cllr. Paul Stapley	Bower Cottage, Pett Road, Pett Email: paul.stapley@virgin.net	814202
Cllr. David Richards	Ambleside, Pett Road, Pett Email: richards.davidj@yahoo.co.uk	815224
Clerk		
Bob Hodgeson	17 Barnfield Close, Hastings TN34 1TS Email: bob_pettpc@yahoo.co.uk	716232

RESPONSIBILITIES

Pett Village Hall Management Committee	Cllr. Jillian Green
Pett Sports Association	Cllr. Martin King and Paul Stapley
Police Community Consultative Group	Cllr. Brian Roberts
Rother Association of Local Councils Representative	Cllr. Paul Stapley and David Richards
Sussex Association of Local Councils	Cllrs. Andrew Dunlop, Martin King
Flood Wardens	Cllrs. Brian Roberts, Andrew Dunlop Co-opted member - District Cllr. Robin Patten
	Cllr. David Richards

MOPPS

Non-emergency Police number **0845 607 0999**
PCSO Sharon Eldridge **07810 636992**
 (Only answered when PCSO is on duty – otherwise any message left will be dealt with and monitored by local station and action taken if required or left for Sharon on her return to duty)
Please note that if you witness a crime in progress, you should immediately ring 999

Rother District Council (Marsham Ward)

Cllr. Roger Bird	87 Battery Hill, Fairlight, Hastings, TN35 4AL	01424 813636
	Email: roger.bird@rother.gov.uk	
Cllr. Robin Patten	5 Old Coastguard Cottages, Pett Level Road, Pett Level, TN35 4EH	01424 812479
	Email: robin.patten@rother.gov.uk	

East Sussex County Council

Cllr. Carl Maynard	The Burrow, 23 Baldslow Down, Westfield TN37 7NJ	01273 481576
	Email: cllr.carl.maynard@eastsussex.gov.uk	