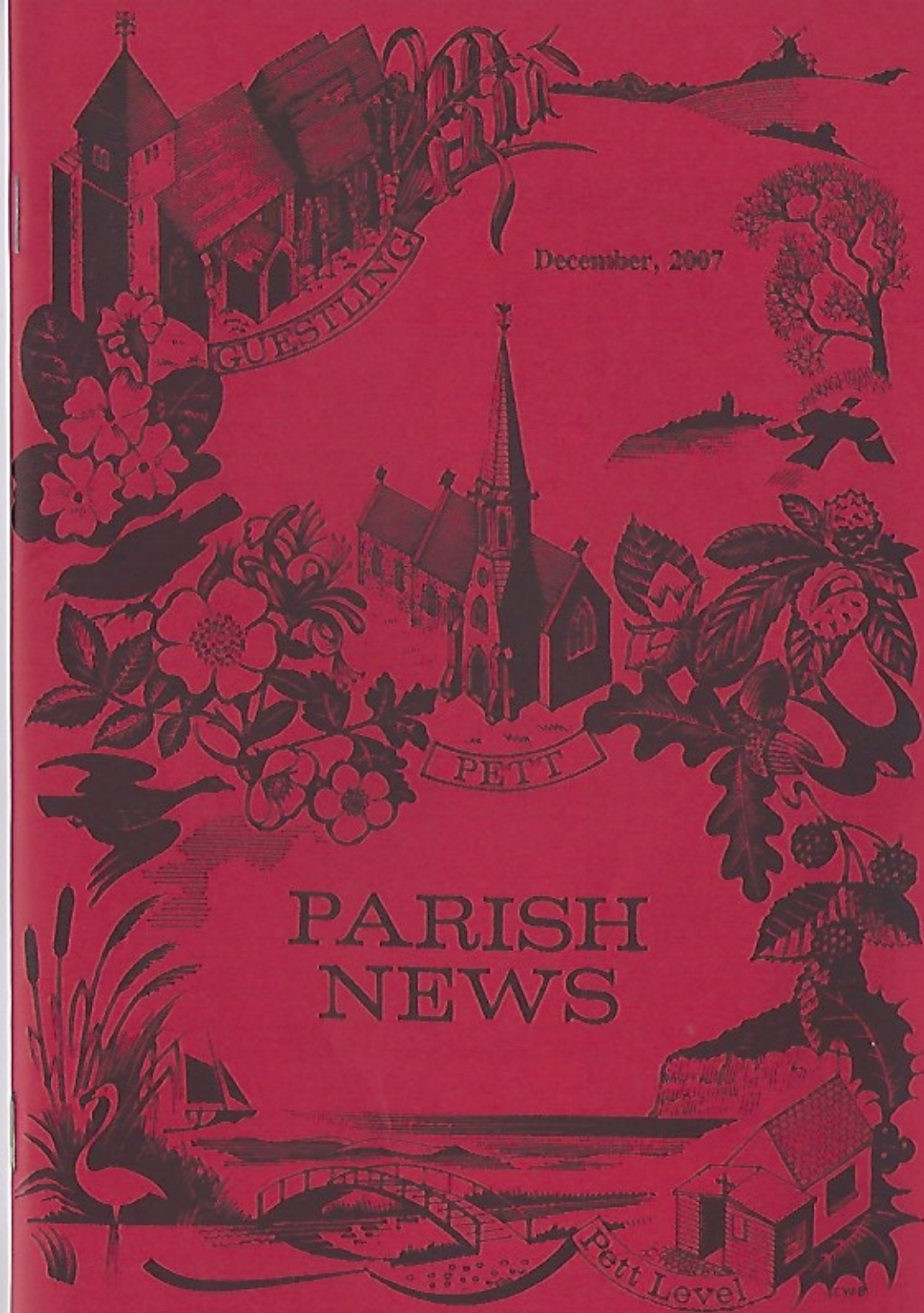


December, 2007

PARISH NEWS



December High Tides Rye Harbour Approaches

Date	Day	Time (hrs)	Height (m)	Time (hrs)	Height (m)
1	Sat	0332	2.7	1611	2.2
2	Sun	0430	2.5	1716	2.1
3	Mon	0535	2.4	1830	2.0
4	Tues	0647	2.4	1935	2.1
5	Wed	0751	2.5	2027	2.4
6	Thurs	0843	2.7	2112	2.6
7	Fri	0927	2.8	2153	2.8
8	Sat	1008	3.0	2230	3.1
9	Sun	1045	3.1	2307	3.1
10	Mon	1120	3.1	2343	3.2
11	Tues	1153	3.1	-----	-----
12	Wed	0012	3.2	1224	3.0
13	Thurs	0042	3.2	1256	3.0
14	Fri	0115	3.2	1331	2.8
15	Sat	0153	3.1	1412	2.7
16	Sun	0238	3.0	1502	2.6
17	Mon	0331	2.8	1603	2.5
18	Tues	0433	2.7	1714	2.4
19	Wed	0541	2.7	1829	2.5
20	Thurs	0653	2.8	1937	2.6
21	Fri	0759	3.0	2034	2.8
22	Sat	0900	3.2	2136	3.2
23	Sun	0959	3.4	2236	3.4
24	Mon	1054	3.6	2322	3.6
25	Tues	1145	3.6	-----	-----
26	Wed	0009	3.7	1238	3.4
27	Thurs	0052	3.7	1317	3.3
28	Fri	0138	3.6	1400	3.1
29	Sat	0218	3.3	1445	2.8
30	Sun	0302	3.1	1531	2.5
31	Mon	0348	2.8	1622	2.2

EDITORIAL

I'm sure that as you picked up this edition of the Parish News you realised that it is larger than usual.

There are so many different topics covered that we hope there will be something of interest for everyone.

Take a coffee break, put your feet up and have a go at the crossword. If you are feeling more energetic you could always have a go at the fish recipe. If neither of these appeal to you why don't you put pen to paper and write to us on any matter that you feel would be of interest to our readers, or comments about the magazine you wish to make. Are there any topics you would like us to over, or adversely, any you wish us to omit? We welcome any input both good or bad!

.....

The Christmas season is upon us so I thought I would just remind our readers of some of the superstitions surrounding 'Kissing under the Mistletoe'.



Gentlemen: Before kissing someone under the mistletoe be sure to remove a berry.
(Once all the berries have gone there must be NO MORE kissing!)

Ladies: (Single ones). If you want to get married be sure to get kissed under the mistletoe this year or you will remain single for another whole year.

Fact:

Mistletoe is the state floral emblem of Oklahoma. Adopted in 1893, it is Oklahoma's oldest state symbol.

Copy for the January edition can be sent to me on email at denise.jordan@virgin.net or delivered to me at 5 Glebe Cottages, Elms Lane (814187). The **deadline** for copy is the **11th December**. Any copy you can get to me before that date would be greatly appreciated.



DENISE AND JACKIE
WOULD LIKE TO WISH ALL PARISH NEWS READERS A VERY

HAPPY CHRISTMAS

AND THANK ALL ADVERTISERS AND CONTRIBUTORS FOR THEIR
CONTINUED SUPPORT



DANCE / EXERCISE CLASS FOR BEGINNERS

Every Thursday 9.30 am - 10.45 am

Simple movement to music taken by fully qualified teacher.

All ages and fitness levels welcome.

Do you want to:

feel fitter

burn calories

increase flexibility

increase bone density

improve muscle tone in a relaxed and fun way?



Just turn up with a pair of good trainers
on your feet and loose fitting clothes - lycra optional!

For further details contact Robin Hutt on 07792 951007 or 813182.



Mobile Hairstyling
and Manicure

Foil Highlights by

John Lewis Qualified Colour Specialist
Precision Cutting, Professional Styling
Call Kris 07905 154138



SEASONS GREETINGS

Lyn, Sinbad & Alex
and

Kevin, Kathleen & Family

Wishing you a Happy Xmas and all
the very best for 2008

Love to you All

Danni & John

Jacqui, John, Toni & Harrison

Lue, Richard & Family



Peter and the staff at
Johnny Swanns would like
to wish everyone a Happy
Christmas and Prosperous
New Year

1948 CHRISTMAS CAKE

The Ministry of Food published an especially economical Christmas cake with Mock Marzipan in this year as a lot of foods were still on ration. Nuts for example were still relatively scarce and expensive, whereas preserves were taken off. These had previously been rationed to only 450g per person per 2 months.

Last month we published the Mock Marzipan to go with this very acceptable fruit cake.

Preparation time: 20 minutes

Cooking time: 2½ hours

Quantity: 1 cake

Preheat the oven to 150°C (300°F)
Gas Mark 2

Cream the margarine and sugar. Gradually add the beaten eggs then the syrup or treacle. Sift all the dry ingredients together then add to the creamed mixture with the fruit and tea. Spoon into the cake tin and make a hollow in the centre so the cake will stay flat on top. Bake for 2½ hours or until firm to the touch and the sides have slightly shrunk away from the tin. Cool in the tin before removing. Enjoy!



115g margarine
450g mixed dried fruit
85g soft brown sugar
2 eggs
3 level tablespoons warmed golden syrup or treacle**
225g plain flour
3 tablespoons cold well-strained tea
Pinch of salt
½ level teaspoon bicarbonate of soda (Do not exceed this amount)
1 level teaspoon ground cinnamon
1 level teaspoon mixed spice

** Warm the syrup or treacle then measure it.

Line an 18cm (7") tin with greased greaseproof paper.



GIFT IDEA

Why not buy your spouse,
sibling, lover or mother
(or even your dad, granny or
neighbour) a

Pett Gardening Club Subscription
for Christmas.

This unique gift costs only £5.00
for the year and can be
enjoyed month after month.
Why not treat yourself too!

Just call Pauline on 812872

BUCKSWOOD SCHOOL



Education should be stimulating and exciting. At Buckswood we know that a happy student learns well, but that there are other aspects of equal importance to a child's future success. Our aim is to prepare students for life.

We are co-educational and international, with roughly a 50:50 split boarders/ day pupils, boys/girls, international/local students. To live harmoniously with such diversity can only be successful if simple, but sometimes forgotten virtues are applied: respect for others, good manners, care, consideration and a "wide angle view" to accommodate differences as well as similarities.

Private education may not be as expensive as you think and investing in your child's future brings a guaranteed return. We also offer both Scholarships and Bursaries. Why not call us on 01424 813813 to find out more.

Come and see the Buckswood difference for yourselves, we would love to welcome you here.

Buckswood School
Guestling, Near Hastings,
East Sussex, TN35 4LT.
Tel: 01424 813813. Email: pr@buckswood.co.uk

DO YOU KNOW ?

You have heard about the 'Twelve Days of Christmas' but do you know about the 12 Myths of Christmas?

1. Prince Albert, consort of Queen Victoria, first introduced the Christmas tree to Britain. The tree that Albert set up for his five children in 1848 was soon adopted as a custom in this country. However another royal consort, George III's wife Charlotte had made the Christmas tree a feature of life at court from 1761.

2. Mistletoe was banned from churches. There is no evidence to support this, nor even that it was used in 'pagan' ceremonies in England. From the first century AD Druids have been described by Pliny as harvesting mistletoe with a golden sickle - but that was in Gaul and not in Britain.

3. Decorations should come down on January 6th. Until the 19th century people would keep decorations of holly, ivy, box, yew, laurel and mistletoe up until Feb. 2nd, Candlemas Day. It was not until the reign of Victoria that decorations came down on Twelfth Night, Jan 6th, and were generally burnt.

4. Jan. 6th is the Orthodox Christmas. The Orthodox celebrate Christmas on Jan. 7th by our calendar because their calendar does not incorporate the Gregorian reforms of the 16th century.

5. We three kings of Orient are. They are not called 'kings' in the Bible but "wise men from the east" (Matthew 2:1). They are taken to be kings because the prophet Isaiah says (Ch. 60:v 3), "And the Gentiles shall come to thy light and kings to the brightness of thy rising".

6. It is illegal to eat mince pies on Christmas Day. An Act of June 8 1647, declared that "forasmuch as the feasts of the Nativity of Christ, Easter, and Whitsuntide, and other Holy Days have been heretofore superstitiously used and observed, be it Ordained, by the Lords and Commons in Parliament assembled, that the said Holy Days be no longer observed". Mince pies were not singled out.

7. Santa Claus is American. St Nicholas was Bishop of Myrna, in what is now Turkey. But his transformation into Santa Claus was indeed accomplished in America, largely through the poem, *The*

Visit of St. Nicholas,
published in 1882.

8 Santa Claus is the same as Father Christmas. Not really. There were names for Father Christmas, or Sir Christmas, hundreds of years ago. In a 16th century manuscript a carol has the words, "Who is there that singeth so, Nowell, nowell nowell? I am here, Sir Cristesmasse. Welcome my lord, Sir Cristesmasse".

9 Nowell means "good news". Nowell comes through Old French from the Latin "birthday", referring to the birth of Christ. Only in the 19th century did it come to be used (in the form of noel) as a synonym for 'carol'.

10 *Adeste Fidelis* is an ancient carol. Some medieval carols are in Latin, but the words of *Adeste Fidelis* are found in a manuscript dating from only 1750, written by John Wade. They were translated into English in 1841 (O Come All Ye Faithful).

11 Good King Wenceslas looked out. Wenceslas did exist and the feast of Stephen is Boxing day. Much of the rest comes from the pen of John Mason Neale who published the lyrics in 1853 to go with a medieval tune.

12 Christmas cards originally had religious themes. In

1843 John Calcott Horsley designed a Christmas card for sale for Sir Henry Cole, founder of the Victoria and Albert Museum. The cards were lithographed and hand coloured, and were sold at one shilling each – a very high price in those days. The picture was of family cheer, not a religious scene.

Having said all this, Christmas itself is not a myth. Do have a blessed and very happy Christmas and may 2008 bring you all peace and joy.

John Taylor.

PETT SCAFFOLDING

ESTABLISHED 1982
- LOCAL TO PETT -

DOMESTIC & COMMERCIAL
Supplied • Erected •
Dismantled

ALL AREAS COVERED AT
COMPETITIVE RATES
SAME DAY SERVICE OFTEN
AVAILABLE

SPECIAL RATES TO LOCAL VILLAGES

Full Public Liability Insurance

- NO JOB TOO SMALL -

CALL KEN ADAMS ON
01424 813230 or 07956058429

Red Gable, Watermill Lane, Pett

GARDENING CLUB NEWS

Mr. Hilary Newman came to talk to us about 'The Small Greenhouse' at our meeting on Tuesday last.

Mr. Newman comes from Tonbridge and has worked all over England in various gardens and until his retirement at Hadlow Horticultural college. He told us that he had taught most of the members of staff still remaining at the college, which has now sadly closed. Not all bad news as he is still able to use many of the greenhouses there to overwinter his tropical plants, bananas and canna lilies etc.

Mr Newman's talk was most interesting as he touched on greenhouse bugs and how to treat them, and voiced the concerns of many gardeners over the use of 'Nematodes' the organisms bred to kill off many of our garden pests by devouring them from inside-out. He talked about planting seeds of early summer plants in late summer, and over wintering them in the greenhouse. These plants then would have a good root system and out-grow and out-flower those which we would usually plant in the spring.

One of the most important and often overlooked 'chore' in the greenhouse is the cleaning and disinfecting of not only the greenhouse, but all the pots and seed trays and equipment used for growing seeds and propagation.

I'm sure we all think we are very clean and tidy in our sheds and greenhouses and in the spring happily sow our seeds and are delighted when they all start to germinate, but oh! the disappointment when our little wavering seedlings keel over and wither or 'damp off' because of some nasty little organism we haven't managed to kill off with our disinfecting. So it really is important to get well prepared, and instead of when potting on plants throughout the year, putting the old pots away in the corner, clean them before you put them away, then they won't pile up into heap that you won't want to spend hours cleaning!

We all enjoyed the evening and the slides Mr Newman brought along filled us with enthusiasm for greenhouse 'gardening' and we all came away with lots of ideas about what we were going to grow next year, and full of resolve about keeping pests and diseases away!

Don't forget our last meeting this year on Tuesday 11th December, our Christmas evening with a choice of Hot Mulled wine or an exotic (non alcoholic) fruit punch, mince pies and Christmas fare, a special Christmas Raffle and the 'fun and games' of the Christmas Gardening Quiz!

We look forward to seeing you there pencils and tastebuds at the ready!

P.W.B.

MICHAEL PENFOLD

GENERAL BUILDING
PLASTERING
MAINTENANCE
PAINTING

References available
Reliable and Trustworthy

36 New Winchelsea Rd
Rye, East Sussex

01797 225906
07974306258

J. Gardener Window cleaner

Professional, Reliable
and Insured
Est. 1993
Residential/Commercial

*Frames and Sills
included*

☎
01424 812732
07855 604397

Pampered Paw's

Qualified & Professional Dog
Groomers, Doggy Day Crèche, Dog
Walking



Please call for further details and
ask for Nikki on:

Tel: 0791 7825 436

or E-mail me on:

niksco@hotmail.com

or visit

www.pamperedpaws.piczo.com

We are open Monday to Friday

8.00am – 5.00pm

Saturday 10am-3pm

Cove Computers

- ❖ New PC's built to order
- ❖ Upgrades for enhanced capabilities & performance
- ❖ Installation, repairs & maintenance
- ❖ Internet & e-mail configuration
- ❖ Networking for file, printer & internet connection sharing

For fast, friendly & reliable service
call 01424 812427

or e-mail
enquiries@covecomputers.co.uk

NATURE NOTES

I was very interested and somewhat envious to hear that a wryneck had visited the garden of Forge Cottage. This rare visitor is a type of woodpecker, with a long, sticky tongue which it uses for catching ants. When in danger, the bird twists its head from side to side and hisses, flickering its tongue in and out like a snake.

It's only a few years since there was much excitement because Little Egrets were seen locally. Now these beautiful little white herons are relatively common, and have started breeding here. How long will it be before they follow the example of our Grey Herons and start to visit garden ponds? Perhaps they are already doing so. Do please let me know if you see a Little Egret inspecting your pond.

There have been a lot of reports of badger damage to gardens. They will certainly dig up and eat your carrots, but mostly they are just digging for worms and grubs – not that that is much



comfort when they leave your lawn looking like a ploughed field, or uproot a treasured shrub. There are many badger deterrents available, some of which work for some people, but the only permanent solution is to install a badger-proof fence; not as easy as it sounds, since they are extremely strong and can get under or through most barriers. They can also climb well. I have seen a wonderful film of badgers up a tree!

 The weather as I write in early November is perfect, with warm sunny days and gorgeous sunsets. Autumn colours are a joy, especially the silver birches, and the birds are gorging themselves on berries and rose hips. This morning I looked out of the kitchen window and saw that the pale trunk of the dead beech tree next door had turned bright pink as it reflected the sunrise. Every season has its own beauties, but autumn is my favourite.

Avril Thurbay

DAVE BRETT



DO A LOT!

HOME AND GARDEN MAINTENANCE SERVICES
PAINTING AND DECORATING

GRASS CUTTING AND HEDGE CUTTING

CALL DAVE for a FREE ESTIMATE ON:

01424 435075

Mobile 07963 110591

A MAN THAT CAN...
NOW IN PETT VILLAGE!
I CAN TACKLE ANY ODD JOBS AROUND THE HOME OR GARDEN THAT YOU
MAY BE UNABLE TO DO YOURSELF. ANYTHING FROM A SQUEAKY HINGE
TO PUTTING UP SHELVES, TO ASSEMBLING FLAT-PACK FURNITURE OR A
GARDEN SHED. I AM MATURE, HONEST, RELIABLE AND HAVE BEEN CRB
CHECKED. REFERENCES AVAILABLE.
CALL FOR A FREE ESTIMATE. NO JOB TOO SMALL.
Tel: Chris Sherwin on 07875 109215 or 01424 813825

JOHN COX

Quality Building Work

Inside and out. No job too large or too small.

PLASTERING, ROOFING, CERAMIC & MARBLE TILING,
DECKING, PATIOS, ETC.

Call John on: 01424 439995 / 07792964210

FOR A FREE ESTIMATE & ADVICE



FENCING

ALL TYPES OF FENCING SUPPLIED AND ERECTED

25 years experience - examples of our work throughout the village

For free estimates and advice contact

JOHN OSBORN



DAVID JARRETT

- Pett -

01424 813564

Mobile 07751492821

Also Hedge Cutting - Tree Surgery

Mowing - Garden Clearance

OUR LOCALITY IS OUR GUARANTEE



FLICKS FILM SOCIETY

Our show on the 6th December will
be the film *The Holiday*, a
seasonal romantic comedy.

comes knocking at the cottage
door.

As an added bonus, we will be
serving glasses of mulled wine to
celebrate the festive season.

Amanda Woods (*Cameron Diaz*),
the owner of a prospering
advertising firm that creates movie
trailers, lives in Southern California.
Iris Simpkins (*Kate Winslet*) writes
the popular wedding column for
London's Daily telegraph and
resides in a charming cottage in the
English countryside. Amanda,
wanting to get out of town for the
holidays, stumbles onto an Internet
site that specialises in home
exchanges, and finds Iris' English
cottage to be the perfect antidote to
her troubles. On impulse, Amanda
and Iris agree to crisscross
continents and move into each
other's homes for two weeks.

Launching our 2008 season on
January 3rd we will be entertaining
the audience with the film *The
Painted Veil*, a sumptuous
adaptation of the *Somerset
Maugham* novel with stunning
Chinese locales and a smart turn
from *Naomi Watts* as Kitty Fane. I
will of course tell you more about
this film in the December
newsletter.

Please do not forget, all are
welcome to join the Society and
enjoy an evening watching a film for
as little as £4.00 per show with like-
minded people in the local
environment of Pett Village Hall. If
you wish to know more about the
Society, please email me on
chris@saintfamily.net or telephone
on 813047. Alternatively, you can
pop into the Butchers Shop in Pett
and grab an application form. All
films start at 7.30pm with
refreshments served from 7.00pm.

Have a very Merry Christmas and
hope to see you, if not before, in
the New Year.

Iris lands in Los Angeles on a
spectacularly clear day warmed by
the gusts of seasonal Santa Ana
winds. Not long after she arrives at
Amanda's Brentwood home, she is
befriended by Arthur (*Ell Wallach*),
a noted screenwriter from
Hollywood's Golden Era, and Miles
(*Jack Black*), a film composer who
works with Amanda's ex-boyfriend.
In England, where it is anything but
balmy, Amanda is just settling into
the cozy solitude of the snow-
covered Rose Hill Cottage, when
Iris' handsome brother (*Jude Law*)

Chris Saint and the Flicks Team



DAFFODIL PLANTING

The Gardening Club was asked again by the Parish Council to plant a further 2,300 daffodil bulbs in the village as we had done last year. Various sites were identified and all the bulbs were planted on Saturday 3rd and Sunday, 4th November. The following members of the club did all the hard work:-



Pauline Barker, Sue Dengate, Avril Thurley, Brigitte Griffen, Jillian Green, David and Jackie Richards, Jan Gibbs, Jo Johnson, Betty and Terry Harknett, our most senior planter Peggy Trinder now 87 years old and not forgetting Phyllis Gerrell who made us all lunch in the Village Hall.

Added to those planted last year, the village should really have a splendid display for 2008.

We also had given to us by Three Oaks Gardening Club 84 packets of Pot Marigolds and these were planted in front of the Church and at Hyde Park so with any luck we may get a second display of colour after the daffodils.



PWB 15 11 2007



GIFT IDEA

Try a Christmas present with a future

Camellias
Nursery Vouchers

ROTHERVIEW NURSERY

Open 10 - 3 everyday

Garden Design and
construction service available

Your local Plantwrights

Ivyhouse Lane, Three Oaks
Hastings TN35 4NP
01424 756228

rotherview@btinternet.com
www.rotherview.com



JUST A SEC!

Are you struggling with the admin side of your business? Let me help. I have many years experience in every aspect of office administration. I have excellent computer skills and my own fully equipped office. If you think you could do with some help, but not necessarily fulltime, then I could be the one to solve your problems. Jennifer Sherwin
01424 813825 or 07854 039585
jennifer.sherwin@btinternet.com



JOHNNY SWANNS

Established in 1957

At the Fishmarket
Rock-a-Nore Road
Old Town
Hastings.

01424-445239
Ans/Fax 01424-436433

Suppliers of all your fish and seafood needs.

Locally caught fish a specialty.

Smoked and exotic seafood delivered
fresh daily.

Mixed freezer orders by arrangement, nothing too large
or small.

Our *polite and helpful staff* are always on hand to advise
and serve.

Open seven days a week from 8am until 5pm.

Look out for our Blue and Yellow boards.

All major cards accepted.



TURBOT

The turbot is a large flat fish which is prized for its firm white flesh, and subtle refined flavour. It is one of the more expensive fish and when cooked with a few carefully selected ingredients, it makes a memorable meal – elaborate flavourings or accompaniments are wholly unnecessary. Although not plentiful, turbot is caught all year throughout Rye Bay. It is a fish that has been held in high regard in Europe for at least two thousand years. Turbot is a good source of protein, vitamins B3 and B12, selenium (important for immune system functioning), magnesium (plays a part in metabolism) and phosphorus (helps build strong bones and teeth). When buying turbot, look for bright, un-sunken eyes and smell for seawater freshness. It can be stored in the fridge for up to 3 days, and in the freezer for 3 months.

This month's recipe is a special treat to celebrate the festive season.

MERRY CHRISTMAS and a HAPPY NEW YEAR

Ragout of turbot and scallops with vouvray, butter and basil

570ml/ 1 pt fish stock made from turbot bones

900g/ 2lb piece turbot, filleted and skinned

50g/ 2oz each of carrot, thinly sliced celeriac, white of leek and button mushrooms

75g/ 3oz butter

50ml/ 2 fl oz vouvray or any other medium dry white wine

8 large or 12 queen scallops, prepared

150ml/ 5 fl oz crème fraîche

Lemon juice, seasoning, 10 fresh basil leaves, shredded thinly

Pour the fish stock in the pan and boil rapidly to reduce to 150ml/ 5fl.oz. Cut the turbot fillet across into slices 2 cm/ ¾ in thick. Heat the butter and half of the wine in a wide, heavy based pan large enough to hold the slices of turbot in one layer. Add the carrot, celeriac and leek strips, cover and cook gently for 5 minutes until just tender. Stir in the mushrooms and a little seasoning. Lay the slices of turbot on top of the vegetables, spoon over the rest of the wine, reduced fish stock and crème fraîche, and season lightly. Cover and cook over a gentle heat for 3 minutes. Add the scallops to the pan, cover and cook for a further 1-2 minutes until the sauce has thickened slightly. Season and add a little squeezed lemon juice to taste. Spoon the vegetables on to four warmed plates. Arrange the turbot and scallops on top and serve garnished with sprigs of fresh basil and new potatoes or pasta.

PARISH DIARY – DECEMBER 2007

VH = Village Hall

RG = Recreation Ground

Monday 3 rd	Flowerpots Toddler Group	VH	9.30 am
	Quiz Night	Royal Oak	8.30 pm
Wednesday 5 th	Badminton	VH	10 am
	Mobile Library	Church	10.20 am
		Chick Hill	11.10 am
		Smuggler	11.45 am
	Puppy Training Class	VH	1 pm
	Advanced dog training	VH	2 pm
	Short Mat Bowls	VH	3pm & 7pm
Thursday 6 th	Dance & Exercise Class	VH	9.30 am
	Flicks in the Village	VH	7.30 pm
Friday 7 th	Latin American & Ballroom Dancing	VH	2 pm
Saturday 8 th	Coffee Morning,	Parish Church	10 am
Monday 10 th	Flowerpots Toddler Group	VH	9.30 am
	Quiz Night	Royal Oak	8.30 pm
Tuesday 11 th	Garden Club	VH	7.30 pm
Wednesday 12 th	Badminton	VH	10 am
	Puppy Training Class	VH	1 pm
	Advanced dog training	VH	2 pm
Thursday 15 th	Dance & Exercise Class	VH	9.30 am
	Short Mat Bowls	VH	3 pm & 7pm
Friday 14 th	Latin American & Ballroom Dancing	VH	2 pm
	Railway Club	VH	7.30 pm
Monday 17 th	Flowerpots toddler group	VH	9.30 am
	Quiz Night	Royal Oak	8.30 pm
Tuesday 18 th	Parish Council	VH	7.30 pm
Wednesday 19 th	Badminton,	VH	10 am
Wednesday 19 th	Mobile Library	Church	10.20 am
		Chick Hill	11.10 am
		Smuggler	11.45 am

	Puppy Training Class	VH	1 pm
	Advanced dog training	VH	2 pm
Thursday 20 th	Dance & Exercise Class	VH	9.30 am
	Short Mat Bowls	VH	3pm & 7 pm
Friday 21 st	Latin American & Ballroom Dancing	VH	2 pm
	Women's Institute	VH	2.30 pm
	Naturalist Society	VH	7.30 pm
Monday 24 th	Quiz Night	Royal Oak	8.30 pm
Wednesday 26 th	Puppy Training Class	VH	1 pm
	Advanced dog training	VH	2 pm
Thursday 27 th	Short Mat Bowls	VH	3pm & 7 pm
Friday 28 th	Latin American & Ballroom Dancing	VH	2 pm
Monday 31 st	Quiz Night	Royal Oak	8.30 pm

NOTE: Flowerpots will finish on the 17th December for the Christmas Break and recommence on the 14th January.

If you would like your special events or regular meetings to be included in the Parish Diary, please drop a programme, note, or fixture list in to Rectory Cottage.

Avril Thurley

CHURCH SERVICES – DECEMBER 2007

Sun. 2 nd Dec.	Parish Communion, 9.30am – St Mary & St Peter
Sun. 9 th Dec.	Holy Communion, 8am – St Nicholas, Pett Level Toy Service, 10.45am – Methodist Chapel
Sun. 16 th Dec.	Parish Communion, 9.30am – St Mary & St Peter
Sun. 23 rd Dec.	Holy Communion, 8am – St Nicholas, Pett Level Morning Praise, 9.30am – St Mary & St Peter
Mon. 24 th Dec.	Family Christmas Service (Christingle), 3pm. – St Mary & St Peter
Tue. 25 th Dec.	Christmas Parish Communion, 9.30am – St Mary & St Peter
Sun. 31 st Dec.	United Benefice Communion, 10.30am – St Laurence, Guestling

Dear Editor



We feel that we must say a BIG THANK YOU to the kind people of the village who allowed the children to knock on their doors on trick or treat night ~ their generosity was amazing.

Most of the children that knocked on my door alone had huge bags, each nearly full to the brim with all sorts of goodies. So of course - more treats than tricks!

I was surprised to hear and see how much fun it not only gave the children, but also the fun it brings to some people to see the children at their doors dressed up as ghosts, witches and hideous ghouls and having harmless fun and wishing them Happy Halloween.

We feel that it should be known that we do appreciate the kindness of the locals for allowing the creatures to knock their doors and ask (or shout!) TRICK OR TREAT.

Helen Clifford and friends

POSTAL SCAM

A friend emailed me this message the other day which she received via her Neighbourhood watch and I now pass on for your information.

'It has been confirmed by Royal Mail, and the Trading Standards Office is making people aware of the following scam:'

A card is posted through your door from a company called PDS (Parcel Delivery Service) suggesting that they were unable to deliver a parcel and that you need to contact them on 0906 6611911 ~ which is a premium rate number.

DO NOT CALL THIS NUMBER, as this is a mail scam originating from Belize. If you call the number and you start to hear a recorded message you will already have been billed £15 for the phone call.

Rectory Cottage

Dear Editor,

May I make a plea to those kind hearted people who put out food for foxes? Recently a fox took a chicken in broad daylight, in spite of there being several people about. He enjoyed his meal so much that he came back for another one, when he was duly shot and killed. He was so tame that he stood and looked at the marksman, quite unafraid. Within 24 hours two other equally tame foxes had been shot; I saw their bodies. One was a pretty little vixen with black legs. No doubt they had been thinking how kind the chickens' owner was, to put out live food for them.

Before feeding foxes (or badgers for that matter) and making them unafraid of humans, please ask yourself whether the pleasure you gain from doing so is outweighed by the death sentence you are inevitably passing on the foxes.

Avril Thurley

.....

The Roundels, Pett Road
Pett, Hastings, TN35 4HG

3rd November 2007

Dear Editor,

Guide Dogs for the Blind

Just to thank everyone who has deposited used postage stamps in the box with Tony at the Post Office.

Christmas is fast approaching and I trust you will remember the good work that your stamps are doing.

Please keep up the good work.

Trevor Hindson

Riddellcourt Caravan Site
20/10/07

Dear Friends in Pett Level,
Thank you all so much for the love and friendship you give to all of us, who enjoy being in our caravans close to the sea.
It really is such a joy, to have you smile and greet us when we come to East Sussex in the Spring.
Pett Level is such a special place! Lovely wildlife. We all do enjoy it so much.

Caravaner
Madeleine Bennett

PETT W.I.

There will be no official meeting in December. Instead we are going to the Bridge Inn at Winchelsea on Friday 14th December for a celebratory pre-Christmas lunch, a good – if rather early start to the seasonal festivities.

Back to normal though in January ~ feel like joining us? Then do come along, details in the next magazine.



The members of Pett W.I. would like to wish all the Parish News readers a very Happy Christmas and prosperous New Year!

Evelyn Darnell

Hate Housework? We Love It!

• **A company you can trust:** established over 10 years, and with thousands of satisfied customers, take pride in the quality of our work and in making sure we don't let you down.

• **Security - You don't want just anybody in your property:** all staff are full-time employees (we don't use part-time or casual staff) who are fully insured and have been through our strict vetting and selection process.

• **Customer Service:** we tailor our cleaning plan and schedule to your own individual needs, supply all equipment, and materials, and try to

ensure that you always have the same cleaning team, so there's nothing at all for you to worry about.

• **Qualified Staff:** all staff have completed our comprehensive training programme and we have an experienced supervisor on every job.

• **Results with Value:** we specialise only in residential homes, so we can offer an outstanding service at competitive rates.

We guarantee that if you are not completely satisfied we'll do the job again free of charge.



Call your local myhome office
for a FREE estimate

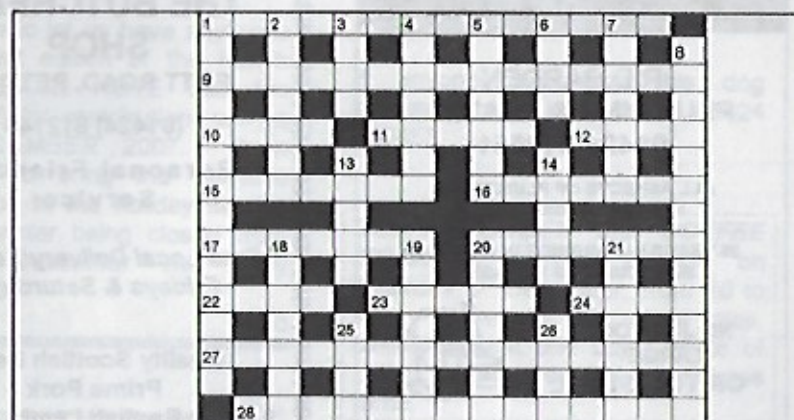
0845 260 7564

Hastings@myhomeplc.com

myhome

taking care of your chores

www.myhomeplc.com



Across

- 1 Somewhere - 1 (4, 3, 7)
- 9 Like Guy Fawkes Night (5, 2, 3, 5)
- 10 Illustrious Man (4)
- 11 Blackthorn Fruit (5)
- 12 Cleansing Agent (4)
- 15 Late (7)
- 16 Throw out (7)
- 17 And Conditions (7)
- 20 Started up (7)
- 22 Allium porrum (4)
- 23 Lawful seat? (5)
- 24 Vertical tilt in a wall (4)
- 27 Probably Turkey (9, 6)
- 28 So one can sympathise (14)

Down

- 1 Where you can get chips (3, 3, 3, 5)
- 2 Make sure it happens (7)
- 3 Himalayan wild goat (4)
- 4 Shine Brightly (7)
- 5 Accomplish (7)
- 6 Personal label (4)
- 7 Wrong score (3, 4)
- 8 For the Looker's money (9, 5)
- 13 Proverb (5)
- 14 Better not go up it (5)
- 18 Take too long (7, 0)
- 19 Useful for temperature control (7)
- 20 Popular Garden or greenhouse plant (7)
- 21 Turn to enter (4, 3)
- 25 Small land (4)
- 26 Perhaps bacon (4)

NEED A PLUMBER?

**R.D.BARDEN
PLUMBING & HEATING
01424 812551**

ALL ASPECTS OF PLUMBING &
HEATING UNDERTAKEN.

35 YEARS EXPERIENCE IN PETT AND
SURROUNDING VILLAGES.

NO JOB TOO
LARGE
OR TOO SMALL



YOUR LOCAL PLUMBERS

THE BUTCHERS SHOP

PETT ROAD, PETT

(01424) 812148

Personal Friendly
Service

Free Local Delivery Service
Fridays & Saturdays

Quality Scottish Beef
Prime Pork
English Lamb
Home Cooked Ham
Seasonal Meats
Barbeque Ideas
Delicatessen
Traditional Home made

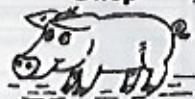
P.J. Turner

ALL ASPECTS OF
TREE WORK
CONTRACTOR

MOWING - LOGGING
FENCING

FREE TELEPHONE
ESTIMATES 01424 812604

Wahams Farm Shop



Pett Level Road
Fairlight
East Sussex

OPEN DAILY
FOR FRESH PRODUCE,
CAKES, PIES, FRUIT JUICE,
FLOWERS, PLANTS, SHRUBS,
POTS, COMPOST.

PICK YOUR OWN
SOFT FRUIT & VEGETABLES

TEL. 01424 814898

IMPORTANT NOTICE

If you wish to let us have any copy for the next edition of the Parish News PLEASE NOTE that the DEADLINE for contributions will be 11TH DECEMBER 2007. It is necessary to bring the deadline forward due to the holiday season and the printer being closed from the 21st December until early January.

Ed

'CAROLS IN THE BARN' 15TH DECEMBER 6.30 PICKHAM FARM

Yes its that time again so come along and lowe with the cows, baa with the sheep and generally make merry with mince pies and mulled wine. Be in good voice and bring loads of cash for the collection in aid of Farm Africa!!!

Call Tim on 813620 for details.

FOUND

Staffordshire type black bitch found in Pett on 4th November at approx 6.30p.m.

Black with white collar extending from middle of head around the right side to under chin. White breast. An older dog going white around muzzle and eyebrows. Has had pups in the past. Wearing old brown leather collar but no I.D. tag.

Very friendly and used to being indoors. Obviously well loved and cared for.

If anyone recognises this dog please contact Keith May 01424 812458

DON'T FORGET the COFFEE MORNING, at Pett Church, on Saturday 8th December, from 10 to 12. There will be mince pies, cakes, (to eat and buy), bowls of bulbs and a special Christmas raffle.

CECILY PERRING

At the last Parish Council Meeting, Cecily Perring, who died in October, was remembered. Cecily served on the Council from 1995 till 2001, and was very supportive to me when I was Chairman, and to the Council in general.

She held strong views on many issues in the parish and was never afraid to air them. Her no-nonsense approach to tackling sensitive issues was a breath of fresh air, even if on occasions some people got trodden underfoot, particularly over-officious bureaucrats.

Cecily was also a kind, caring person who did much for many village organisations.

Andrew R Dunlop
Chairman, Pett Parish Council

C J CONSULTANCY

IT CONSULTANCY, NETWORKING, PROGRAMMING AND SUPPLIES

RESIDENTIAL AND COMMERCIAL PC REPAIRS

Tel: 01424 815014
Fax: 08701 363302
Mobile: 07866 510361
Email: chey@cjc-it.co.uk



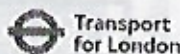
JAMES BOREHAM BSc (Hons)

M: 07970 377 801

**fluent in web design & print
city finish at local rates...**



TESCO
Every little helps



YOUR **M&S**



COUNTRY CARERS

Country Carers Ltd
Unit A Sherwood Industrial Park Main Road Icklesham TN36 4BA
Community Carers
We provide Personal & Domestic Care within your own home
Tel: 01424 813675 Mob: 07960 063658 (24hr)

PETT PLUMBING & HEATING

FOR ALL YOUR PLUMBING NEEDS
Telephone 01424 813819 or Mobile 07773 006797

Andrew Goodsell, 4 Rectory Park, Pett Road, Pett, East Sussex, TN35 4EU



CAROL SINGING IN PETT:

*"On the eleventh day of Christmas,
my true love sent to me: eleven
pipers piping!"*

Christmas is coming, but you are unlikely to get eleven pipers playing outside your door. However, you will get more than eleven (I hope) Carol Singers making an equally lovely sound outside your home on one of the days leading up to Christmas.

Yes, it's Carol time, and on Monday the 17th of December we shall once again meet in St. Mary & St. Peter's church, Pett Road, at 6.45pm - wearing our warmest clothes and suitable boots, carrying torches and ready to go (whatever the weather!). We shall provide the Carol Sheets and leave the church at 7pm sharp to sing our way along Pett Road, Rectory Park, the Royal Oak, the Glebe and Oakfield, hoping that we will get a great welcome at each house we call upon. Please give generously, as you always do, and you can be sure that every penny will go straight away to the local Surviving Christmas group to help some of those less fortunate than ourselves. Last year we raised just over a

£100. Why don't you help us to beat the record?

After our efforts we shall enjoy some refreshments at the 'Roundels', thanks to the extreme kindness of Pat and Trevor Hindson. They always make us so very welcome; it is a lovely way to round off the evening (no pun intended!). If there are any youngsters wishing to join us, and their parents cannot collect them at the end of the evening (soon after 9pm at the 'Roundels'), we shall make sure that they get home safely.

Do come and join us if you can. It is always a good evening and the more voices we have the better the sound carries. By joining in the singing or by digging deep into your pockets we will be bringing some extra Christmas cheer to some folk that have very little to celebrate at this festive season.

We look forward to seeing you at 6.45pm in the church on Monday the 17th of December, and thank you all so very much for your support.

John Taylor

ARROWMEAD

Interior & Exterior Painting & Decorating.
Laminate Flooring. Ceramic Wall & Floor Tiling.
Installation of Kitchen, Bedroom & Bathroom Suites.
General Property Maintenance.
Customer References Available. Fully Insured.
aps14@tiscali.co.uk

FOR FREE ESTIMATES ON ANY OF THE SERVICES LISTED

CALL Paul on 07833 107090 or Phil 07789 268201

LAWN MOWING SERVICE

FOR A FREE ESTIMATE
PLEASE CALL
EMMA
ON

07813 306440



Micro + Print

Local Printers
All types of printing from
raffle tickets to
full colour brochures
for more information
please call Dave or Carly
Tel:
01424 813 052

Funnell & Perring SOLICITORS

192-193 Queens Road Hastings East
Sussex TN34 1RG

EXPERIENCED ADVICE IN A
FRIENDLY CARING ATMOSPHERE

We specialise in:

Wills and Trusts	Conveyancing
Probate	Family Matters
Child Care Work	Court Work

Please contact
Mrs Angela Hawksley
on 01424 426287/437081
for more information

LIFE ON THE LEVEL

The Level is becoming ours once again with the departure of visitors and our friends from Riddelcourt and Winchelsea Beach Caravan Parks, who have once again packed up and returned to the warmth and safety of their bricks and mortar homes for the Winter. At the end of October they were given a great send off with music and merrymaking late into the night for those who fancied a final fling to end the season.



The seawall and beach will still attract Sunday strollers when the weather is kind and hopefully they will discover the delights of a roast lunch at either The Smuggler, with their renowned carvery, or The Beach Club which is now offering a very reasonable menu and roast potatoes to die for! Did you know you can become a weekly member at The Club for just £1 Temporary Membership? If you aren't a Member already it's a cheap way to try it out.

The birds are returning at last. Following the dreadful hailstorm back in July there were so few birds visiting the gardens and the feeders were ignored, but gradually their numbers have

increased again. Many of them are migratory birds and the 'twitchers' are to be seen along at 'the ponds' and in the hides along the canal with their cameras and binoculars poised and ready to be trained on any unusual sightings. The canal looks lovely at this time of year when the reeds have been cut back allowing it to reflect the beautiful sunsets we have been having recently and, if you are lucky, the electric blue flash of a Kingfisher. A walk along the bank is also enhanced by the sight of the Aylesbury ducks which were raised in an incubator by young Olivia, with a little bit of help from Mum and Dad. Will they still all be here after Christmas?

Thank you to the person who has so thoughtfully erected a beautiful seat on Toot Rock. There is no dedication or inscription, but it commands a wonderful viewing spot where we can sit and reflect on what a beautiful area we are so privileged to enjoy and live in.



B.M.



D J SILLS

**INTERIOR/EXTERIOR
DECORATOR**

TEL: 01424 812218

LUNSFORD FARM



**NEW SEASON LAMB AND
POTATOES NOW
AVAILABLE**



LAMB TO ORDER

**FOR MORE INFORMATION
TELEPHONE: 01424 813368
OR
MOBILE: 07776 143509**

HARC CHARITY SHOPS

**Welcome Your
Unwanted Items
Including Furniture
Free collection
But please no refuse
01424 720500/722164
Mon-Sat 9.30 - 4 pm**



Registered Charity 1083566

**Private Tuition
in
Literacy and Numeracy**

**Key Stages 1 and 2
(5 - 11 years)**

**from Qualified Teacher
with 30 years experience
(References available)**

**Christine Penfold
01424 813414
(Pett)**



Icklesham Koi
Koi Carp Specialists of East Sussex

We are a family run business, situated off
Broad Street within the village of Icklesham
near Winchelsea, East Sussex.

Visit Us For

Koi & Ornamental Fish	Plumbing & Pipework
Koi & Ornamental Foods	UVs
Pond Cleaning Service	Electrical
Fibreglassing	Heaters
Air Products	Pumps
Filtration Systems	Water Treatments
Medications	Koi Accessories
Pond & Water Features	Bird Tables
Logs (from Sept through winter)	Bird Food
Coal (from Sept through winter)	

Delivery & Pick Up

Icklesham Koi
Broad Street
Icklesham
East Sussex
TN36 4AS

Tel: 01424 815200

sales@ickleshamkoi.co.uk
www.ickleshamkoi.co.uk

Online Ordering

Secure PayPal / Ebay online
ordering

Opening Times

April until end of
October

Weds - Sun
11AM - 5PM

Open every Bank
Holiday Monday

Closed Monday &
Tuesday



PETT CRICKET CLUB.....

would like to thank the following
businesses and individuals who
generously sponsored 44 cricket
matches throughout the season.
Together they donated £1,100.00.
This money has been invaluable in
the development of the club and in
particular our increasing numbers of
young players being attracted to the
club.

Norris of Blackheath
Andrew Goodsell, Pett Plumbing &
Heating
Nick & Alison Jones, Marsham
Farm, Fairlight
Wakehams Farm Shop, Fairlight
Deeks Evans, Chartered
Accountants, Hastings
R&N Building Services, Pett, Ltd
Aqarzu.com Stainless Steel
Transformance
B.J. Barker, Gatehurst Farm, Pett
A.R. Dunlop, Lunsford Farm, Pett
The Royal Oak Inn, Pett
Artraq Enterprises, Pett
Phil Button, The Butchers Shop, Pett
Road
Steve Jordan, F1 Couriers of Pett

In memory of:

The Late M.F. Strickland
The Late A.T.C. Dunlop.

Alan Parks
Patricia Dineen
Janet Dunlop & Graham Williams
Chris and Robin Hutt
Kate Cox
Collin Stanton & Julie Marshall
Mary Marshall
Pam Dunlop
Andy Norcott

A.R. Dunlop

CHILDREN'S EXPERIENCES IN THE SECOND WORLD WAR:

Between September and December this year the Year 4 youngsters of Guestling Bradshaw CEP School have been involved in an interesting project. Among all their other lessons they have been learning about life in England during World War 2. A number of the staff have been involved in this project and local folk from Pett have also been associated with it.

The pupils have been examining what life was like for children during the dark days of war and have looked at evacuation, rationing, air raids and how the war affected our local villages. They have taken part in several role-play situations and at the end of the project hope to write a play about their newfound learning.

The following, showing some of the children's writing, illustrates both their interest and enjoyment in the project.

On Thursday 18th October we dressed up as World War 2 evacuees and this is what we used: (for girls) a dress, short socks, black shoes and a cardigan and (for boys) a tank top, shirt, black shoes, black/grey cap and long socks.

After that Mr Roberts showed us some dummies with gas masks. The baby's gas mask was the biggest gas

mask and it looked like a sack but the adults had to pump a pump which is at the side to help the baby breathe. If you stopped pumping the baby would die.

Next we had cards and Mr Roberts gave out some pink cards to people who were evacuees and green cards to the host families who were going to pick the evacuees.

Then we did activities which were putting out an incendiary bomb, carrying people on stretchers and using a stirrup pump. Finally we had to solve activities using World War 2 posters and Cockney rhyming slang, which were fun.

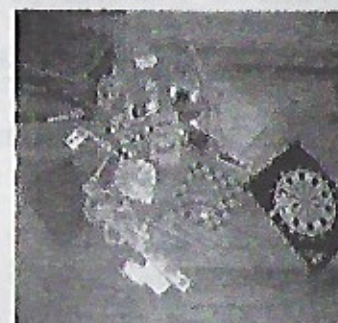
In November, Chris Harris, Jack Saunders, Ray and John Taylor came to the school. They each sat with a group of children who asked searching questions about their lives during the war (when they were very much younger). This was a really good morning: the children learning from first-hand experiences and the adults enjoying meeting the keen, interested and very polite pupils.

It was a very exciting project for the eight and nine year olds and was very well led by Janet Dann. Thank you Guestling Bradshaw, for telling us all about it and letting us share some of it with you.

GUESTLING BRADSHAW CEP SCHOOL - YEAR 4, WORLD WAR TWO PROJECT:



(1)



(2)



(3)



(4)



(5)

- (1) Picking evacuees
- (2) Childrens games WW2
- (3) Mr Roberts as WW2 policeman
- (4) In the bomb shelter
- (5) Using a stirrup pump

New Beach Club

Pett Level Road, Pett Level. Tel 01424 812080

GREAT FOOD AT GREAT PRICES

Our award winning chef, Clive is proud to offer our special Christmas menu. Call 01424 812080 for more details.

DECEMBER ENTERTAINMENT GUIDE

Saturday 1st Family Disco 8.30pm
Sunday 8th Family Disco 8.30pm
Saturday 15th Family Disco 8.30pm
Saturday 22nd Family Disco 8.30pm
Monday 24th Christmas Party 7.00pm

BAR NOW OPEN FROM 5.00PM



Dawn Turner
MHT ICHT
Reflexology, Indian Head Massage
and Traditional Usui Reiki
Fully Qualified and Insured Practitioner
1 Watermill Lane
Pett East Sussex TN35 4HZ
Phone: 01424 812740
Mobile: 0790 1591696
E-mail: dawnannturner@btinternet.com

Registered Member of the Federation of Holistic Therapists

VILLAGE VOICE

Do you have an event you would like to let everyone know about?

If you do then why not contact Sylvia Gutsell on 812544 who will be happy to talk to you about your event and include it in the Rye Observer 'Village Voice' section.



01797 229 204

Pett Property Services

Local Property and Land Maintenance

Call us for a FREE No Obligation Quote

Full Gardening Service

Full Handyman Service and Home Repairs

Painting and Decorating

Your Local, Friendly and Affordable Maintenance Company

For more information and examples of our work visit: www.pettpropertieservices.com

2 Station Cottage, Station Road, Winchelsea, East Sussex TN35 4JR Tel: 01797 229 204 or 07786 54002

PETT PARISH COUNCIL - 2007/2008

Councillors	Address	
Cllr. Andrew Dunlop (Chairman)	1 Lunsford Farm Cottage, Pett	
Cllr. Jillian Green (Vice Chairman)	'October', Pett Road, Pett	
Cllr. Dr. Arthur Holman	Sea Bank, Chick Hill, Pett	
Cllr. Martin King	1 New Coastguard Cottages, Toot Rock, Pett Level	
Cllr. Brian Roberts	2 Coastguard Cottages, Pett Level Road, Pett Level	
Cllr. Paul Stapley	Bower Cottage, Pett Road, Pett	
Cllr. Brian Woodcock	Hilher Green Cottage, Pett Road, Pett	
Clerk		
Bob Hodgson	17 Barnfield Close, Hastings TN24 1TS	01424 716232
	e-mail: bob.pettcc@yahoo.co.uk	

RESPONSIBILITIES

Pett Village Hall Management Committee	Cllr. Jillian Green
Pett Sports Association	Cllr. Paul Stapley
Police Community Consultative Group	Cllr. Brian Roberts
Rother Association of Local Councils Representative	Cllrs. Brian Woodcock, Paul Stapley
Sussex Association of Local Councils	Cllrs. Andrew Dunlop, Martin King
Flood Wardens	Cllrs. Brian Roberts, Andrew Dunlop
	Co-opted member - District Cllr. Robin Patten

Rother District Council (Marsham Ward)

Cllr. Roger Bird	57 Battery Hill, Falholt, Hastings, TN35 4AL	01424 813636
Cllr. Robin Patten	6 Old Coastguard Cottages, Pett Level Road, Pett Level, TN35 4EH	01424 812479

East Sussex County Council

Cllr. Carl Maynard	The Burrow, 29 Baldelew Down, Westfield TN37 7NJ	01273 481578
--------------------	--	--------------

Village Hall Committee

Name	Telephone No.	Responsibility
Phil Button	812148	Chairman
Ray Barden	812551	Vice Chairman
Jeanette Barden	812551	Secretary
Carol Pacerini	813544	Treasurer
Derek Johnson	814829	Hall Manager & Hall Bookings
Evelyn Darnell	812615	Committee Member
Tim Jury	813620	Committee Member
Philippa Strickland	814384	Committee Member
Sally Williams	812841	Committee Member