



May 2015

PETT &
PETT LEVEL
PARISH NEWS

DIRECTORY OF ADVERTISERS

AV & IT SERVICES

A-Star Computing	41
Neil Burgess - IT & AV Solutions	35

BATHROOMS & KITCHENS

Bathrooms of Pett	44
Martins of Hawkstut	49

EDUCATION & TUITION

Buckwood School	45
Piano & Keyboard Lessons	40

FOOD, DRINK & ACCOMODATION

Bramley & Teal	34
New Beach Club	09
Stream House B & B	46
The Lookout B & B	36
The Royal Oak	42
The Ship	43
The Two Sawyers	51

GARDEN SERVICES

1066 garden Services	52
Capability Chris Garden Design	47
Castle Lawns	33
Countryside Tree Care	34
Garden Gems	32
Jems & Marsh	41
PJ Turner - Mowing, Logging, Fencing	47
S&R Landscapers	41

HEALTH & WELLBEING

Beauty by Susannah	39
Caremark	50
Country Carers	46
Dance & Exercise	37
Marsham Old People's Project	52
Mobile Hair	38
Positive Homecare	35
Tic Toc	32

HOUSEHOLD SERVICES

Conquest Cleaning	38
HARC	33
Your Key Concierge	46

LEGAL SERVICES

Funnell &Perring	50
------------------	----

MOTORING & VEHICLE SERVICES

Cinque Ports Motor Company	44
Garage on the Level	48

PHOTOGRAPHY

Yolanda Wiggins Photography	37
-----------------------------	----

PLUMBING & ELECTRICAL

A A Farnes	47
Ecoheat Sussex Ltd	48
KJ Sands Heating Services	40
Ray Barden - Need a Plumber	52
Travis Electrical	47

PEST CONTROL

Rother Pest Control	50
TJ Woodsman	48

PET SERVICES

Cats Protection	44
Wagging Tails	31

PRODUCE SUPPLIERS

Lunsford Farm	38
The Butcher's Shop – Pett	52

PROPERTY M/NANCE & BUILDING

B Walker - Flat Roof Problems	33
Chris Sherwin – 'A Man That Can'	40
Clear Up Above	31
John Cox - Building Work	50
KR Windows	36
Michael Penfold	46

STONEMASONS

Yew Tree Stone	38
----------------	----

FOR DETAILS ABOUT HOW TO
ADVERTISE IN PETT PARISH NEWS
PLEASE CONTACT US AT
pettparishnews@live.co.uk

POSTAL SERVICE

If you would like to receive a monthly copy of Pett Parish News and you do not live in the area, then we offer a Postal Service for just £12 per year.

Contact **Brenda Kirkham** on **01424 815022** or email beekirkham@tiscali.co.uk

PETT VILLAGE VOICE in the Rye & Battle Observer

If you have any articles for inclusion in the weekly Village Voice, please contact **Mary Saint** on **01424 813047** or email mary@saintfamily.net. Deadline for copy is mid-day every Monday.

LETTERS

04

BEACH

On The Beach	07
Rescue Boat	08
Rye Bay Annual Cycle Ride	10
Sea Angling Club	07
Tide Table	09

CHURCH

A Prayer for Pett	24
Church News	24
From the Rector	28
Services & Other Events	25

COUNCIL

PPC Minutes	22
-------------	----

COUNTRYSIDE

Nature Notes	19
Sussex Wildlife Trust	20
Pett Nats	21

GARDENING

Gardening Club	12
SMH Open Gardens	12

VILLAGE

Big Village Lunch	16
Coffee Morning	15
Diary & Notice Board	27
Flicks	15
Jack Barlow	17
POPP	14
Women's Institute	14
Village Hall AGM	18

INFORMATION

Bus Timetables	49
Councillors and other reps	50
Useful Numbers	52
Village Contacts	51

Deadline for copy (letters, articles, adverts, etc.) is mid-day the 15th of each month. Anything that you can get to us beforehand (especially if it is handwritten) is greatly appreciated. Copy can be sent to us by email to pettparishnews@live.co.uk or delivered to me, Mike Wilkins, at Adeleine (813206) or Sarah Adams at Seawinds (812323). **Copy must be accompanied by your name, address and phone number otherwise it may not be published.**

Every effort has been made to ensure the accuracy of the information supplied herein. However, the editor cannot be held responsible for any errors or omissions (E&OE). Unless otherwise indicated, opinions expressed herein are those of the authors of the individual articles and adverts, and they do not necessarily represent the views of the editor. The editor cannot uphold or recommend any advertiser here within this publication

Dear Readers



This month is, of course, election month and is heralded by the huge volume of election leaflets full of exaggerated claims. I think I shall coin a new collective noun – ‘an exaggeration of election leaflets’.

What some readers may not be aware of is that this month our Parish Council is also up for election. This happens once every four years.

There is a maximum number of 7 who can sit on the council, and when the deadline for nominations closed 7 people stood. This means that they are automatically elected ‘uncontested’ and will be in office from 11th May. These include 2 of our previous councillors. Their names appear on page 54. I am one of those and I hope to persuade the council to be more open and engaging with our residents, listen and take account of their views, and hopefully create more interest in local council affairs. These affairs matter because they can effect our local environment and our pocket (for example, I note that in the month that UK inflation fell to zero our contribution to the Pett element of our council tax increased by 38% from £17,657 in 2014-15 to £24,467 in 2015-16).

And finally, Sarah and I are looking for help in publishing this magazine. This could be a great opportunity for somebody to become more involved in the community. Please see page 6 for details. If you are interested then get in touch with me for a chat.

If there is anything that you want published, or any ideas that you have, then please get in touch.

Best Wishes, Mike

THE LETTERS PAGE



Dear Editor

CHRISTIAN AID IN PETT May 10th – 16th



John and Ray Taylor will again, generously, host a Coffee Morning at their home Paxstead (opposite the recreation ground) on Saturday May 9th from 10.00a.m. until noon. This will feature Fairtrade produce, cakes, raffle and a Bring and Buy stall. Hopefully there will also be plants on sale if the weather is kind.

Our Christian Aid service will take place at Pett Methodist Chapel at 10.45a.m. on Sunday May 10th and the collection there will be added to the other money raised.

There will be a limited house to house collection this year. We are finding age and health issues have affected some collectors. Moreover we realise it has become increasingly easy and convenient for people to donate online or by phone.

There will be a poster in the Church notice board giving details of how to do this but in case you are interested the website address is - caweek.org

If you wish to donate as in previous years and have not been approached there will be red envelopes in Pett Church and these would be very gratefully received by Ray Taylor at Paxstead (I will be out of the country in May this year so am not able to help)

We recognise that there are many demands on all of us for fundraising, and it can be hard to choose which organisation to support. However, we can assure you that Christian Aid always works in practical and honest ways to help the disadvantaged, so if you support it in any of the above ways we shall be most grateful.

Gill Plank and Ray Taylor

Dear Editor

FOURTH BIG VILLAGE LUNCH 2015

On Sunday June 7th communities all over the UK will be celebrating another Big Village Lunch. The aim is to get as many people as possible to have lunch with their neighbours, annually on the first Sunday in June, in a simple act of community, friendship and fun. Since starting in 2009, thousands of Big Lunches have taken place in all types of communities. In 2014, 4.83 million people took to their streets, gardens and community spaces to share the day.

Our village is no different! For the fourth year running Pett WI will be organising the Lunch at the Village Hall. This year, apart from the usual arrangements of the WI providing salads, French bread and the usual amazing Feast of Puddings (will we beat the 42 we had last year?) plus a special Magical Moment, the WI is asking you to join in by buying a ticket, bringing your main course, and contacting Mary Saint on mary@saintfamily.net or 813047 to request your favourite piece of music: classical,

pop, reggae, country and western, jazz, or whatever you like, to include on the playlist for the afternoon.

Tickets are available from TicToc Hairdressers, Phil the Butchers, or by phoning 251849. Tickets are £5 for adults, children under 14 go free (but must have a ticket and be accompanied by an adult). Any surplus after costs will be divided between local village groups.

We look forward to seeing you there – tickets are limited and sell out, so get yours NOW!

Heather Godwin

Dear Editor

PETT FLOWER SHOW 2015

Well, I am sure many of you are already planning the planting of your vegetables & flowers for exhibiting at this years Flower Show. Certainly the recent weather has been kind, & long may it last.

With this months magazine you should have received the schedule. Please can I remind you how important it is to read the rules for the entry you are exhibiting. If you need any help or advice then don't hesitate to contact any committee member. (our numbers are on the schedule).

It would be nice to see entries from the new people around the village this year. As I mentioned last month it really is just a bit of old fashioned fun, no need to feel you need to be an expert to enter. The more entries we have the more successful the show is.

The Flower Show is self funding & is run by members of the village for the village. We are now marching towards 70 years of putting this show on. As you might imagine there have been a few changes, however the biggest reason for this annual event continuing, is due to the generosity of everyone in the village. Contributions of cakes, produce, prizes & not forgetting volunteers on the day, really make this event successful.

Therefore if you would like to volunteer this year please do contact any one of us on the committee. We would love to hear from you.

As always please bring your home made cakes to the tea tent on the day. Produce such as jams, chutneys & home grown fruit & veg can be brought along on the day too.

Rachael Crouch
Publicity Officer

Dear Editor

District Councillor Robin Patten

Robin Patten retires from Rother District Council in May. I want to pay tribute to Robin and to thank him for his years of service on Rother District Council for the Marsham Ward which includes Fairlight and Pett and Pett Level. I am sure that many will wish to join in thanks.

Robin was elected to the Council in 1999. In recent years he has served as Deputy Chairman of the Council and held the finance portfolio. This has proved an onerous task but under his watch the achievement was a nil increase in the Rother part of our Council tax over 5 years and £4m removed from the budget. And it was Robin who pushed through the Fairlight Cliffs project.

The courtesy with which he has always dealt with queries and problems raised by members of the public was shown also in the Rother Council Chamber. He has regularly attended Parish Council meetings where he showed his ability to speak well and to give clear explanations.

I expect his fellow Councillors and Council staff will be sad to see him retire and many of us will feel the same. We wish him a very happy retirement and we hope he won't miss too much the journey to and from Bexhill several times a week.

**Angel Hawksley
Pett Level**

DO YOU WANT TO HELP US AT PETT PARISH NEWS?

Published every month, it is delivered free to all households in Pett and Pett Level. Whilst the costs of production are underwritten by Pett Parish Council, the magazine is not only self sufficient but also makes a profit which is returned to the Council for the benefit of the community. Without advertisers it would not be able to do this.

Currently Sarah looks after distribution (supported by a team of volunteer helpers) and I compile the magazine, as well as liaising with our advertisers. We stand in for each other when on holiday.

We are looking for a third person to join our small team, to look after our advertisers and invoicing, and to provide help in other areas. You may be relatively new to the village and are looking for ways to contribute and meet new people. You should be computer literate. Sarah and I will benefit, not only from another hand, but also with fresh ideas on ways in which we can move the magazine forward.

If you are interested then please get in touch with me, Mike Wilkins, for a chat on 01424 813206.



ON THE BEACH AT PETT LEVEL – Robin & Sarah

Hello all, we are well into Spring and we have an action-packed month this May at the Club.

The Annual General Meeting took place in April and was very well attended. There was a really positive vibe as we looked back at the past year and looked forward to the next.

April also saw live music from Something Else and The Undecided and we have plenty more lined up for the coming months.

Bank Holiday Sunday 24th May is our **Annual Charity Day** in aid of Pett Level Rescue Boat Association. The fun starts at 12 noon with stalls and activities outside as well as a barbeque and live music from 3pm. Last year we raised almost £600, a target we hope to beat!

Live music for May:

Bank Holiday Sunday 3rd: **Cut The Mustard** 3pm.

- Sunday 17th: **Jess Roberts** 2pm.
- Bank Holiday Sunday 24th: **Martin Blackman** 3pm.

Our regular event dates for May:

- **Acoustic Jam Night** is Tuesday 12th.
- **Quiz Night** every Monday 8:30pm, except Bank Holidays.
- **Free Pool** every Wednesday evening.
- **Bingo** Tuesday 5th and 19th. Eyes down 7pm.
- **Vinyl Night** Saturday 2nd and 30th 9pm.
- **Petanque** on the beach every Thursday evening 6:30pm.

A slight change to last month's events: there will be no Vinyl Night at the end of April, it will take place on 2nd May instead.

As always, we look forward to seeing you all!

NEW BEACH SEA ANGLING CLUB - Pete Drew, Competition Secretary



COMPETITION REPORT: The Angling Club got their new season under way on Sunday 5th April in bright but cold conditions. Twelve anglers put to sea and returned with over 55lbs. of fish. Catches included codling, plaice, flounder, dabs, whiting and lesser-spotted dogfish. At the weigh-in only 8oz. separated the top three positions. Overall winner was Mick Goswell with 9lb.12oz. Rod Tennant was second with 9lbs. 6oz. And new member, Bob Leatherdale, was

third with 9lbs. 4oz. The best specimen of the day was a superb whiting weighing 1lb. 12oz. landed by Mark Farley.

Our next competition (weather permitting) is on Sunday 18th May and will be fished from 11.15am-5.15pm.

We will try and fish our alternative competition date, 19th April, as a recreational day, not a competition and see what fish we can catch when we are not concentrating on competition angling.

If you are going to sea at any time, have a good trip and above all be safe.

PETT LEVEL RESCUE BOAT - Steve Hill, Chairman

April has been a routine month, so we have caught up with some necessary maintenance on the boat and continued with the training of our new crew members.



Good news: we have managed to get funding to replace our Tornado Training/Inland Boat, I will keep you updated with the progress on that. We are now in the process of raising funds to replace the main boat which will be 10 years old next year, we try to replace the rescue boat every 10 years so watch out for more news regarding that.

As I'm sure you all know by now we are totally independent and have to raise all our funds ourselves. Many thanks to all that continue to support us and please come and see what we do and how we do it on any Sunday morning during the year. We have regular training sessions for you to watch. You never know, you may want to come and join a crew.

RYE BAY COASTGUARD AND PETT LEVEL RESCUE BOAT

ANNUAL CYCLE RIDE



Pett Level Rescue Boat Association has again joined forces with the Coastguard to run this year's annual sponsored Cycle Ride which will take place on **Sunday 10th May 2015**. Start time between 8.30-10.30 hours

There will be the regular 30 mile round trip and a 15 mile course for those seeking a more leisurely ride or to cycle with youngsters. Both courses will start and finish at The Coastguard Station at Rye Harbour.

As in previous years the aim has been to raise as much money as possible for charity including Pett Level Rescue Boat, St Michael's Hospice and the Coastguard Association. If you want to join the ride without raising sponsorship, this is fine; all you need to pay is the entry fee which is **only** £5 and children under 16 go **free** but must be accompanied by an adult. Complementary refreshments are served at the checkpoints en-route and there will even be a welcoming cup of tea at the finish.

Further details of the event can be obtained from **Philippa Strickland on 01424 814384** or mail **pstrickl@icloud.com**

Previous participants will be e-mailed the entry/sponsorship forms. They will also be available The New Beach Club, Pett Level and Pett Level Rescue Boathouse.

This is a fun event which always attracts a good turnout, whether it is keen cyclists or those who want to get a bit of exercise and to raise funds for good causes.

GET ON YOUR BIKE

Philippa Strickland



The Warship Anne Trust

Presents

All about the Anne

In June 1690 a French invasion fleet entered the English Channel where it was met by a smaller fleet of Anglo-Dutch warships. Although an invasion was prevented they suffered considerable loss. The Anne lost her masts and ran aground at Pett Level near Hastings where her remains can still be seen today.

Saturday 4 July 2015
St Clement's Church
High Street
Hastings TN34 3ES

09.00 Arrival and Refreshments

10.00 Dr David Davies

Samuel Pepys's Navy

10.45 Dr Ann Coats

Chatham Dockyard in the 1670s

11.30 Break

12.00 Richard Endsor

Building the Anne

12.45 Break

13.45 Dr Peter Marsden

History of the Anne

14.30 Dr David Davies

The Normans Bay Wrecks (Author Frank Fox)

15.15 Break

15.45 Prof Robert Stone

The Virtual Anne

16.30 Finish

Tickets £10 available from the Shipwreck Museum website

www.shipwreckmuseum.co.uk

Shipwreck Museum, Rock-a-Nore Road, Hastings TN34 3DW

Telephone 01424 437452

GARDENING CLUB – Sandy Andrews



This month, we were treated to a most interesting, amusing, and informative talk on the History of Sissinghurst and the care of its roses, by Alexis Datta, former head gardener from 2004-2013. Sissinghurst has existed on the same site since the original 15th century moated castle, succeeded by several incarnations over the centuries. The Priest's House, dating from around 1600, and now in the white garden, is the oldest remaining original building. Some of the previous owners had more on their minds than protecting and preserving the castle, it even becoming a prisoner of war camp, housing French prisoners during the Napoleonic Wars! The buildings and gardens we see today, however, date back only to 1930, when the property was bought by Harold Nicholson and his wife Vita Sackville West, who quickly set about creating a home and garden from scratch. Agricultural workers were occupying the house and tower, there was no running water or electricity and the buildings were in a very poor state of repair; neither did the garden exist, save for the Kentish cobnut trees forming The Nuttery, but over the next few years, before the Second World War began, cottages were built for the workers, the house became the Nicholsons' home and the garden plan we see today had been put in place. Essentially the garden design focuses on two specific elements, straight lines and formal shapes, counterbalanced with soft, informal planting, sometimes with limited colours, such as in the White Garden and the purple border, all avant-garde notions when the Nicholsons began.

Alexis then illustrated some of the techniques used in the maintenance of the gardens - to perpetuate the formality of Harold Nicholson's plans, spirit levels and plumb lines are used to ensure the meticulous cutting of the many hedges! Part of the Head Gardener's duties involves continually monitoring the quality of planting throughout, so the distinct garden rooms are studied constantly to identify poorly performing areas or unsuitable plants, to ensure standards are kept as high as possible. Alexis showed slides of the rooms, depicting the planting throughout the seasons, displaying the efforts to maintain continuing interest. The present day gardens continue to reflect the Nicholsons' spirit and ethos, whilst introducing modern planting and techniques where these can further enhance the overall effect. In the orchard, for example, wild flowers now flourish beneath the trees, the decision having been taken to cut the grass only two weeks later, allowing the flowers to set seed and snakes head fritillaries to vastly increase since this small change took place.

Roses, particularly scented, single flowering old English roses, play a central part in Sissinghurst's gardens, the Rose garden having been designed by Vita Sackville West, using these beautiful, informally growing plants that were her favourites. Alexis explained, illustrating with slides, some of the clever techniques used by the gardening team, to create hazel arches, intertwined with the long rose stems during the winter and spring, forming domes of greenery and blooms to set the roses off to best effect during the season, whilst looking entirely natural. Similarly, the tower features roses trained to apparently climb the walls effortlessly and compliment the red brick, whilst straight chestnut poles are used to create freestanding towers to support climbers to great effect.

Alexis finished a most entertaining and personal talk with some atmospheric photos of Sissinghurst throughout the year, including some in winter, which the public do not see. She then invited questions and a further lively exchange with the members brought a great evening to a close.

Our next meeting will be on Tuesday May 12th and combines our annual plant sale with a talk from Jackie A Violet. As the plant sale is one of our few fundraising events please bring along any surplus plants, flowers, shrubs, vegetables, for members to buy. As usual we shall also be having a lucky number plant prize! This will begin at 7.00p.m., followed at

7.30 by Jackie's talk, "I am a Tulip, what are you?" This will be Jackie's second visit, her first being most amusing and very well received by everyone present.

BEAUTIFUL GARDENS OPEN FROM MAY TO OCTOBER IN



Open Gardens offers a rare opportunity to explore the secrets of hidden and private gardens which are not usually open to the public. This year's St Michael's Hospice Open Gardens programme has a spectacular list of over 50 gardens of all shapes and sizes throughout Hastings and Rother, bursting with colour and inspiration for all garden lovers.

The Open Gardens season runs from May to October with most of the gardens opening during the summer months on Tuesdays and occasional Saturdays, admission ranges from £4 - £5 per garden. Open Gardens gift vouchers are also available and provide a fantastic present for friends and family.

Gardens will be open to the public in Winchelsea, St Leonards, Icklesham, Ewhurst Green, Bexhill Old Town, Hastings Old Town, Crowhurst, Northiam, Ashburnham, Hellingly, Stonegate, Brightling, and Peasmarch. All Open Gardens can be found by visiting www.stmichaels-hospice.org/get-involved/events/event-calendar or by contacting Sally on 01424 456369 or fundraising@stmichaels-hospice.com

GOOD NEWS TO ALL GARDENERS – Tony & Sebastien

Just in time for Easter and under new Management the Harborough nursery re-opened its doors on Sunday 5th April 2015 at 10.00am.

This plant centre has been well known for the quality of its flora, shrubs, trees and the friendly service it gave its numerous customers in the past.

THE NEW TEAM

Tony Howard - garden designer and head gardener at Fairlights Hall's for a number of years - and Sebastien Haywood - designer of interiors and exhibitions – who's ambition to diversify and work in horticulture is being fulfilled - have joined forces.

The combination of their expertise and enthusiasm will endeavor to bring this splendid nursery back to life so that it can remain one of the area's favorite gardening GO TO DESTINATION.

Tony and Sebastien - who both live locally – plans do not stop there, they are also keen to diversify a little and introduce other elements which will run parallel and compliment the existing business.

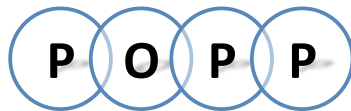
In addition to the sale of high quality plants, seeds, bulbs, tubers, shrubs, ornamental trees, top and soft fruit, compost, gifts, etc.. They intend to run courses, events, tea room, the sale of vintage garden artifacts and more – but all in good time.....

By 10.15am the car park was full and so it was all day. A log fire, welcoming glass of bubbles, home made cupcakes artfully displayed in the newly re-designed shop and an Easter egg (supplied by Hope and Greenwood) hunt were on offer to welcome the visitors who all enjoyed their visit thoroughly.

SO PLEASE COME ALONG AND SAY HELLO AND SEE WHAT IS ON OFFER

PETT OLDER PEOPLES PROJECT (POPP)

(Sheila Thomas 01797 225616 / 07774 573086
Ann Nicholls 813043)



POPP FUTURE CALENDAR

Tuesday 5 th May	Andy Robertson with his keyboard.
Tuesday 12 th May	Keith Osborne Music for Health
Tuesday 19 th May	Alison Bowler Seated Dance exercise.
Tuesday 26 th May	Thai Chi Annie Crier / Board games.
Tuesday 2 nd June	John Taylor Talk & Slides of Pett Village.

Breaking News On the 28th April Popp took all our members on a coach trip to the Del La Warr Pavilion in Bexhill to see the Ladybird Book and Art exhibitions. The trip included a 2 course luncheon in the restaurant overlooking lovely sea views.

Thanks to Rambler Coaches and Sponsors for this lovely day enjoyed by all.

Nail Technician – Sheryl Tucker 5th May

Head & Shoulder Massage Antonello Bruce - Tuesday 12th May

Toe nail cutting service for any person in the area having difficulty in reaching their feet. Home visiting service. Will also assist with foot hygiene for the elderly and disabled. If interested please contact Sheila Thomas on 01797 225616 – also at Popp weekly – donation to centre.

Hearing Aid Servicing – Help is available at Popp centre weekly for anyone in difficulties with their hearing aids. Or batteries. Many thanks.

PETT WOMENS INSTITUTE – Heather Godwin



Last month Sally Watson from Hearing Dogs for Deaf People – the national charity that provides dogs to alert deaf people to important sounds and reduce the isolation of deafness – came along with the owners of two delightful Hearing Dogs, Kia and Meg, who demonstrated their amazing skills. The difference these dogs have made to their individual owner's life is immeasurable, giving both of them confidence and security indoors and out.

We also welcomed Margaret the Hat-Queen, who makes and hires out beautiful creations with the proceeds going to Hearing Dogs - so the person chosen to go to the Buckingham Palace WI Centenary Tea Party in June was delighted!

At the May meeting the vote to support, or not support, the winning Resolution chosen by the whole of the WI from several, will take place – the Resolution to vote on is: 'Failing to care – assessment of need in long-term care – This meeting calls on HM Government to remove the distinction between nursing care and personal

care in the assessment of the needs of individuals, in order to advance health and wellbeing'. The results from each Institute are then passed on to the delegates lucky enough to be going to the Centenary AGM at the Albert Hall in June.

There will also be a Bring & Buy stall – so do come along to Pett Village Hall on Friday 15th May at 2.30pm – a warm welcome awaits – plus a lovely tea!

Please find all the arrangements for the Big Village Lunch in the relevant article in the Pett Parish News – all proceeds from this fun event will go towards supporting local village groups.

Don't hesitate to buy your ticket – once they're gone – they're gone!

FLICKS IN THE VILLAGE FILM SOCIETY

On Thursday 7 May Flicks in the Village will be showing **THE IMITATION GAME** (12), a nail-biting race against time, following Alan Turing (pioneer of modern-day computing and credited with cracking the German Enigma code) and his brilliant team at Britain's top-secret code-breaking centre, Bletchley Park, during the darkest days of World War II. Turing, who grew up in St Leonards and whose contributions and genius significantly shortened the war, saving thousands of lives, was the eventual victim of an unenlightened British establishment, but his work and legacy live on.

Benedict Cumberbatch and Keira Knightley star as Turing and his ally and fellow code-breaker Joan Clarke, alongside a top-notch cast, including Matthew Goode, Mark Strong, Rory Kinnear, Charles Dance, Allen Leech and Matthew Beard.

Please do not forget, all are welcome to join the Society and enjoy an evening watching a film for as little as £4.00 per show with like-minded people in the local environment of Pett Village Hall. If you wish to know more about the Society, please email me on chris@saintfamily.net or telephone on 813047. Alternatively, you can view all programme details on www.pettnet.co.uk. All films start at 7.30pm with refreshments served from 7.00pm.

Chris Saint and the Flicks Team - Telephone 813047



COFFEE MORNING – Sally & Helen

A big thank you to everyone who supported our Easter coffee morning our Raffle raised £17.00. Well done to our winner Mr John Taylor.

Next date for your Diary is **Wednesday 5th May 10.00am till 12.00** we are always on the **first Wednesday** of every month so pop that in your diary so you don't forget us!



We look forward to seeing you.



PETT WI
FOURTH
BIG VILLAGE
LUNCH

& FEAST OF PUDDINGS
PLUS THE PETT PARISHIONERS' PLAYLIST

SUNDAY JUNE 7th

12.30 - 4pm

PETT VILLAGE HALL

ADULTS: £5

CHILDREN UNDER 14: FREE

(MUST HAVE TICKET & BE ACCOMPANIED BY AN ADULT)

You provide: your main course, drink, glass, plate, knife and fork
We provide delicious salads, French bread, a Feast of Puds and
a Magical Experience

Tickets available from TicToc Hairdressers, The Butcher's Shop
or by phoning 01424 251849

ANY SURPLUS WILL BE DONATED TO
LOCAL VILLAGE GROUPS

JACK'S BACK WHERE HE BELONGS

PETT racer Jack Barlow makes successful return to the track – taking 3rd at Brands Hatch



After a huge testing accident curtailed his entire 2014 season, Jack Barlow bravely climbed back into the cockpit of a racing car at Brands Hatch last weekend (4/5 April) and proved that he had lost none of the skills that made him a fans' favourite.

Almost a year to the day since he rolled his Formula Ford single-seater at Thruxton in Hampshire, the brave 19-year's dogged determination saw him make a successful return to top-flight competition.

Having signed a last-minute deal with new squad MBM to contest the inaugural MSA Formula series, Jack went into the championship's opening weekend at the former Grand Prix circuit with precious few practice laps under his belt. Nonetheless – and despite some teething issues with his freshly-built car – the Pett driver posted the 7th-fastest time in qualifying.

Sadly heartbreak was to follow in the very first race of the new championship when a start line melee entangled the MBM man. His resultant DNF (did not finish) put him at the rear of the field for the following race and it was in this encounter that Barlow was able to demonstrate his flair.

He charged from 19th position at the start, to carve his way up the order and take the chequered flag in a fine 7th place.

Buoyed by his performance, Jack went into the weekend's third race with the added bonus of starting from P6 on the grid, albeit that this put him on the outside of the track for the run into the world-famous circuit's daunting first corner, Paddock Hill Bend. A terrific getaway from the line saw the former karting multiple-champion pass two cars to take 4th place. With the leaders also able to make a clean breakaway, Jack was left to circulate on his own for the remainder of the race.

However, in a dramatic turn of events, long after the prizes had been handed out, he was boosted to 3rd – albeit provisionally – after race-winner Lando Norris was excluded from the result for ignoring the officials' flag signals following an accident. Norris has lodged an appeal, which will be considered at the next round, to be held at Donington Park (18-19 April).

Jack currently lies 6th overall in the championship with a further 27 races to go until the season finale, back at Brands Hatch in October (10-11).

PETT VILLAGE HALL MANAGEMENT COMMITTEE AGM

Monday 11th May 2015 at 7.30pm in the Village Hall

The PVHMC invite all residents and hall users to the AGM followed by refreshments after the meeting.
Feedback is welcome and of great value.
Please attend and make your views known.

What could be improved?

How can the hall be used more effectively?

Have you got skills and/or knowledge which could contribute to the operation of the Hall?

Do you feel you could make a contribution to the committee?

Are there any questions for the committee?

The committee would welcome new members; if you feel you can contribute and are interested in joining the team. Come along or please contact: Chairman Ray Barden on 01424 814717/ ray.barden@btopenworld.com or Secretary Sarah Adams on 01424 812323/ sarahadams333@me.com.



QUIZ NIGHT



Thank you to all who came and made this such a fun evening

We raised £315.54 for the Hall Funds

Hope to see you in October

NATURE NOTES – Alan Kenworthy

The early spring flowers are well out now, and in common with most other places our garden is showing mostly yellow ones. There are lots of daffodils, lesser celandines, some Forsythia, and some dandelions. They all look wonderful until you look a bit closer and see that almost every flower has got tiny blue-black beetles inside. They are pollen beetles and they are doing what comes naturally, eating pollen.



Pollen is amazing stuff. First of all, it is very, very small. The smallest pollen belongs to the forget-me-not and it is only six microns in diameter – that is 6 thousandths of a millimetre. (The largest, maize, is about 100 microns across and more easily seen.) You would need a good microscope just to see the rough shape of the pollen grains of any plant. If you wanted to see each grain in detail, then it would be handy to have a scanning electron microscope in

your potting shed. Pollen grains are the equivalent of sperm in the animal kingdom, and are what transports the male genes to the seeds of the plant. As in the animal kingdom, each plant species wants to fertilize, or be fertilized by plants of its own species, and plants achieve this by making the pollen grains unique. So each plant produces pollen grains that have a certain size, shape, and surface texture. Only when a matching pollen grain lands on the female stigma does the stigma accept the pollen and allow fertilization to occur.

Different plants also produce pollen of different colours. Yellow flowers, like the ones that the pollen beetles are so fond of, tend to have yellow pollen, and that is the sort of default colour. But if you examine the pollen baskets of bumblebees as I am in the habit of doing you find many different colours – comfrey has pale straw-coloured pollen; red clover has dark grey, almost black pollen. One of the most startling colours is that of Viper's Bugloss which has very dark blue pollen. Just occasionally, I have seen bumblebees with bright red pollen on their legs, but so far I have yet to see which plant they have collected it from.

The equivalent to 'man cannot live by bread alone' in the insect world would be 'insect cannot live by nectar alone' and one feature of pollen is that it is rich in protein. For most insects that eat pollen, it is their only source of protein. There are three main groups of insects that feed on pollen – the bees, of course, including the bumblebees and the solitary bees I wrote about last month. Then there are the beetles – not only pollen beetles, but there are a range of other beetles like the thick-kneed flower beetle and some of the longhorn beetles as well. Another group – the second largest group after the beetles – are the flies (Diptera), though only a few of them are pollen feeders, the most conspicuous of these being the hover flies and the soldier flies. But what about the moths and butterflies I hear you ask? Well,

in the main, the adult insects don't feed on pollen, they only take nectar (and some of the moths don't feed at all as adults). Whilst their caterpillars may take a bit of pollen, they are probably more interested in your brassica leaves.

The plant and pollinator relationship is a neat one, they each get something from it, but the interesting thing about the relationship is that the four groups of insects mentioned above all evolved before the plants developed their showy flowers. They developed flowers when the primary disadvantage of having their pollen eaten was outweighed by the advantage of having their pollen moved from flower to flower and plant to plant. This happened about 140 million years ago when plants started to become more attractive to insects by evolving their colourful and scented flowers. So without the pollinators, there wouldn't be such flowers – what a dull thought.

For pictures of some of the flowers and insects mentioned see:- www.pettnats2.blogspot.co.uk.

STOP PRESS! Check out the wild flowers along Rosemary Lane – wood anemones, bluebells, primroses, stitchwort and more – stunning!

NATURE AT THE HEART OF POLITICS

By Mike Russell of the **Sussex Wildlife Trust**

Another general election is upon us, another chance to raise the environment and wildlife as fundamentally important issues, another potential groan of disappointment as they get buried in the melee of bruising political debate centred on the management of the economy. Yet the environment, wildlife and the economy are inextricably linked; a healthy economy is underpinned by a healthy environment.



People also care about the environment and wildlife; a recent poll suggests that over 90% of people surveyed agreed that our wellbeing and quality of life is based on nature and biodiversity (EU flash barometer survey June 2013). Numerous studies show that a healthy environment and regular contact with wildlife have a number of benefits for communities, people with both physical and mental health problems and for those confined to their homes and in residential care. But these benefits are not measured, they don't have a pure economic value and therefore are not valued by decision-makers, hence over 60% of our species have declined in the last 50 years and continue to do so at an alarming rate; our actions as a society have undermined nature's ability to support us, just as our need for that support has increased.

In an effort to try and get the environment right up to the top of the political agenda, The Wildlife Trusts, along with the RSPB, are proposing to all parties the implementation of a Nature and Wellbeing Act to bring about the recovery of nature within a generation, for the benefit of people and wildlife. Loss of habitats, plants

and animals affects how our environment soaks up extreme rainfall, absorbs carbon, and provides clean water. It affects the health of our soils, fish stocks and pollinators. It affects how we can adapt to climate change, the liveability of our cities and the productivity of our countryside.

Legislation to protect our wildlife has largely failed to halt decline in most species; protecting individual species will only work if the habitats, climatic conditions and the diversity of nature on which those species depend are also maintained. This proposed Act would place nature at the heart of how decisions are made about health, housing and other development, education, economic growth, flood resilience and social cohesion. The protection and creation of healthy woods, rivers, meadows, parks and wild land around us in local, regional and national networks would help achieve objectives in all these areas.

We must get away from the idea that wildlife and the environment is a block to economic growth, an idea that has strong political currency at the moment. Politicians, decision-makers need to take into account people's desire to live in places where wildlife can flourish, they realise the benefits that this brings to their lives, it is about time that those who make the decisions around their lives also realise it.

More information on the proposed Nature and Wellbeing Act can be found on the Trust's website www.sussexwildlifetrust.org.uk and click on Our Work/Conservation.

PETT LEVEL NATURALISTS SOCIETY – Brenda Kirkham

We had a change of speaker in March and Andy Dinsdale came to talk to us about beach combing in Pett and his search for a sea bean. He found many items which had carried on the sea's currents and did amazingly find some sea beans which had travelled all the way from South America.



Richard Thompson will be giving us an update on Mallydams Wildlife Hospital on the 15th May.

Please come along and support us, all visitors are very welcome as well as new members.

PETT PARISH COUNCIL

Minutes of the Meeting of Pett Parish Council duly convened and held on Tuesday 17th February 2015 at Pett Village Hall



Present: Cllr. A. Dunlop (Chairman), Cllrs J Green, M King, P Stapley, D Richards and J Dean.

Also in attendance: Cllrs R Patten and R Bird, Sarah Willoughby - Clerk and 4 members of the general public.

1673. Apologies: Apologies were received from Cllrs Ware and Maynard

1674. Minutes of Previous Meetings:

Minutes of the Meeting held on 20th January 2015 were agreed and signed as a correct record of the meeting.

1675. Matters arising – None

1676. Declarations of Interest: Cllrs Stapley and Richards declared a personal interest in agenda item 11 and Cllr Dean expressed an interest in agenda item 8 and 11.

1677. Dispensations – None

1678. Chairman's Announcements: Cllr Dunlop announced the passing of Danni Bourne, who had been a long term resident of Pett. She was a forthright lady who made a significant contribution to the village. She will be sadly missed.

1679. Public time.

The Chairman, with the agreement of Members, adjourned the meeting so as to allow elected Representatives and any members of the public to address the meeting in relation to the business to be transacted at the meeting.

Elected Representatives and Members of the public addressed the meeting; details of comments/questions and Reports are available in the Record/Log of Public Time, which is available for inspection at Council meetings.

1680. Community Speedwatch: Following discussion it was unanimously agreed to pay £323.96 toward the cost of a speed measuring device for use by the community speedwatch group. This represents a third of the cost of the device, which will be shared by Guestling and Fairlight parish councils.

1681. Elections 2015: Following discussion it was agreed to put an advert in the parish news encouraging all who are interested in becoming a parish councillor to put their name forward. New councillor information packs will be available from the parish clerk.

1682. Pett Flower Show: Following discussion it was agreed that Pett parish council will cover the cost of toilet hire for the flower show in 2015, as has traditionally been the case. The cost of hiring toilets is less than the cost of repairing damage to the public toilets caused by vandalism.

1683. Allotments: Following discussion it was agreed that as the lease for the allotments prevents any cutting of trees around the allotments, a waiver will be requested from the landowner to carry out the work. Specifications, the term of the waiver and costs will be agreed with the landowner. Cllr Stapley to make a formal request to Pett parish council on behalf of the allotment association. Any work permitted will probably be carried out during winter 2015-16.

1684. Parish Website: Following discussion it was agreed that Pett parish council will take over ownership of the website. In the absence of a volunteer to manage the website, the clerk will assume the role of manager.

1685. Reports from Members and Representatives on external meetings, conferences, training courses and other similar events:

SALC: No report.

RALC: No report

Police Community Group: No report

Pett Village Hall: No report

Pett Sports Association: The sports association will meet in March.

Flood Warden: No report.

Pett Older People's Project: Cllr Richards passed on Pett Older People's Project's thanks to the council for their recent donation.

1686. Finance:

a) Authorisation of payment of accounts:

The following payments were presented for payment and approved:

Sarah Willoughby	Clerk salary and expenses			336.05
Impression IT	Printing costs parish news	9483		288.91
LGPS/ESPF	Contribution			91.56
HMRC	Payment			7.80
Community Speedwatch online	Handheld speed detection device	201501270022		323.96

1687. Correspondence:

The environment agency has refused to carry out work to address the bank slippage at Marsham Brook. Cllr Patten to follow up.

A public consultation is being held in respect of post office services in Pett, the closing date being 27th March. Views on the service being offered, hours, location, etc can be registered at postofficeviews.co.uk. Clerk will forward details for inclusion in the parish news.

1688. Planning:

The clerk had circulated details of planning matters, details of which had been included on the schedule attached to the agenda.

RR/2015/268/P – Following discussion it was agreed to support approval.

1689. Parish Matters:

- a) Village Amenities – Management of the noticeboard at Pett Level will be taken over by Cllr King.
- b) Footpaths – There has been a lot of dog mess left behind on the footpath (1) beside Pett church recently. All dog walkers should clear up after their dog; a sign to this effect will be erected. Footpath 6 near Elm Lane has been cleared. Clerk to request a sign is erected.
- c) Highways – A new culvert has been installed outside Rose Cottage and the pot hole outside the recreation ground has been filled in by ESCC. Overhanging trees on Chick Hill, which are leaning in to the road are still a concern. The bank outside Bracken was very overgrown, obscuring visibility. Andy Norcott, of Gatehurst Farm has cut the bank at no charge to the Council. The bank outside the Methodist church should have been cut today (17th). The verges outside Wayside and Breanross have been severely damaged by cars and heavy vehicles parking on them. Clerk to apply for a licence to plant trees in order to protect the banks.
- d) Community Safety – No report
- e) Environmental Issues – No report

There being no further business the meeting was closed.

PETT CHURCH NEWS – Meriel Deasy & Angela Hawksley (Churchwarden)



EASTER

Thank you to all those who supported and shared the Easter services. The Good Friday Procession of Witness was well supported and we do thank Wendy Hatch and Keith Miller for all their help. As always, thank you to the Flower Ladies who made the church look beautiful and to all those who donated flowers in memory of loved ones.

QUIZ NIGHT

Yet another fun village evening – well done a church team for coming second!

PREVIOUS RECTORS

Norman Greenfield and Robin Balch have recently died. We give thanks for their ministry in our parish and our thoughts and prayers are with their families.

MAY

This becomes quite a busy month – Christian Aid Week, Rogation Sunday Walk. There is more about these events elsewhere in the magazine.

FROM THE REGISTERS

There is nothing from the registers.

On a personal note – may is thank everyone for all their care, Kindness and good wishes following my recent accident. I hope to be back to my normal active self in the next few weeks.

A PRAYER FOR PETT

Lord, we give thanks for the village in which we live.

We rejoice in the blossoming of the spring flowers and the colour and scents that they give to us.

All those who love gardening will be planning for the spring planting, both for flowers and vegetables – we pray for a happy season.

We look forward with hope and thanksgiving.

THE REVEREND ROBIN BALCH

Robin Balch was diagnosed a few months ago with a brain tumour and he died on 30th March 2015 at a hospice near his home in Chesterfield, Derbyshire.

Robin was Rector of the Benefice of Pett, Guestling and Fairlight from 1993 to 2001. He was the last Rector to live in Pett. He found the task of leading three parishes quite tiring but we always felt that Pett was important to him. We remember him and his wife Eileen with love and gratitude.

CHURCH SERVICES IN MAY

3rd May 9.30am Holy Communion Revd Kay Burnett

10th May 10.45am Christian Aid Service at Methodist Chapel

17th May 8am Holy Communion Revd Kay Burnett
(at St. Nicholas, Pett Level)

24th May 9.30am Holy Communion Revd Kay Burnett
(Whitsun)

31st May 10.30am **Benefice Holy Communion at Pett** Revd Kay Burnett

If you are not a regular churchgoer, do think of coming to one or more of these services. Pett Church is not a club where everyone knows each other. It is a friendly group of people who worship and pray and sing in church on a Sunday. If this is not your cup of tea it would be good if you could come along one Sunday and tell us why it isn't.

Other church events (details on church notice board)

9th May 10-12pm Christian Aid Coffee Morning at Paxstead

23rd May 10pm Lighting of Fairlight Beacon and Barbeque

24th May 12.30 pm Celebration Picnic at St.Peter's, Fairlight after 10.30 service

27th May 7.30pm Deanery Meeting at Northiam

31st May 3pm Rogation Walk (marking the parish boundary) plus tea

18th June pm Parish Consultation and Party in Pett Village Hall

12th July 10.30am Sea Sunday service on the beach

12th/13th September

Flower Festival and Harvest Festival

12th December

Christmas Fair

LIGHTING THE BEACONS ON 23RD MAY

All over Sussex beacons will be lit on the evening before Whitsunday. Why?

The beacons will be lit to celebrate the birth of the Christian Church by the coming of the Holy Spirit. It will also be a celebration of the start of the new Diocesan strategy for vision and growth. The symbolism is that Jesus is the light of the world.

Everyone is invited to witness the beacon lighting at Fairlight from wherever he or she likes. There should be quite a good view from the footpath at the side of Pett Church.

On the Sunday there will be a celebration picnic at St. Peter's church in Fairlight. The plan is to bring your own picnic and children will be very welcome.

BENEFACTURE ROGATION DAY WALK 2015

A ROGATION WALK is being arranged for Sunday the 31st of May 2015. Please join us for a 45 minute walk taking in three Boundary Stones that you probably have never noticed before!

We will gather at St Mary & St Peter Church in Pett Village for a 3:00pm start.

You are encouraged to bring your pets, which will be blessed at the end of the walk. And remember to wear boots if the weather has been/is wet!

On the walk we will stop occasionally for the opportunity to offer a prayer about the fields, nature, farming, creation, etc. Then at 4.00pm at the Pett Village Hall Boundary Stone we will have a short service thanking God for the fruit of the fields (both plants and animals) and bless all the pets people have brought with them.

At the Parish Boundary stone we may even Beat the Bounds a custom that goes back to Norman times. We can beat the Parish Boundary Stone with hazel sticks to remind us where the parish boundary lies and, if we can find a young boy willing to do this, we can turn him upside-down and pretend to bump his head on the stone! This is a revision of the custom whereby young boys were taught where their parish boundaries lay before people were able to read or write. This information was passed down from father to son in this way in the days before there were maps. The boy would afterwards be given a treat (stay up late to watch TV today, rather than an early finish working the fields!)

After the brief service we will all proceed to the Methodist Chapel/Hall where we will partake of some refreshments before leaving for home about 5.00pm

Do come and join in this fun walk as we remember the ancient Rogation Festival. This is an easy walk for children and adults (three stiles to climb all with dog access). Everyone and their pets will be most welcome.

COMING VERY SOON

Exploring the Christian Faith

A discovery and discussion group for those wanting to investigate the claims and basics of the Christian faith.

Suitable for new Christians, young Christians, those wishing to be confirmed and those who want to explore issues of faith.

To register interest email admin@fairlightandpett.com or phone 01424 812799

WHAT DO WE NEED THE CHURCH FOR?

- **The Bible is just a load of made-up stories.**
- **They talk a lot of funny words in church.**
- **The church hasn't done anything for me. I'd rather go to the pub.**
- **The church isn't for people like me.**
- **There is no future for the church.**

If you feel even a bit of sympathy with any of these comments, think about coming to the discussion/debate/consultation/party on **Thursday 18th June** at Pett Village Hall at 7pm.

There will be further details in next month's magazine and on the church noticeboard.



Standing up for Jesus

All over the world people are being persecuted, some because of their faith, others for their political views and others because they are despised or vulnerable. It is a cruel, unjust and unequal world and whether we like it or not we are complicit in the status quo.

In recent weeks Christian persecution has been highlighted in the news. North Korea is the worst place in the world to be a Christian but Christians are targeted in India, Pakistan, China, Egypt, Nigeria, Kenya and Iraq to name just a few countries. Persecution may take the form of being denied work, or land, or a place to live; rape, imprisonment, torture, enslavement, or being singled out and shot. In some countries churches are raided and burnt down.

The Bishop of Baghdad recently reported the case of two 8yr old boys whom he had baptised as babies. When the Islamic extremists invaded their territory the family were killed and the boys taken prisoner. They were given the choice of pledging allegiance to Allah or death. They replied, “we have always followed Jesus,” so were immediately beheaded.

Sadly there have been times in history when Christians have been the perpetrators of hate and revenge but this has never been authorised by Jesus. In His life, Jesus valued all people including thieves, financiers, prostitutes and people of other nationalities. When Jesus Himself was arrested, falsely accused and crucified, He set the example by not retaliating but asking God to forgive His enemies. He warned His followers, “Everyone will hate you because of me,” and He said, “When you are persecuted, flee to another place.” In his Easter message the Archbishop of Canterbury said revenge is not part of the Christian ethic.

Christians know this world is a broken and temporary world; God has prepared for us something far better. It may not be a popular recruitment strategy but Jesus urges His followers to take up the cross, deny themselves and follow Him. Failure to do so He says, means ‘we are not worthy to be His disciples.’ He went on to say, “Whoever finds His life will lose it and whoever loses His life for my sake will find it.” In other words, if we live for this world we’ll miss Heaven. Far better to live for heaven and miss out on this world – which is the choice those two boys made.

In the UK some Christians experience mild persecution. It may not be long before it turns more violent. If that should happen, would you have the courage to stand up for Jesus? Do you think He worth it, if not why?

Richard Barron

PARISH NOTICE BOARD & DIARY

PETT VILLAGE HALL 500 CLUB DRAW

Congratulations
1st prize goes to Steve Harris
2nd prize goes to Janet Crook



JEMPSON'S BUS

'Hail & Ride' to the Superstore. Every Friday calling at Allards 9:15 and progressing to the top of Chick Hill by 9:20 - departs Jempson's at 11:30. The bus will stop when hailed if it is safe to do so. Nominal charge of £1 return.

BUS SERVICES

See page 53 for revised 347 service. Also, a **101** bus now serves Pett Level. Sadly, because of space, we cannot provide the timetable this month but look at the Stagecoach website for more details

THE POST OFFICE

Is now open on Monday and Thursday from 12.00 to 3.00 pm in the Pett Methodist Chapel.

PARISH DIARY

WEEKLY ACTIVITIES			Where	Whilst every effort is made to ensure this is up to date we are not always told of changes – you should check with event organisers for specific times and dates.
Mon	6.30pm	Pilates	VH	
Mon	7.30pm	Village Choir	MC	
Mon	9.30am	Flowerpots Playgroup	VH	
Tue	10.30am	POPP	VH	
Tue	7.00pm	Pole Dancing	VH	
Wed	10.00am	Badminton	VH	
Wed	6.00pm	Zumba	VH	
Thu	9.15am	Dance & Exercise Classes	VH	
Fri	10.00	Badminton	VH	
Fri	2.00pm	Latin American & Ballroom Dancing	VH	
MONTHLY & BI-MONTHLY ACTIVITIES			Where	Date this month
Mon	7.30pm	Village Hall Committee	VH	11 th AGM
Tue	7.30pm	Pett Parish Council	VH	19 th
Wed	11.00am	Rambling Club	NBC	13 th
Tue	12:05 – 12:35	Mobile Library	Church	19 th
Tue	7.30pm	Gardening Club	VH	12 th 'Tulips & Plant Sale'
Wed	10.00am	Village Coffee Morning	VH	5 th
Thu	7.00pm	Flicks	VH	7 th 'The Imitation Game'
Fri	7.30pm	Pett Nats	VH	15 th 'Mallydams'
Fri	12.30pm	Pett Womens Institute	VH	15 th 'AGM Motions'
Sun	3pm	Vibele – laughter class	VH	3 rd

VH Village Hall; **NBC** New Beach Club

Afraid, alone, in pain

Be the answer to Loko's prayer this Christian Aid Week.



Loko's choice in life is simple: 'If I can't collect firewood, my children will die.'

Four times a week, in a remote corner of Ethiopia, Loko makes a back-breaking eight-hour trip to gather wood. It's a task she dreads, but she steels herself to do it because if she doesn't her children will starve.

She prays to God as she walks. 'I ask him to change my life and lead us out of this,' she says.

Just £5 could give Loko a loan to start her own business buying and selling tea and coffee, freeing her from her desperate task and allowing her to spend more time caring for her family.

This Christian Aid Week, you can help transform the lives of women like Loko.

From 10-16 May, churches the length and breadth of Britain and Ireland will come together to pray, campaign and raise money to improve the lives of people like Loko.

Every year, 100,000 volunteers demonstrate God's love for the poor by taking part in house-to-house collections for Christian Aid. This fantastic witness is a chance to take the mission of the church into your community.

Find out how you can play your part at caweek.org



UK registered charity no. 1105851 Company no. 5171525 Scot charity no. SC039150 NI charity no. XR94639 Company no. NI059154 ROI charity no. CHY 6998 Company no. 426928 The Christian Aid name and logo are trademarks of Christian Aid. Christian Aid is a key member of ACT Alliance. © Christian Aid November 2014 15-J3099 Photo: Christian Aid/Andrew Testa/Panos



DOG LOVERS WANTED

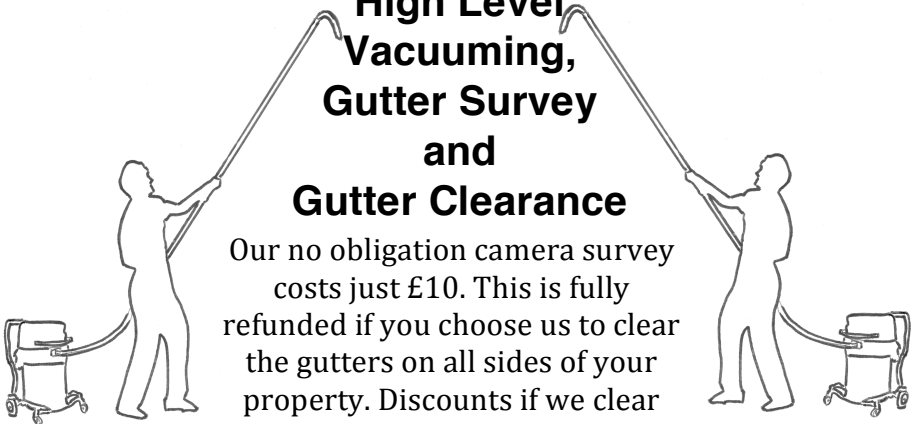
- Do you have experience of owning a dog?
- Are you at home during the day?
- Do you enjoy walking?
- Do you currently have one well socialised, friendly dog, or no dogs of your own?
- Can you open your home to a dog for its holiday?

For more information on becoming a Wagging Tails carer visit **www.waggingtailsuk.co.uk/tn** or call Lesley on **01424 814695**

CLEAR UP ABOVE

High Level
Vacuuming,
Gutter Survey
and
Gutter Clearance

Our no obligation camera survey costs just £10. This is fully refunded if you choose us to clear the gutters on all sides of your property. Discounts if we clear your neighbours' gutters too!



HONEST, TIDY, RELIABLE AND LOCAL

Call **CLEAR UP ABOVE** on 01424 814827 or 01424 812915
mobile: 07522 919085 email: info@clearupabove.co.uk



Tic Toc

Hair Couture

NOW OPEN!!!

**3 THE LYNDENS
PETT ROAD
PETT**

OPENING HOURS

MONDAY	9-1
TUESDAY	9-5
WEDNESDAY	9-6
THURSDAY	9-5
FRIDAY	9-5
SATURDAY	9-2

LATE NIGHT AND EARLY APPOINTMENTS AVAILABLE.

CALL US ON 01424 814 554

APPOINTMENTS ARE NOT ALWAYS NECESSARY.

FREE CONSULTATIONS AVAILABLE.

PLEASE NOTE THAT A SKIN-TEST IS REQUIRED 48 HOURS PRIOR TO ALL COLOURING SERVICES.



GARDEN GEMS

at WAKEHAMS FARM
Pett Level Road
Fairlight, TN35 4ED

Annuals, Perennials, Cottage Garden Plants
Summer & Winter Bedding, Herbs & Vegetable Plants
Hanging Baskets & Tubs, Shrubs, Climbers
Trees, Fruit Trees, Fruit Bushes & Canes, Bulbs

★ **DAVID AUSTIN ROSES** ★
Climbing Roses, Celebration Roses, Tea Roses
Floribunda Roses, Shrub Roses, Patio Roses

★ **New For 2015 STANDARD ROSES** ★

@ Wakehams Farm Shop
Fresh Farm Produce, Local Home Made Cakes
Jams, Compost, Pots & Garden Ornaments & Much More

Open 7 Days a Week If have not got it in stock we will try and source it for you



**HAVING A CLEAR OUT?
HARC Charity Shops**

collect goods you no longer need from your home. We collect beds, furniture, electrical goods and clothes, providing goods are in saleable condition.

Please ask about our house clearance service

FREE, FAST COLLECTION BY OUR FRIENDLY DRIVER

To arrange a personal collection please call **01424 720500/ 722164**
Monday - Saturday 10am to 4pm
Or email queensgroad@aol.co.uk or visit www.harcuk.com for more information on what we do!

HASTINGS ADVICE AND REPRESENTATION CENTRE
REG CHARITY 1083566



CASTLE LAWNS

lawn care & garden work undertaken:
MOWING, AERATING, SCARIFYING
WEED CONTROL, FERTILISER
TOP DRESSING, SEEDING, TURFING
LOGS SUPPLY

Free quotation and information

01424 812310 0781 779 5142

www.castlelawns.com

derekstone4@hotmail.com

Flat Roof Problems?



B. WALKER

FLAT ROOFING SPECIALIST

Mastic Asphalt and Felt Roofing

35 years experience

All work guaranteed

Free Estimates at Competitive Prices

01424 812245

07802 885476

Red Briars, Pett Road, Guestling, Hastings, East Sussex, TN35 4EX

Countryside Tree care

- All aspects of tree work
- stump removal
- hedge and grass cutting
- Garden Clearance and fencing
- logs available
- NPTC qualified, experienced, fully insured
- Emergency 24 hour call out



Call Luke 01424 424322 / 07981341847

Email countrysidecare@yahoo.co.uk

Recommended by local residents

Do you have a holiday house,
cottage or apartment
that you would like to let?
If so, please get in touch.



bramleyandteal.co.uk
01580 860840



*' impartial advice & support
in an increasingly gadget laden life '*

it & av solutions
neilburgess

For all the advantages that technology offers, setting up and installing a new computer, iPad, iPhone or even a TV can be a time consuming process and sometimes a bit of a headache, even for those with a bit of technical know-how.

So, if you simply don't have the time or inclination to set it all up, we can help.

additional services include -

- **virus removal & data recovery**
- **pc & mac tune-ups**
- **wi-fi & network troubleshooting**
- **multi-room audio**
- **multi-room video**
- **intelligent security solutions**

for a free, no obligation, home or business visit, please call
07970 939 300 or email **neil@itandavsolutions.com**

over 25 years experience, local references available.



Microsoft



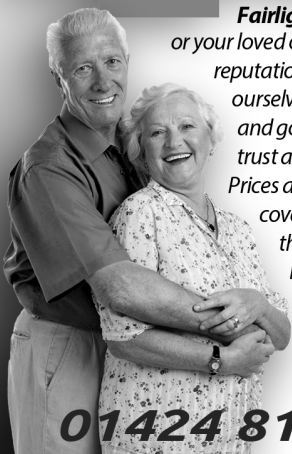
Google



SONOS

POSITIVE Homecare

***Exceptional care for you -
in your own home***



Fairlight has a new domiciliary care agency, providing care for you or your loved ones. As a local company, we already have an excellent reputation providing professional care without compromise. We pride ourselves in selecting experienced and dedicated carers with personality and good character. The purpose of our work is to provide care you can trust and rely on, that's well managed and given attention to detail. Prices are competitive, from 30 minute calls to all-day care and respite cover. Personal care, domestic help and shopping are just some of the things we can help you with.

If you feel you need a helping hand, give us a call and we can discuss your needs. There is no obligation.



Support with
Confidence
EAST SUSSEX COUNTY COUNCIL

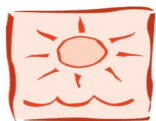
01424 813700 *We're right nearby*

*Visit our website
for more information*

www.positivehomecare.co.uk

The lookout

FIVE STAR BED & BREAKFAST



THE LOOKOUT



Chick Hill – Pett

Two self contained on-suite rooms

Award winning multi choice breakfast

Free WiFi & Internet

Multi channel TV

Mini Fridge

Ample secure off road parking

Enjoy breakfast on the Patio or Sun lounge taking in the superb sea view

WWW.lookoutbb.co.uk

Please visit our web site for all information & booking enquiries
or telephone any time

01424 812070

KR WINDOWS LTD

Installers of top quality u.p.v.c

Conservatories ~ Porches ~ Windows

Doors ~ Fascias ~ Soffits ~ Guttering

Replacement Handles ~ Replacement Hinges

Replacement Sealed units

All Work Guaranteed ~ Over 20 Years Experience

Fensa Registered Company

From a replacement handle or double glazed unit to a new conservatory or whole house of windows call **Kevin** for a free Estimate and Advise

01424 754246 ~ 07970 207914

Kevin@beamingmail.com

Local references available



AN INVITATION TO GET FIT!

EXERCISE EVERY THURSDAY MORNING IN PETT VILLAGE HALL

For all ages: just turn up in trainers and loose clothing – lycra optional!

9.15 - 10.15 BODYSCULPT

£3 per session

Intermediate class with music to improve stamina, shape, strength and suppleness in a relaxed and friendly atmosphere



10.30-11.30 BODYSTRETCH

£3 per session

Beginners' class with music to work on toning and flexibility while reducing stiffness, stress and aches and pains: informal, effective and fun

BARGAIN! Both classes for only £5

For further details call or e-mail **Mrs Robin Hutt**
01424813182 or robinhutt@btinternet.com

Private and home training also undertaken



YOLANDA WIGGINS
PHOTOGRAPHY

Tel: 01424 813922
Mob: 07922 089258

Weddings ~ Portraits ~ Equine

Take a look at my website and
Call me!

www.YolandaWiggins.co.uk



Mobile Hair Design by Nicole

Formally at the "Rye Retreat"

9 years Aveda Trained
Fully insured

Latest Cutting and Colouring Techniques

Cut and Blow dry	£20.00
Wet Cut	£15.00
Full Head of foil Highlights	£40.00
Half Head Foil highlights	£25.00
Full head Tint	by Quotation
Men's Cuts	£10.00

APPOINTMENTS 7 DAYS A WEEK - HOURS TO
SUIT YOU

Contact **Nicole** on **07803 846133**

Carpets & Soft Furnishings Expertly Cleaned

A local, quality service is
guaranteed, using the very latest
equipment and cleaning methods,
for the best
possible results

FREE emergency stain removal is
available to all **Pett** residents!

Just phone

(01424) 871444

Mike will be happy to take your call

Conquest

Cleaning Services Limited

Vernon Cottage * Pett Road * TN35 4HD

Members of the National

Carpet Cleaners Association &

ESCC Trading Standards Approved

www.conquestcleaning.co.uk

LUNSFORD FARM LAMB



Available for the freezer
half or whole lambs

Jointed & individually wrapped

Enjoy the superb flavour of the
meat from this
award winning local flock

Winner of the
Romney Sheep Breeder's Society:
"Champion Commercial Flock"
2008 & 2012

To order
01424 813368 – 07776 143509



YEW TREE STONE LTD.

Your Local Family Stonemason

New Memorials
Grave Maintenance
Renovation & Cleaning
Additional Inscriptions

Home Visits Welcomed

Tel: 07511 133272

E-Mail: enquiries@yewtreestone.com

20 Year Fixing Guarantee On All
New Memorials

Beauty by Susannah

Over ten years experience providing a professional service and high standard of beauty treatments in the comfort of your own home.

We provide a whole range of quality beauty treatments, here are just a few...

Sothys Skincare Treatments

Energising Facial
Hydradvance Facial
Collagen Hylaronique
Resurfacing Peeling Care Facial
Limited Edition Seasonal Facial
Multiaction Eye Contour

Beauty Treatments

O.P.I Gel Manicures from £27
& Gel Pedicures from £35
O.P.I Gel Nail extensions from £37
Waxing from £6
Eye Treatments from £9
Massage from £20

Please enquire for further information and full treatment price list.

SPECIAL OFFER

Energising & Coffret anti-ageing package*

Includes a 1½ hour energizing facial with Siberian Ginseng to illuminate the skin, revealing it's youthfulness and day cream with free night cream.

normally £129 now £99
when you quote reference: PETT1

This 1½ hour facial treatment will leave
you feeling relaxed and refreshed

*Subject to availability, booking and while stocks last



 **SOTHYS**
PARIS

O·P·I



**FREE TELEPHONE
CONSULTATIONS**

**GIFT VOUCHERS
ALSO AVAILABLE**

Telephone:
07956 037 887

Email:
info@beautybysusannah.co.uk

Beauty by Susannah

GAS / LPG / OIL / SOLID FUEL / ELECTRIC

Save up to 40% on your heating bills

Burst Pipes
Leaking Taps
Blockages
Toilets & Sinks
Radiators
All General Plumbing
All General Heating
Boiler Repair & Replacements

Fully Fitted Bathrooms
/ Shower Rooms
and Kitchens including
all Building & Electrical Work
Central Heating
All aspects of Gas Work
Gas Safety Checks
Landlord Certificates

For further information & Friendly advice call

K J Sands Heating Services

01424 753 587

6 Highview Close, St Leonards-on-Sea TN37 7HY



10944

A MAN THAT CAN...

I CAN TACKLE ANY ODD JOBS
AROUND THE HOME OR GARDEN
THAT YOU MAY BE UNABLE TO DO
YOURSELF. ANYTHING FROM A
SQUEAKY HINGE TO PUTTING UP
SHELVES, TO ASSEMBLING
FLAT-PACK FURNITURE
OR A GARDEN SHED.

I AM MATURE, HONEST, RELIABLE
AND HAVE BEEN CRB CHECKED
REFERENCES AVAILABLE
CALL FOR A FREE ESTIMATE
NO JOB TOO SMALL

Chris Sherwin, Pett Village

Tel: 01424 813825

Mobile: 07875 109215



PIANO / KEYBOARD LESSONS

Half hour lessons on a one-to-one basis.
Qualified teacher.
£12 per lesson.

Any age from 7 to 70+
Learn a new skill or brush up an old one.
Learn at your own pace.
Hours to suit, day or evening.
Beginners welcome!

Email: lessons@chocolatepiano.com

**Kath Barron 01424 815263 / 07740
367450**

A-STAR COMPUTING

"For all your technical needs"

- * **PC, LAPTOP & APPLE MAC** Repairs & Servicing *
- * **INTERNET**, Networking & Wireless Networking Support *
- * Data, Photo, Email Recovery *
- * Virus, Malware, Spyware and Unwanted Software removal *
- * Hardware and Software Upgrades & Installations *
- * *Help Getting Started, Home Tuition, **Computer Training*** *

Home or Business

No Fix, No Fee, No Call out Charges, Very Low Rates

Call us on **01424 201625** or **07976 483839**, All Areas

Email us with any questions: support@a-starcomputing.co.uk

WWW.A-STARCOMPUTING.CO.UK

A-Star Computing® 

Jems & Marsh *FULL GARDEN SERVICES & HOUSE PLANT CARE*

HEDGING
BORDER MAINTENANCE
DESIGN
LAWNCARE

A friendly, professional & reliable service.

We have 40 years of experience between us and we're also BTEC & NCH qualified.

Please call us to arrange a FREE consultation.

REFERENCES AVAILABLE ON REQUEST.



Contact: 07528 030379

Email: mikemarsh112@yahoo.co.uk

S&R Landscapers

We cover all aspects of gardening

**including Fencing, Clearances, Tree work, Turfing, and
much more - Fully Insured**

Call us for a free quote on **07865467592**

Or Email **harris.richard6@sky.com**

The Royal Oak

Serving Home Cooked Food Real Ales & Selected Wines

Events at The Oak:

Quiz Nights every other Wednesday

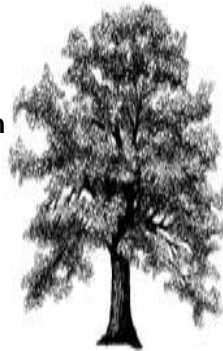
**Irish Sessions play live
Every 2nd Wednesday from 8.30pm each Month**

**Our Live Music and Quiz Nights in aid of
Help for Heroes & St Michaels Hospice -
Please check our website for details of further events**

**"Daily Deal Meal" £6.50
Add a Dessert + Coffee = £11.25
Mondays* to Thursdays**

Bar Open

**Mon - Sat 11am - 11pm
Sunday 12 Noon – 1030pm**



Food Served

**Mon - Sat
12noon - 2.30pm,
6 - 9.30pm
Sunday 12 noon - 9pm**

**excludes bank holidays*

01424 812515

royaloakpett.com

A warm welcome aboard THE SHIP: cruising all the way through Spring!



WINCHELSEA BEACH

THE SHIP

SPRING HAS SPRUNG

Come and relax in our
beautifully landscaped garden
and enjoy a spot of alfresco dining.

QUIZ NIGHT EVERY THURSDAY, 8PM

Join our Quiz Master for a
night of fun and prizes.



FISH & CHIPS WEDNESDAY

Come along to our popular
Fish & Chips Wednesday!

FISH & CHIPS £7

Includes bread and butter
and a cup tea/coffee.

☆ Lunchtime Only ☆

BURGER WEEKEND

1ST TO 4TH MAY

Enjoy our range of lovely
burgers on the May bank
holiday weekend. Book now
to avoid disappointment.

Find us on **facebook**

Sea Road
Winchelsea Beach
TN36 4LH

shipshiphooray
shipwinchelsea beach
www.shipwinchelsea beach.com

01797 226767



22 Winchelsea Road
Rye
East Sussex
TN31 7EL
01797458007

www.saul@cpmotorco.co.uk
www.cinqueportsmotorcompany.co.uk
Mobile 07824096482

Opening Hours
Mon-Saturday 9am – 6.30pm
Sunday 10am-3pm

Or simply contact us to arrange an appointment.



We can pick up or deliver your vehicle.



At CinquePorts Motor Company, you will encounter a warm and friendly welcome, where we aim to make the whole car buying process as enjoyable as possible. With vehicles in stock from Jaguar to Ford or Classic to Modern, Cinqueports aim to cater for all your needs with a friendly and professional service. All our cars come with a silver warranty with the option to upgrade. What's more, if you are looking to sell your car or part exchange we are always on the lookout for vehicles in very good condition. Feel free to have a browse around our website or why not pop in and visit us at our Showroom in Rye, and check out the superb selection of pre-owned cars for yourself at 22 Winchelsea Road, Rye.

Carl & Jane

CATS PROTECTION



We have rescued cats and kittens available for re-homing.

They are all vaccinated, micro-chipped, vet checked and, if over 5 months old, neutered.

Visit www.Hastings.cats.org.uk to see who is available or give us a call on 01424 754328 or hastingscp@talktalk.net.

For lost & found enquiries call 01424 443133.

BATHROOMS OF PETT

INSTALLATION AND TILING

MAXIMISE FLOOR SPACE WITH
A **WET ROOM**

*QUALITY WORK, FULLY
EXPERIENCED*

ALSO NOW
SMALL BUILDING WORK AND
PROPERTY MAINTENANCE

Mike Westerbeek
01424 814521 ~ 07708 066990

BUCKSWOOD SCHOOL

YOUR LOCAL INDEPENDENT SECONDARY SCHOOL



BROOMHAM HALL

Bella Godson
April '02

- Students aged 10-18 years – 200 boarders and 180 local day children
- 72% overall GCSE pass A*-C (85% UK students only) in 2011
- 97% 'A' Level pass in 2011
- Accredited International Baccalaureate
- Placements to top UK Universities including Cambridge, UCL, St Andrews, LSE, Warwick and Loughborough
- Extensive transport routes covering Hastings, Bexhill, Rye and Cranbrook
- Affordable fee. Generous bursaries and scholarships available – academic, music, art, sport, drama and equestrian – up to 50%

Buckswood . . . investing in our local community

Tel: 01424 813813

Email: achieve@buckswood.co.uk

Web: www.buckswood.co.uk



Bed and Breakfast ~ Stream House

AA 5 Star Highly Commended

3 Luxurious en-suite rooms with deep baths and power showers

Cosy guests lounge with inglenook fireplace

Delicious breakfasts served in the dining room overlooking the stream

Beautiful 3 acre garden where you can relax by the Koi pond



Please visit our website <http://www.stream-house.co.uk>

Email: info@stream-house.co.uk

Phone: **01424 814916** ~ Mob: **0794 1911378**

See us on PettNet.co.uk

COUNTRY



CARERS

Country Carers Ltd

Offices 1&2 Jempsons Trading Estate, 65-81 Winchelsea Road, Rye, East Sussex TN31 7EZ

Community Carers

We provide Personal & Domestic Care within your own home

Tel : 01797 223329 Mob : 07960 063658 (24hr)

Your
Key
Concierge

YourKeyConcierge.co.uk

**ARE YOU WORRIED
ABOUT YOUR EMPTY
HOUSE?**



**DO YOU HAVE A SECOND HOME? ARE YOU LEADING A BUSY LIFE?
RELAX** with our **SECURE KEYHOLDING SERVICE** we can provide:

- Home checks,
- Emergency cover
- Second Home Management

For further details: www.yourkeyconcierge.co.uk, E.mail info@yourkeyconcierge.co.uk,
or telephone DAVID DUNLOP on 01424 813018/07912 686429

MICHAEL PENFOLD

GENERAL BUILDING
PLASTERING
MAINTENANCE
PAINTING
*References available
Reliable and Trustworthy*

36 New Winchelsea Rd, Rye, East Sussex 01797 225906 ~ 07974 306258

Travis Electrical

Domestic electrician part P compliant covering all aspects of electrical work

Rewires
New installations
Extensions
Additional sockets or lighting points
Consumer unit upgrades
Periodic inspection
Fault finding
Free quotes

17th edition qualified Luke Travis
01424 773006 / 07821325797
travis.electrical@hotmail.com
www.traviselectrical.co.uk



Capability Chris

Garden Design & Restoration

Chris O'Donoghue
Chelsea Medal Winner
Garden Design

Beautiful hand-coloured drawings
Comprehensive planting plans
Concise care instructions
Regular aftercare and maintenance

For free consultation please contact
Chris O'Donoghue

07887 554412 – www.chrisodonoghue.co.uk



farnsy@hotmail.co.uk
07967 794749
01424 815241

P.J. Turner

ALL ASPECTS OF
TREE WORK
CONTRACTOR

MOWING – LOGGING

FENCING

FREE TELEPHONE ESTIMATES

01424 812604

Ecoheat Sussex Ltd

Your local Plumbing and Heating company.

ALL Plumbing and Heating undertaken.

Contact Andy Goodsell on
01424 813819
07809 573389
andypph@btinternet.com

4 Rectory Park
Pett
TN34 4EU



TJWoodsmen

Vermin & Pest Control Services
"Mole Catching Specialist"

Member of The Guild of British Molecatchers

Please call Tim on
01424-732818 or 07505 864063
tjwoodsmen@aol.com



Garage On The Level

Unit 13-14 Suttons Industrial Park, Sea Road, Winchelsea Beach, TN36 4LZ

Phone 07854 016746

+ Vehicle Servicing and Repairs
+ MOT Preparation and Test

+ Diagnostic Health Check
+ Full Air Conditioning Service

Why using aircon in the winter is essential?

- In the damp and cold season the A/C system quickly clears fogged-up windows because it draws humidity out of the air.
- A/C system clear the front car window very quickly in defrost function.
- Regular use will help prevent oil seals drying, refrigerant losses compressor failure and keeps up the service life by preventing expensive repairs down the road.

To guarantee long-term and perfect functioning of the air conditioning, it should be checked over regularly by the workshop.

Garage On The Level use a revolutionary purification system and offer the most extensive Air Conditioning service available.



**Call for the competitive price!
07854 016746 Terry Osborne**

**ONE OF THE
LARGEST
DISPLAYS OF
WORKING
APPLIANCES IN
THE AREA**

*TRY BEFORE YOU
BUY IN OUR
DEMONSTRATION
AREAS*

**REGULAR
COOKING EVENTS**

*CHECK OUT OUR
WEBSITE FOR
DETAILS*

**FIND US ON
FACEBOOK**

23 CRANBROOK
ROAD,
HAWKHURST,
KENT TN18 4AZ
TELEPHONE 01580
753470



**FULL KITCHEN DESIGN &
INSTALLATION SERVICE.
SALES AND SERVICE FOR MOST
MAJOR APPLIANCES.**

AEG
perfekt in form und funktion



Miele
IMMER BESSER



www.martinsofhawkhurst.co.uk



JOHN COX

Quality Building Work

*Inside and out
No job too large or too small*

**PLASTERING, ROOFING
CERAMIC & MARBLE TILING
DECKING, PATIOS, ETC.**

Call John on:

**01424 439995
07792 964210**

FOR A FREE ESTIMATE & ADVICE

**FLEAS, WASPS, BEES,
RATS, MICE,
MOLES, PIGEONS**

ROTHER PEST CONTROL

**R.S.H. CERTIFICATED
&
General Property Maintenance
Fencing – Brickwork
Roofing**

Mr. A.D. Benn

**Tel: 01797 226778
Mobile: 07739 174552**

**Funnell
& Perring
SOLICITORS**

**192-193 Queens Road Hastings
East Sussex TN34 1RG**

**EXPERIENCED ADVICE IN A FRIENDLY
CARING ATMOSPHERE**

We specialise in:

Wills and Trusts	Conveyancing
Probate	Family Matters
Child Care Work	Court Work

**Please contact us on
01424 426287/437081
for more information**

email: law@funnellperring.co.uk



The mark of excellent care

**Do you need help
at home?**

**From 30 minutes a week to
24 hours a day.**

We can help with:

- Personal Care • Shopping
- Housework • Cooking

And much more.

**Bexhill: 01424 819000
www.caremark.co.uk/rother**



The Two Sawyers

Pub, Restaurant and Accommodation

“ Good food, good service, great atmosphere ”

Free House • Fresh Local Fish • Seasonal Menu • Harveys Sussex Best Bitter
Guest Ales • British Game • Free Wi-Fi • Bed and Breakfast • Log Fires

Petts Road, Pett Village, Hastings, East Sussex, TN35 4HB
01424 812 255 • twosawyers.co.uk



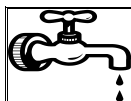
[facebook.com/
TwoSawyers](https://facebook.com/TwoSawyers)



**1066
Garden Services**

- Lawn mowing
- Hedge cutting
- Tree work
- Landscaping
- Fencing
- Garden clearance
- Over 13 years experience
- Qualified and Insured

Please contact us to arrange a quote:
Office: **01424 212650**
Mobile: **07 43210 6220**
Web: www.1066grasscutting.co.uk



NEED A PLUMBER?

Ray Barden

Plumbing & Heating
01424 812551

**ALL ASPECTS OF PLUMBING &
HEATING UNDERTAKEN**

**40 YEARS EXPERIENCE IN
PETT AND SURROUNDING
VILLAGES**

No job too large
or too small



THE BUTCHERS SHOP

PETT ROAD, PETT

(01424) 812148

Personal Friendly Service

Quality Scottish Beef

Prime Pork

English Lamb

Home Cooked Ham

Seasonal Meats

Barbeque Ideas

Delicatessen

Traditional Home made

Sausages & Burgers

Fresh Bread & Milk

Newspapers from Monday to

Saturday

Also in stock are

Frozen goods, ice creams & comestibles



If you are 60 plus

Do come and join us each Friday between
10am and 2pm at the Village hall in Fairlight
for a social gathering amongst friends.
Enjoy a delicious hot lunch, Quizzes, raffle,
a game of Bingo and various entertainment.

All for just £5.00

Transport available at a minimal cost.



For more information please visit
our website: www.fairlightmopp.co.uk
or call: **Jim Saphin** on 07905 981036

(A registered Charity)

344 HASTNGS – RYE		Mondays – Fridays (excluding Bank Holidays)												
		S (S/H school/holiday days only)												
Hastings Rail Station		0745	0845	0945	1045	1145	1245	1345	1445	1550	1650	1755		1900
Hastings Breeds Place		0748	0848	0948	1048	1148	1248	1348	1448	1553	1653	1758		1903
Ore Co-Op	0718	0800	0900	1000	1100	1200	1300	1400	1500	1605	1705	1810		1910
Fairlight Glen	0721	0803	0903	1003	1103	1203	1303	1403	1503	1608	1708	1813		1913
Fairlight Cove Hotel	0727	0809	0909	1009	1109	1209	1309	1409	1509	1614	1714	1819		1919
Pett Level	0733	0815	0915	1015	1115	1215	1315	1415	1515	1620	1720	1825		1925
Winchelsea, Smugglers	0737	0819	0919	1019	1119	1219	1319	1419	1519	1624	1724	1829		1929
Winchelsea Beach	0739	0821	0921	1021	1121	1221	1321	1421	1521	1626	1726	1831		1931
Winchelsea, Bridge End	0742	0824	0924	1024	1124	1224	1324	1424	1524	1629	1729	1834		1934
Rye Rail Station	0748	0830	0930	1030	1130	1230	1330	1430	1530	1635	1735	1840		1940

Sundays & Bank Holidays; 4 departures from Hastings Rail Station every other hour from 1105 to 1725

344 RYE – HASTINGS		Mondays – Fridays (excluding Bank Holidays)													
		<i>S H (S/H school/holiday days only)</i>													
Rye Rail Station		0703 0753 0813 0843 0928 1028 1128 1228 1328 1428 1533 1633 1733 1825													
Winchelsea, Bridge End	0709 0759 0819 0849 0934 1034 1134 1234 1334 1434 1539 1639 1739 1831														
Winchelsea Beach	0712 0802 0822 0852 0937 1037 1137 1237 1337 1437 1542 1642 1742 1833														
Winchelsea, Smugglers	0714 0804 0824 0854 0939 1039 1139 1239 1339 1439 1544 1644 1744 1835														
Pett Level	0718 0808 0828 0858 0943 1043 1143 1243 1343 1443 1548 1648 1748 1839														
Fairlight Cove Hotel	0724 0814 0834 0904 0949 1049 1149 1249 1349 1449 1554 1654 1754 1844														
Fairlight Glen	0730 0820 0840 0910 0955 1055 1155 1255 1355 1455 1600 1700 1800 1850														
Ore Co-Op	0733 0838 0843 0913 0958 1058 1158 1258 1358 1458 1603 1703 1803 1853														
Hastings Harold Place	0741 0850 0851 0923 1007 1107 1207 1307 1407 1507 1612 1712 1812 1900														
Hastings Rail Station	0743 0852 0853 0925 1009 1109 1209 1309 1409 1509 1614 1714 1814 1902														

Sundays & Bank Holidays; 4 departures from Rye Rail Station every other hour from 1018 to 1638

347 Pett - Hastings												
Monday to Friday (except Public Holidays)										Saturday		
Days of Operation				SH		SD						
Hastings Town Centre, Railway Station	09:10	11:10	13:10	15:10	15:10	17:35	13:10 17:35					
Hastings Town Centre, Priory Meadow	09:15	11:15	13:15	15:15	15:15	17:40	13:15 17:40					
West Hill, Whitefriars Road, adj	09:20	11:20	13:20									
Blacklands, Mount Pleasant Road, N-bound				15:20					15:20	17:45	13:20 17:45	
Ore, Graystone Lane, adj	09:25	11:25	13:25	15:25					15:25	17:50	13:25 17:50	
Ore, King's Head, o/s	09:27	11:27	13:27	15:27					15:27	17:52	13:27 17:52	
Guestling Green, White Hart, adj	09:31	11:31	13:31	15:31					15:31	17:56	13:31 17:56	
Guestling Bradshaw School, o/s	15:34											
Pett, Elms Lane, opp	09:36	11:36	13:36	15:36					15:42	18:01	13:36 18:01	
Pett, Pett Road, NW-bound	09:39	11:39	13:39	15:39					15:45	18:04	13:39 18:04	
Days of Operation				SD	SH		SH		SD			
Pett, Pett Road, NW-bound	08:19	08:26	09:42	11:42	13:42	15:42	15:47	08:26	13:42			
Pett, Elms Lane, opp	08:22	08:29	09:45	11:45	13:45	15:45	15:50	08:29	13:45			
Guestling Bradshaw School, o/s	08:29											
Guestling Green, White Hart, opp	08:34	08:34	09:50	11:50	13:50	15:50	15:55	08:34	13:50			
Ore, King's Head, opp	08:38	08:38	09:54	11:54	13:54	15:54	15:59	08:38	13:54			
Ore, Post Office, opp	08:40	08:40	09:56	11:56	13:56	15:56	08:40 13:56					
Fairlight, Coastguard Lane, opp								16:03				
Fairlight Cove, Fairlight Cove Hotel, S-bound								16:09				
Pett Level, Canal Bank, adj								16:15				
Blacklands, Mount Pleasant Road, S-bound	08:45	08:45							08:45	14:01		
West Hill, Whitefriars Road, opp				10:01	12:01	14:01	16:01					
Hastings Town Centre, Harold Place, Stop P	08:49	08:49	10:06	12:06	14:06	16:06	08:49 14:06					
Hastings Town Centre, Railway Station	08:51	08:51	10:08	12:08	14:08	16:08	08:51 14:08					

PETT PARISH COUNCIL 2015 – 2016

Christine Sylvia DEACON	Ashleigh, Pannel Lane, Pett, East Sussex, TN35 4JB
Judith Mary DEAN	Delvings, Chick Hill, Pett Level, Hastings, East Sussex, TN35 4EQ
Andrew Riddell DUNLOP	1, Lunsford Farm Cottages, Pett, East Sussex, TN35 4JG
David William PENFOLD	Jasmine Cottage, Elm Lane, Pett, Hastings, East Sussex, TN35 4JD
Giles William Roger PERRIN	Eves, Pett Rd, Pett, East Sussex, TN35 4HG
Rodney James ROLFE	2 Brambletye, Pett Road, Pett, East Sussex, TN35 4HE
Mike WILKINS	Adeleine, Pett Road, Pett, East Sussex, TN35 4HB

Clerk

Sarah Willoughby

Wildflowers, Pett Road, Pett,
TN35 4EY

01424 813785

clerkpettparishcouncil@hotmail.co.uk

Councillor Responsibilities – To Be Advised

ROTHER DISTRICT COUNCIL (MARSHAM WARD)

Subject to elections on May 7th

EAST SUSSEX COUNTY COUNCIL

Carl Maynard

The Burrow, 23 Baldslow Down,
Westfield TN37 7NJ

01273 481576

cllr.carl.maynard@eastsussex.gov.uk

MEMBER OF PARLIAMENT FOR HASTINGS & RYE

Subject to elections on May 7th

POLICE & CRIME COMMISSIONER FOR SUSSEX

Katy Bourne

Sackville House, Brooks Close
Lewes, East Sussex, BN7 2F

01273 481561

spcc@sussex-pcc.gov.uk

CONTACT DETAILS FOR VARIOUS VILLAGE ACTIVITIES

Societies, associations & other activities			
Allotments	Paul Stapley	814202	pandpstapley@yahoo.co.uk
Badminton Club	Dave Clarke	812898	gypsydave@uwclub.net
Bowls Club	Barry Quaife	729693	barry.quaife252@btinternet.com
British Legion	Brian Green	812450	toffee35@gotadsl.co.uk
Cricket Club	Andrew Dunlop	813368	
Dance & Exercise Class	Robin Hutt	813182	robinhutt@btinternet.com
Flicks Film Society	Chris Saint	813047	chris@saintfamily.net
Flower Show Chair	Philippa Strickland	814384	pstrickl@icloud.com
Flowerpots Toddler Group	Kate Woodbridge		pettflowerpots@hotmail.co.uk
Friends of Pett Level	Rosemary Moon	812246	jrmoon@pett.eclipse.co.uk
Preservation Trust			
Gardening Club	Bob Harris	815151	bob.june@btopenworld.com
Latin American & Ballroom			
Dancing	Mr & Mrs Hall	813355	
Naturalist Society	John Taylor	814674	jnct@talktalk.net
Pilates	Annie Cuthbert	01797 225186	tb.cuthbert@btinternet.com
Pett Older Peoples Project	Sheila Thomas	01797 225616	sheilaspan@btinternet.com
Pole Dancing	Jane Baldwin	0740 325 6148	jane@mrzen.co.uk
Pett Village Hall			
Management Committee	Ray Barden	814717	ray.barden@btopenworld.com
Short Mat Bowls	Barry Quaife	729693	barry.quaife252@btinternet.com
Stir Crazy Stitchers Club	Wendy Burgess	868195	
Stoolball	Janet Fuller	01303 873227	
Tennis Club	Stuart Ware	813332	studio2@bwparchitects.com
Vibele	Natasha Saltzer	07990 697964	ncsaltzer@yahoo.com
Zumba	Sharon Clark	07972 120517	mooprincess@live.co.uk
Women's Institute	Mary Saint	813047	mary@saintfamily.net

Church Team	www.fairlightandpett.com		
Rector	Richard Barron	812799	rector@fairlightandpett.com
Retired Clergy	Rev Kay Burnett		
	Rev Frank Rowson		
	Rev David Wotton		
Readers	Meriel Deasy		
	Ken Holmes		

POLICE COMMUNITY SUPPORT OFFICERS	
Sharon.Eldridge@sussex.pnn.police.uk	Mobile 07810636992
daniel.bevan@sussex.pnn.police.uk	Mobile 07796195639
andrew.smith@sussex.pnn.police.uk	Mobile 07990704108
<i>(if you leave a message you will be contacted on their return)</i>	
Please note that if you witness a crime in progress, you should immediately ring 999	

If you want to be included in this section then please let us know together with contact name, telephone number and email address

pettparishnews@live.co.uk

SOME VERY USEFUL NUMBERS

Emergency Numbers:

Police, Fire, Ambulance & Coastguard	999
National Gas Emergency Service (gas leaks)	0800 111 999 (24hrs)
UK Power Networks (overhead power lines or loss of electricity)	
from a landline	0800 316 3105 (24hrs)
from a mobile	0333 32 32105 (24hrs)
Southern Water emergency service (leaks, blockages & pollution)	0845 278 0845 (24hrs)

Emergency Services & Utilities (non-emergency numbers):

<i>Police</i>	101
<i>East Sussex Fire & Rescue Service:</i>	
Community fire safety advice	0800 177 7069
Community safety (24 hour hotline)	0800 731 9119
<i>South East Coast Ambulance Service</i>	0300 1230999
<i>Southern Water:</i>	
To report a leak	0800 820 999

Hospitals & Local Surgeries

<i>NHS Direct</i>	0845 4647 (or 111)
<i>Conquest Hospital</i>	01424 755255
<i>Eastbourne Hospital</i>	01323 417400
<i>Harold Road Surgery:</i>	
Enquiries	01424 720878
Surgery appointments	01424 437962
Village hall appointments	01424 728872
<i>Guestling Surgery, Chapel Lane</i>	01424 814332
<i>Roebuck Surgery, Old Town Hastings</i>	01424 420378
<i>Shankill Surgery, Fairlight Road</i>	01424 728388

Council Services

<i>Rother District Council:</i>	
Customer Services Contact Centre (for all services)	01424 787000
Out-of-hours emergency number	01424 787868
<i>East Sussex County Council</i>	
Switchboard	0345 6080190

Support Services & Charities

Samaritans	08457 909090 (24 hrs)
Victim Support	0845 3030 900
Citizens Advice 1066	01424 721420
Rother District Citizens Advice	0800 169 6565
Age UK	01424 215055/734549
Hastings Lifeline	01424 781234
St Michaels Hospice 25 Upper Maze Hill, St Leonards	01424 445177
RSPCA emergency animal welfare	0300 1234 999 (24hr)
Cats Protection	01424 754328

PETT VILLAGE HALL is available for private hire. For details please call 07840 921748 or email bookings@pettvillagehall.org.uk

