



March 2015

PETT &
PETT LEVEL
PARISH NEWS

DIRECTORY OF ADVERTISERS

AV & IT SERVICES

A-Star Computing 28
Neil Burgess - IT & AV Solutions 29

BATHROOMS & KITCHENS

Bathrooms of Pett 35
Martins of Hawkthrust 36

CHARITIES

Cats Protection 35
HARC 16
Marsham Older People's Project 25

EDUCATION & TUITION

Buckswood School 30
Piano & Keyboard Lessons 8

FOOD, DRINK & ACCOMODATION

Bramley & Teal 45
Holiday Cottage 28
New Beach Club 48
Stream House B & B 40
The Lookout B & B 18
The Royal Oak 12
The Ship 47
The Two Sawyers 52

GARDEN SERVICES

1066 garden Services 25
Capability Chris Garden Design 44
Castle Lawns 16
Countryside Tree Care 45
Garden Gems 48
Jems & Marsh 28
P J Turner 44
TJ Woodsman 13

HEALTH & WELLBEING

Beauty by Susannah 41
Caremark 24
Country Carers 40
Dance & Exercise 19
Mobile Hair 20
Positive Homecare 29
Tic Toc 4

HOUSEHOLD SERVICES

Conquest Cleaning 20
Your Key Concierge 40

LEGAL SERVICES

Funnell & Perring 24

MOTORING & VEHICLE SERVICES

Cinque Ports Motor Company 35
Garage on the Level 13

PHOTOGRAPHY

Yolanda Wiggins Photography 19

PLUMBING & ELECTRICAL

A A Farnes 44
Ecoheat Sussex Ltd 13
KJ Sands Heating Services 8
Ray Barden - Need a Plumber 25
Travis Electrical 44

PRODUCE SUPPLIERS

Lunsford Farm 20
The Butcher's Shop – Pett 25

PROPERTY M/NANCE & BUILDING

B Walker - Flat Roof Problems 16
Chris Sherwin – 'A Man That Can' 8
GEM Property Maintenance 46
Hastings Scaffolding 46
John Cox - Building Work 24
KR Windows 18
Michael Penfold 18

Rother Pest Control 24

STONEMASONS

Yew Tree Stone 20

FOR DETAILS ABOUT HOW TO
ADVERTISE IN PETT PARISH NEWS
PLEASE CONTACT US AT
pettparishnews@live.co.uk

POSTAL SERVICE

If you would like to receive a monthly copy of Pett Parish News and you do not live in the area, then we offer a Postal Service for just £12 per year.

Contact **Brenda Kirkham** on **01424 815022** or email beekirkham@tiscali.co.uk.

PETT VILLAGE VOICE in the Rye & Battle Observer

If you have any articles for inclusion in the weekly Village Voice, please contact **Mary Saint** on **01424 813047** or email mary@saintfamily.net. Deadline for copy is mid-day every Monday.



CONTENTS

A Prayer for Pett	33
Bus Timetables	49
Church & Chapel Services	34
Church News	33
Coffee Morning	14
Councillors and other reps	50
Do You Know?	14
Flicks	39
From the Rector	32
Gardening Club	10
Letters	5
Nature Notes	37
On the Beach at Pett Level	22
Parish Diary	26
POPP	38
PLPT	17
Pett Nats	14
PVH Notice board	42
Pett Women's Institute	38
Sussex Wildlife Trust	31
Tide Table	23
Village Contacts	51

Dear Readers,



As we approach March and eagerly await the arrival of spring, welcome to this edition of Pett Parish News. Once again, it is that time of year to think about planting in gardens and allotments, perhaps, in preparation for the Village Flower Show in July. Inspiration for this can be found on page 10, where suggestions of 'Twenty five plants to grow before you die' are shared by the Garden Club.

There are a few changes I would encourage you to note, particularly with the departure of Tony from the Post Office. Firstly, Phil at the Butchers is now selling papers from Monday to Saturday (page 25). Secondly, the transfer of postal services to the Methodist Chapel is

underway, with details of how to comment on the consultation to be found on page 7. Finally, a new business has opened in the premises previously occupied by the Post Office, and I am sure you will join me in welcoming Allison Winter, owner of "Tic Toc" to the village, and wish her every success.

The Village Hall is increasingly being used for many activities. Details of events each month will be posted on the magazine's 'PVH noticeboard' (page 42-43), to ensure you do not miss out! Please support this valuable asset.

I hope you enjoy this edition, and look forward to receiving your news on events within our community.

Best wishes
Sarah

Deadline for copy (letters, articles, adverts, etc.) is mid-day the 15th of each month. Anything that you can get to us beforehand (especially if it is handwritten) is greatly appreciated. Copy can be sent to us by email to pettparishnews@live.co.uk or delivered to me, Mike Wilkins, at Adeleine (813206) or Sarah Adams at Seawinds (812323). **Copy must be accompanied by your name, address and phone number otherwise it may not be published.**

Every effort has been made to ensure the accuracy of the information supplied herein. However, the editor cannot be held responsible for any errors or omissions (E&OE). Unless otherwise indicated, opinions expressed herein are those of the authors of the individual articles and adverts, and they do not necessarily represent the views of the editor. The editor cannot uphold or recommend any advertiser here within this publication.



Tic Toc

Hair Couture

NOW OPEN!

**3 THE LYNDENS
PETT ROAD
PETT
TN35 4HD**

OPENING HOURS

MONDAY	9-5
TUESDAY	9-5
WEDNESDAY	9-5
THURSDAY	9-6
FRIDAY	9-5
SATURDAY	9-2

LATE NIGHT AND EARLY APPOINTMENTS
ARE AVAILABLE.

CALL US ON 01424 814 554

APPOINTMENTS ARE NOT ALWAYS NECESSARY.

FREE CONSULTATIONS AVAILABLE.

PLEASE NOTE THAT A SKIN-TEST IS REQUIRED 48 HOURS PRIOR TO ANY COLOUR SERVICES.

Letters to the Editor



To all the lovely residents in Pett.

First of all I would like introduce myself as the new owner of the post office premises

I know I have huge shoes to fill with Tony being such a well loved part of the community and one of the loveliest people I have had the pleasure of meeting, I will do my very best to ensure I do all I can to fill them!

I would also like to say a huge thank you to all the neighbours surrounding the premises for being so patient and lovely whilst the transformation of the shop was underway and I can only apologise for any inconvenience in regards to parking and noise.

Now to introduce my shop!

Tic Toc is a dream come true for me, especially being in Pett. With family connections in the village or the last 10 years and having worked in surrounding areas and local myself, I feel extremely privileged to have this opportunity to bring 3 wonderful services together and offer as much support and involvement in the village as I possibly can.

The hair salon is now open and running with appointments not always necessary, but bookings in advanced can be taken to avoid disappointment! I have a wonderful and experienced team who will also be on hand to offer any advice or help if needed and all clients old and new are always welcome. I will always aim to provide the best possible service we can in a very friendly, very happy and professional atmosphere.

Tic Toc will also be opening a tea-room VERY SOON and I will be sure to keep you all updated on our progress! We all love cake (especially at Tic Toc) so what a better place to share another passion! As many of you have also seen we have started a very small section of our gift shop, which will be extended in due time throughout the tea-room and will forever be seasonal, with beautiful gifts, cards, homeware and furniture it will never be the same throughout the year!

I would also love to have a selection of local produce consisting of preserves, chutneys, honey and eggs and anything else wonderful anyone can suggest.

Thank you for reading and for the lovely support I have already had and I hope to meet you all very soon.

Alli x

Dear Editor,

It was good to read the letter from Marion and Bob Griffin in the January edition, and to know that they had been so well-served by the people they had employed through adverts in the Parish News. Just a word of warning though:- not everyone who advertises is of the same high standard, which is why you very sensibly print a disclaimer on the leader page.

The safest bet for anyone new to the area is to ask prospective tradesmen to put you in contact with local people for whom they have worked. In a couple of recent instances this would have saved householders not only a poor standard of work but also a ludicrously high bill for it.

Time spent on research is seldom wasted!

Avril Thurley, Rectory Cottage, Pett

Hi there,

Please accept my apologies for troubling you but I've been on the wine again and signed up for the Hastings Half Marathon 2015 - on Sunday March 22.

If you are willing and able to help, I am ambling round the town to raise money for **ST MICHAELS HOSPICE**, there is a link further down the page for donations by card, or if you prefer you can of course pop into The Queens Head or The Royal Oak and pop your change (in coins or notes!) into the collection boxes on the bar.



Thanks very much once again for your support

Cheers, Ian

<http://www.justgiving.com/IAN-MITCHELL24>

Dear Editor,

For information, we are hoping the Post Office will be up and running soon, pending IT connection, with opening days being Monday and Thursday from 12.00 to 3.00 pm. Look out for the Opening Event.....!!

Sue Larsson, Pett Methodist Chapel

Local public consultation

Proposed branch re-opening

POST
OFFICE®

What we're doing

In order to restore Post Office services to our customers in Pett, we are proposing to introduce a Hosted Outreach service.

What this would mean:

- We are pleased to inform that a nearby Postmaster (from Lydd Post Office) has been identified, who will offer the service from Pett Methodist Church, in Pett.

What happens next

We're carrying out a local public consultation on the new location and we'd like you to let us have your views.

There's a leaflet available with more information, or if you have any questions or comments, please get in touch.

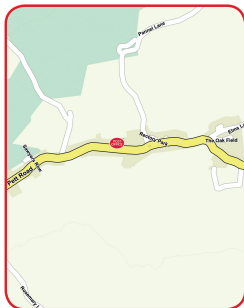
Items sent by FREEPOST take 2 working days to arrive. Therefore, responses by FREEPOST should be sent in sufficient time to arrive before the end of the consultation period. Working days do not include Saturdays or Sundays. Responses received after the deadline will not be considered.

Dates for the local public consultation on the proposed new location:

starts: 13/02/2015

ends: 27/03/2015

New location: Pett Post Office® branch, Pett Methodist Church, Pett, Hastings, TN35 4HE.



• Services

The same range of services will continue to be available, with the exclusion of Euro On Demand Bureau De Change facilities.

• Access and facilities

The premises will have level access with a threshold strip and a wide door entrance. Internally, there will be a hearing loop and space for a wheelchair.

• Transport / parking

Roadside parking outside the premises.

• Route

These premises are located approximately 100 metres away from the previous service, along hilly terrain.

Post Office opening times

Monday	12:00 – 15:00
Thursday	12:00 – 15:00

For information in Braille, large print or audio, to see a copy of our Code of Practice about changes to the Post Office® network, or for further information on Post Office products and services, please contact our Customer Helpline or visit our website, as detailed above.

How to contact us:



postofficeviews.co.uk



comments@postoffice.co.uk



FREEPOST Your Comments



Call 08457 22 33 44
Textphone 08457 22 33 55

Want to tell us what you think right here and now – scan here

If you don't have a QR code scanner on your phone, you can find one in your app store.



POST
OFFICE®

GAS / LPG / OIL / SOLID FUEL / ELECTRIC

Save up to 40% on your heating bills

Burst Pipes
Leaking Taps
Blockages
Toilets & Sinks
Radiators
All General Plumbing
All General Heating
Boiler Repair & Replacements

Fully Fitted Bathrooms
/ Shower Rooms
and Kitchens including
all Building & Electrical Work
Central Heating
All aspects of Gas Work
Gas Safety Checks
Landlord Certificates

For further information & Friendly advice call

K J Sands Heating Services

01424 753 587

6 Highview Close, St Leonards-on-Sea TN37 7HY



10944



A MAN THAT CAN...

I CAN TACKLE ANY ODD JOBS
AROUND THE HOME OR GARDEN
THAT YOU MAY BE UNABLE TO DO
YOURSELF. ANYTHING FROM A
SQUEAKY HINGE TO PUTTING UP
SHELVES, TO ASSEMBLING
FLAT-PACK FURNITURE
OR A GARDEN SHED.

I AM MATURE, HONEST, RELIABLE
AND HAVE BEEN CRB CHECKED
REFERENCES AVAILABLE
CALL FOR A FREE ESTIMATE
NO JOB TOO SMALL

Chris Sherwin, Pett Village

Tel: 01424 813825

Mobile: 07875 109215



PIANO / KEYBOARD LESSONS

Half hour lessons on a one-to-one basis.
Qualified teacher.
£12 per lesson.

Any age from 7 to 70+
Learn a new skill or brush up an old one.
Learn at your own pace.
Hours to suit, day or evening.
Beginners welcome!

Email: lessons@chocolatepiano.com

**Kath Barron 01424 815263 / 07740
367450**

The Ceramic Poppies at the Tower of London - Angela Hawksley, Churchwarden

One of the remembrance poppies from the Tower of London has been given to Pett Church and we are planning to display it close to the list of names of those who died in both World Wars. It will be on permanent display and will be blessed at a service later this year (I will let you know the date later).



Our generous donor is Anthony Turner (known as Tony) who, with his sister Muriel (who became Muriel Lovejoy) and his brothers Christopher and Alan, as children, sang in the Pett Church choir during the Second World War. They lived at Spring Field, Watermill Lane. Tony remembers that the Royal Artillery who were based in Watermill Lane filled the church each Sunday.

Tony has given the poppy partly in memory of his uncle Henry Charles Beeching who served in the Second Battalion, Royal Sussex Regiment and who died one hundred years ago on 26th August 1915 aged 26. He is buried at the British Cemetery at Vermelles, which is 10KM northwest of Lens. Henry's father Luke was a thatcher and lived with his wife Ellen and large family at Rose Cottage just past Watermill Lane on the left. Tony attended Pett School and he remembers a lot of children with the same surnames as those recorded on the war memorial.

Tony told me some of his memories of Pett long ago. He remembers the spire of Pett Church being hit by lightning and the cockerel falling to the ground. He also remembers seeing what he and his friends thought was an aeroplane crashing in the woods off Pannell Lane. They ran to have a look but a policeman stopped them and told them it was a doodlebug.

When he left school, Tony was called up for National Service in the Royal Engineers along with his schoolfriends Alan Jury and Vic Goodsell and they served in Korea. He still works on a farm in Surrey where he has been for more than 50 years.

Tony has given the poppy partly in memory of his uncle but also in memory of all the others. especially from these villages, who died in both wars. As we look at our poppy we cannot remember each of the 888,246 British and Empire soldiers who died in the Great War and was each commemorated by a poppy at the Tower of London but we can remember the sacrifice they made and we can remember the names we record in our Church and on our war memorial.

So, Tony, very many thanks to you!

Garden Club – Sandy Andrews



The February Garden Club talk was on 'Twenty-five Plants to Grow Before You Die'.

Lewis Normand, an experienced plantsman, passionate about his subject and with an eye for subtle detail, explained that this number was arbitrary, and that he would have no trouble in choosing a different twenty-five on another day. He said that plants and planting should 'sparkle with aptness', that they did not necessarily have to be unusual, that their special thing might be a flower, a leafy texture, a colour, or simply the way they thrust out of the ground early in the season. That it might be something that lasts for months or that gives us a moment of brilliance. From ground cover to dangerously spiky shrubs there was a plant for everyone, and importantly, they would all bring distinction to our gardens. His advice was for us to be open-minded when choosing.

Here is the list. So get planting.

Sophora microphylla 'Sun King' has yellow pea flowers in February to March. A hardy evergreen shrub that likes a warm wall and good drainage.

Parahebe perfolatia is an evergreen ground cover plant with long racemes of violet flowers. Likes a sunny border or to be at the foot of a wall.

Cercidiphyllum japonicum is a large shrub or multi-stemmed tree with bronzy-reddy stems. In Autumn the heart-shaped leaves turn to an amazing red. Smells of burnt sugar.

Rudbeckia 'Henry Eilers' has distinct, yellow tube-like petals, which are tinged with apricot on opening and fading.

Colletia paradoxa, is a genuinely dangerous, thorny but interesting shrub. Sweetly scented flowers in March and April. Drainage is critical.

Hebe 'Midsummer Beauty' is an evergreen shrub, with big strappy leaves and long mauve, fragrant flowers. Grows in sun or shade. 'Fragrant Jewel' is similar.

Hacquetia epipactus is a petite perennial. Tight clusters of yellow flowers on green bracts from February to March. It will grow under yew.

Eucalyptus Nicholli is best pruned to grow as a shrub. It has elongated, evergreen leaves. Hardy in a sheltered spot.

Galanthus plicatus is one of the very best snowdrops with a pleated leaf and a larger flower.

Hydrangea paniculata 'Polar Bear' has huge flowers opening to limey-green but becoming pure white.

Daphne bholua 'Limpsfield' has a fabulous scent but tricky requirements. Also *D. gemmata*.

Persicaria amplexicaulis 'Orange Fields' is one metre tall, easy to grow, with distinct salmon-pink flowers and bright-green foliage.

Acanthus mollis 'Rue Leden' is an easy, very refined, pure white variety.

Anisodonten 'El Rayo' is a large but semi-hardy shrub with a long flowering season. Likes sunny shelter.

Agapanthus 'White Heaven' has flat-topped flowers with jet-black stems. Stunning!

Fuchsia 'Silver Lining', on the cusp of hardiness, is worth trying for its silver foliage and delicate flowers.

Crocsmia paniculatum is an imposing five foot montbretia with huge leaves.

Epimedium 'Sphinx Twinkler' has large, spider flowers and likes dry shade.

Pseudowintera 'Majorie Congreve' is alive with colour: olive, yellow, russet, pink. Likes acid conditions and warmth.

Helleborous foetidus 'Yellow Wilgenbroek' is a big, robust and unusual yellow form.

Abelia x grandiflora, a multi-stemmed shrub, is not for a pot. If happy it will flower, with a slight fragrance, for nine months.

Sterbergia Lutea is a hardy bulb for the base of a hedge. Yellow flowers, winter into spring.

Miscanthus sinensis 'Nippon' has reddy-pink, feathery flowers in autumn.

Rosa rubrifolia (syn. *R. glauca*) has arching purplish stems with blue-green leaves and cerise flowers. Likes sun.

Next meeting on March 10th at 7.30pm, PVH

The speaker will be Nigel Phillips, talking about tips on Water in the Garden.

The Royal Oak

Serving Home Cooked Food Real Ales & Selected Wines

Events at The Oak:

Quiz Nights every other Wednesday

**Irish Sessions play live
Every 2nd Wednesday from 8.30pm each Month**

**Our Live Music and Quiz Nights in aid of
Help for Heroes & St Michaels Hospice -
Please check our website for details of further events**

**"Daily Deal Meal" £6.50
Add a Dessert + Coffee = £11.25
Mondays* to Thursdays**

Bar Open

**Mon - Sat 11am - 11pm
Sunday 12 Noon – 1030pm**



Food Served

**Mon - Sat
12noon - 2.30pm,
6 - 9.30pm
Sunday 12 noon - 9pm**

**excludes bank holidays*

01424 812515

royaloakpett.com

Ecoheat Sussex Ltd

Your local Plumbing and Heating company.

ALL Plumbing and Heating undertaken.

Contact Andy Goodsell on
01424 813819
07809 573389
andypph@btinternet.com

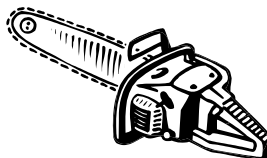
4 Rectory Park
Pett
TN34 4EU



TJ Woodsman

Tree Services, Fencing & Garden Maintenance

I am **NPTC Qualified & Fully Insured**



For a Fast & Friendly Service

Please call Tim on
01424 732818 or 07505864063

Garage On The Level

Unit 13-14 Suttons Industrial Park, Sea Road, Winchelsea Beach, TN36 4LZ

Phone 07854 016746

+ Vehicle Servicing and Repairs
+ MOT Preparation and Test

+ Diagnostic Health Check
+ Full Air Conditioning Service

Why using aircon in the winter is essential?

- In the damp and cold season the A/C system quickly clears fogged-up windows because it draws humidity out of the air.
- A/C system clear the front car window very quickly in defrost function.
- Regular use will help prevent oil seals drying, refrigerant losses compressor failure and keeps up the service life by preventing expensive repairs down the road.

To guarantee long-term and perfect functioning of the air conditioning, it should be checked over regularly by the workshop.

Garage On The Level use a revolutionary purification system and offer the most extensive Air Conditioning service available.



Call for the competitive price!
07854 016746 Terry Osborne

DO YOU KNOW? – John Taylor

Do you know that a retired naval lieutenant was one of the early people to come to Pett to live out his life in this village? In other words, one of the first 'outlanders'.

Choyce Moyses owed his strange name to his mother Sarah, whose maiden name had been Choyce. He was baptised at Southwark in March 1787 and joined the Royal Navy when he was a boy. At the age of 16 he was a midshipman on the sixty-four gun 'Utrecht' which had a compliment of four hundred and ninety men.

Soon after this he served on the frigate 'Pomone' off the coast of Spain. It was while taking passage back to Pomone from Portsmouth on the 'Blanche' he was shipwrecked in a violent storm off the island of Ushant. Forty five men were drowned but Choyce Moyses was rescued and taken prisoner by the French. He spent most of his imprisonment in the fortress of Verdun and was eventually released after the Battle of Waterloo in 1815.

We know nothing of his life after the war until 1828, when he was described as a 'Keeper of a Receptacle for Lunatics at Tooting Graveney' *[the mind boggles, doesn't it?]*. His history from that date is very sketchy and we have only a few facts. Choyce must have been rather a rogue as the next news of him shows.

Moyes was brought before the justices at Wandsworth accused of being the father of an illegitimate child. The three month old baby, William, was a charge on the parish and Moyes was ordered to pay four shillings and sixpence (22 ½ p) weekly towards the child's maintenance.

By 1837 Moyses was living in Bloomsbury, but by the time he married in 1845 his address was in Westminster. His wife, Elizabeth was a widow with two daughters and was fourteen years younger than her second husband.

Soon after their marriage Choyce and Elizabeth Moyses came to Sussex and moved into Pett Lodge. Sadly their time together was short as Moyses died on the 15th October 1853, aged sixty six. Elizabeth spent the next 30 years as a widow in Pett, living with her servant Cecilia Bartholomew (of Battle). She was quite well provided as Choyce had left her £768 and a pension of £50 a year as a lieutenant's widow. Cecilia too was left interest on £200 for life, provided she was still employed by Mrs Moyses at the time of her death. The two ladies did much to help the sick and the poor in the village. One of Elizabeth's daughters, Louisa Christie died at Eastbourne in 1886 and is buried in Pett churchyard with the Moyses. Elizabeth died at the age of eighty-three in 1885.

Though Choyce was a bit of a scoundrel in the years after the war with the French, both he and his wife were much admired and respected in Pett. They were an early example of folk coming to live in the village at a time when most of the local residents were either farmers or agricultural labourers.

On the south wall of St. Mary & St. Peter church there is a white marble tablet affixed to the wall in memory of the Choyces'. Underneath it are the words 'Universally respected'. You can't ask much more than that, can you?



HMS Pomone



HMS Blanche

Pett Level Naturalists Society – Brenda Kirkham

Our first meeting of 2015 will be our AGM on the 17th March, followed by an update on Mallydams Wildlife Hospital by Richard Tompson.

This should prove to be a very interesting talk as Mallydams is just on our doorstep and they have been caring for seals injured on our local Pett Level Beach amongst other animals and birds.

Please do come along and support us.

Visitors are always very welcome as well as new members.



Pett Village Hall Monthly Coffee Morning

- Sally Williams

How lovely it was to see you all this month after our short break away.

We had a lovely selection of cakes and raised **£38.80** - well done to everyone who supported us.

Next date for your Diary is

Wednesday 4th March 10.00am till 12.00 we are always on the **first Wednesday** of every month so pop that in your diary so you don't forget us!

Look forward to seeing you.

Sally and Helen.

**HAVING A CLEAR OUT?
HARC Charity Shops**

collect goods you no longer need from your home. We collect beds, furniture, electrical goods and clothes, providing goods are in saleable condition.

Please ask about our house clearance service

FREE, FAST COLLECTION BY OUR FRIENDLY DRIVER

To arrange a personal collection please call **01424 720500/ 722164**
Monday - Saturday 10am to 4pm
Or email queensqroad@aol.co.uk or visit www.harcuk.com for more information on what we do!
HASTINGS ADVICE AND REPRESENTATION CENTRE
REG CHARITY 1083566



CASTLE LAWNS

lawn care & garden work undertaken:
**MOWING, AERATING, SCARIFYING
WEED CONTROL, FERTILISER
TOP DRESSING, SEEDING, TURFING
LOGS SUPPLY**

Free quotation and information

01424 812310 0781 779 5142

www.castlelawn.com

derekstone4@hotmail.com

Flat Roof Problems?



B. WALKER

FLAT ROOFING SPECIALIST

Mastic Asphalt and Felt Roofing

35 years experience

All work guaranteed

Free Estimates at Competitive Prices

01424 812245

07802 885476

Red Briars, Pett Road, Guestling, Hastings, East Sussex, TN35 4EX



PETT LEVEL PRESERVATION TRUST

– Cliff Dean

Work has progressed on the Trust's website, which will probably be online by the time you read this. You'll be able to find information about the Trust's history and purpose as well as illustrated up-to-date news concerning events and wildlife. Lists of the various animal and plant species found on our land will appear as they are compiled and there will be a gallery of old photos.

Several subtle new signs have been installed at the entrances to the Trust land to replace the larger wooden ones, which have now decayed.

Our local contractors have fenced off the compartment around "Tamarisk" in order to facilitate grazing and continued the removal of blackthorn scrub until wet ground conditions called a halt to the work for this winter. Although these areas look bare at the moment, signs of regrowth are already evident and by late spring they will be waist-high in varied vegetation. Although a large area of reed was mown this autumn the plan for future years is to cut smaller blocks in rotation, allowing the development of low scrub, which will favour insects and nesting birds.

Low scrub has, however, been cut back on the old tennis court, opposite "Glenview" to permit the return of shallow-soil plants such as Viper's Bugloss, which thrive there thanks to the hard surface beneath. The volunteers engaged in this work have also been opening up an overgrown pond nearby to further diversify the habitat.

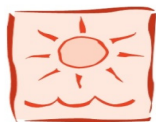
Cutting of vegetation along the Canal itself is the work of the Environment Agency, which undertakes this work every autumn to ensure the free flow of water. Again, this looks very bare now but will grow up quickly. There has also been clearance along the Trust's NW boundary, where some trees were falling across fences of the adjacent grazing land, while accumulated debris was impeding drainage.

As part of Rye Harbour Nature Reserve's winter programme, Martin King & I will lead walk to look at the military archaeology of Toot Rock on **Saturday 21st March** 10-12. Meet at the white "Toot Rock" stone TQ894138.

For your diary: the Trust's Annual Meeting will take place in **Pett Village Hall** on **Friday April 24th**. More details to follow.

The Lookout

FIVE STAR BED & BREAKFAST



THE LOOKOUT



Chick Hill – Pett

Two self contained on-suite rooms
Award winning multi choice breakfast
Free WiFi & Internet
Multi channel TV
Mini Fridge

Ample secure off road parking

Enjoy breakfast on the Patio or Sun lounge taking in the superb sea view

WWW.lookoutbb.co.uk

Please visit our web site for all information & booking enquiries
or telephone any time

01424 812070

KR WINDOWS LTD

Installers of top quality u.p.v.c

*Conservatories ~ Porches ~ Windows
Doors ~ Fascias ~ Soffits ~ Guttering
Replacement Handles ~ Replacement Hinges
Replacement Sealed units*

***All Work Guaranteed ~ Over 20 Years Experience
Fensa Registered Company***

From a replacement handle or double glazed unit to a new conservatory or whole house of windows call **Kevin** for a free Estimate and Advise

01424 754246 ~ 07970 207914

Kevin@beamingmail.com

Local references available



AN INVITATION TO GET FIT!



EXERCISE EVERY THURSDAY MORNING IN PETT VILLAGE HALL

For all ages: just turn up in trainers and loose clothing – lycra optional!

9.15 - 10.15 BODYSCULPT

£3 per session

Intermediate class with music to improve stamina, shape, strength and suppleness in a relaxed and friendly atmosphere



10.30-11.30 BODYSTRETCH

£3 per session

Beginners' class with music to work on toning and flexibility while reducing stiffness, stress and aches and pains: informal, effective and fun

BARGAIN! Both classes for only £5

For further details call or e-mail **Mrs Robin Hutt**
01424813182 or robinhutt@btinternet.com

Private and home training also undertaken



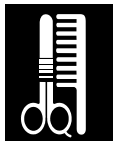
YOLANDA WIGGINS
PHOTOGRAPHY

Tel: 01424 813922
Mob: 07922 089258

Weddings ~ Portraits ~ Equine

Take a look at my website and
Call me!

www.YolandaWiggins.co.uk



Mobile Hair Design by Nicole

Formally at the "Rye Retreat"

9 years Aveda Trained
Fully insured

Latest Cutting and Colouring Techniques

Cut and Blow dry	£20.00
Wet Cut	£15.00
Full Head of foil Highlights	£40.00
Half Head Foil highlights	£25.00
Full head Tint	by Quotation
Men's Cuts	£10.00

APPOINTMENTS 7 DAYS A WEEK -
HOURS TO SUIT YOU

Contact **Nicole** on **07803 846133**

Carpets & Soft Furnishings Expertly Cleaned

A local, quality service is
guaranteed, using the very latest
equipment and cleaning methods,
for the best
possible results

FREE emergency stain removal is
available to all **Pett** residents!

Just phone

(01424) 871444

Mike will be happy to take your call

Conquest

Cleaning Services Limited

Vernon Cottage * Pett Road * TN35 4HD

Members of the National

Carpet Cleaners Association &

ESCC Trading Standards Approved

www.conquestcleaning.co.uk

LUNSFORD FARM LAMB



Available for the freezer
half or whole lambs

Jointed & individually wrapped

Enjoy the superb flavour of the
meat from this
award winning local flock

Winner of the
Romney Sheep Breeder's Society:
"Champion Commercial Flock"
2008 & 2012

To order
01424 813368 – 07776 143509



YEW TREE STONE LTD.

Your Local Family Stonemason

New Memorials
Grave Maintenance
Renovation & Cleaning
Additional Inscriptions

Home Visits Welcomed

Tel: 07511 133272

E-Mail: enquiries@yewtreestone.com

20 Year Fixing Guarantee On All
New Memorials

JUMBLE SALE ON 21ST MARCH

We are all now used to questionnaires and surveys. Perhaps some people actually enjoy filling them in.

So, please answer the following:

YES NO MYOB

1. Have you clothes at home which no diet will ever enable you to wear again?
2. Are there items of china which you never use?
3. Have you lived in the same house for more than 15 years?
4. Are you housing a lot of your children's possessions which they left behind many years ago?
5. Do you like going to events which have free entry?
6. Have you discovered that what you are happy to wear is called RETRO?
7. Are your children/grandchildren/greatgrandchildren happy playing with toys which once belonged to someone else?
8. Do you enjoy a flutter on the raffle?
9. Do you like having tea or coffee in congenial company?
10. Do you feel that your home is a bit bare now you have decluttered?
11. Are you content that the village church should make a profit from the Jumble

If you have answered yes to at least one question the Jumble Sale is for you! You are ideally suited either to contributing items of bric a brac or clothing or coming to it.

SATURDAY 21ST MARCH PETT VILLAGE HALL 1pm to 3pm FREE ENTRY

(Hall open at 10am for contributions)



ON THE BEACH AT PETT LEVEL – Mike Goswell

It's been a busy February at the Club.

We have had live music from Phil Trainor and Ricochet as well as a charity quiz in aid of St. Michael's Hospice and a beauty demonstration evening held by local Beautician Susannah (Beauty by Susannah). We also presented the money raised at our annual Harvest Home in September to Hastings and Rye Harbour RNLI, the record sum of £2203.80 was split equally between both lifeboats.

Live music for March:

- ☐ Sunday 8th **Carter Williams**, a duo from Brighton, join us for the afternoon 3pm
- ☐ Sunday 22nd The **Ballyregan Boys** return in time(ish) for St. Patrick's Day 3pm

Our regular event dates for March:

- ☐ Acoustic Jam Night is Tuesday 10th.
- ☐ Steak Night is Thursday 5th and 19th.
- ☐ Quiz Night every Monday 8:30pm.
- ☐ Free Pool every Wednesday.
- ☐ Bingo Tuesday 3rd and 17th Eyes down 7pm.
- ☐ Fish 'n' Chips deal every Friday, lunch and evening.
- ☐ Vinyl Night Saturday 28th 9pm.

BINGO will now take place on the first and third Tuesday each month. There will be no Bingo on the 24th February as advertised in the previous edition.

The New Beach Club **A.G.M.** will take place on the 12th April. The A.G.M. is open to all currently subscribing members of the Club.

See you all soon!

THE NEW BEACH SEA ANGLING CLUB

- Pete Drew, Competition Secretary

Nothing much to report this month on the angling front.

February and March are renowned for being poor fishing months for the inshore boat angler. Our new season kicks off on Easter Sunday and I'm sure our regular fishing members will be itching to get to sea after our winter break.

Tight lines and as always stay safe.

PETT LEVEL RESCUE BOAT – Steve Hill, Chairman

Well the rains did come last month but because of the combination of favourable winds and low tides we were not called on, although there was some local flooding. We had our fashionably late Christmas meal also in January, this was held at the Robin Hood where 30 members of the association had a very nice evening. Many thanks, to all at the Robin Hood for a wonderful night. It has become a tradition to announce new crew members and to promote existing ones at the Christmas dinner, so it was with much pleasure that we learned that both Andy Cramton and Liam Melville had been promoted to the position of helm. Andy and Liam have been crew for a few years now and after successfully completing the RYC Power Boat Course last October it was thought that they both have the required experience to take this responsible position.

As always if you are interested in what we do please don't hesitate in coming along to the boathouse, we are there every Sunday morning.

TIDE TABLES

MARCH 2015		Rye Harbour Approaches	
Add 1 hour for British Summer Time to shaded areas			
Date	Time	O.D. Metres	O.D. Metres
1 Su	0817	2.1	2.5
2 Mo	0922	2.5	2.7
3 Tu	1007	2.9	3.1
4 We	1043	3.1	3.4
5 Th	1114	3.2	3.5
6 Fr	1143	3.4	—
7 Sa	0000	3.6	1212
8 Su	0025	3.5	1236
9 Mo	0047	3.5	1255
10 Tu	0108	3.5	1319
11 We	0135	3.5	1350
12 Th	0209	3.2	1428
13 Fr	0252	2.9	1517
14 Sa	0349	2.5	1627
15 Su	0535	2.0	1834
16 Mo	0714	2.5	1949
17 Tu	0821	2.7	2048
18 We	0917	3.4	2141
19 Th	1008	3.7	2229
20 Fr	1055	4.0	2315
21 Sa	1139	4.3	—
22 Su	0000	4.4	1220
23 Mo	0041	4.4	1301
24 Tu	0122	4.3	1342
25 We	0204	3.9	1426
26 Th	0248	3.4	1514
27 Fr	0340	2.7	1610
28 Sa	0439	2.2	1714
29 Su	0552	2.0	1835
30 Mo	0741	2.0	2008
31 Tu	0854	2.5	2106

MOON PHASES	
Full Moon - 5th : Last Quarter - 13th	
New Moon - 20th : First Quarter - 27th	
SUNRISE	SUNSET
7th - 0636	14th - 0620
14th - 0620	21st - 0605
7th - 1754	14th - 1806
14th - 1806	21st - 1817
	28th - 1829

The tidal information for Rye Harbour Approaches is reproduced with the permission of the UK Hydrographic Office and the Controller of Her Majesty's Stationery Office. Crown Copyright reserved. Published by

Adams of Rye Limited, 8 High Street, Rye, East Sussex TN31 7JH Tel: 01797 223136 Fax: 01797 223380 Email: AdamsRye@aol.com



JOHN COX

Quality Building Work

*Inside and out
No job too large or too small*

**PLASTERING, ROOFING
CERAMIC & MARBLE TILING
DECKING, PATIOS, ETC.**

Call John on:

01424 439995

07792 964210

FOR A FREE ESTIMATE & ADVICE

**FLEAS, WASPS, BEES,
RATS, MICE,
MOLES, PIGEONS**

ROTHER PEST CONTROL

**R.S.H. CERTIFICATED
&
General Property Maintenance
Fencing – Brickwork
Roofing**

Mr. A.D. Benn

**Tel: 01797 226778
Mobile: 07739 174552**

**Funnell
& Perring
SOLICITORS**

**192-193 Queens Road Hastings
East Sussex TN34 1RG**

**EXPERIENCED ADVICE IN A FRIENDLY
CARING ATMOSPHERE**

We specialise in:

Wills and Trusts	Conveyancing
Probate	Family Matters
Child Care Work	Court Work

**Please contact us on
01424 426287/437081
for more information**

email: law@funnellperring.co.uk



This mark of excellent care

**Do you need help
at home?**

**From 30 minutes a week to
24 hours a day.**

We can help with:

- Personal Care • Shopping
- Housework • Cooking

And much more.

**Bexhill: 01424 819000
www.caremark.co.uk/rother**

1066 Garden Services

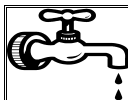
- Lawn mowing
- Hedge cutting
- Tree work
- Landscaping
- Fencing
- Garden clearance
- Over 13 years experience
- Qualified and Insured

Please contact us to arrange a quote:

Office: 01424 212650

Mobile: 07 43210 6220

Web: www.1066grasscutting.co.uk



NEED A PLUMBER?

Ray Barden

Plumbing & Heating
01424 812551

ALL ASPECTS OF PLUMBING & HEATING UNDERTAKEN

40 YEARS EXPERIENCE IN
PETT AND SURROUNDING
VILLAGES

No job too large
or too small



THE BUTCHERS SHOP

PETT ROAD, PETT

(01424) 812148

Personal Friendly Service

Quality Scottish Beef

Prime Pork

English Lamb

Home Cooked Ham

Seasonal Meats

Barbeque Ideas

Delicatessen

Traditional Home made

Sausages & Burgers

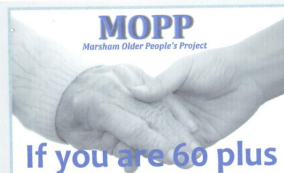
Fresh Bread & Milk

Newspapers from Monday to

Saturday

Also in stock are

Frozen goods, ice creams & comestibles



If you are 60 plus

Do come and join us each Friday between
10am and 2pm at the Village hall in Fairlight
for a social gathering amongst friends.
Enjoy a delicious hot lunch, Quizzes, raffle,
a game of Bingo and various entertainment.

All for just £5.00

Transport available at a minimal cost.



For more information please visit
our website: www.fairlightmopp.co.uk
or call: Jim Saphin on 07905 981036

(A registered Charity)

PARISH DIARY

WEEKLY ACTIVITIES			Where	Whilst every effort is made to ensure this is up to date we are not always told of changes – you should check with event organisers for specific times and dates. If you want your special events or regular meetings included in this diary, please contact us on 813206 or 812323 or pettparishnews@live.co.uk
Mon	6.30pm	Pilates	VH	
Mon	7.30pm	Village Choir	MC	
Mon	9.30am	Flowerpots Playgroup	VH	
Tue	10.30am	POPP	VH	
Tue	7.00pm	Pole Dancing	VH	
Wed	10.00am	Badminton	VH	
Wed	6.00pm	Zumba	VH	
Thu	9.15am	Dance & Exercise Classes	VH	
Fri	10.00	Badminton	VH	
Fri	2.00pm	Latin American & Ballroom Dancing	VH	
MONTHLY & BI-MONTHLY ACTIVITIES			Where	Date this month
Mon	6.30pm	Village Hall Committee	VH	2 nd
Tue	7.30pm	Pett Parish Council	VH	17 th
Wed	11.00am	Rambling Club	NBC	11 th
Tue	7.30pm	Gardening Club	VH	10 th
Wed	10.00am	Village Coffee Morning	VH	4 th
Tue	12:05-12:35	Mobile Library	Pett Village Church ONLY	3 rd , 24 th * see information below
Thu	7.00pm	Flicks	VH	5 th
Fri	7.30pm	Pett Nats	VH	20 th
Fri	2.30pm	Pett Womens Institute	VH	20 th
Sun	3pm	Vibele – laughter class	VH	1 st

VH Village Hall; **NBC** New Beach Club

*** PLEASE NOTE:**

**The date and time of visits by the mobile library have changed, and the schedule listed is the revised timetable from 5th January to 30th June 2015.
It will **ONLY** visit one location, which is opposite Pett Village Church.**

Our mobile library makes its rounds every three weeks. It has books for adults and children, DVDs, audiobooks and reference materials. It also has a wheelchair lift so that everyone can use it. We also deliver some [services for people with disabilities](#).

- For more information about the mobile library, please phone:
- Enquiries: 0345 60 80 196
- Renewals: 0345 60 80 195

New Treasurer Required – The Churchwardens of Pett

Somewhere in Pett or the nearby villages there lives the new Treasurer we seek.

Before those of you who could do with an extra bob or two and can open a computer get too excited I must tell you that this job is unpaid. It is to be Treasurer of the Pett Parochial Church Council for three years starting in April this year.

WHY? Because our existing Treasurer is retiring (after completing his three year appointment) and we need to replace him. He is very happy to assist the new Treasurer to find his way through the accounts to the golden uplands of the year end.

WHY BOTHER EVEN TO THINK OF DOING THIS JOB? Because you will be serving the village (both churchgoers and the many non-churchgoers who rely on the church's being there)

DO YOU HAVE TO LIVE IN THE PARISH OR ATTEND ALL CHURCH SERVICES?
No, you don't. An assistant will bring the collections to you, if necessary.

IS THERE A COMPUTER PROGRAMME DEALING WITH CHURCH ACCOUNTS?
Yes, there is. The accounts are straightforward. The money comes in from Church collections, donations, fund raising, bequests and fees. There is a Gift Aid Officer who manages Gift Aid. The outgoings are for the expenses of looking after the church building and running it and paying our parish contribution to the Diocese.

If you are interested in filling this important post, do please get in touch with our current Treasurer Robert Heather on 07973 202749, who will be able to answer any further questions about the job.

A-STAR COMPUTING

"For all your technical needs"

- * PC, LAPTOP & APPLE MAC Repairs & Servicing *
- * INTERNET, Networking & Wireless Networking Support *
 - * Data, Photo, Email Recovery *
- * Virus, Malware, Spyware and Unwanted Software removal *
 - * Hardware and Software Upgrades & Installations *
- * Help Getting Started, Home Tuition, **Computer Training** *

Home or Business

No Fix, No Fee, No Call out Charges, Very Low Rates

Call us on **01424 201625** or **07976 483839**, All Areas

Email us with any questions: support@a-starcomputing.co.uk

WWW.A-STARCOMPUTING.CO.UK

A-Star Computing®

HOLIDAY COTTAGE

Pett Village

A luxurious 6 bed detached house furnished to a very high standard, 12+ 2 and comes with: Games room/Gym, Wi-Fi and satellite T.V. Delightful garden with decking, lawn and amazing far reaching views; 2 en-suites and a family bathroom with double sized bath. Country walks right on the doorstep, close to the beach and picturesque towns of Rye, Winchelsea and Fairlight



Short & long stays available from £225.00 per night

For more details contact **01424 439352 ~ 07969 800806** or log on to

www.pettnet.co.uk to view more pictures

Jems & Marsh FULL GARDEN SERVICES & HOUSE PLANT CARE

HEDGING
BORDER MAINTENANCE
DESIGN
LAWNCARE

A friendly, professional & reliable service.

We have 40 years of experience between us and we're also BTEC & NCH qualified.

Please call us to arrange a FREE consultation.

REFERENCES AVAILABLE ON REQUEST.



Contact: 07528 030379

Email: mikemarsh112@yahoo.co.uk

'impartial advice & support
in an increasingly gadget laden life'

it & av solutions
neilburgess

For all the advantages that technology offers, setting up and installing a new computer, iPad, iPhone or even a TV can be a time consuming process and sometimes a bit of a headache, even for those with a bit of technical know-how.

So, if you simply don't have the time or inclination to set it all up, we can help.

additional services include -

- **virus removal & data recovery**
- **pc & mac tune-ups**
- **wi-fi & network troubleshooting**
- **multi-room audio**
- **multi-room video**
- **intelligent security solutions**

for a free, no obligation, home or business visit, please call
07970 939 300 or email **neil@itandavsolutions.com**

over 25 years experience, local references available.



Microsoft



Google



SONOS

POSITIVE Homecare

**Exceptional care for you -
in your own home**



Fairlight has a new domiciliary care agency, providing care for you or your loved ones. As a local company, we already have an excellent reputation providing professional care without compromise. We pride ourselves in selecting experienced and dedicated carers with personality and good character. The purpose of our work is to provide care you can trust and rely on, that's well managed and given attention to detail. Prices are competitive, from 30 minute calls to all-day care and respite cover. Personal care, domestic help and shopping are just some of the things we can help you with.

If you feel you need a helping hand, give us a call and we can discuss your needs. There is no obligation.



Support with
Confidence
EAST SUSSEX COUNTY COUNCIL

01424 813700 *We're right nearby*

Visit our website
for more information

www.positivehomecare.co.uk

BUCKSWOOD SCHOOL

YOUR LOCAL INDEPENDENT SECONDARY SCHOOL



BROOMHAM HALL

Bella Gordon
April '02

- Students aged 10-18 years – 200 boarders and 180 local day children
- 72% overall GCSE pass A*-C (85% UK students only) in 2011
- 97% 'A' Level pass in 2011
- Accredited International Baccalaureate
- Placements to top UK Universities including Cambridge, UCL, St Andrews, LSE, Warwick and Loughborough
- Extensive transport routes covering Hastings, Bexhill, Rye and Cranbrook
- Affordable fee. Generous bursaries and scholarships available – academic, music, art, sport, drama and equestrian – up to 50%

Buckswood . . . investing in our local community

Tel: 01424 813813

Email: achieve@buckswood.co.uk

Web: www.buckswood.co.uk

In Praise of 'the Little Gentleman Dressed in Black'
- Mike Russell of the Sussex Wildlife Trust

www.sussexwildlifetrust.org.uk



Talking to my colleague Michael Blencowe recently, he was saying he had been asked to give a talk where the preceding speaker was advising on how to get rid of moles! We both felt that moles get a bad deal, so here we go - a spirited defence of the humble mole.

It is fair to say that the mole is one of the best known of British animals although, it is hardly ever been seen by most people. However, the impact moles have on people, especially those who treasure their gardens or their golfing greens can be quite extreme. Although, most people have never seen a live mole, they are familiar creatures due to featuring in children's illustrations and nursery rhymes, with perhaps the most loved being Mole in Kenneth Grahame's, 'The Wind in the Willows'.

There is a great story as to how the term 'little gentleman in black velvet' came into being. Apparently, in 1702, it was used as a toast by the Jacobites in celebration of the death of King William of Orange who broke his collar-bone when his horse tripped over a mole hill while riding in Hampton Court.

As well as bringing down monarchs, moles definitely raise the temperature of gardeners and green keepers with their propensity to create beautiful piles of lush soil on manicured lawns and greens. Personally, I would love moles to come to my garden and aerate my lawn, such as it is, with what back in the 16th century were sometimes called 'tumps'.

I have only ever seen a live mole on two occasions, one was, rather alarmingly, scuttling down the side of a busy road, whereas the other one was when I watched a moving mound of earth in a field until eventually a little velvet head poked its head out of the top, energetically sniffed the world around it, and then disappeared into the hole again. It was a wonderful moment, to catch sight of such a seldom seen common mammal.

Moles are not totally blind, but have very poor vision, but make up for it with an incredible sense of smell which it uses to hunt its prey. They eat mainly earthworms but will also take millipedes, centipedes and slugs. It is thought they will often cache worms when they have a surfeit of food, usually biting off their heads and storing them until food is scarce, forgetting, that worms can regenerate their missing parts and make their escape!

Their intricate tunnels can reach over a metre depth and their sleeping chambers that are lined with vegetation are dug using their huge shovel-like front paws. They are found across the UK, absent mainly from Central and Northern Scotland and despite centuries of persecution, they remain reasonably common.

So, the mole is a clever, interesting animal that deserves a better reputation than something that ruins your garden and whose only redeeming feature is to be made into a pair of trousers! Let's hear it for the little gentleman dressed in black.

The issue of immigration

Immigration dominated the news recently and as we approach the election it will probably raise its head again. So what do you think? Should we provide more refuge for immigrants, or are they too much of a burden? Are we too overcrowded? Has our compassion run out? Should charity begin at home and stay at home?

The issue of whether immigration is a net gain to the nation, or a net drain is a complex one. We have to look at the financial cost, scarcity of jobs, population density, the sense of personal security and many other issues. But we also need to consider the moral and humanitarian aspects.

Millions of people have fled atrocities in Syria, Iraq and other nations. People from many other countries are fleeing poverty, famine, discrimination and war, they are looking for stability and a better future, but for all sorts of reasons the UK is currently reluctant to receive them. While we aim to reduce the number of immigrants to the UK, the number of refugees around the world is greater than ever, which probably reflects growing worldwide instability. Be grateful therefore that we are living in a country that has not experienced war for 70 years!

The bible teaches that everyone is made in the image of God and should be treated with respect, care and compassion, irrespective of age, gender, nationality, or creed. It also says we should love other people as we love ourselves. Widows, the poor, the disabled and people of other nations should be given the help they need. No one should be exploited for financial gain; or be used, abused or trafficked.

Jesus the ultimate role model put this into practise. He showed compassion to the needy, the sick, the outcast, the poor and the despised and He said, when we care for others in need, it is just as though we cared for Him.

Unless the government succeeds in stifling this topic, I'm sure we will hear a lot more about the topic of immigration as we get closer to the election. But if you haven't made up your mind on this issue can I encourage you to ask yourself this question, is the bible right when it says we should love others as we love ourselves? Also would you agree that all people should be treated with respect, care and compassion regardless of age, gender, nationality, or creed? If so what does this mean for our current immigration policy?

I'm concerned not only for people who want to settle in the UK and other countries, but for the people who already live in the UK. My concern is that despite the Disability and Human Rights Acts and Discrimination Laws, we as a nation are fixing our eyes more and more on personal gain and in the process we are losing our soul.

We are now in one of the busiest seasons in the church's year – Lent and Easter.

Lent will have begun on Ash Wednesday, 18th February. The Benefice is running a Lent Study Course to be held in St. Peter, Fairlight – details below. We will be discussing some of the issues that affect society today – Racism, The Role of Women, Materialism. Everyone is welcome, so please come to whichever session suits you best. Each week will be led by a different member of the Ministry Team.

Lent 1	Wed 25 th Feb	7.30 – 9 pm or	Thurs 26 th Feb	2.30 – 4 pm
Lent 2	Wed 4 th March	7.30 – 9 pm or	Thurs 5 th March	2.30 – 4 pm
Lent 3	Wed 11 th March	7.30 – 9 pm or	Thurs 12 th March	2.30 – 4 pm
Lent 4	Wed 18 th March	7.30 – 9 pm or	Thurs 19 th March	2.30 – 4 pm
Lent 5	Wed 25 th March	7.30 – 9 pm or	Thurs 26 th March	2.30 – 4 pm

THURSDAY 16TH APRIL: VILLAGE HALL CHURCH A.G.M

The agenda includes:

- ✚ Election of Churchwardens and PCC
- ✚ Financial report and future fundraising
- ✚ Report of the church's activities over the past year

EASTER LILIES/ FLOWERS

If you would like to make a donation in memory of a loved one please let Cathy Norris or me know by Sunday, 22nd March. We don't yet know what the lilies will cost, but they are usually between £3 and £5 each. There is a list in the church porch for you to sign if you can't get hold of Cathy or me.

There is nothing from the registers.

OUR NEXT SERVICES

Sunday 1 st March	9.30 am	Holy Communion	Kay Burnett
Sunday 8 th March	9.30 am	Morning Worship	Meriel Deasy
Sunday 15 th March	8.00 am	Holy Communion	Kay Burnett
Sunday 15th March	10.45 am	Mothering Sunday	Methodist Chapel
Sunday 22 nd March	9.30 am	Holy Communion	Kay Burnett
Sunday 29 th March	9.30 am	Palm Sunday Holy Communion	Kay Burnett

A PRAYER FOR PETT

Listen to love in spring

In coming from winter to spring, love suffers. But soon its suffering is turned into blossoms and bursting, grass-green joy, warm air and rainbows. It is young and free and above all alive.

Springtime is Easter when love rises from the earth, never again to be broken or destroyed.

Love in spring is buttoned and belted, ready and waiting to meet life. It is eager to try new things.

If Easter love is hurt, it forgives. If love in spring does any harm, it is quick to set things right again.

Spring love is irresistible and radiant.

Listen to love in spring as it grows.

Sainsbury's Active Kids

Sainsbury's Active Kids tokens are now being issued which are used to obtain PE equipment for the school. We would be grateful if you could collect as many as you can and send them into school. Thank you!

Ed note: Meriel will be happy to receive your vouchers and deliver them to Guestling School.

Easter Services

Palm Sunday: March 29th start of British Summer time, clocks go forward
9.30am Holy Communion at Pett
10.30am All Age service at St Andrews Fairlight

Maundy Thursday: April 2nd 7.30pm Holy Communion at St Peter's Fairlight
led by Kay Burnett

Good Friday: 3rd April 10am Walk of Witness from Pett church to Pett
chapel followed by short service
10.30am Reflective service at St Andrew's Fairlight

Easter Sunday: 5th April 9.30am Holy Communion at Pett
led by Kay Burnett

Messy church

takes place in St Peter's church Fairlight on the first Wednesday in each month from 3.30 - 5pm.

It is for all children up to the age of 11yrs with parents or responsible adult



22 Winchelsea Road
Rye
East Sussex
TN31 7EL
01797458007

www.saul@cpmotorco.co.uk
www.cinqueportsmotorcompany.co.uk
Mobile 07824096482

Opening Hours
Mon-Saturday 9am – 6.30pm
Sunday 10am-3pm
Or simply contact us to arrange an appointment.



We can pick up or deliver your vehicle.



At CinquePorts Motor Company, you will encounter a warm and friendly welcome, where we aim to make the whole car buying process as enjoyable as possible. With vehicles in stock from Jaguar to Ford or Classic to Modern, Cinqueports aim to cater for all your needs with a friendly and professional service. All our cars come with a silver warranty with the option to upgrade. What's more, if you are looking to sell your car or part exchange we are always on the lookout for vehicles in very good condition. Feel free to have a browse around our website or why not pop in and visit us at our Showroom in Rye, and check out the superb selection of pre-owned cars for yourself at 22 Winchelsea Road, Rye.

Carl & Jane

CATS PROTECTION



We have rescued cats and kittens available for rehoming. They are all vaccinated, micro-chipped, vet checked and, if over 5 months old, neutered.

Visit www.Hastings.cats.org.uk to see who is available or give us a call on 01424 754328 or hastingscp@talktalk.net.

For lost & found enquiries call 01424 443133.

BATHROOMS OF PETT

COMPLETE SERVICE,
INSTALLATION AND TILING
DESIGN
SUPPLY AND FIT, OR JUST FIT
GRAND DESIGN LOOK,
WITHOUT GRAND PRICES
MODERN OR PERIOD STYLE
MAXIMISE FLOOR SPACE WITH
A WET ROOM
*QUALITY WORK, FULLY
EXPERIENCED*

Mike Westerbeek
01424 814521 ~ 07708 066990

**ONE OF THE
LARGEST
DISPLAYS OF
WORKING
APPLIANCES IN
THE AREA**

**TRY BEFORE YOU
BUY IN OUR
DEMONSTRATION
AREAS**

**REGULAR
COOKING EVENTS**

**CHECK OUT OUR
WEBSITE FOR
DETAILS**

**FIND US ON
FACEBOOK**

**23 CRANBROOK
ROAD,
HAWKHURST,
KENT TN18 4AZ
TELEPHONE 01580
753470**



**FULL KITCHEN DESIGN &
INSTALLATION SERVICE.
SALES AND SERVICE FOR MOST
MAJOR APPLIANCES.**

AEG
perfekt in form und funktion



Miele
IMMER BESSER



www.martinsofhawkhurst.co.uk

Nature Notes – Alan Kenworthy

Feeding birds at this time of year can make the difference between starvation and survival. Many birds are in their full breeding plumage now and will soon be trying to go beyond survival to fatten themselves in time for the rigours of egg-laying and nestling feeding.



But feeding the birds doesn't just benefit the birds as they can be entertaining to watch and you never know when you will see something unusual. Just recently we have had more than the usual number of species visiting our feeders – something that alone indicates how much they rely on us feeding them. We haven't seen any unusual species but we have noticed behaviour we haven't seen before and each species has its own style of feeding.

The blue-tit will visit several feeders and flit from one to another, feeding for a while at each one, sometimes taking a large seed which it will hold with its foot against a branch while it breaks it into smaller pieces. The coal tit on the other hand, hardly ever stays on the feeder, but takes one seed and flies off to a safer place. Perhaps it's a measure of the cold weather and the low energy reserves that we have recently seen one staying on the feeder while it ate several seeds.

We have also seen long-tailed tits on the feeders. This is unusual because long-tailed tits hardly ever go on the feeders. Long-tailed tits usually fly around in a noisy mob for most of the year and will sweep through the garden mopping up insects before moving on to the next feast. During the breeding season, however, they abandon the mob and pair off ready for nesting and when the chicks have fledged will join up into mobs again. At first we saw one that was on its own, but the other half of the pair joined it a few days later.

Birds are split into two halves when it comes to feeders – maybe three halves if you count the ones that never feed in gardens. There are the species that seem happy on the feeders – blue-tits and great tits, goldfinches, greenfinches and house sparrows, and then there are those that feed on the ground, picking up scraps underneath the feeders, like dunnocks and wood pigeons. There are also others (a fourth half maybe?) that are at home either on the ground or on the feeders, like starlings or chaffinches. There are also a few species that would really like to use the seed feeders but are not agile enough to be able to balance on the small perch. (That doesn't include wood pigeons that are just too darned big!)

We have robins visiting the garden but in the past they have been amongst those that can't perch but just try to hover long enough to grab a seed or two in passing. We have one robin however, that seems to have taught himself (or herself) to perch comfortably like other birds and to eat his fill. We don't know if it's just one individual that does this or if there are a few. There are two robins that claim our garden as their territory, so if they have both learned the trick it will be interesting to see whether they pass the skill onto their chicks. We just need some warmer weather now so they can get on with it.

For more pictures of birds on feeders, see the online version of this column at www.pettnats2.blogspot.co.uk.

POPP ~ PETT OLDER PEOPLES PROJECT

Funded by the National Lottery through the Big Lottery Fund



LOTTERY FUNDED

Meeting every Tuesday at 10.30 in Pett Village Hall

Committee Members: **Sheila** Thomas– 01797 225616 Mob: 07774 573086
Ann Nicholls– 813043

POPP FUTURE CALENDAR

Tuesday 3 rd March	Sounds of the 40's & 50's.
Tuesday 10 th March	Keith Osborne Music for health
Tuesday 17 th March	The Flapstix – short drama performance
	Spot the tune quiz.
Tuesday 24 th March	Thai Chi Annie Crier /games/cards
Tuesday 31 st March	Sharon Sellens – Singer

Nail Technician – Sheryl Tucker 10th March

Head & Shoulder Massage Antonello Bruce - 3rd and 17th March

Eye Concern – 3rd March – Servicing and cleaning glasses

24th March - Optician visit for eye tests

Open to anyone from the local area who wishes this service.

Toe nail cutting service for any person in the area having difficulty in reaching their feet. Home visiting service. If interested please contact Sheila Thomas on 01797 225616 – also at Popp's weekly – donation to centre.

Hearing Aid Servicing –. Help is available at Popp centre weekly for anyone in difficulties with their hearing aids.



PETT WI – Heather Godwin

When people say “I’d like a nice cup of tea?” they must be thinking of our lovely local tea-expert Peter Wiggins, of the Proper Tea Company, who, at February’s meeting, gave WI members an insight in the world of tea-tasting and tea-pots, and even introduced us to the various types of Pett Village Tea! Peter can be found at various farmers’ markets throughout Sussex, so if you fancy a “cuppa” find him at one of those or contact him at Lincolns, Pett Road.

Two members of Pett WI have been lucky enough to get delegate places to the WI Centenary AGM at the Royal Albert Hall in June. Pett WI itself will be celebrating it’s own Centenary in 2017 with a special programme of events throughout the year. One of the first projects planned is an Oral History of Pett WI. Two members, Chris Taylor and Keren Edwards, have volunteered to co-ordinate this and are interested in hearing from ANYONE - male or female - who, through their family or friends, has had a connection with the WI in Pett. So, if you, your mum, grandma or sister, aunt or cousin were members and you can help to build up a picture of what WI life was like

during the past 100 years, do please help. In the first instance please contact Mary Saint, Secretary, on 01424 813047.

Plans are in place for the very popular annual Big Village Lunch on Sunday June 7th - held for the fourth time this year, so put this event in your diaries NOW! More details will be available in the coming editions of Pett Parish News.

Next month, on Friday March 20th, the members will be receiving Defibrillator training from Rother Responders – an appropriate training session bearing in mind that Pett Village Hall now has its own Defibrillator – who knows when any user of the Hall might need to know how to use it.

Do come along to Pett Village Hall at 2.30pm – a warm welcome awaits!

FLICKS IN THE VILLAGE - Chris Saint and the Flicks Team

On March 5 Flicks in the Village will be showing **Mr Turner**, which stars Timothy Spall in a career defining role, and is directed by Mike Leigh. The film explores the last quarter century of the great if eccentric British painter J.M.W. Turner (1775-1851).

Profoundly affected by the death of his father, loved by a housekeeper he takes for granted and occasionally exploits sexually, he forms a close relationship with a seaside landlady with whom he eventually lives incognito in Chelsea, where he dies.

Throughout this, he travels, paints, stays with the country aristocracy, visits brothels, is a popular if anarchic member of the Royal Academy of Arts, has himself strapped to the mast of a ship so that he can paint a snowstorm, and is both celebrated and reviled by the public and by royalty.

We would also like to alert you to the fact that not only will our April film be The Hundred Foot Journey but also that it will be shown on **Friday 17 April**. This is because the St Michael's Hospice Art Show takes place in the Village Hall over the Easter weekend, which includes Thursday 2 April. So make a note of the date change now and more details will follow in next month's magazine.

Please do not forget, all are welcome to join the Society and enjoy an evening watching a film for as little as £4.00 per show with like-minded people in the local environment of Pett Village Hall. If you wish to know more about the Society, please email me on chris@saintfamily.net or telephone on 813047. Alternatively, you can view all programme details on www.pettnet.co.uk. All films start at 7.30pm with refreshments served from 7.00pm.



Bed and Breakfast ~ Stream House

AA 5 Star Highly Commended

3 Luxurious en-suite rooms with deep baths and power showers

Cosy guests lounge with inglenook fireplace

Delicious breakfasts served in the dining room overlooking the stream

Beautiful 3 acre garden where you can relax by the Koi pond

Please visit our website <http://www.stream-house.co.uk>

Email: info@stream-house.co.uk

Phone: **01424 814916** ~ Mob: **0794 1911378**

See us on PettNet.co.uk

COUNTRY



CARERS

Country Carers Ltd

Offices 1&2 Jempsons Trading Estate, 65-81 Winchelsea Road, Rye, East Sussex TN31 7EZ

Community Carers

We provide Personal & Domestic Care within your own home

Tel : 01797 223329 Mob : 07960 063658 (24hr)

Your
Key
Concierge

YourKeyConcierge.co.uk

**ARE YOU WORRIED
ABOUT YOUR EMPTY
HOUSE?**



DO YOU HAVE A SECOND HOME? ARE YOU LEADING A BUSY LIFE?

RELAX with our **SECURE KEYHOLDING SERVICE** we can provide:

- Home checks,
- Emergency cover
- Second Home Management

For further details: www.yourkeyconcierge.co.uk, E.mail info@yourkeyconcierge.co.uk,
or telephone DAVID DUNLOP on 01424 813018/07912 686429

MICHAEL PENFOLD

GENERAL BUILDING
PLASTERING
MAINTENANCE
PAINTING
*References available
Reliable and Trustworthy*

36 New Winchelsea Rd, Rye, East Sussex 01797 225906 ~ 07974 306258

Beauty by Susannah

Over ten years experience providing a professional service and high standard of beauty treatments in the comfort of your own home.

We provide a whole range of quality beauty treatments, here are just a few...

Sothys Skincare Treatments

Energising Facial
Hydradvance Facial
Collagen Hylaronique
Resurfacing Peeling Care Facial
Limited Edition Seasonal Facial
Multiaction Eye Contour

Beauty Treatments

O.P.I Gel Manicures from £27
& Gel Pedicures from £35
O.P.I Gel Nail extensions from £37
Waxing from £6
Eye Treatments from £9
Massage from £20

Please enquire for further information and full treatment price list.

STEP INTO SPRING

with the new limited edition
Sothys Seasonal facial treatment
- Pineapple and Guva.

Seasonal package - Purchase the three limited edition home care products and receive a seasonal facial treatment completely free! Products- 2-in-1 Mask - easy to use 2-in-1 product exfoliator and mask Serum - an essential dose of vitamins and boost of oxygen to prepare the skin for the summer.

Complexion beautifier - introducing the new fantastic tinted emulsion with a melt in texture to brighten and illuminate the complexion.



 **SOTHYS**
PARIS

O·P·I



**FREE TELEPHONE
CONSULTATIONS**

**GIFT VOUCHERS
ALSO AVAILABLE**

Telephone:
07956 037 887

Email:
info@beautybysusannah.co.uk

Beauty by Susannah



PETT VILLAGE HALL

PETT VILLAGE HALL NOTICEBOARD

"Oh! what a beautiful evening" - to paraphrase the words of a famous song.

Farmers, cowboys and their gals packed into the transformed Village Hall last month for a sing-along to the Oscar-winning film "Oklahoma", and enjoy an appropriate pork and bean casserole followed by delicious chocolate brownies. The hall was decorated with 'corn as high as an elephant's eye' (in the shape of hay bales), a sun was shining in the 'medder' (meadow) and there were imaginary surreys with real fringing on top! There were prizes for the best turned-out costumed guy or gal and a well-supported raffle.

This was just one of the many fund-raising evenings, arranged by the Pett Village Hall Management Committee. Keep an eye out for others including the annual Spring Village Hall Quiz Night on March 28th, the Autumn equivalent on October 24th and a Car Treasure Hunt on September 13th.

The regular users of the Hall now number over 20 local groups. These, plus one-off birthday parties, christening parties, wedding and Diwali celebrations, with hirers coming from Hastings, Bexhill and beyond, ensure that the Hall is being used almost every day of the year – there was even a booking last Christmas Day! Year on year the Hall is seeing a welcome increase in the lettings income but the running costs of heating, cleaning and maintaining the building should not be under-estimated. Replacing the flooring last year made a big hole in the reserves and the Committee is now working hard to build these up again in case of any major expenditure in the future.

Someone who truly valued the Village Hall, and gave a huge amount of support to the new building, was Arthur Hollman - the eminent cardiologist, medical historian and plantsman, who sadly died last year at the age of 90. He, and his late wife Catharine, worked tirelessly to raise funds for the project. The small meeting room is named in her memory. Arthur's final contribution was a generous bequest to the Hall, and the grateful Management Committee will spend some time considering how best to use this gift for the benefit of the facility.



PETT VILLAGE HALL

Pett Village Hall 500 club

Congratulations to this month's winners

1st Prize No 256 Colin and Laurain Chapman £97.80

2nd Prize No 153 Mary Windsor £65.20.

Thank you for supporting Pett Village Hall.

Philippa Strickland, PVHMC



Pett Village Hall Committee

Charity number - 1005693

Are holding their very popular

QUIZ NIGHT

Pett Village Hall Saturday 28th March 2015

7pm for 7.30pm start - £3 per person

To book a table please telephone

Jeanette or Ray Barden on 814717 Phil the Butcher



st michael's hospice

Easter Art Exhibition at Pett

A big Easter Art Exhibition at Pett Village Hall will see more than 30 artists displaying and selling their work to raise funds for the Hospice.

From: 03 April 2015 at 10:00 AM **Till:** 06 April 2015 at 5:00 PM

The event runs from Good Friday (3rd April) to Easter Monday (6th April) from 10am – 5pm and admission is free. There will be free tea, coffee and cake to be enjoyed in the beautiful rural surroundings, and plenty of free parking.

For a donation to the Hospice, on the spot portraits will be painted by award winning artist Barbara Valentine, along with an excellent raffle

Don't miss the opportunity to see paintings by over 30 very talented, local artists on display, a tremendous variety of work and a high standard throughout.

If you would like to volunteer at the Art Exhibition or would like further information contact Amanda on 01424 456371 or email fundraising@stmichaelsospice.com

Travis Electrical

Domestic electrician part P compliant covering all aspects of electrical work

Rewires
New installations
Extensions
Additional sockets or lighting points
Consumer unit upgrades
Periodic inspection
Fault finding
Free quotes

17th edition qualified Luke Travis
01424 773006 / 07821325797
travis.electrical@hotmail.com
www.traviselectrical.co.uk



Capability Chris
Garden Design & Restoration

Chris O'Donoghue
Chelsea Medal Winner
Garden Design

Beautiful hand-coloured drawings
Comprehensive planting plans
Concise care instructions
Regular aftercare and maintenance

For free consultation please contact
Chris O'Donoghue

07887 554412 – www.chrisodonoghue.co.uk



farnsy@hotmail.co.uk
07967 794749
01424 815241

P.J. Turner

ALL ASPECTS OF
TREE WORK
CONTRACTOR

MOWING – LOGGING
FENCING
FREE TELEPHONE ESTIMATES

01424 812604

Countryside Tree care

- All aspects of tree work
- stump removal
- hedge and grass cutting
- Garden Clearance and fencing
- logs available
- NPTC qualified, experienced, fully insured
- Emergency 24 hour call out



Call Luke 01424 424322 / 07981341847

Email countrysidecare@yahoo.co.uk

Recommended by local residents

Do you have a holiday house,
cottage or apartment
that you would like to let?
If so, please get in touch.



bramleyandteal.co.uk
01580 860840





GEM

Property Maintenance Limited

- Scaffolding / Guttering
- Roofing Repairs/ Renewals
- Fire / Floods / Storm damage
- Refurbishments Domestic / Commerical

PAUL LANE

01424 439352

07969 800806

CONTRACTS MANAGER: paul_anthony_lane@hotmail.com

WWW.GEMPROPERTYMAINTENANCE.COM

Hastings

SCAFFOLDING

01424 439352



PAUL LANE

07969 800806

ANDY TYAS

07549 104371

enquiries@hastingscaffolding.co.uk

WWW.HASTINGSSCAFFOLDING.CO.UK

"Hastings Scaffolding is proud to be working with the Hastings Pier Trust restoring the Pier to it's former Glory"

A warm welcome aboard **THE SHIP**: cruising all the way into Spring!



WINCHELSEA BEACH

THE SHIP

QUIZ NIGHT

EVERY THURSDAY, 8PM

Join our Quiz Master for a night of fun and prizes.

AMERICAN NIGHT

FRIDAY 13TH MARCH

Menu available online.
Bookings now being taken.



FISH & CHIPS WEDNESDAY

Come along to our popular
Fish & Chips Wednesday!

FISH & CHIPS £7

Includes bread and butter
and a cup tea/coffee.

☆ Lunchtime Only ☆

MOTHER'S DAY

SUNDAY 15TH MARCH

Celebrate Mother's Day with our
special Mother's Day menu. See our
menu online. Book now to
avoid disappointment.

Find us on **facebook**

Sea Road
Winchelsea Beach
TN36 4LH

shipshiphooray
f shipwinchelseabeach
www.shipwinchelseabeach.com

01797 226767



**Regularly Changing
Guest Ales**

**Weekly and Monthly
Events**

**Regular Live
Music**

Sunday Roast



Bar & Kitchen on the Beach

Home of the New Beach Sea Angling Club

Pett Level, Hastings, TN35 4EH

info@thenewbeachclub.co.uk

01424 812080

www.thenewbeachclub.co.uk

Free Wi-Fi

Membership

Annual: £15 pp

Temporary (one week): £2 pp

[Facebook.com/newbeachclub](https://www.facebook.com/newbeachclub)



GARDEN GEMS

at WAKEHAMS FARM

Pett Level Road

Fairlight, TN35 4ED

Annuals, Perennials, Cottage Garden Plants
Summer & Winter Bedding, Herbs & Vegetable Plants
Hanging Baskets & Tubs, Shrubs, Climbers
Trees, Fruit Trees, Fruit Bushes & Canes, Bulbs

★ DAVID AUSTIN ROSES ★

Climbing Roses, Celebration Roses, Tea Roses
Floribunda Roses, Shrub Roses, Patio Roses

★ New For 2015 STANDARD ROSES ★

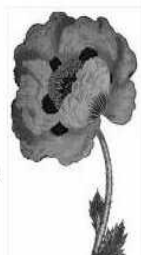
@ Wakehams Farm Shop

Open 7 Days
a Week

If have not got it in stock we
will try and source it for you

Fresh Farm Produce, Local Home Made Cakes

Jams, Compost, Pots & Garden Ornaments & Much More





344 HASTINGS – RYE	Mondays – Fridays (excluding Bank Holidays)																
	<i>S</i>	<i>(S/H school/holiday days only)</i>															
Hastings Rail Station		0745 0845 0945 1045 1145 1245 1345 1445 1550 1650 1755 1900															
Hastings Breeds Place		0748 0848 0948 1048 1148 1248 1348 1448 1553 1653 1758 1903															
Ore Co-Op	0718	0800 0900 1000 1100 1200 1300 1400 1500 1605 1705 1810 1910															
Fairlight Glen	0721	0803 0903 1003 1103 1203 1303 1403 1503 1608 1708 1813 1913															
Fairlight Cove Hotel	0727	0809 0909 1009 1109 1209 1309 1409 1509 1614 1714 1819 1919															
Pett Level	0733	0815 0915 1015 1115 1215 1315 1415 1515 1620 1720 1825 1925															
Winchelsea, Smugglers	0737	0819 0919 1019 1119 1219 1319 1419 1519 1624 1724 1829 1929															
Winchelsea Beach	0739	0821 0921 1021 1121 1221 1321 1421 1521 1626 1726 1831 1931															
Winchelsea, Bridge End	0742	0824 0924 1024 1124 1224 1324 1424 1524 1629 1729 1834 1934															
Rye Rail Station	0748	0830 0930 1030 1130 1230 1330 1430 1530 1635 1735 1840 1940															

Sundays & Bank Holidays; 4 departures from Hastings Rail Station every other hour from 1105 to 1725

344 RYE – HASTINGS	Mondays – Fridays (excluding Bank Holidays)																
	<i>S H (S/H school/holiday days only)</i>																
Rye Rail Station	0703	0753	0813	0843	0928	1028	1128	1228	1328	1428	1533	1633	1733	1825			
Winchelsea, Bridge End	0709	0759	0819	0849	0934	1034	1134	1234	1334	1434	1539	1639	1739	1831			
Winchelsea Beach	0712	0802	0822	0852	0937	1037	1137	1237	1337	1437	1542	1642	1742	1833			
Winchelsea, Smugglers	0714	0804	0824	0854	0939	1039	1139	1239	1339	1439	1544	1644	1744	1835			
Pett Level	0718	0808	0828	0858	0943	1043	1143	1243	1343	1443	1548	1648	1748	1839			
Fairlight Cove Hotel	0724	0814	0834	0904	0949	1049	1149	1249	1349	1449	1554	1654	1754	1844			
Fairlight Glen	0730	0820	0840	0910	0955	1055	1155	1255	1355	1455	1600	1700	1800	1850			
Ore Co-Op	0733	0838	0843	0913	0958	1058	1158	1258	1358	1458	1603	1703	1803	1853			
Hastings Harold Place	0741	0850	0851	0923	1007	1107	1207	1307	1407	1507	1612	1712	1812	1900			
Hastings Rail Station	0743	0852	0853	0925	1009	1109	1209	1309	1409	1509	1614	1714	1814	1902			

Sundays & Bank Holidays; 4 departures from Rye Rail Station every other hour from 1018 to 1638

347 HASTINGS - PETT	Monday – Friday (excluding Bank Holidays)										Saturdays	
		<i>H</i>	<i>S</i>	<i>(S/H school/holiday days only)</i>								
Hastings Rail Station	0930 1030 1210 1310 1410 1510 1510 1735										1213 1735	
Hastings Queens Road	0935 1035 1215 1315 1415 1515 1515 1740										1218 1740	
Milward Road				1520 1520 1745							1745	
West Hill Whitefriars	0940 1040 1220 1320 1420										1223	
Ore Post Office	0945 1045 1225 1325 1425 1525 1525 1750										1228 1750	
Ore The King's Head	0947 1047 1227 1327 1427 1527 1527 1752										1230 1752	
Guestling White Hart	0951 1051 1231 1331 1431 1531 1531 1756										1234 1756	
Guestling School				1534								
Pett Church	0956 1056 1236 1336 1436 1536 1542 1801										1239 1801	
Pett Chick Hill	0959 1059 1239 1339 1439 1539 1545 1804										1242 1804	
347 PETT – HASTINGS	Monday – Friday (excluding Bank Holidays)										Saturdays	
	<i>S</i>	<i>H</i>	<i>(S/H school/holiday days only)</i>							<i>H</i>	<i>S</i>	
Pett Chick Hill	0819 0826 1002 1102 1242 1342 1442 1542 1547											0826 1245
Pett Church	0822 0829 1005 1105 1245 1345 1445 1545 1550											0829 1248
Guestling School	0829											
Guestling White Hart	0834 0834 1010 1110 1250 1350 1450 1550 1555											0834 1253
Ore The King's Head	0838 0838 1014 1114 1254 1354 1454 1554 1559											0838 1257
Ore Post Office	0840 0840 1016 1116 1256 1356 1456 1556											0840 1259
West Hill Whitefriars				1021 1121 1301 1401 1501								1304
Milward Rd Manor Rd	0845 0845											0845
Hastings Harold Place	0849 0849 1025 1125 1305 1405 1505											0849 1308
Hastings Rail Station	0851 0851 1027 1127 1307 1407 1507											0851 1310
Fairlight Glen												1603
Fairlight Cove Hotel												1609
Pett Level												1615

PETT PARISH COUNCIL 2014 - 2015

Councillors	Address	Contact
Andrew Dunlop (Chair)	1 Lunsford Farm Cottage, Pett, TN35 4JG	01424 813368
David Richards	Ambleside, Pett Road, Pett, TN35 4HE	01424 815224 richards.davidj@yahoo.co.uk
Martin King	1 New Coastguard Cottages, Toot Rock, Pett Level, TN35 4EW	01424 814078 martin@tootrock.demon.co.uk
Paul Stapley	Bower Cottage, Pett Road, Pett, TN35 4HG	01424 814202 pandpstapley@yahoo.co.uk
Dr Jillian Green	'October', Pett Road, Pett, TN35 4HG	01424 813841
Judith Dean	Delvings, Chick Hill, Pett, TN35 4EQ	01424 812249 jmd_delvings@live.com
Stuart Ware (Vice Chair)	Hunters Meadow, Pett Road, TN35 4HG	01424 813332 studio2@bwparchitects.com
Clerk		
Sarah Willoughby	Wildflowers, Pett Road, Pett, TN35 4EY	01424 813785 clerkpettparishcouncil@hotmail.co.uk

Councillor Responsibilities

Pett Village Hall	Stuart Ware
Pett Sports Association	Martin King & Paul Stapley
Police Community Consultative Group	Judith Dean
Rother Association of Local Councils	Judith Dean & David Richards
Sussex Association of Local Councils	Judith Dean, Martin King
Flood Wardens	Steve Harris
Pett Older Peoples Project	David Richards

ROTHER DISTRICT COUNCIL (MARSHAM WARD)

Roger Bird	87 Battery Hill, Fairlight, Hastings, TN35 4AL	01424 813636 cldr.roger.bird@rother.gov.uk
Robin Patten	5 Old Coastguard Cottages, Pett Level Road, Pett Level, TN35 4EH	01424 812479 cldr.robin.patten@rother.gov.uk

EAST SUSSEX COUNTY COUNCIL

Carl Maynard	The Burrow, 23 Baldslow Down, Westfield TN37 7NJ	01273 481576 cldr.carl.maynard@eastsussex.gov.uk
--------------	---	---

MEMBER OF PARLIAMENT FOR HASTINGS & RYE

Amber Rudd	House of Commons, London, SW1A 0AA	01424 205 435 020 7219 7229 amber.rudd.mp@parliament.uk
------------	---------------------------------------	---

POLICE & CRIME COMMISSIONER FOR SUSSEX

Katy Bourne	Sackville House, Brooks Close Lewes, East Sussex, BN7 2F	01273 481561 spcc@sussex-pcc.gov.uk
-------------	---	--

CONTACT DETAILS FOR VARIOUS VILLAGE ACTIVITIES

Societies, associations & other activities			
Allotments	Paul Stapley	814202	pandpstapley@yahoo.co.uk
Badminton Club	Dave Clarke	812898	gypsydave@uwclub.net
Bowls Club	Barry Quaife	729693	barry.quaife252@btinternet.com
British Legion	Brian Green	812450	toffee35@gotadsl.co.uk
Cricket Club	Andrew Dunlop	813368	
Dance & Exercise Class	Robin Hutt	813182	robinhutt@btinternet.com
Flicks Film Society	Chris Saint	813047	chris@saintfamily.net
Flower Show Chair	Philippa Strickland	814384	pstrickl@icloud.com
Flowerpots Toddler Group	Kate Woodbridge		pettflowerpots@hotmail.co.uk
Friends of Pett Level	Rosemary Moon	812246	jrmoon@pett.eclipse.co.uk
Preservation Trust			
Gardening Club	Bob Harris	815151	bob.june@btopenworld.com
Latin American & Ballroom			
Dancing	Mr & Mrs Hall	813355	
Naturalist Society	John Taylor	814674	jnct@talktalk.net
Pilates	Annie Cuthbert	01797 225186	tb.cuthbert@btinternet.com
Pett Older Peoples Project	Sheila Thomas	01797 225616	sheilaspan@btinternet.com
Pole Dancing	Jane Baldwin	0740 325 6148	jane@mrzen.co.uk
Pett Village Hall			
Management Committee	Ray Barden	814717	ray.barden@btopenworld.com
Short Mat Bowls	Barry Quaife	729693	barry.quaife252@btinternet.com
Stir Crazy Stitches Club	Wendy Burgess	868195	
Stoolball	Janet Fuller	01303 873227	
Tennis Club	Stuart Ware	813332	studio2@bwparchitects.com
Vibele	Natasha Saltzer	07990 697964	ncsaltzer@yahoo.com
Zumba	Sharon Clark	07972 120517	mooprincess@live.co.uk
Women's Institute	Mary Saint	813047	mary@saintfamily.net

Church Team	www.fairlightandpett.com		
Rector	Richard Barron	812799	rector@fairlightandpett.com
Retired Clergy	Rev Kay Burnett		
	Rev Frank Rowson		
	Rev David Wotton		
Readers	Meriel Deasy		
	Ken Holmes		

The Butchers Shop	812148
--------------------------	--------

POLICE COMMUNITY SUPPORT OFFICERS	
Sharon.Eldridge@sussex.pnn.police.uk	Mobile 07810636992
daniel.bevan@sussex.pnn.police.uk	Mobile 07796195639
andrew.smith@sussex.pnn.police.uk	Mobile 07990704108
<i>(if you leave a message you will be contacted on their return)</i>	
Please note that if you witness a crime in progress, you should immediately ring 999	

If you want to be included in this section then please let us know together with contact name, telephone number and email address
pettparishnews@live.co.uk



The Two Sawyers

Pub, Restaurant and Accommodation

“ Good food, good service, great atmosphere ”

Free House • Fresh Local Fish • Seasonal Menu • Harveys Sussex Best Bitter
Guest Ales • British Game • Free Wi-Fi • Bed and Breakfast • Log Fires

Petts Road, Pett Village, Hastings, East Sussex, TN35 4HB
01424 812 255 • twosawyers.co.uk



[facebook.com/
TwoSawyers](https://facebook.com/TwoSawyers)